

Extend your Lifestyle®
Discus® Awning

create the outdoor room

The Discus is a stylish, full cassette folding arm awning. The awning uses high-grade materials of uncompromising quality designed for more demanding residential and commercial applications. The streamline system enables a compact installation whilst providing optimal protection for the fabric and operating mechanism against dirt, rain and humidity.

The compact design makes the Discus ideal for top fix, face fix or recessed mounting installations up to 14m width and 4m projection. Aluxor can also design and supply customised mounting brackets to suit a range of installation requirements. The tilting arm bracket mechanism is incorporated into the extruded aluminum frame, designed for extra strength and stability and can be set at any angle up to 35°.

The Discus awning is available in a selection of over 140 Powdercoat finishes and a large range of plain, textured and vibrant stripe fabrics. The unit is fully motorised with optional hand held remote control, sun and wind sensors.

Aluxor Awnings is a leading manufacturer of German precision-engineered awnings, operating in Australia for over 40 years. Aluxor awnings are built to last.





All operating components are designed and manufactured in Germany and certified by international testing agency TÜV to the European standard 'CE Marking'.

The Secuflex 70II folding arms use tensioned, spring loaded, PVC coated triple steel cables that provide added protection against corrosion. These cables are individually hung to provide excellent wind stability and fabric tension.

The Secuflex 70II arms are able to withstand 120,000 cycles of stress, as certified by Materials Testing Authority of Germany.

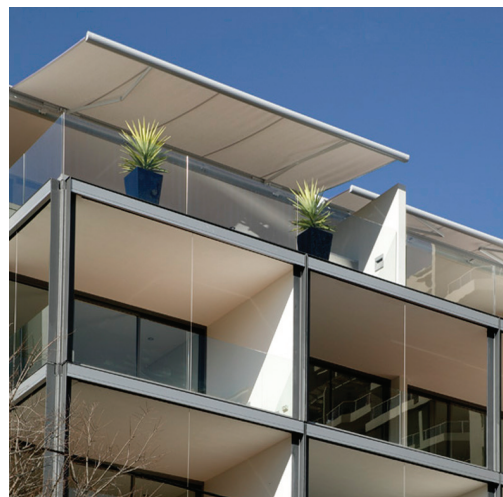
Patented pivot ball front bar connector provides the best possible operational safety.

Extruded aluminium profiles provide solid, stable and long lasting quality that will not rust or vibrate in harsh conditions.

Construction hardware is made of marine grade 316 stainless steel.

The fully enclosed cassette provides optimal protection for the fabric and operating mechanism when retracted.

Patented aluminium brackets and components with pretreated powdercoat finish.

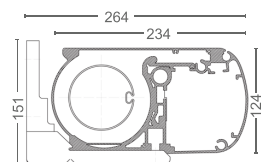


Specifications

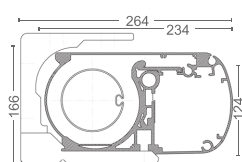
<i>Dimensions mm (h x d)</i>	✓ 124 x 234
<i>Width single unit / coupled</i>	✓ 2m – 7m / 14m
<i>Projection range</i>	✓ 1.5m - 4m
<i>Pitch range</i>	✓ Up to 35°
<i>Extruded aluminum cassette</i>	✓ 140 colours
<i>Fabric</i>	✓ Acrylic canvas
<i>Fabric (size restrictions)</i>	A PVC plastisol coated
<i>Operating mechanism</i>	✓ Hardwired motor
<i>Automation features</i>	A Remote operated motor
<i>Automation sensor</i>	A Motion, sun and wind

✓: Standard A: Available

* Designs and specifications may change without notice.



Wall Installation



Ceiling Installation

Standard Powdercoat Colours

	White Satin		Woodland Grey Satin
	Silver Matt		Monument Satin
	Cream Satin		Black Satin
	Riversand Matt		Sable Bass



Aluxor Awning Systems
Aluxor Industries Pty Ltd
www.aluxor.com.au

ALUXOR |||||
AWNING SYSTEMS