



ABETONE

TECHNICAL ASPECT

Construction: Wilton Cut Pile

Composition: 100% Wool

Secondary Backing: Natural/Synthetic Jute

Stitches per m²: 93000m²

Pile Height: 7.0mm

Total Height: 9.0mm

Pile Weight: 1.322g/m²

Total Weight: 2.308g/m²

Roll Width: 400cm

Use: High Residential/ Medium Commercial



Level 1, 68 Sophia Street
Surry Hills, NSW 2010

1800 239 237 (1800 2FYBER)
info@fyber.com.au
@fyber_flooring

www.fyber.com.au

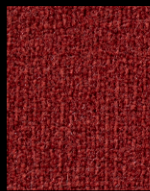
FYBER



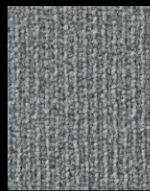
4264 ANTILOPE



6038 ANTRACITE



1126 ARANCIO



4962 ARGENTO



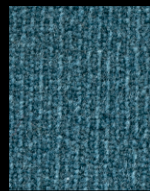
4215 AVORIO



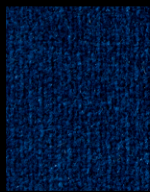
4129 BEIGE



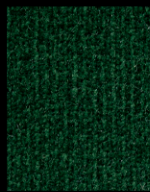
2047 BLEU



2040 BLU



2069 BLU



3828 BRUGHIERA



4263 CAMASCIO



1917 CARAMEL



4484 CREMA



4984 DAINO



4971 ESPRESSO



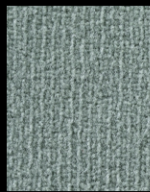
2602 FIORDALISO



2069 BLU



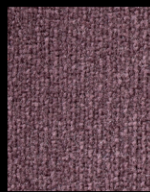
5258 FUMO



3137 GIADA



5340 GRIGIO CHIARO



1563 LILLA



4976 LINEN



4063 MARRONE



0736 MIELE



6035 NERO



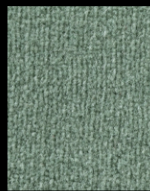
4974 NOCCIOLA



4024 NOCE



4977 OATMEAL



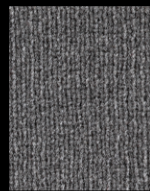
3725 OLIVO



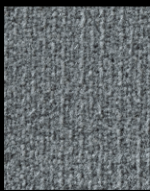
0030 ORO



7144 PANNA



5051 PIOMBO



5260 PLUMBEO



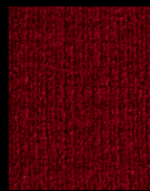
4838 POLVERE



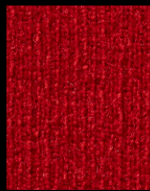
4064 ROSA



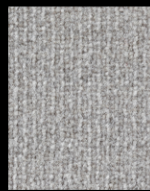
1797 ROSATO



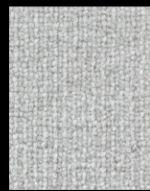
1092 ROSSO



1568 ROSSO



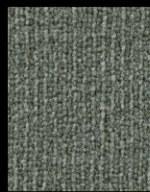
4818 SELCE



5630 SILVER



7167 SNOW



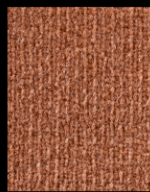
3833 STEPPA



4982 STONE



4978 STRAW



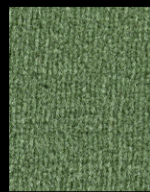
1118 TERRACOTTA



4972 TORTORA



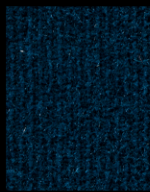
4600 VANIGLIA



3738 VERDE



3111 VERDI



2515 ZAFFIRO

Level 1, 68 Sophia Street
Surry Hills, NSW 2010

1800 239 237 (1800 2FYBER)
info@fyber.com.au
@fyber_flooring

www.fyber.com.au

FYBER