

**Serge Ferrari**

Soltis  
**Horizon 86**

Transparency  
and natural light

.....  
**new** Colours  
Collection  
.....

## Applications

Facade blinds, veranda and glass roof blinds, drop-arm awning, pergolas and canopies, roll-up valances and shade sails



## ■ Excellent transparency

Soltis Horizon 86 provides excellent outward visual contact to enjoy the view even when the awning is lowered. It proves its efficiency by blocking up to 93% of the heat in outdoor use.

## ■ Optimised natural light contribution

Soltis Horizon 86 promotes natural light intake. This is beneficial in terms of:

- energy savings by reducing the use of artificial lighting.
- the well-being, health and productivity of people in a professional or private environment.

## ■ Harmonised ranges

All the colours of Soltis Horizon 86 are coordinated with Soltis Perform 92 to:

- harmonises all the facades of a building.
- meets visual comfort needs according to each facade's orientation.
- adjusts thermal protection to save energy.

BLOCKS UP TO  
**93%**  
OF THE HEAT

ALLOWS NATURAL  
LIGHT TRANSMISSION  
OF UP TO  
**28%**

## Soltis Horizon 86 - 3 key properties



**Dimensional stability**  
thanks to Preconstraint technology

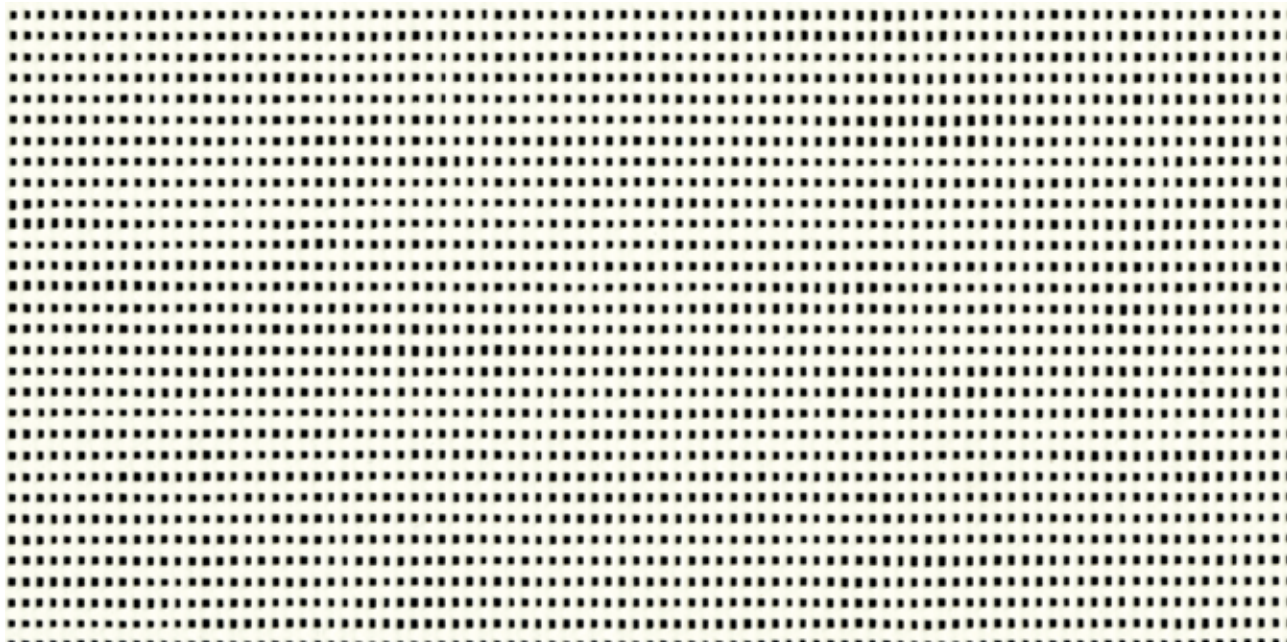


**Easy to clean**



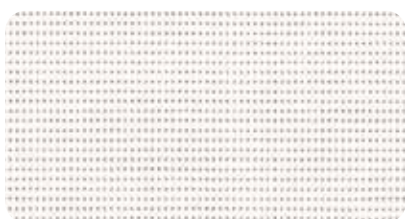
**UV resistant**





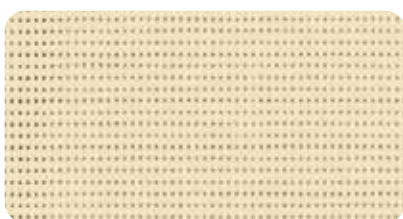
**new Snow white** 177 cm — 267 cm

86-50690



**White** 177 cm — 267 cm

86-2044



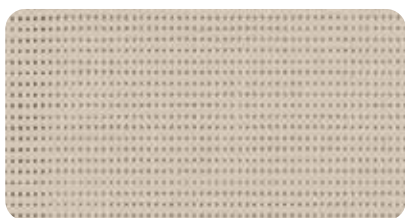
**Champagne** 177 cm — 267 cm

86-2175



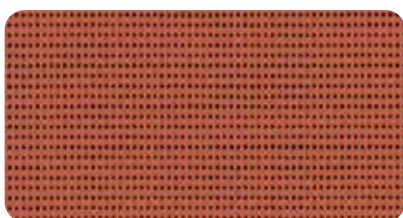
**Pepper** 177 cm — 267 cm

86-2012



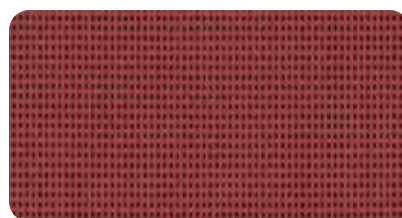
**Sandy beige** 177 cm — 267 cm

86-2135



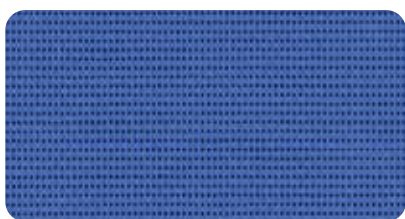
**new Brick** 177 cm

86-51180



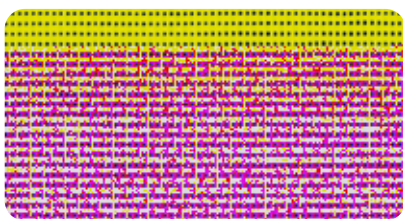
**new Deep red** 177 cm

86-51181



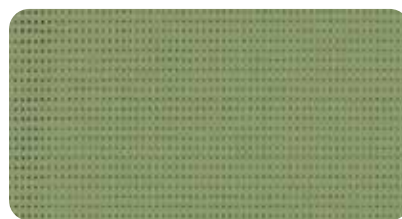
**new Deep blue** 177 cm

86-51182



**new Aniseed** 177 cm

86-2157



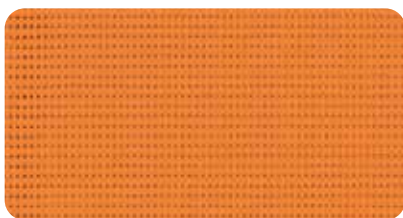
**Moss green** 177 cm

86-2158



**Buttercup** 177 cm

86-2166



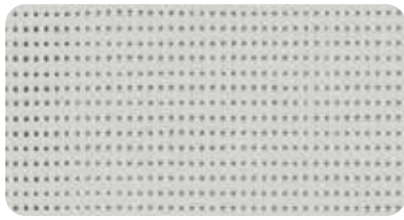
**Orange** 177 cm

86-8204

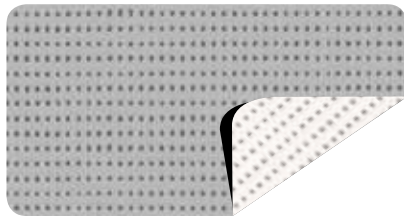


**Red** 177 cm

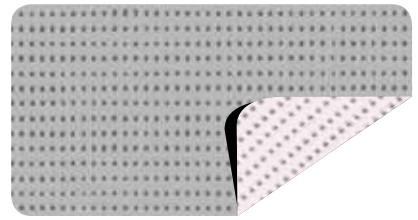
86-8255



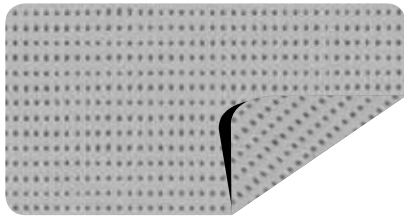
**Boulder** 177 cm — 267 cm 86-2171



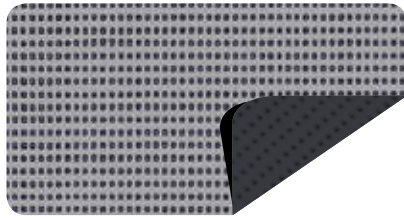
**Alu/White** 177 cm — 267 cm 86-2051



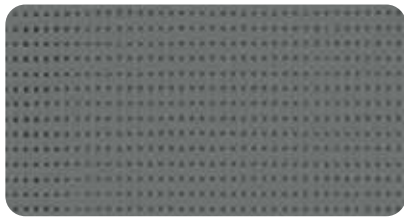
**Alu/Oat** 177 cm — 267 cm 86-2046



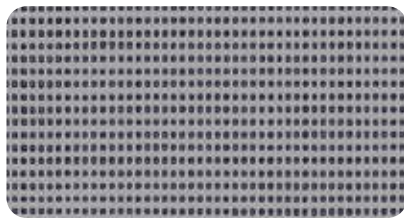
**Alu/Alu** 177 cm — 267 cm 86-2048



**Alu/Anthracite** 177 cm 86-2068



**Concrete** 177 cm — 267 cm 86-2167



**Beaten metal** 177 cm — 267 cm 86-2045



**Bronze** 177 cm — 267 cm 86-2043



**Anthracite** 177 cm — 267 cm 86-2047

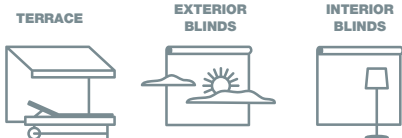


**new Deep black** 177 cm — 267 cm 86-51176

**new** Colours Collection

# A range of colours to match every kind of project

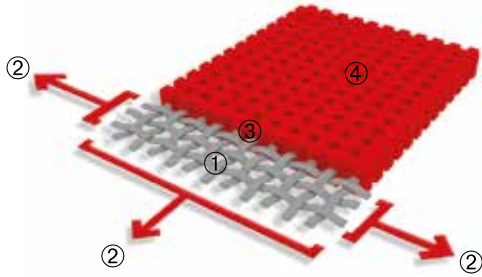
The new Soltis Horizon 86 range features colours designed by our design office to complement the building's entire environment (joinery, openings and facades). The colours present tones that match the most common colours (RAL and NCS references).



**Download**  
our RAL and NCS  
colour correspondence

## ■ Exclusive Precontraint® technology

This unique globally patented technology consists of maintaining the composite in bi-axial tension throughout the manufacturing cycle. This gives our materials outstanding performance allowing them to surpass market standards in terms of dimensional stability, mechanical strength, coating thickness and flatness.



High tenacity polyester micro-cable reinforcement	①	Superior resistance to elongation and tearing
Coating under bi-axial tension, exerted in warp and weft	②	No deformation during implementation and use
Superior coating at the crest of the wires and anti-fouling surface treatment	③	Superior aesthetic and mechanical durability
Extreme flatness and low thickness	④	Smooth, easy to clean surface with small footprint and easy winding

## ■ Solar and light properties (selon EN 14501)

		Width (in cm)		TS	RS	AS	TV n-h	EN13363-2* Glazing D	
		177	267					$g_{tot}^e$	$g_{tot}^i$
86-2012		•	•	18	27	55	16	0.08	0.24
86-2043		•	•	15	11	74	15	0.07	0.28
86-2044		•	•	29	59	12	28	0.11	0.15
86-2045		•	•	16	29	55	16	0.08	0.23
86-2046A		•	•	22	40	38	21	0.10	0.16
86-2046B		•	•	22	55	23	21	0.09	0.20
86-2047		•	•	17	7	76	17	0.07	0.28
86-2048		•	•	19	39	42	19	0.09	0.20
86-2051 A		•	•	22	40	38	20	0.09	0.13
86-2051 B		•	•	22	60	18	20	0.09	0.20
86-2068 A		•		17	31	52	17	0.08	0.23
86-2068 B		•		17	7	76	17	0.09	0.28
86-2135		•	•	24	39	37	22	0.09	0.21
<b>new</b> 86-2157		•		25	44	31	21	0.08	0.21
86-2158		•		18	25	57	16	0.08	0.25
86-2166		•		31	45	24	28	0.11	0.21
86-2167		•	•	17	14	69	17	0.07	0.26
86-2171		•	•	22	36	42	20	0.08	0.21
86-2175		•	•	30	57	13	28	0.11	0.16
86-8204		•		29	41	30	21	0.10	0.23
86-8255		•		21	24	55	14	0.07	0.27
<b>new</b> 86-50690		•	•	28	61	11	27	0.11	0.14
<b>new</b> 86-51176		•	•	14	5	81	14	0.07	0.29
<b>new</b> 86-51180		•		17	24	59	15	0.07	0.26
<b>new</b> 86-51181		•		18	14	68	16	0.08	0.28
<b>new</b> 86-51182		•		18	23	59	15	0.07	0.27

**A:** Aluminium surface exposed to the sun

**B:** Coloured surface exposed to the sun

**TS:** Solar Transmission in %

**RS:** Solar Reflection in %

**AS:** Solar absorption in %

**TS+RS+AS=** 100% of the incident energy

**TV n-h:** Normal Visible light transmission - hemispherical in %

**$g_{tot}^e$ :** External Solar Factor

**$g_{tot}^i$ :** Indoor Solar Factor

\* Detailed  
EN 13363-2 method

Takes into account the spectral values of glazing transmission and reflection + blind complex for calculating the solar factor  $g_{tot}$ .  
Type "D" glazing: insulating double glazing with low emissivity on surface 2 (4 + 16 + 4; Argon filling)  $g = 0.32 - U = 1.1$

# Soltis Horizon 86

## ■ Technical properties

	Technical properties	Standards
Openness factor	14%	
Weight	380 g/m <sup>2</sup>	EN ISO 2286-2
Thickness	0.45 mm	
Width	177 cm - 267 cm	

## ■ Roll length

Standard format: 177 cm	50 lm	
Standard format: 267 cm	40 lm	

## ■ Physical properties

Breaking resistance (warp / weft)	230/160 daN/5 cm	EN ISO 1421
Tear resistance (warp / weft)	45/20 daN	DIN 53.363

## ■ Reaction to fire

Rating	<b>M1</b> /NFP 92-507 — <b>B1</b> /DIN 4102-1 — BS 7837 — BS 5867 — <b>Schwerbrennbar-Q1-Tr1</b> /ONORM A 3800-1 — <b>Classe 1</b> /EN 13373 — <b>M1</b> /UNE 23.727-90 — <b>VKF 5.3</b> /SN 198898 — 1530.3/ <b>AS</b> /NZS <b>G1</b> /GOST 30244-94 — <b>Method 1</b> /NFPA 701 — CSFMT19 — <b>Class A</b> /ASTM E84	
Euroclass	<b>B-s2.d0</b>	EN 13501-1

## ■ Management system

Quality	ISO 9001	
---------	----------	--

## ■ Certifications. labels. guarantees. recyclability



## ■ Tools and services

- ACV and FDES available on request
- Personalised thermal performance simulation service for your projects and associated Soltis solar protection: Get in touch with your Serge Ferrari contact
- Tool for assessing achievable energy savings thanks to Soltis sun protection: [www.textinergie.org](http://www.textinergie.org)
- Document and photo libraries: [www.sergeferrari.com](http://www.sergeferrari.com)

The technical characteristics provided are average values with a tolerance of +/- 5%.

Purchasers of our products are responsible for their application or transformation with regard to any third party rights. Purchasers of our products are also responsible for their implementation and installation in compliance with the destination country's best practices and safety rules. Contractual guarantees are included in the terms of the guarantee.

The values mentioned in this document are based on test results in compliance with study practice. These are provided as indications so that customers can obtain optimal performance from using our products. These are subject to technical improvements and we reserve the right to change specifications at any time. Purchasers of our products are responsible for asserting that the data presented above is in compliance with the validity of the above data.