



ELTEC VOLARE

The Elevator Specialists

We're passionate about supplying Australians with the most beautiful and functional all-electric elevators. As innovators in this space for almost 10 years' we have exclusive access to the best electric lifts. Our superior, more environmental elevators are known for their reliability and our residential range comes with an impressive 7-year warranty.^

Join us as we continue to redefine the elevator industry within Australia.



Latest Technology

Our industry leading elevators are made with the latest cutting-edge technology.



Safety

Our elevators meet the strictest safety standards.



Environmental

Our range includes fully electric, eco-friendly, and cost-efficient elevators.



Experience

We have 100 years of combined experience in the elevator industry.



Quick Installation

You can rely on our team for a quick and seamless installation process.



Full Service

From manufacturing, through to installation and ongoing maintenance; we provide a complete elevator service.

^Terms and Conditions Apply.

Eltec Volare

One of the most affordable and economical lifts on the Australian market. This revolutionary elevator comes complete with a unique, cost effective and easy to install shaft.



Engineered shaft included



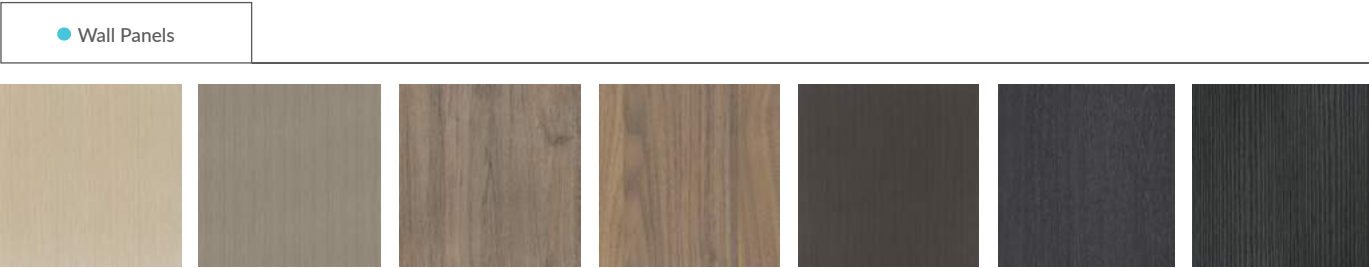
Held in stock

No structural walls required

Note: Glass door shown on this Eltec Volare is non-standard.

Customise Your Elevator

Select from a range of beautiful internal cabin surfaces, which include a curated range of solid colours and embossed woodgrain finishes.



[VIEW ALL OPTIONS ONLINE](#)

General Specification Information

Regulations	Australian and European
Drive system	VVVF all electric traction system
Country of Origin	Manufactured in Italy
Capacity	300KG (wheelchair capacity)
Maximum Travel	7.5m
Number of stops	4
Maximum Speed	0.25m/s
Pit Depth	140mm
Headroom	2400mm
Motor Room	Control Box: 256w x 168d x 1982h
Power	Single Phase / 230v 10A

Eltec Volare

2 stop Eltec Volare featuring Opaque Swing Door
in a white finish.



Eltec Tower

The Eltec Tower is one of the most affordable and easy to install lift shafts within Australia. This innovative product comes included with the Eltec Volare.



Affordable

The cost of the Eltec Tower is included within the cost of the Eltec Volare Elevator. This is unprecedented within the industry and makes it one of the most affordable elevators of its kind on the market.



Configurable

The size of the structure can be adjusted according to various needs; up to a maximum height of 10 metres.



Adaptable

Ingenious and simple fixing system which allows you to adapt the tower on site, directly to its surrounds.



Effortless Surfacing

The Volare Tower is designed to be covered with panels in either wood or strengthened plasterboard. This allows for the easy customisation of external walls.



Easy Installation

The special aluminium frame provides exceptional strength whilst remaining lightweight and easy to manoeuvre. The clever modular system makes for a quick and seamless installation process.

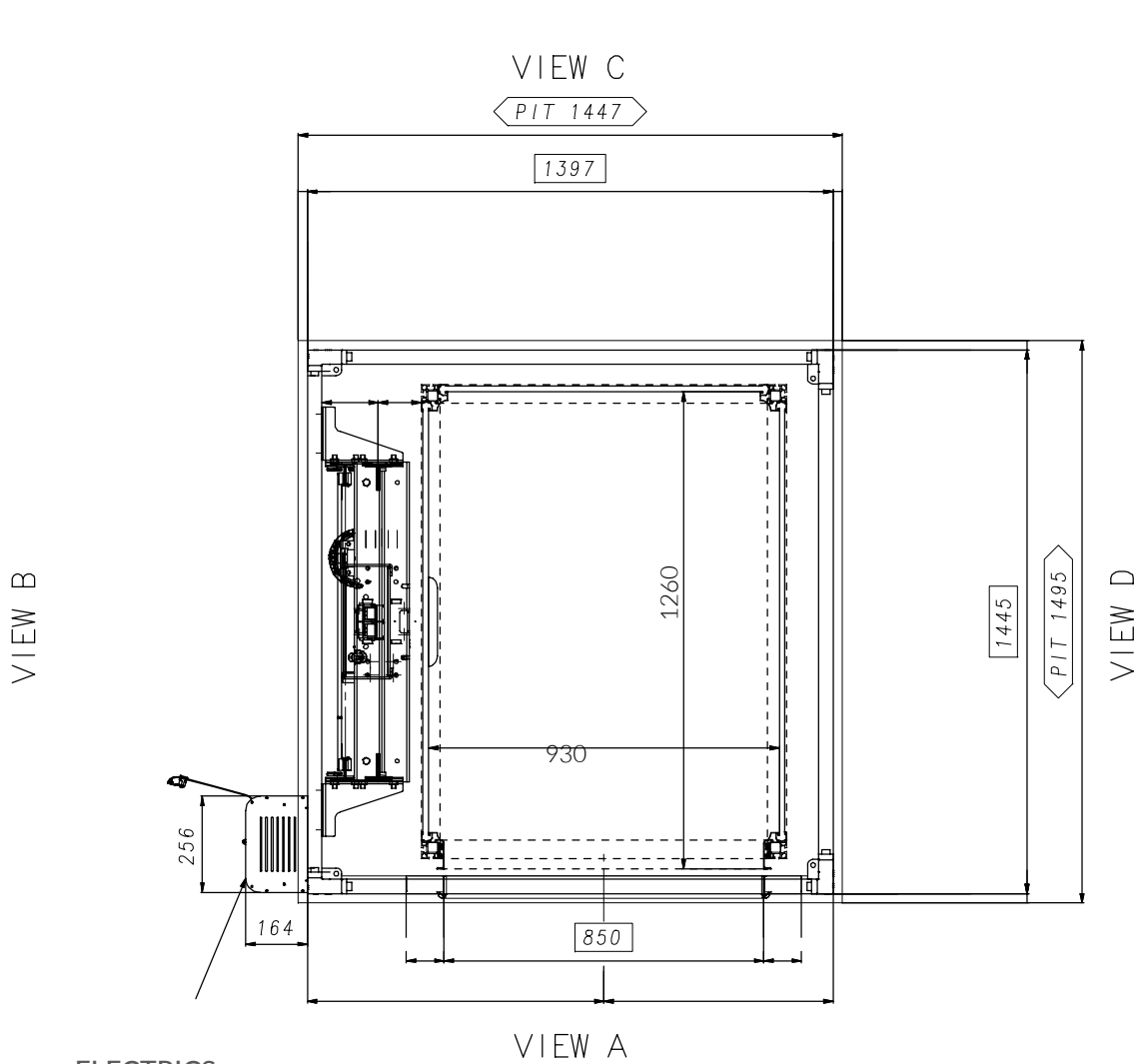
Eltec Volare

3 stop Eltec Volare featuring Steel Swing Door in a white finish.



Single Entrance

The following specification details are for the Eltec Volare with a single entry configuration. Please note: these specifications are for general use only.

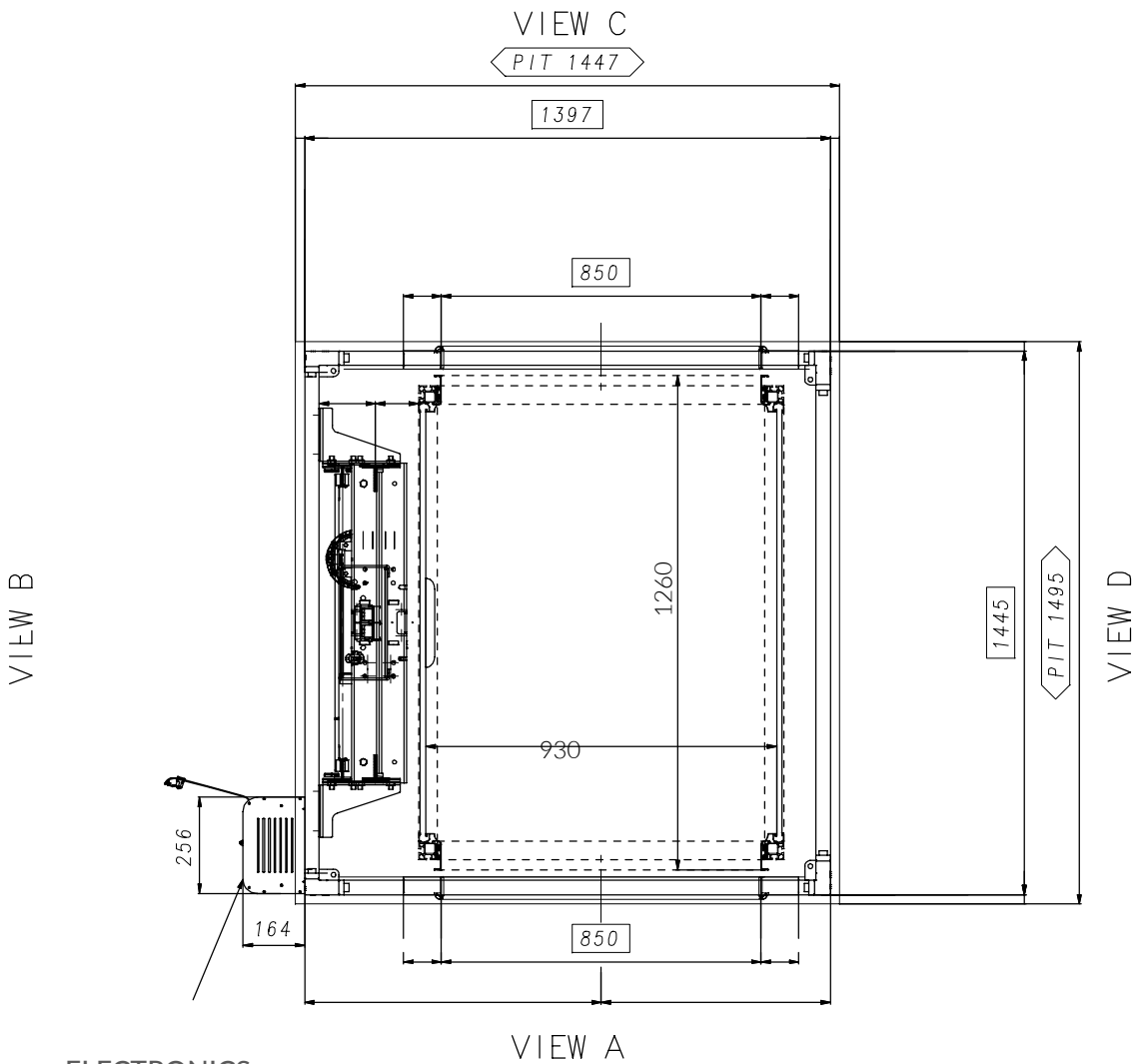


ELECTRICS
CABINET H=1980
ON THE BOTTOM
FLOOR

- PIT MIN: 140MM
- TRAVEL:
2 STOPS MODEL MAX 4000MM
3 STOPS (+1) MODEL MAX 7500MM
- HEADROOM MIN: 2360MM

Through Entrance

The following specification details are for the Eltec Volare with a through entrance configuration. Please note: these specifications are for general use only.



ELECTRONICS
CABINET H=1980
ON THE BOTTOM
FLOOR

- PIT MIN: 140MM
- TRAVEL:
2 STOPS MODEL MAX 4000MM
3 STOPS (+1) MODEL MAX 7500MM
- HEADROOM MIN: 2360MM

Eltec Volare

2 stop Eltec Volare featuring Opaque Swing Door
in a white finish.



**Melbourne Showroom**

456 Smith Street
Collingwood VIC 3066

Sydney Showroom

19/19 McCauley Street
Matraville NSW 2036

Queensland

PO Box 6347
Meridan Plains QLD 4551