

INSTALLATION INSTRUCTIONS

Megasorber FM, FG and P Range Lightweight Acoustics Panels

These recommendations are for general guidance only. Installation methods must be tested under actual service conditions to determine their suitability for a particular purpose.

1. Keep Sheets Flat:

Sheets *must be kept flat* during the handling and installation process. Bending or folding sheets may create creases on the Soundmesh G8 facing. Once formed, these creases are difficult to remove.

2. Cutting:

The product can be hand-cut by a knife or machine-cut by a bench saw or rotating blade cutter with a fine tooth blade.



Knife cut by hand: it is recommended using a sharp Stanley and/or serrated knife.



Note: It is recommended to wear gloves during cutting. The Soundmesh G8 facing edges may irritate or cut the skin.

3. Direct-fix: Installing panels with adhesives

Substrate surface preparation: The surface must be flat, dry and free of oil, dust, grease and other contaminants. Clean substrate with Megasorber AC5 or similar.



Megasorber AC5
Adhesive Cleaner



Megasorber A200
High-Tack, High-Temperature
Resistant Adhesive



Megasorber A100
Fast Drying, High-Tack
Spray Adhesive

This document and the ideas expressed herein are the sole property of Megasorber Pty Ltd © Copyright

Megasorber is the Registered Trade Mark of Megasorber Pty Ltd
Building 1, 25 Chapman Street, Blackburn North, Vic 3130, Australia
Current Version Date: 24 February 2019 R1
Page 1 of 7

E-mail: info@megasorber.com
Telephone: (03) 9077 2918
Fax: (03) 9898 9838
Website: www.megasorber.com



Megasorber AC5 Adhesive Cleaner

Megasorber AC5 Adhesive Cleaner is recommended for adhesive removal and surface cleaning.

Option 1: Megasorber A200:

- (1) High-Tack, High Temperature Resistant Adhesive.
- (2) An odourless and fast curing adhesive.
- (3) It is specifically designed to provide instant holding of the FM F acoustic foam.
- (4) Adjustable: panel can be re-positioned within 7 minutes of application.
- (5) Recommended usage:
 - about one cartridge (290ml) per 1.2m x 1.2m panel;
 - 1.5 to 2 sausage (600ml) per 1.2m x 2.4m panel.

Option 2: Megasorber A100 High-Tack Spray Adhesive

- (1) An air-less spray adhesive system.
- (2) Specifically designed for installing Megasorber acoustic panels.
- (3) It is supplied in a canister (17.2kg) or as an aerosol (500ml).
- (4) *Estimated coverage:* about 99m² per canister and about 4m² per aerosol.

Please note that we recommend A100 on a smooth surface, such as refrigeration panels, plasterboards and metal panels. We recommend using A200 if the surface is un-even or textured, such as concrete soffit and brickwork.

Photos below show the installation process. Please follow this video link to view the installation process: <http://www.megasorber.com> "Installing Megasorber Panels with A200 adhesive".

- *Installing Megasorber acoustic panels onto the walls with A200:*



(1) Application of adhesive



(2) Installing the panel



(3) Finish

- *Installing Megasorber acoustic panels onto the ceiling using A200 with shadowing finish:*



- Installing Megasorber acoustic panels onto the ceiling and walls using A200 with shadowing finish:

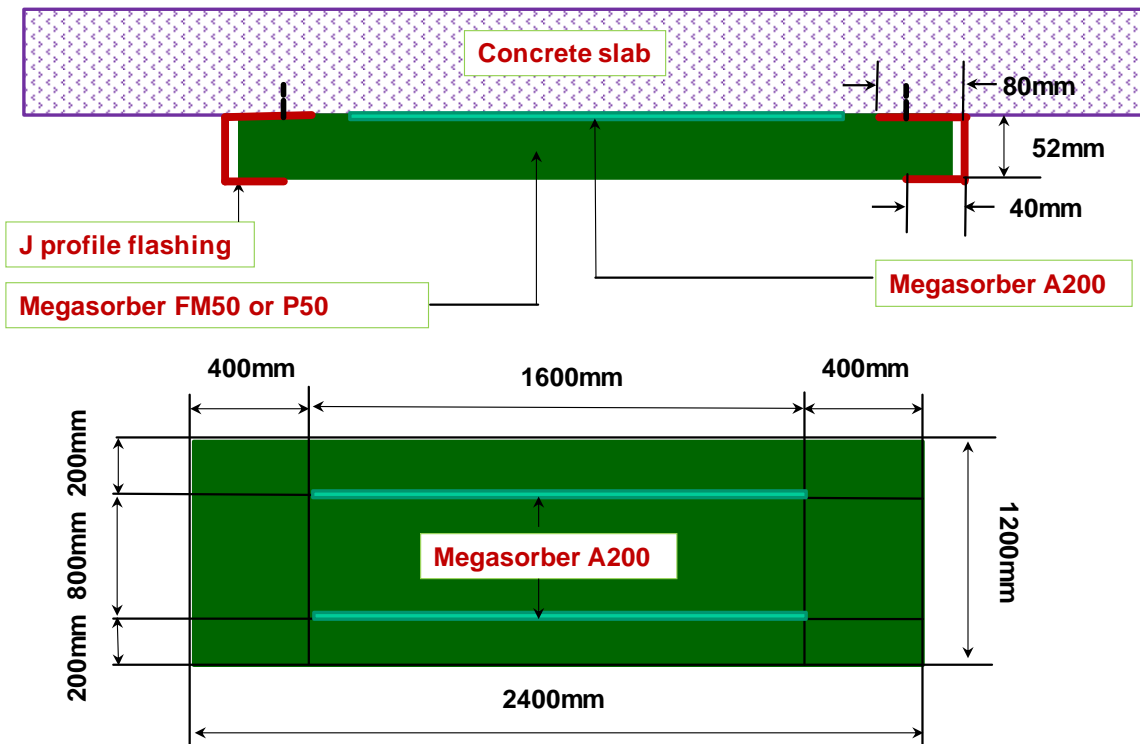


- Installing Megasorber acoustic panels onto the walls using A200 with shadowing finish:



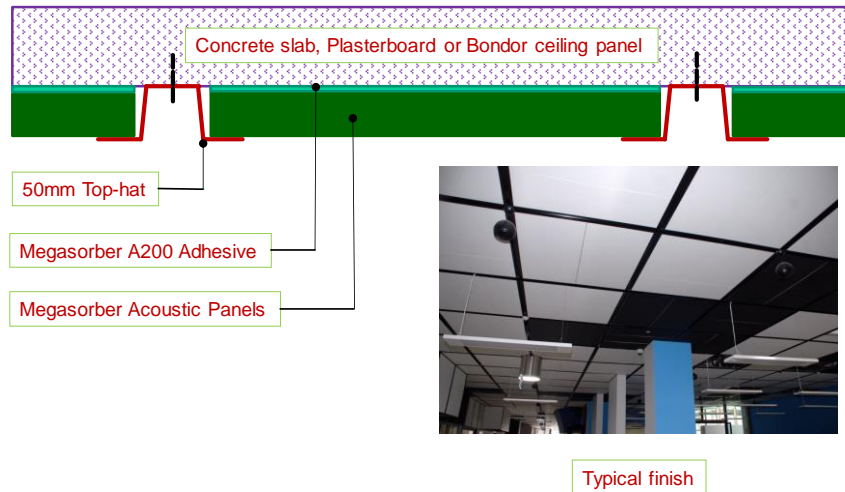
- Installing Megasorber acoustic panels onto the ceiling and walls using A200 with J profile flashing finish:

**Direct-fix onto Concrete Slab with Megasorber A200 Adhesive
Megasorber FM50 and P50 Acoustic Panels**

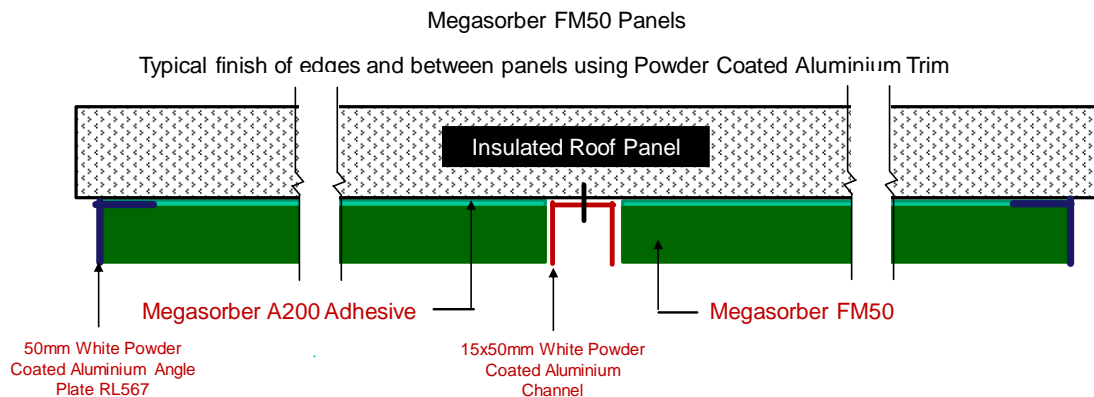


This document and the ideas expressed herein are the sole property of Megasorber Pty Ltd © Copyright

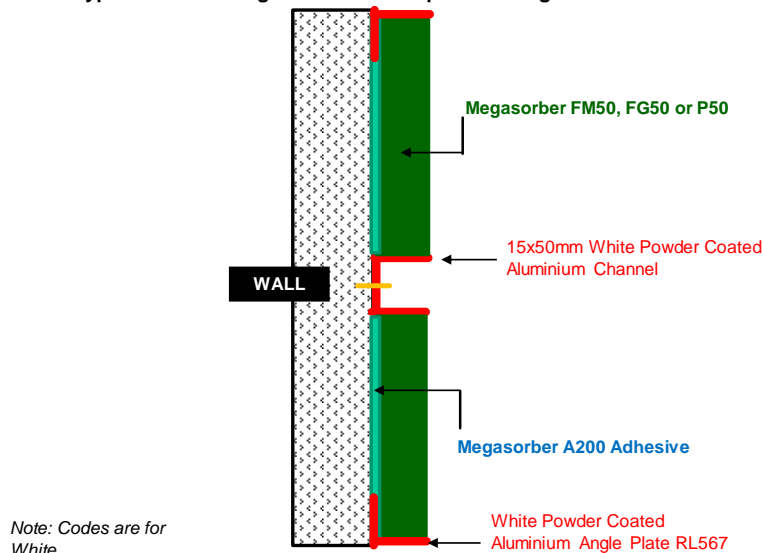
- Installing panels using Megasorber A200 adhesive with aluminium or metal top-hats on concrete slab, plasterboard or Bondor panel ceiling:



- Installing panels using Megasorber A200 adhesive with powder coated aluminium or trims on a concrete slab, plasterboard or Bondor panel ceiling and walls:



Typical finish of edges and between panels using Powder Coated Aluminium Trim



Note: Codes are for White, but can be other colours

This document and the ideas expressed herein are the sole property of Megasorber Pty Ltd © Copyright



4. Direct-fix: Installing panels onto concrete soffit directly with mechanical fixing method:

Concrete pins are recommended. A typical mechanical fastening system is shown below:

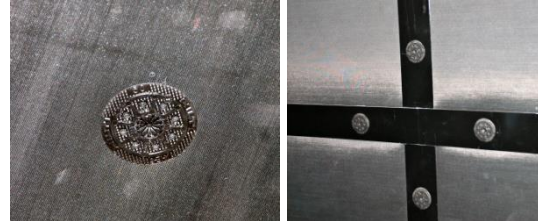
Powder-actuated Tool



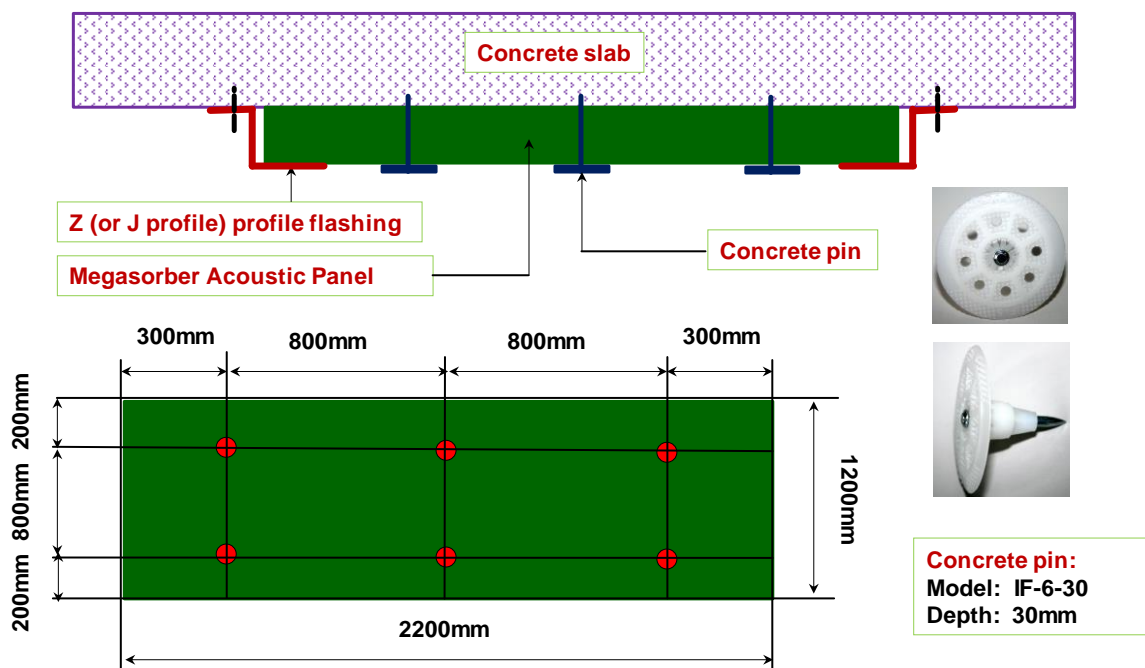
Pin



Megasorber installed on ceiling and wall with pin

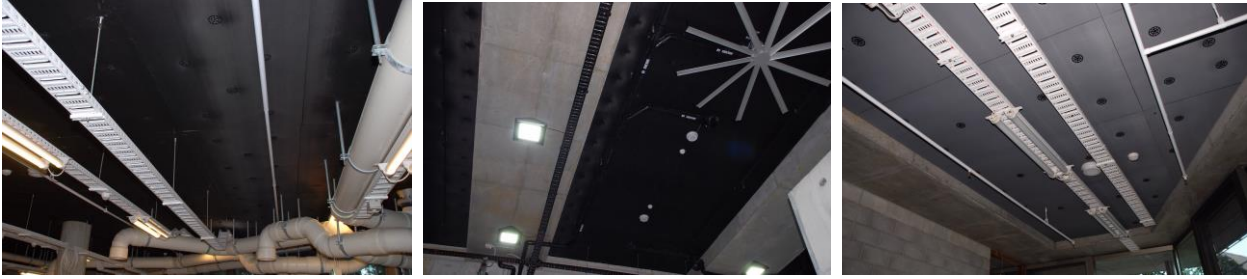


Direct-fix of Megasorber Acoustic and Thermal Insulation Panels with Concrete Pins



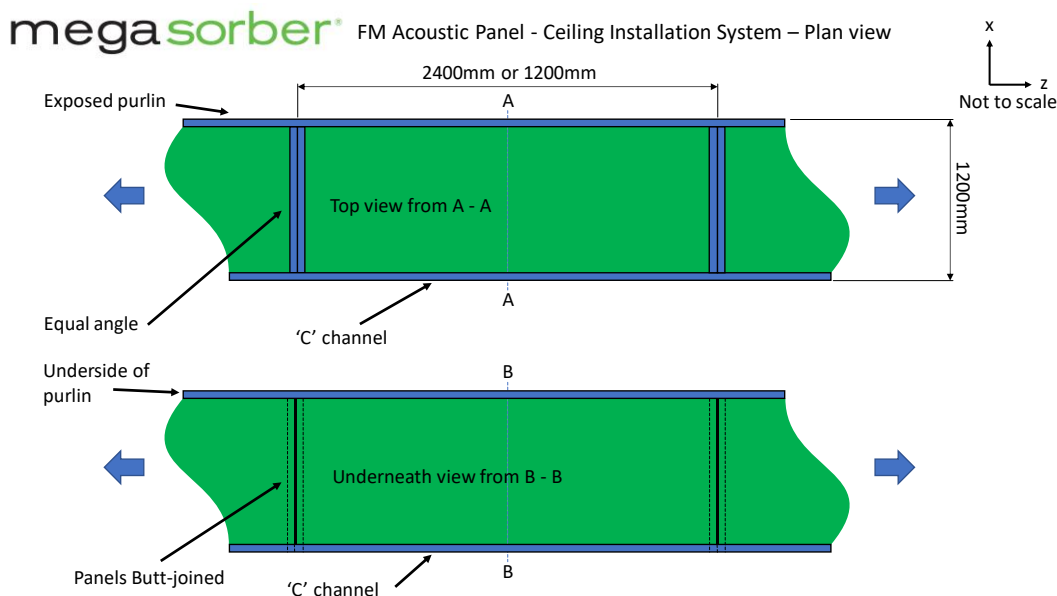
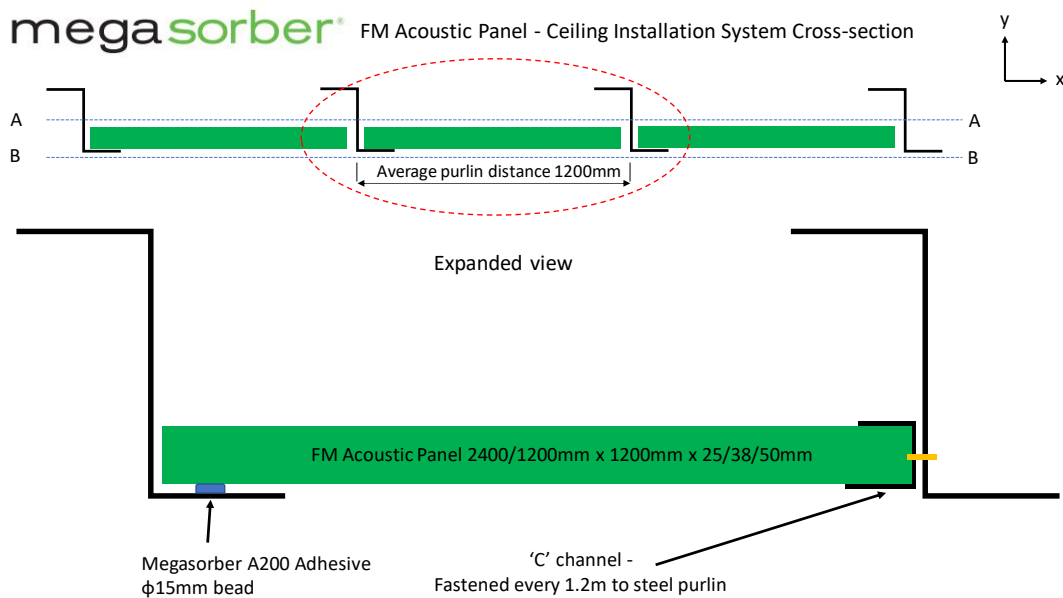
This document and the ideas expressed herein are the sole property of Megasorber Pty Ltd © Copyright

- Installing Megasorber panels onto the concrete slab ceiling with pins:



5. Installing panels between purlins:

The following drawings show how Megasorber panels can be installed between purlins:



This document and the ideas expressed herein are the sole property of Megasorber Pty Ltd © Copyright

6. Installing Megasorber Panels in a suspended ceiling grid:

Typical finish is shown below:



7. Seal joints with colour-matching self-adhesive tape:

Alternatively, a matching Soundmesh G8 Tape can be used to seal the edges and joints; The standard Soundmesh G8 colours are: Black (B), White (W), Grey (G) and Sandstone (S) Tape.



Megasorber Soundmesh G8-T75 tape

Recommendations for applying the Soundmesh G8 tape are as follows:

- The substrate surface must be flat, dry, free of oil, dust, grease and other contaminants.
- Soundmesh G8 tape must be firmly pressed against the substrate upon application to ensure the adhesive has full contact with the substrate.
- The ambient temperature for application is recommended to be above 10°C.
- For products with water / fluid repellent G8 facing, the G8 tape can be applied with heat and pressure, such as an iron or a hot air-gun plus a pressure roller.

Typical finish after installation with Soundmesh G8-T75 tape sealing joints:

