

CORNICES

Products and Applications



CONTENTS

GENERAL INFORMATION	1
Introduction	1
Cornices	1
1.0 SHEETROCK® COVE	4
1.1.SHEETROCK® Cove 55mm	5
1.2.SHEETROCK® Cove 75mm	5
1.3.SHEETROCK® Cove 90mm	5
2.0 DECORATIVE CORNICE	6
2.1. Cairo 3 Step 75mm	7
2.2. Linear 75mm	8
2.3. Sydney 90mm	9
2.4. New York 90mm	9
3.0 INSTALLATION	10
3.1. Handling & Layout	11
3.2. Cutting	11
3.3. Fixing	11

INTRODUCTION

Today Knauf is one of the world's leading manufacturers of modern insulation materials, drylining systems, plasters and accessories, thermal insulation composite systems, floor screed, floor systems, and construction equipment and tools. With more than 250 production facilities and sales organisations in over 86 countries, 35,000 employees worldwide, and sales of 10 billion Euro (in 2019), the Knauf Group is, without doubt, one of the big players on the market – in Europe, the USA, South America, Russia, Asia, Africa and Australia.

Knauf's aim is to be the market leader for safe, healthy, and comfortable design of living spaces. With the most experienced, talented, and diversified people operating over 30 production facilities across the region, we deliver the high-quality products required for the construction of sustainable, safe and comfortable buildings. With an extensive distribution and sales network, our dedicated teams provide expertise backed by unparalleled quality service to provide the right solutions for your needs.

At Knauf, we are committed to delivering only the best to you – our customers and partners. For more information on Knauf refer to knaufapac.com

CORNICES

Knauf offers a range of paper-face cornices, from SHEETROCK® Cove to Decorative Cornice profiles that will complement a variety of decors. This includes classic, modern and contemporary interior designs.

When renovating, consider retrofitting the New York 90mm or Sydney 90mm profiles over existing Cove 55mm, without the need to remove the old cornice.

All Knauf cornices consist of a gypsum core, encased in a strong 100% recycled paper liner. They are manufactured to stringent Knauf product quality specifications.

1.0

SHEETROCK® COVE

SHEETROCK® Cove is Knauf's new lightweight paper-faced cove cornice with high strength-to-weight composite design providing great rigidity for ease of handling and installation. It is easy to cut, mitre and clean up.

The classic clean lines and consistent profiles makes it the perfect choice to complement all types of residential and commercial interiors. SHEETROCK® Cove is manufactured with high strength-to-weight composite design and encased in 100% recycled paper, meeting stringent Knauf product quality specifications.



1.0 SHEETROCK® COVE

SHEETROCK® COVE CORNICE

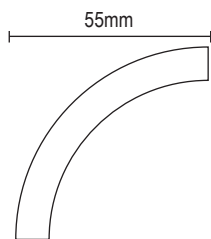
Using innovative core technology, SHEETROCK® Cove is 5% lighter than previous Knauf Cove products* and has high strength-to-weight composite design. Encased in a strong 100% recycled paper liner, SHEETROCK® Cove provides a more rigid cornice, making carrying, handling and installing easier. It is ideal for residential and commercial internal ceiling applications. It is available in 55, 75 and 90mm profile sizes and 4800 mm lengths.

*Compared to Knauf Standard Cove 55, 75 and 90mm.



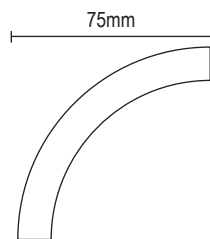
1.1 SHEETROCK® Cove 55mm

Feature	Description
Size	55mm
Length	4800mm
Mass	58kg/100Lm (nominal)



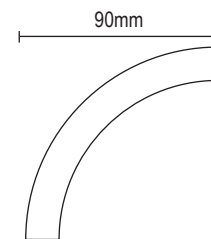
1.2 SHEETROCK® Cove 75mm

Feature	Description
Size	75mm
Length	4800mm
Mass	90kg/100Lm (nominal)



1.3 SHEETROCK® Cove 90mm

Feature	Description
Size	90mm
Length	4800mm
Mass	118kg/100Lm (nominal)



2.0 DECORATIVE CORNICE

Knauf offers a range of paper-faced decorative cornices that will complement a variety of decors including classic, modern and contemporary interiors.

Knauf decorative cornices, such as New York 90mm and Sydney 90mm can be retro-fitted over existing square sets or Cove 55mm. All decorative cornices come at a standard length of 4.8m.

All Knauf decorative cornices consist of a gypsum core encased in a strong 100% recycled paper liner and are manufactured to stringent Knauf product quality specifications.



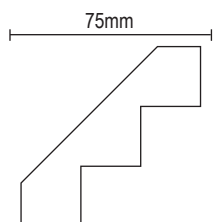
2.0 DECORATIVE CORNICE



2.1 Cairo 3 step 75mm

The Cairo is stepped and sharply defined with clean crisp angles. This distinctive angular cornice is available in 2 step and 3 step profiles, making it easy to create a sensation of height and space in any room. Cairo's aesthetically striking profile can be used across a diverse range of decors, especially lending itself toward modern interiors.

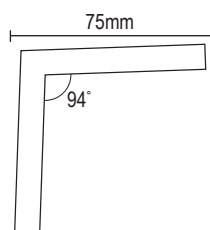
Feature	Description
Size	75mm
Length	4800mm
Mass	150kg/100Lm (nominal)



2.2 Linear 75mm

For the discerning individual looking for the next generation in cornice, Linear is at the forefront of contemporary design. Characterised by its minimal architectural lines, the stylish 75mm square edge profile is a perfect complement for modern residential and commercial interiors. An ideal upgrade from Cove cornice, Linear is the obvious design alternative when considering a square edge finish.

Feature	Description
Size	75mm
Length	4800mm
Mass	135kg/100Lm (nominal)



2.0 DECORATIVE CORNICE



2.3 Sydney 90mm

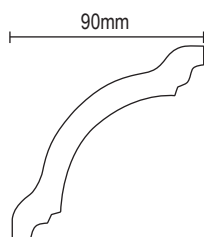
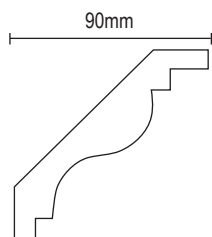
With its combination of smooth curves and straight lines, Sydney is a stunning 90mm decorative cornice that adds style and elegance to any room. An ideal upgrade from Cove cornice, Sydney exemplifies a classic timeless look and is bound to provide visual dominance to a broad selection of interior types. Sydney cornice can be retro fitted over Cove 55mm cornice. (If the Cove cornice is out of projection, modification of the mitre will be required).

2.4 New York 90mm

The clean, straight lines and sleek curves of New York cornice combine understated elegance with a modern edge. This stylish 90mm profile adds an element of refinement, sophistication and space to a room, minus the exclusive price tag. New York decorative cornice is perfect for renovations, as there is no need to remove the existing Cove 55mm cornice – New York can simply be installed over the top.

Feature	Description
Size	90mm
Length	4800mm
Mass	160kg/100Lm (nominal)

Feature	Description
Size	90mm
Length	4800mm
Mass	150kg/100Lm (nominal)



2.0 DECORATIVE CORNICE



3.0 INSTALLATION

The installation specifications provided are applicable to Knauf paper-faced cornices including SHEETROCK® Cove and the Decorative range.



3.0 INSTALLATION

3.1

HANDLING & LAYOUT

- Ensure cornices are stacked neatly away from traffic areas to protect profile and prevent damage.
- Cornice should be carried and handled 'on edge' to avoid cracking the core or wrinkling the paper liner.
- Where possible, use full lengths of cornice and mitre all corner and butt joints.
- Ensure accurate and level placement by marking ceiling and walls with a line at the cornice edge.
- Install shorter lengths of cornice first then fit longer lengths by bowing out to spring mitres into place.

3.2

CUTTING

- Measure, mark and cut cornice with a mitre cut each end, using a fine-tooth saw and a mitre box.
- Cut internal angles from the long point, and external angles from the short point.
- Check each cut piece of cornice for actual fit.
- Measure and pre-cut cornice to length before mixing the cornice adhesive.

3.3

FIXING

- Fix cornice to plasterboard walls and ceilings using Knauf Cornice Adhesive with nails as temporary support for at least 20 minutes.
- If cornice is fixed to fibre cement linings, thoroughly wet the fibre cement at cornice line to prevent premature cornice adhesive dry-out and cracking at bottom edge.
- Apply 10mm bead of Cornice Adhesive to top and bottom cornice edges.
- All mitres and joints should be buttered with Cornice Adhesive.
- Painted surfaces require scoring or abrading, or both, to provide an adequate key prior to the application of cornice adhesive and cornice.
- Cornice must be mechanically fixed around cupboards and onto timber beams.
- In hot and dry conditions, take care to avoid premature drying of adhesive and subsequent loss of adhesion. In these conditions, surfaces may need to be slightly dampened.
- Refer to Garage and External Ceilings or online for additional installation requirements in these areas.
- When adhering cornice to masonry wall, apply Cornice Adhesive to the back of cornice so that it does not squeeze out under the bottom edge.
- Only mix quantities of Cornice Adhesive that can be used before setting commences.
- Use clean potable water and clean containers for mixing.
- Add Cornice Adhesive powder to water and mix to a usable paste.
- Avoid over-mixing as this may accelerate setting.
- Addition of other materials to Cornice Adhesive could impair its performance and is not recommended.



KNAUF SERVICES



TECHNICAL ASSISTANCE

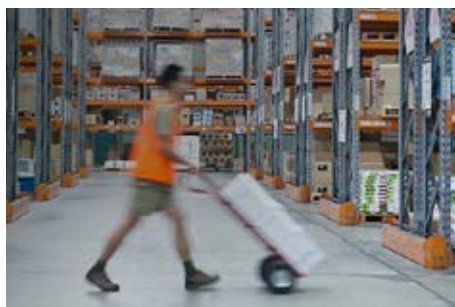
TecASSIST™ – 1800 811 222

Our National TecASSIST™ helpline is available to answer technical questions and provide free advice to builders, contractors, architects, engineers and home owners throughout Australia.

There are many variables that can influence construction projects, which affect whether a particular construction technique is appropriate. Before proceeding with any project, we recommend you obtain professional advice to ascertain the appropriate construction techniques to suit the particular circumstances of your project. We recommend you use qualified tradespersons to install this system.

The technical information contained in this manual was correct at the time of printing. Building systems, details and product availability are, however, subject to change. To ensure the information you are using is current, Knauf recommends you review the latest building information available on the Knauf website.

For further information, contact TecASSIST™ or your nearest Knauf sales office.



WHERE TO BUY

1800 003 377

If you are wondering where to buy plasterboard and other building materials such as cornice, compounds, ceilings and plastering tools, you can be confident that wherever you are located in Australia, you will be able to find a convenient Knauf store or stockist near you using our store finder.



DOCUMENT FINDER

knaufapac.com/au/resources

Find a Knauf product brochure, installation manual, Product Data Sheet or Whitepaper with the new document finder tool.

See knaufapac.com for the most up-to-date product information.

© 2018, 2022* Knauf Gypsum Pty Ltd. All rights reserved. The trademarks KNAUF, TECASSIST, PREMIUM BOND, PARTIWALL, MULTIFRAME, INTRWALL, SOUNDSTOP, FIRESTOP, SHAFTLINER, WETSTOP, FIRE+WETSTOP, FIREPACK and WET AREA SEALANT are trademarks of Knauf Gypsum Pty Limited or one or more of its affiliates, including Knauf Gips KG. SHEETROCK and FIBEROCK AQUA-TOUGH are a registered trademark of United States Gypsum Company and used under license. VILLABOARD is a registered mark of James Hardie Technology Limited. FIRESOUND is a trademark of HB Fuller. TRACK-IT is a registered trademark of Powers Fasteners Australasia Pty Ltd. TYVEK HOMEWRAP is a registered trademark of E. I. du Pont de Nemours and Company or its affiliates. PROMASEAL is a registered trademark of PROMAT GMBH. PYROSLEEVE and MULTIFLEX are trademarks or registered trademarks of Pyropanel Developments Pty Ltd. Knauf Gypsum Pty Ltd. – ABN 84 004 231 976 251

Knauf Gypsum Pty Limited.
3 Thackeray Street,
Camellia NSW 2142
Australia

knaufapac.com