



LINEAR

TECHNICAL ASPECT

Construction: Woven Loop Pile

Composition: 100% PA 6.6 Ascend Ultron

Secondary Backing: textile (action bac) / Felt (silent Bac)

Stitches per m²: 108.000m²

Total Height: 4.00/ 5.00mm

Pile Weight: 750g/m²

Total Weight: 2.200/ 2.600g/m²

Roll Width: 400cm

Use: Commercial Heavy



Level 1, 68 Sophia Street
Surry Hills, NSW 2010

1800 239 237 (1800 2FYBER)
info@fyber.com.au
@fyber_flooring

www.fyber.com.au

FYBER



AFTER DARK
358290



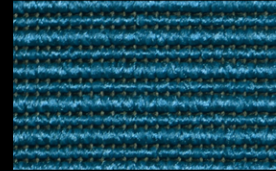
ANTRAZITE
358380



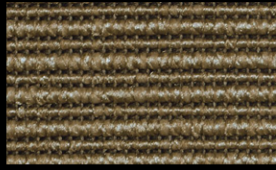
BELUGA
358370



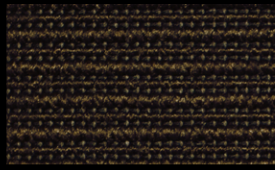
BLUE NIGHTS
358880



BLUEBIRD
358820



BOULDER
358100



BRACKEN
358270



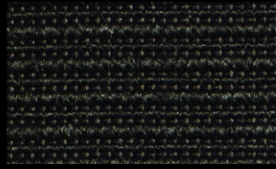
BROWN SUGAR
358480



BRUNDLE
358180



CATHY SPICE
358490



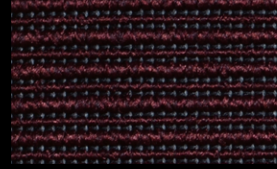
CAVIER
358360



CHESTNUT
358260



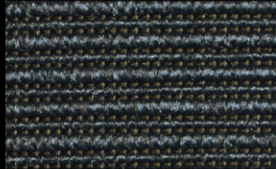
CHOCOLATE BROWN
358280



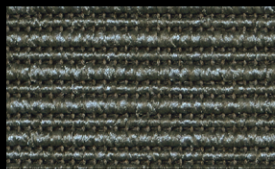
CORDOVAN
358650



DOESKIN
358200



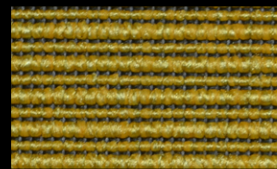
FLINTSTONE
358800



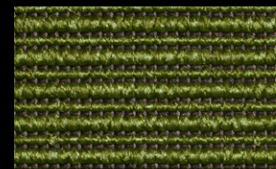
FROST GREY
358320



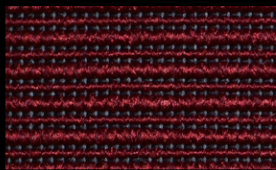
JUNGLE GREEN
358780



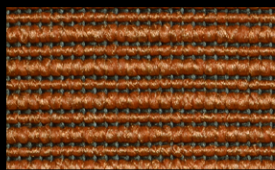
LEMON
358400



LIME GREEN
358700



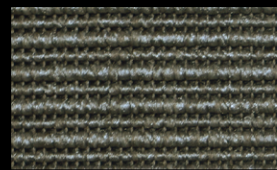
LIPSTICK RED
358620



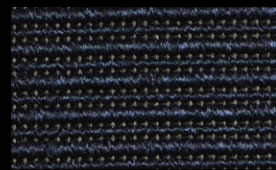
MADARIN ORANGE
358500



MIDNIGHT NAVY
358890



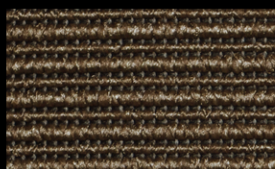
PALOMA
358300



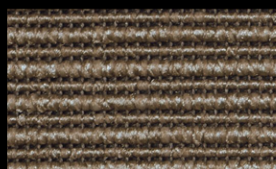
PEACOCK 358850



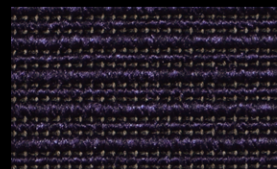
PEWTER
358350



PRALINE
358220



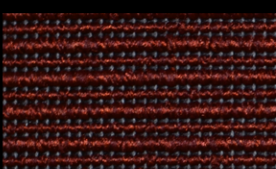
PUMICE STONE
358120



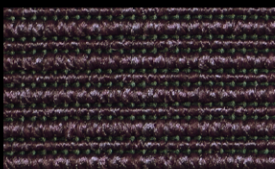
PURPLE VELVET
358680



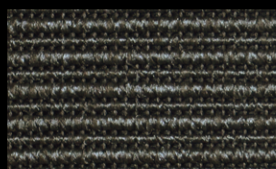
RAVEN
358390



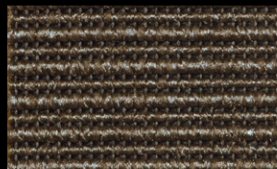
RIO RED
358550



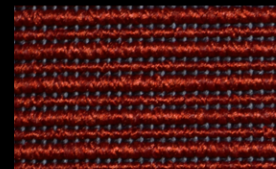
ROSE WINE
358670



STEEL GREY
358330



STRING
358150



TANGO RED
358600



WINEYARD
358660



WINTER GREEN
358750

Level 1, 68 Sophia Street
Surry Hills, NSW 2010

1800 239 237 (1800 2FYBER)
info@fyber.com.au
@fyber_flooring

www.fyber.com.au

FYBER