



The New Eureka Modular Restroom Series

10 YR
SUPPLY ONLY
GUARANTEE*



20 YR
SUPPLY & INSTALL
GUARANTEE*



100%
AUSTRALIAN
MADE

*Structural warranty on orders



1D2C (Premium)



1D (Standard)



1D (Premium)



1D1C (Standard)



1D1C (Premium)

About Landmark Products

Landmark Products offers a complete, professional open space structure and furniture service throughout Australia and abroad.

From design through to manufacturing and installation, Landmark Products can deliver a total project solution.

With over 30 years' experience, and a team of highly skilful, expert specialists in public use infrastructure - Landmark Products is committed to exceeding the expectations of our clients, whether for a relatively straightforward project such as to supply street furniture, or for complex, large scale, custom built urban projects.

Contents

Features & Benefits	3
Finishes & Colour Ranges	4
FAQs	5
Eureka Modular Restroom Series	6-11
Why Landmark Products?	12



Features

- **Contemporary Designs**
 - Blend into all open space environments
 - Series includes 1D, 1D1C and 1D2C in order to meet your specific community needs
 - D = Large cubicle for people with disabilities
 - C = Standard cubicle size
- **Made with Quality Materials and Finishes**
 - 100% Australian Made
 - Withstand public use in all Australian environments
- **Warranty Available**
 - 10 year supply only
 - 20 year supply and installation
- **National Installation Service**
- **Full Site Specific Engineering Certification (All Structures)**
- **Wind Classification of C2 (Cyclonic Regions)**



Benefits

- **Time**
 - On average, a modular building is constructed 50% faster than one using traditional methods
 - Delivered using direct haul from factory, non-stop transport to site - reducing risk of damage
- **Relocatable**
 - Ability to lift out modular buildings and re-use in other locations
- **Testing & Commissioning**
 - Performed by highly skilled personnel, any potential faults are identified prior to site delivery
- **Budget**
 - Modular buildings can be more affordable than site-built buildings
 - Shorter build time tends to mean significant cost savings
 - There are decreased obstructions in the process of waiting for materials
- **Weather**
 - As the major parts of construction are carried out in a factory, the risk of being rained off is reduced with modular builds
 - Vandalism presents to be far less of a problem as a result
- **Health, Safety & Quality**
 - Factory conditions allow for far greater control and improvement of health, safety and quality compared with the traditional building site
- **Environmentally Friendly**
 - Modular builds demonstrate a higher energy-efficiency and creates less waste
 - Reduction in the carbon footprint of the build as fewer people are travelling to and from the site
- **Reduced Community Disruption**
 - Modular builds create less noise, traffic, mess and disruption for the local community

Finishes

	Premium Finish	Standard Finish
Roof	Colorbond** Cooldek roof (100mm)	Pre-cut Colorbond**, Trimdek roof sheeting
Roof Lights	Cooldek light boxes	Webglas roof sheeting
External Wall Cladding	Aluminium Ultra Clad wall system (Shadowline horizontal)*	Colorbond**, horizontal custom orb
Internal Wall Cladding	Aluminium composite panel***	Colorbond**, horizontal maxi rib
Ventilation Screens	Powder coated aluminium ventilation screens (perforated mesh)*	Powder coated aluminium ventilation screens (perforated mesh)*
Cubicle Doors	Stainless steel clad hollow core doors	Colorbond** steel clad hollow core doors
Service Duct Doors	Stainless steel clad hollow core doors	Colorbond** steel clad hollow core doors
Floor Substrate	18mm CFC floor sheeting	18mm CFC floor sheeting
Floor Finish	Commercial non-slip tiles (Charcoal)	Slip resistant painted finish (Charcoal)
Wall Frames	Galvanised steel wall frames	Galvanised steel wall frames
Structural Steel	Hot dipped galvanised and powder coated steel roof frame and posts*	Hot dipped galvanised and powder coated steel roof frame and posts*
Structural Steel - Sub Floor	Hot dipped galvanised steel sub floor frame	Hot dipped galvanised steel sub floor frame
Anti Vandal Fixing	Landmark Products proprietary anti-vandal fastening system	Landmark Products proprietary anti-vandal fastening system
Fixings - General Other	Stainless steel	Galvanised
Options	Gutters and downpipes**, electrical fitout	
Colour Ranges	* Dulux Powder Coat, ** Colorbond Standard, *** ACM Selection	

Colour Ranges



Dulux Powder Coat



Colorbond Standard



ACM Selection

Brochures available for download from the Landmark Products website

FAQs

Does Modular Construction use inferior materials?

No. All the same materials, fixtures and fittings that are used in traditional construction are also used in modular construction. We use a range of leading brands in the construction of our buildings and are proud of the quality that comes with Landmark Products.

How does Modular Construction work?

Modular building uses Landmark Products' state of the art, purpose-built factories to complete much of the construction task in a production line environment. Skilled tradespeople work as a team to deliver a high quality, reliable and consistent building, that is then tested and transported to site. Assembly on-site is a relatively quick and easy process, as the building is completed and any services (e.g. electricity, water and the like) are connected and tested.

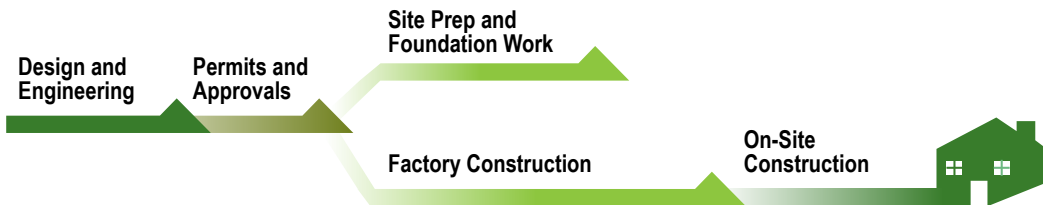
How is Modular Construction faster than traditional construction?

With much of the building work taking place off-site in purpose-built factories, delays due to adverse weather are all but eliminated. Also, time spent on-site is significantly reduced. Depending on the complexity of the site and design, the on-site time could be as little as 2-4 days!

SITE BUILT CONSTRUCTION TIMELINE



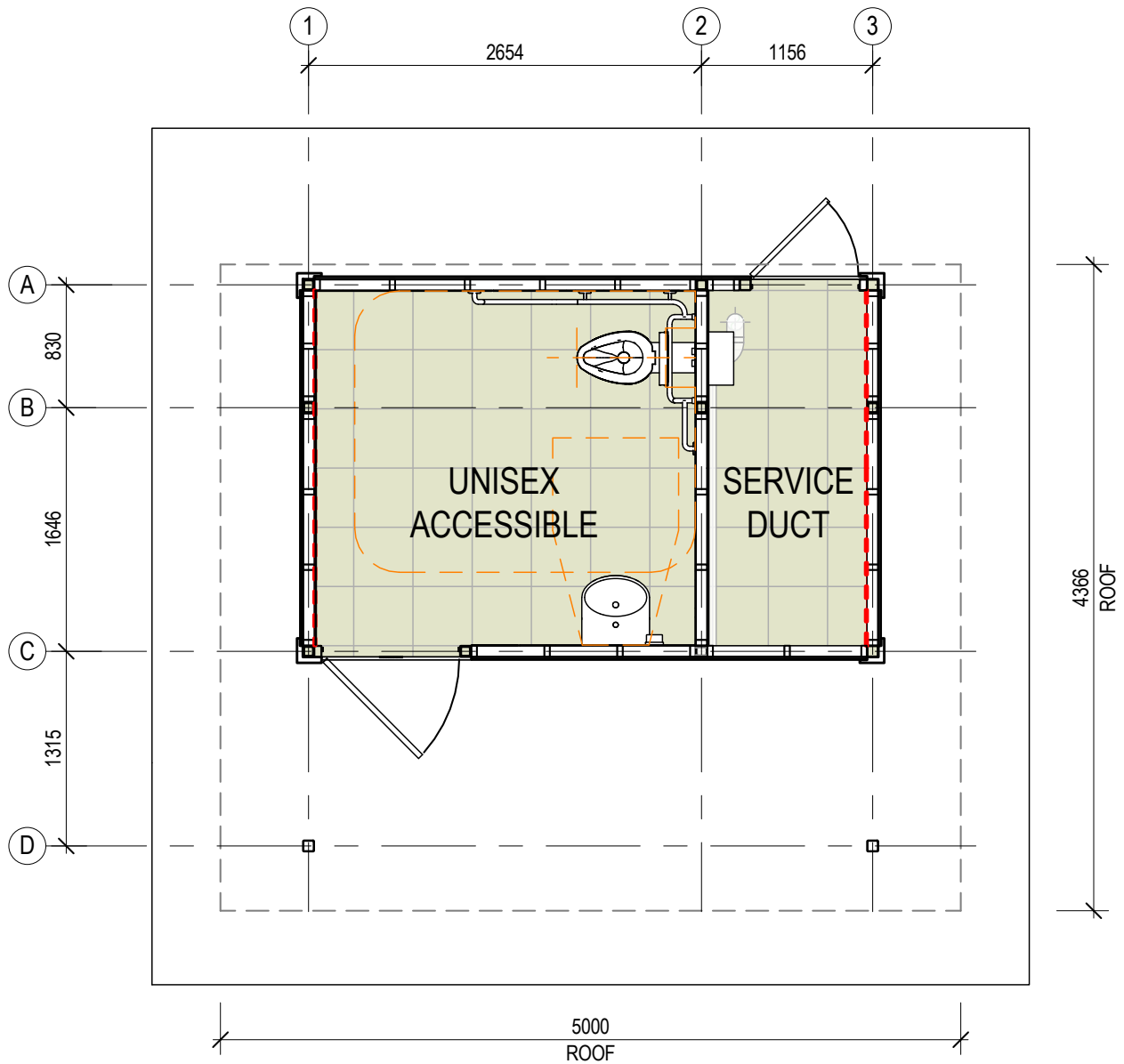
MODULAR CONSTRUCTION TIMELINE



	LMK Modular Build	LMK Standard Build	Conventional Build
Factory controlled construction	✓	✓	-
Ease of installation	✓	✓	-
Durable	✓	✓	✓
Low material waste	✓	✓	-
Minimal site disturbance	✓	-	-
Reduced risk for safety concerns	✓	-	-
Relocatable asset	✓	-	-

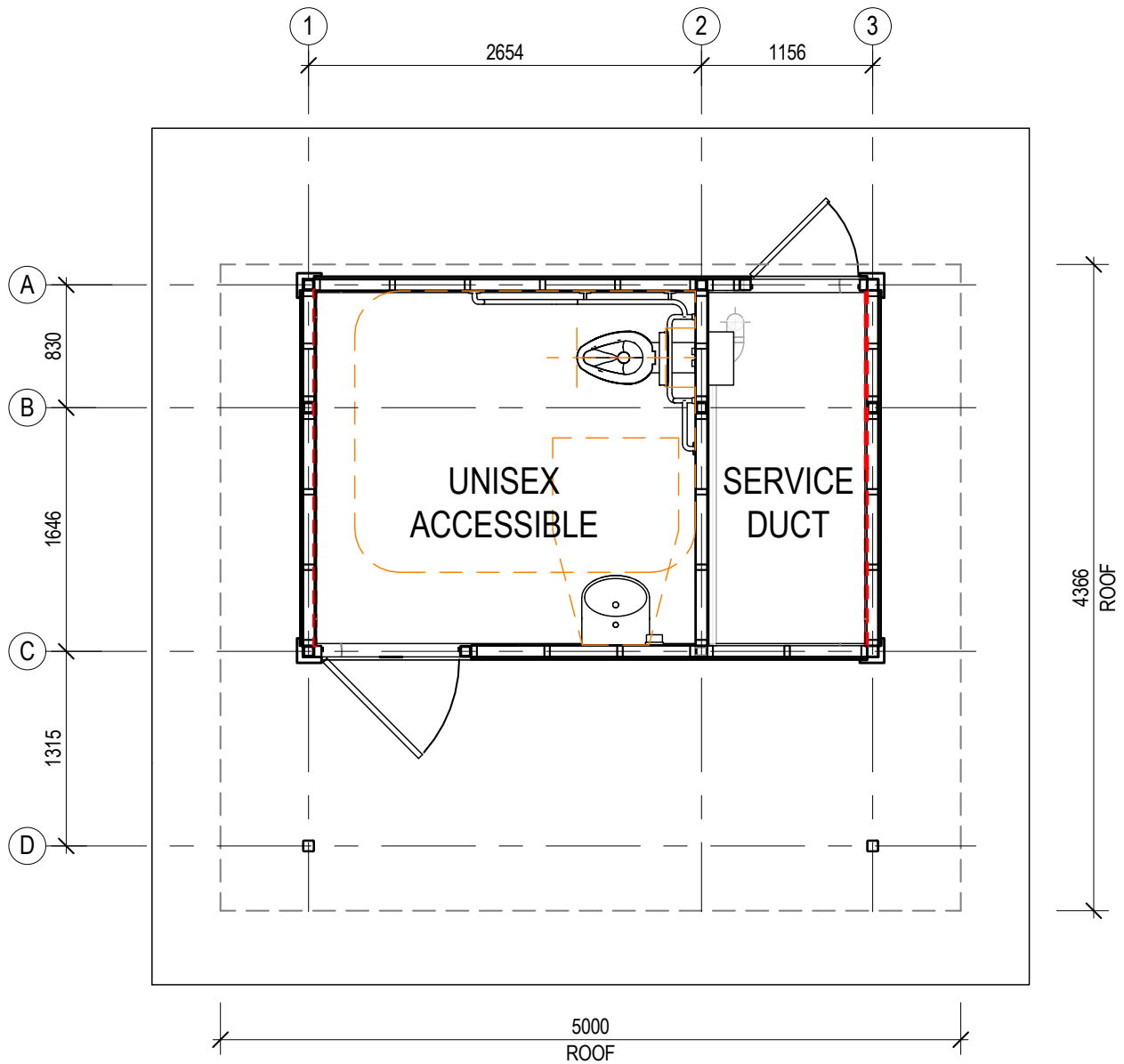


Eureka
1D (Premium)



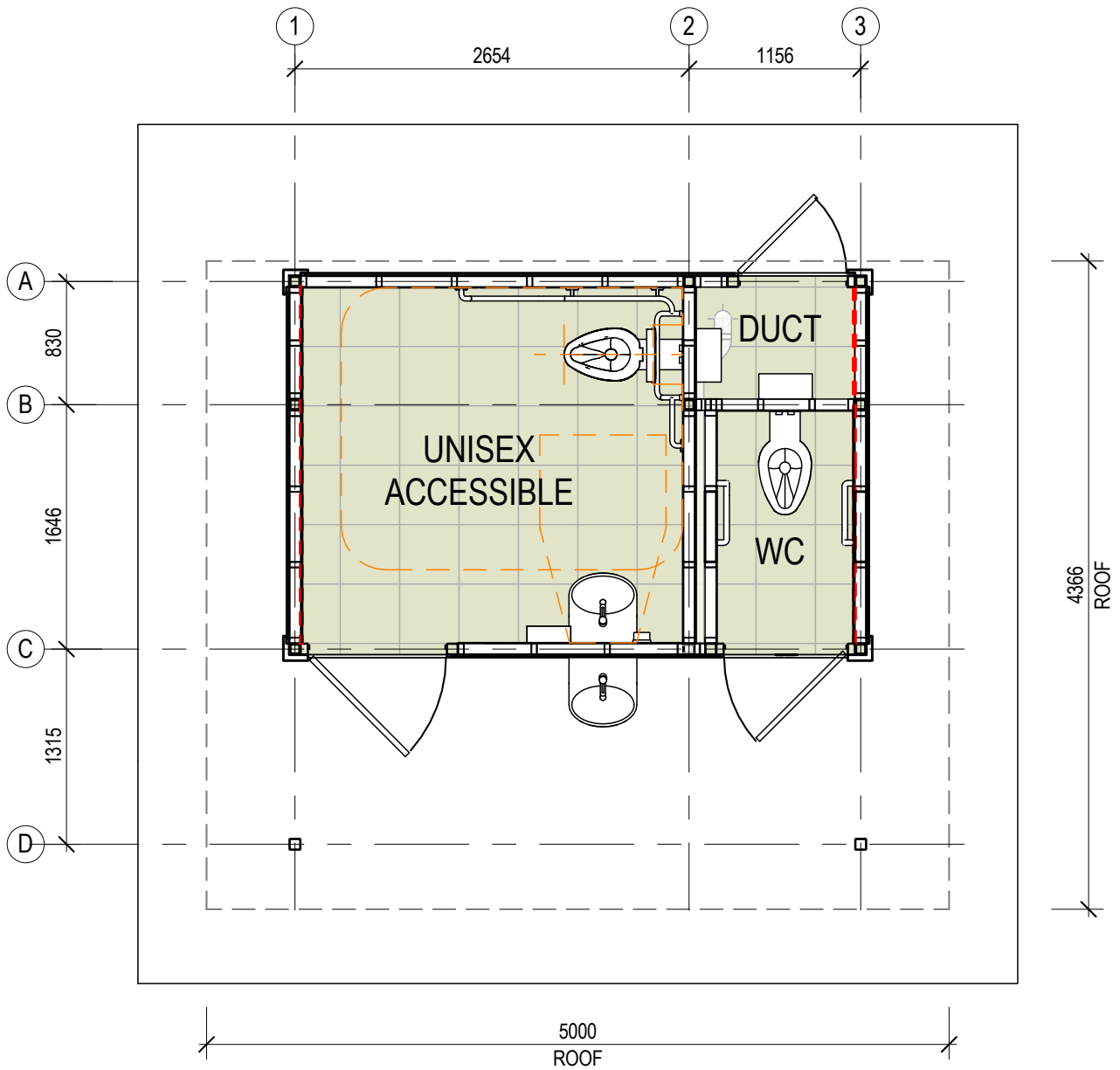


Eureka
1D (Standard)



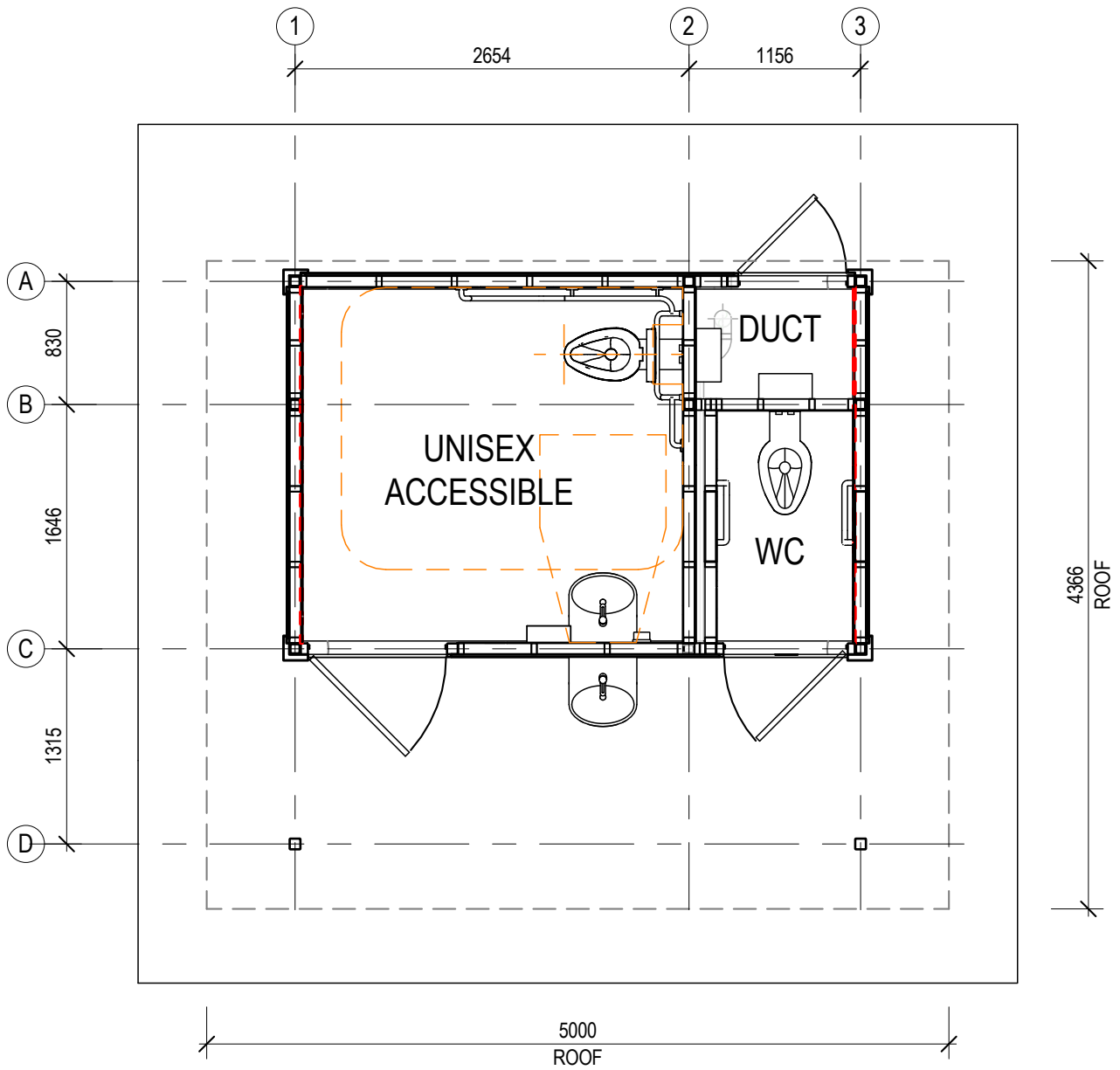


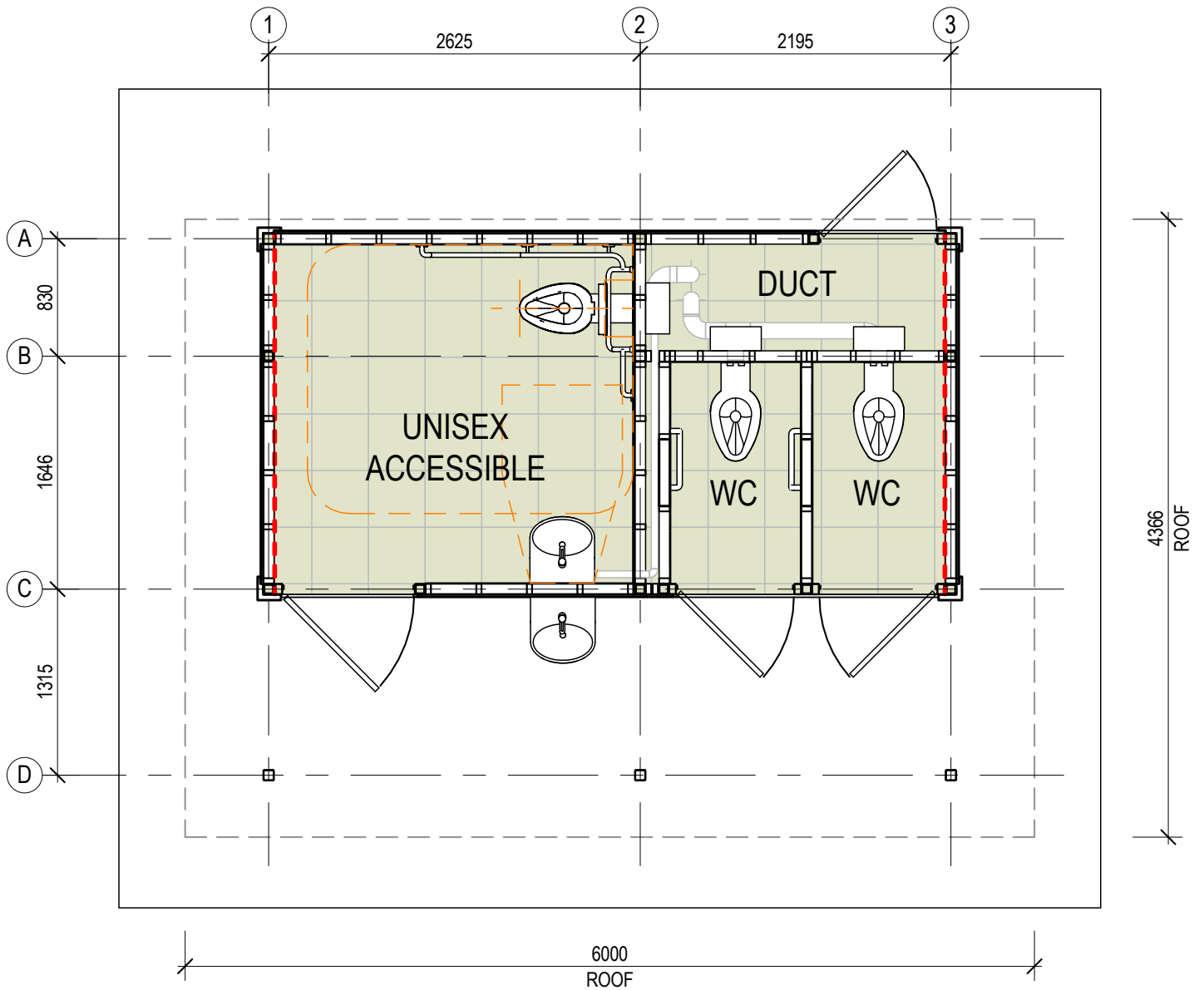
Eureka
1D1C (Premium)

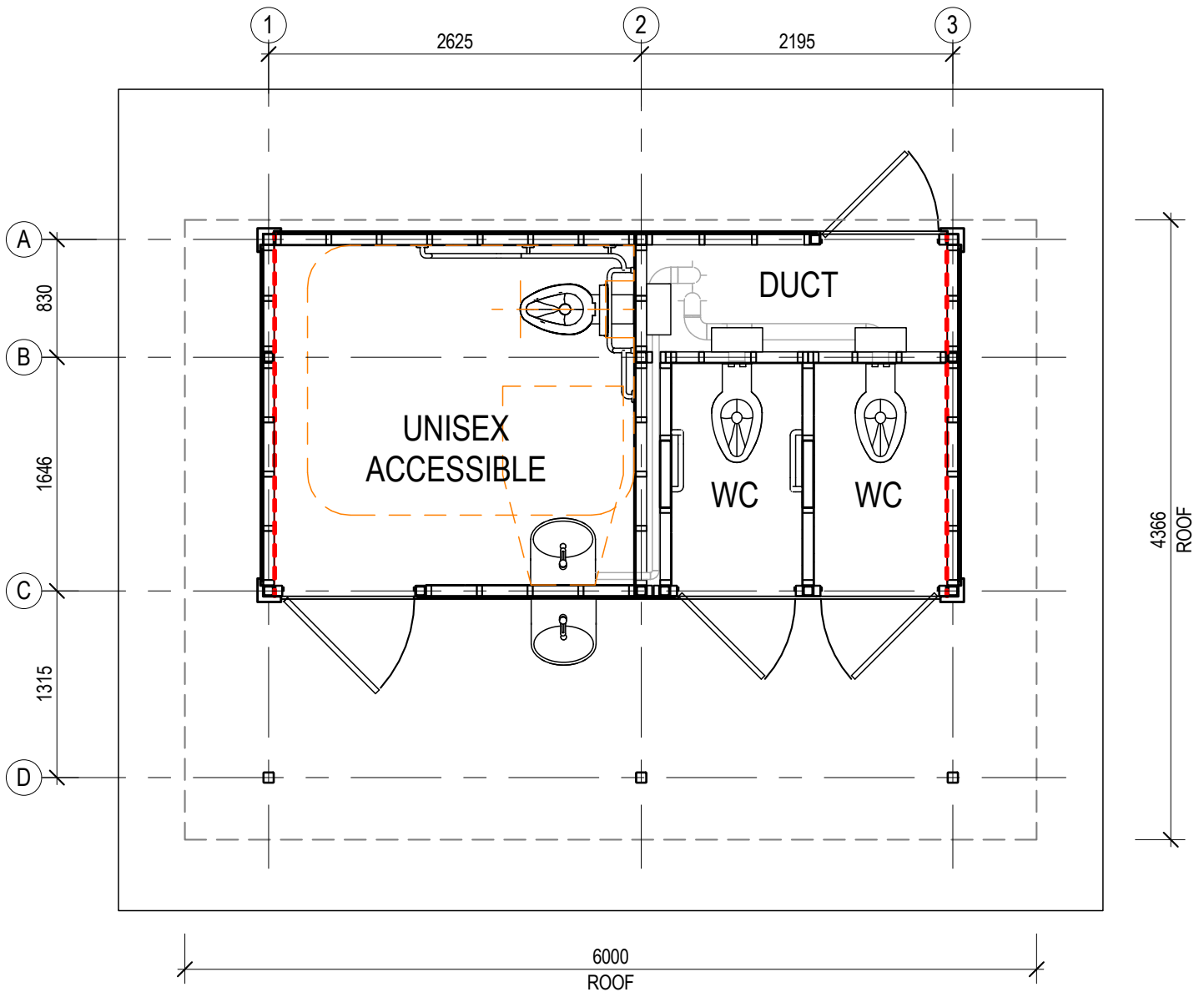




Eureka
1D1C (Standard)







Why Landmark Products?

When seeking to enrich your community through providing safe, environmentally-friendly public spaces and exceptional landscape design, there are six clear reasons why you're in safe hands with Landmark.



Long Life - Build Quality

At Landmark we understand the demands placed

on our products through public use, and the need to take a whole-of-life approach to these important community assets.

From design through to manufacturing, installation and ongoing maintenance, our products have been designed with visual appeal, durability and functionality front-of-mind. For this reason, we confidently offer a 10-year structural guarantee on all restrooms, extended to 20-year if installed by Landmark or a Landmark approved installer.



Customer Service

Landmark Products is committed to

ensuring prompt and effective service from first enquiry through to project completion. Our customer service staff and Project Consultants are expert in their field, and will guide you through the process, making this an easy and hassle-free experience.

It is our mission to ensure that the products you purchase are fit-for-purpose and all things have been considered and communicated effectively.



Widest Product Range

With Australia's largest range of

standard open space structures and park furniture, there are pre-designed and pre-engineered solutions available for almost every specification, delivering significant time savings, as well as reducing design, engineering and compliance costs.

If needed, all standard products can be modified to suit, or if you are looking for something unique – our highly experienced design team can deliver a complete custom solution.



Site Specific Solutions

Through years of experience Landmark

understands the challenges our diverse country can present in the delivery of open space projects.

By considering and analysing a multitude of factors – Landmark design, engineer and manufacture to suit individual site specifications, working with you to select the most appropriate design and materials for the application, location, environment and budget.



Installation & Project Management

Landmark Products is one

of the few companies in Australia that provide a full-service offering from – design, manufacturing, and installation. Thanks to this strategic advantage, Landmark Products' national installation and project management service is renowned nationally for its expertise.

From small installations through to complex projects, our experienced project managers and installation teams will work closely with you to ensure the project is delivered on time, to budget, and with an extended structural warranty of 20 years.



*Structural warranty on orders



With over 30 years' experience delivering public restrooms around Australia, Landmark is the ideal partner for design, manufacture and installation of modular restrooms.

Visit landmarkpro.com.au or call us 1300 768 230 for more info



Landmark
open space structures & solutions

MELBOURNE | SYDNEY | CANBERRA | BRISBANE | ADELAIDE | PERTH | DARWIN | AUCKLAND