



Public Restrooms



Australia's most comprehensive range

landmarkpro.com.au | 1300 768 230

 **Landmark**
open space structures & solutions

BRISBANE | SYDNEY | MELBOURNE | ADELAIDE | PERTH | AUCKLAND

About Landmark

Landmark Products offers a complete, professional open space structure and furniture service throughout Australia and abroad.

From design through to manufacturing and installation, Landmark Products can deliver a total project solution.

With over 30 years' experience, and a team of highly skilful, expert specialists in public use infrastructure, Landmark is committed to exceeding the expectations of our clients, whether for a relatively straightforward project such as to supply street furniture, or for complex, large scale, custom built urban projects.



Contents



5

Six reasons why Landmark is the preferred choice



6

On slab restrooms [Steel] CARETAKER RANGE



9

On slab restrooms [Timber] COASTAL RANGE



11

On slab restrooms [Timber] HERITAGE RANGE



12

On slab restrooms [Disability Focus] CHANGING PLACES



15

On slab restrooms [Compact] PARKLAND SERIES



17

Raised restrooms [Steel] CARNARVON RANGE



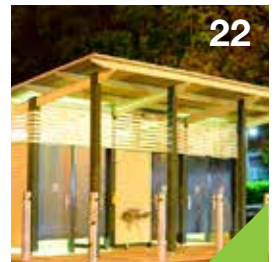
19

Raised restrooms [Timber] BEECHWORTH RANGE



21

Cubicles INCLUSIONS AND OPTIONS



22

Solar LED LIGHTING SYSTEM



23

Restroom Footings IN-GROUND, BOLT-DOWN OR BOLT-BELOW



24

Shelter Information FOOTINGS, ANTI-VANDAL SYSTEMS AND MORE



26

Colours and Finishes CHOICES



27

Design and installation CONCEPT TO FINISH



Why Landmark?

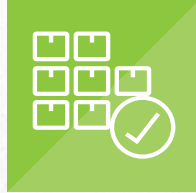


Long life - build quality

At Landmark we understand the demands placed on our products

through public use, and the need to take a whole-of-life approach to these important community assets.

From design through to manufacturing, installation and ongoing maintenance, our products have been designed with visual appeal, durability and functionality front-of-mind. For this reason, we confidently offer a 10-year structural guarantee on restrooms, extended to 20-year if installed by Landmark or a Landmark approved installer.



Widest product range

With Australia's largest range of standard open

space structures and park furniture, there are pre-designed and pre-engineered solutions available for almost every specification, delivering significant time savings, as well as reducing design, engineering and compliance costs.

If needed, all standard products can be modified to suit, or if you are looking for something unique our highly experienced design team can deliver a complete custom solution.



Site specific solutions

Through years of experience Landmark understands the

challenges our diverse country can present in the delivery of open space projects.

By considering and analysing a multitude of factors, Landmark design, engineer and manufacture each product to suit individual site specifications, working with you to select the most appropriate design and materials for the application, location, environment and budget.



Customer service

Landmark Products is committed to ensuring prompt and effective

service from first enquiry through to project completion. Our customer service staff and Project Consultants are expert in their field, and will guide you through the process, making this an easy and hassle-free experience.

It is our mission to ensure that the products you purchase are fit-for-purpose and all things have been considered and communicated effectively.



Installation and project management

Landmark Products is one of the few

companies in Australia that provide a full-service offering from – design, manufacturing, and installation. Thanks to this strategic advantage, Landmark Products' national installation and project management service is renowned nationally for its expertise.

From small installations through to complex projects our experienced project managers and installation teams will work closely with you to ensure the project is delivered on time, to budget, and with an extended structural warranty of 20 years.



Kit-form engineered

Landmark structures arrive flat-packed, ready-to-assemble, with

no on-site fabrication needed. Step-by-step assembly instructions and appropriate documentation are included.

The benefits of kit-form are numerous. With all components pre-cut and pre-drilled, there is less noise, less waste, less disturbance to the environment. Because erection times are so much quicker than traditional construction, there is significantly less on-site disruption. For remote or difficult sites, Landmark's factory-built structures are the sensible solution.

- **Please note:** All plans presented in this brochure are indicative only. For more detailed information, contact your local Project Consultant.





Public Restrooms



Modern, strong and durable



On-slab steel

CARETAKER SERIES

A robust, low maintenance all-steel restroom, offering options in roofing style, and a modern aesthetic complementary to any park or urban space.

| Materials | Finishes | Fixings |
|---|--|--|
| <ul style="list-style-type: none"> Steel posts with steel roof frame Colorbond® XRW Grade steel internal and external wall sheeting and roofing Polycarbonate roof sheeting (natural lighting) Timber ventilation screens Steel clad doors | <ul style="list-style-type: none"> Hot-dipped galvanised posts and roof frames <p>or</p> <ul style="list-style-type: none"> Hot-dipped galvanised and powder-coated steel posts and roof frame | <ul style="list-style-type: none"> Bolt-below slab posts Stainless steel anti-vandal fastening system Door closer Door indicator bolts Stainless steel push pull plates Access signage |

| Options | | |
|--|---|--|
| <ul style="list-style-type: none"> Internal/External wall sheeting options (see page 24) Colorbond® Ultra Grade internal and external wall sheeting and roofing Structural rating upgrade beyond N3 (W41) Standard size variations | <ul style="list-style-type: none"> Two-pack epoxy paint for steel Powder-coated aluminium ventilation and privacy screens | <ul style="list-style-type: none"> Urinals Shower and change room facilities Security options to restrict usage times |

For cubicle standard inclusions and options see page 21.

ROOF OPTIONS



K9500 Caretaker Series



K9500 Caretaker Series

Note: All Caretaker Series restrooms come standard with a service duct, allowing protection and easy maintenance of all toilet systems.

COMPLIANCE

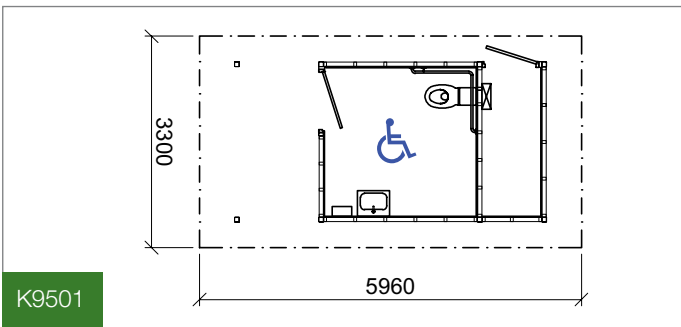
- Supplied with professional building application drawings
- Galvanised steel as per AS/NZS 4680:2006
- AS1428.1 Mobility and Access compliant



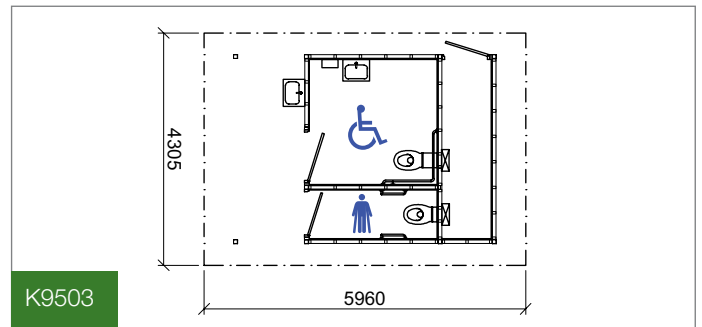


K9500 Caretaker Series

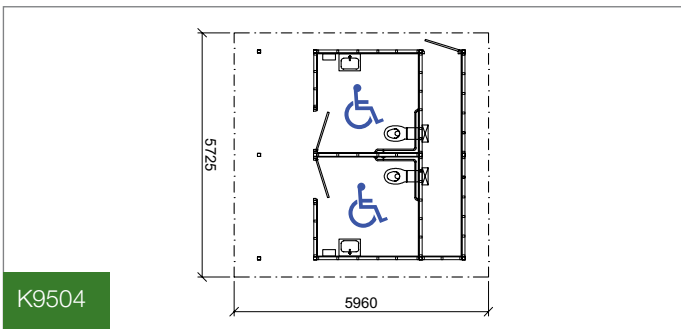
Size Options:



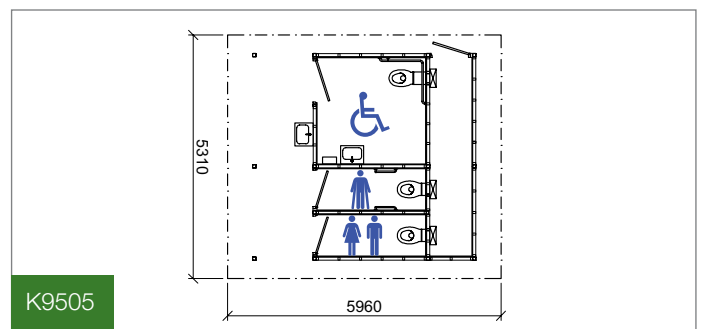
K9501



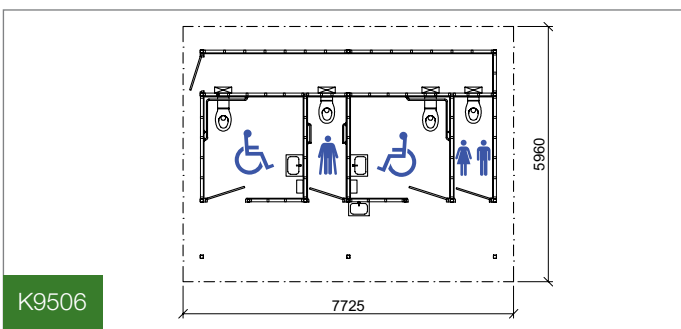
K9503



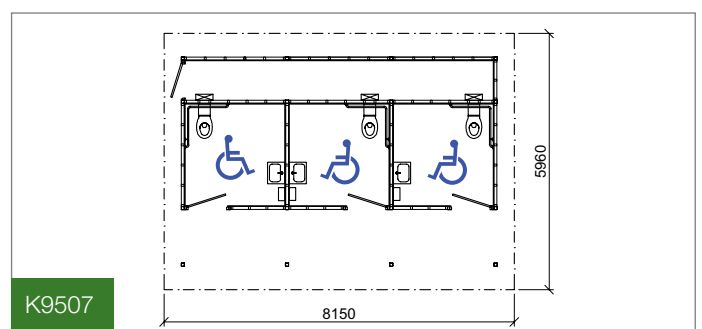
K9504



K9505

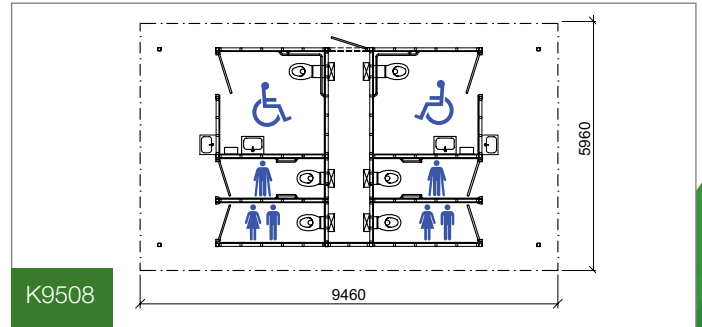


K9506



K9507

CUSTOM SOLUTIONS AVAILABLE



K9508



Public Restrooms



Naturally appealing



On-slab timber

COASTAL SERIES

The natural beauty of timber coupled with contemporary design complements any park or urban space, and is an ideal solution for coastal conditions.

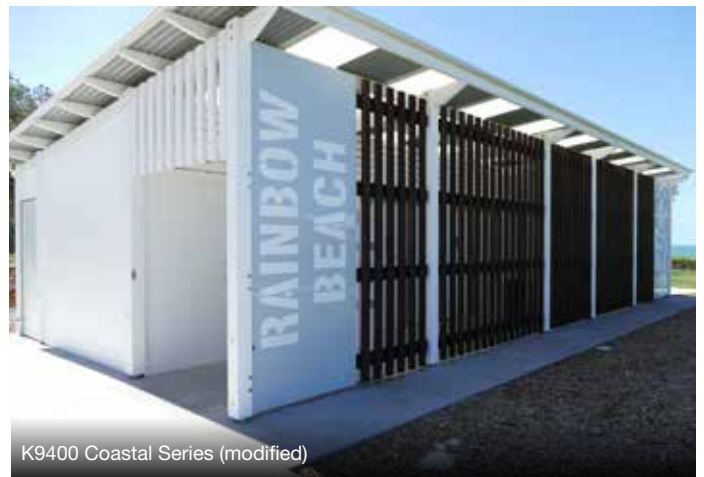
| Materials | Finishes | Fixings |
|---|---|--|
| <ul style="list-style-type: none"> Pine posts with pine roof Colorbond® XRW Grade steel internal and external wall sheeting and roofing Polycarbonate roof sheeting (natural lighting) Timber ventilation screens Steel clad doors | <ul style="list-style-type: none"> Stain colour for pine posts and roof frame | <ul style="list-style-type: none"> In-ground posts Stainless steel anti-vandal fastening system Door closer Door indicator bolts Stainless steel push pull plates Access signage |
| Options | | |
| <ul style="list-style-type: none"> Hardwood posts with pine roof Internal/external wall sheeting (page 24) Colorbond® Ultra Grade internal/external wall sheeting and roofing Structural rating upgrade beyond N3 (W41) Standard size variations | <ul style="list-style-type: none"> Stain colour for hardwood posts and roof frame Paint colour for pine posts and roof frame Powder-coated aluminium ventilation and privacy screens | <ul style="list-style-type: none"> Urinals Shower and change room facilities Security options to restrict usage times |

For cubicle standard inclusions and options see page 21.

ROOF OPTIONS



K9400 Coastal Series



K9400 Coastal Series (modified)

Note: All Coastal Series restrooms come standard with a service duct, allowing protection and easy maintenance of all toilet systems.

COMPLIANCE

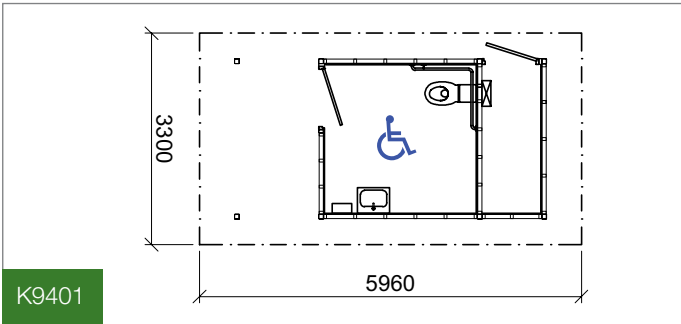
- Supplied with professional building application drawings
- Galvanised steel as per AS/NZS 4680:2006
- AS1428.1 Mobility and Access compliant



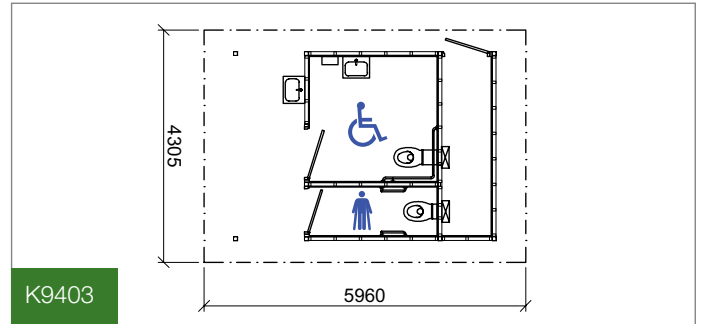


K9400 Coastal Series

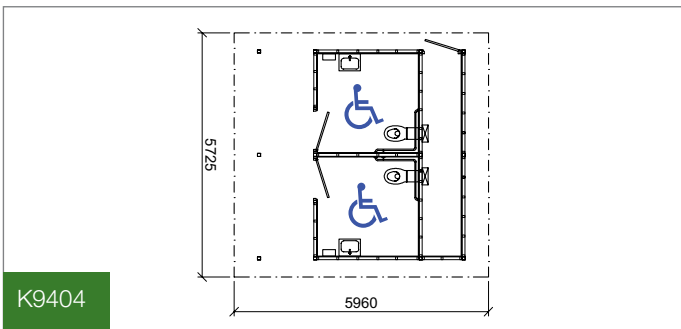
Size Options:



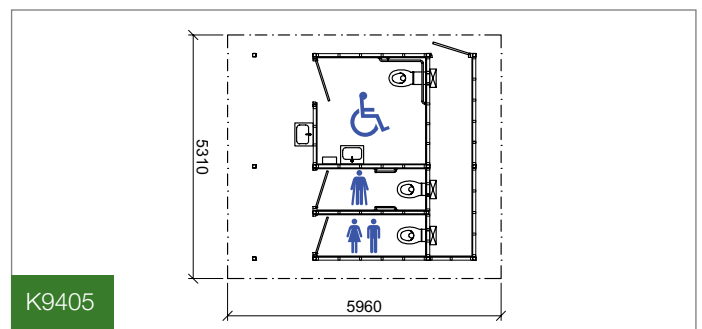
K9401



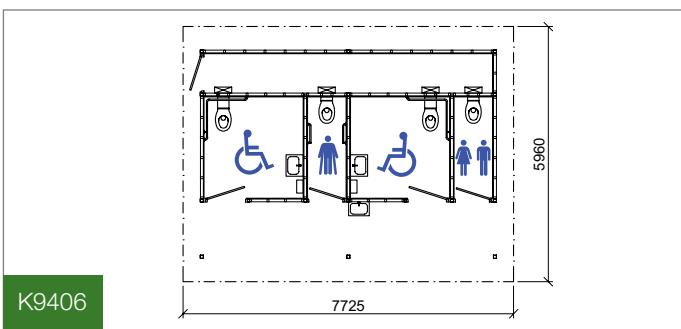
K9403



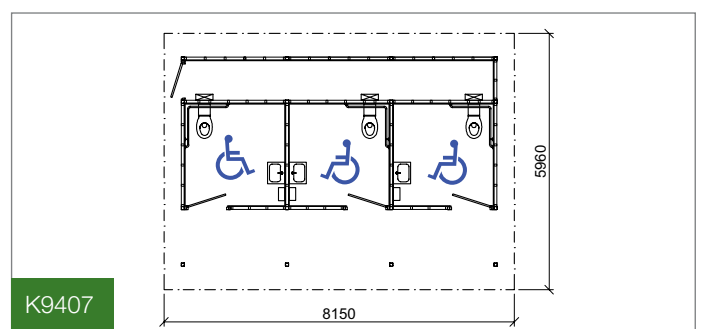
K9404



K9405



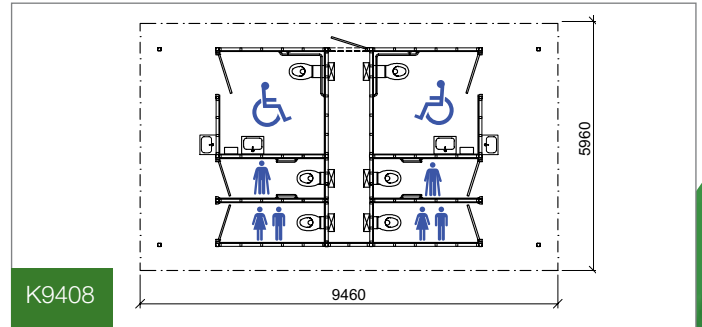
K9406



K9407



CUSTOM SOLUTIONS AVAILABLE



K9408



Public Restrooms



Traditional look. Modern finish.



On-slab traditional timber restrooms

HERITAGE SERIES

A traditional restroom design for projects that need a true heritage focus, made with durable and low maintenance materials.

| Materials | Finishes | Fixings |
|---|---|--|
| <ul style="list-style-type: none"> Steel posts with pine roof frame Colorbond® XRW Grade steel internal wall sheeting and roofing Pine external exposed feature wall framing Polycarbonate roof sheeting (natural lighting) Steel clad doors | <ul style="list-style-type: none"> Hot-dipped galvanised posts or Hot-dipped galvanised and powder-coated steel posts Pine stained timber roof frame and decorative feature wall framing | <ul style="list-style-type: none"> Bolt-below slab posts Stainless steel anti-vandal fastening system Door closer Door indicator bolts Stainless steel push pull plates Access signage |
| Options | | |
| <ul style="list-style-type: none"> Colorbond® Ultra Grade steel internal wall sheeting and roofing Structural rating upgrade beyond N3 (W41) Standard size variations | <ul style="list-style-type: none"> Paint colour for pine posts and roof frame | <ul style="list-style-type: none"> Urinals Shower and change room facilities Security options to restrict usage times |

For cubicle standard inclusions and options see page 21.

ROOF OPTION



K9300 Heritage Series



K9300 Heritage Series

Note: All Heritage Series restrooms come standard with a service duct, allowing protection and easy maintenance of all toilet systems.



Ask us about our installation service



COMPLIANCE

- Supplied with professional building application drawings
- Galvanised steel as per AS/NZS 4680:2006
- AS1428.1 Mobility and Access compliant

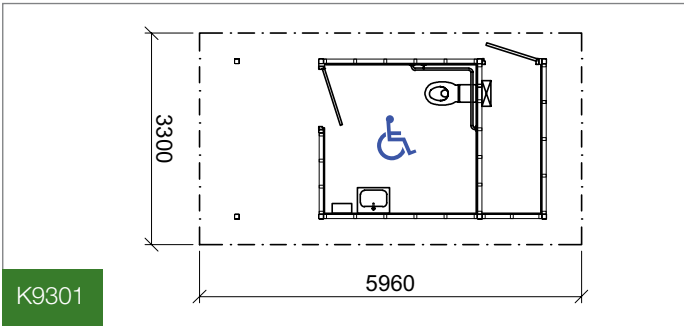


K9300 Heritage Series

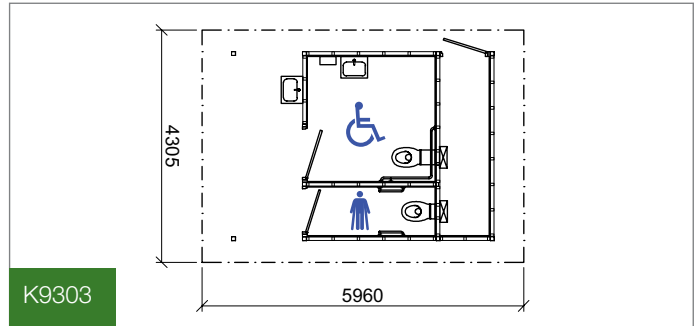


K9300 Heritage Series

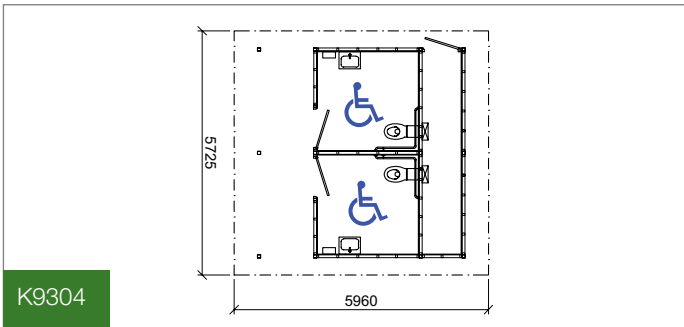
Size Options:



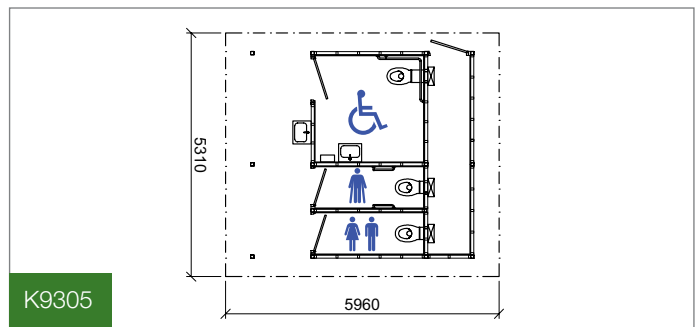
K9301



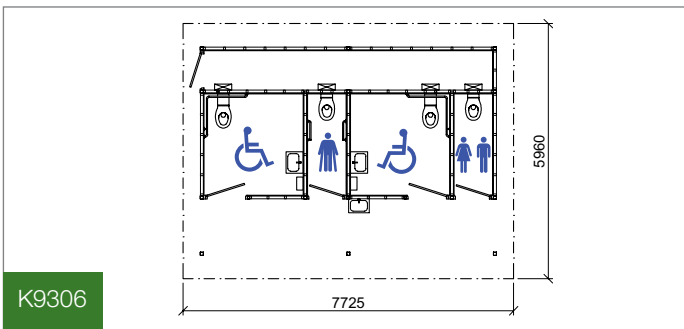
K9303



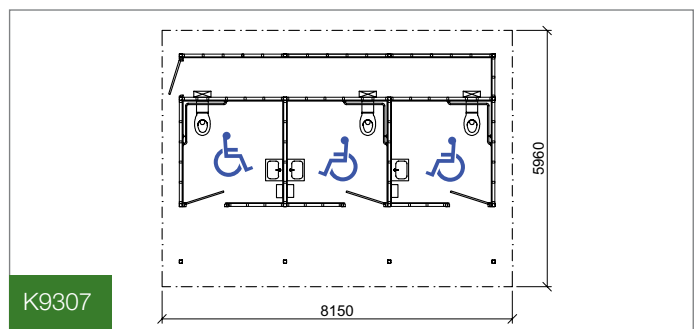
K9304



K9305



K9306



K9307

CUSTOM SOLUTIONS AVAILABLE





Public Restrooms



Freedom for all.

On-slab steel restrooms

CHANGING PLACES

Specialised public restrooms that allow greater freedom for people with severe and profound disabilities and their carers.



ROOF OPTIONS



What is Changing Places?



Changing Places is an international project which advocates for public toilets with adult-sized change tables and automated hoists in major public spaces, to meet the needs of people with severe and profound disabilities.

Landmark Products specialises in two standard Changing Places Restroom floor plans – Type 1A (no shower) and Type 2 (with shower), but can also create custom, site specific solutions.



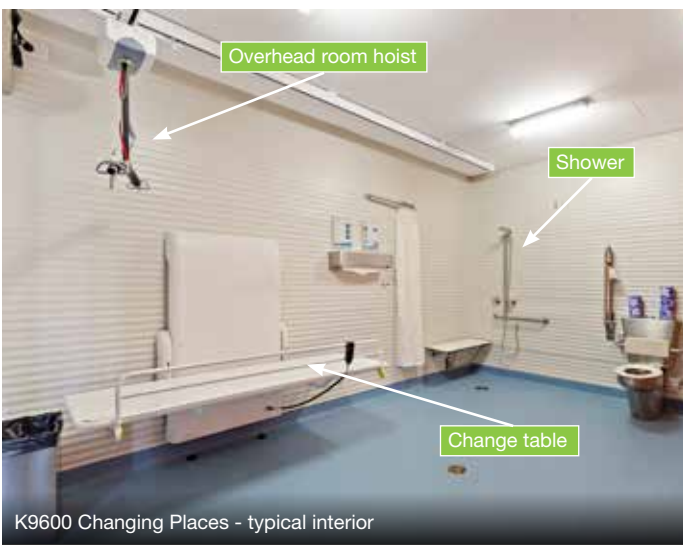
Ask us about our installation service



| Materials | Finishes | Fixings |
|--|--|---|
| <ul style="list-style-type: none"> Steel posts with steel roof frame Colorbond® XRW Grade steel external wall sheeting and roofing Maxirib horizontal sheeting for internal walls Polycarbonate roof sheeting (natural lighting) Steel clad doors | <ul style="list-style-type: none"> Powdercoated steel posts and roof frame | <ul style="list-style-type: none"> Bolt-below slab posts Stainless steel anti-vandal fastening system Stainless steel push pull plates Access signage |
| Options | | |
| <ul style="list-style-type: none"> Option of Coated FC panels or Modern ACM for external walls ACM for internal walls Colorbond® Ultra Grade steel internal and external wall sheeting and roofing Structural rating upgrade beyond N3 (W41) Standard size variations | <ul style="list-style-type: none"> Two-pack epoxy paint or thermoplastic coatings for steel Baluster, screening and modesty panels | <ul style="list-style-type: none"> Urinals Shower and change room facilities |



K9600 Changing Places - Bibra Lakes, Western Australia



K9600 Changing Places - typical interior

Standard Changing Places inclusions

- Overhead automated hoist (with rechargeable option)
- Accessible WC including backrest and lift-up grab rails
- Two 800mm long horizontal grab rails
- Automatically or remote control operated adjustable height change table 1800mm long with safety rail
- Sanitising wipe dispenser with shelf over
- Integrated wash hand basin
- Hand dryer
- Rubbish bin
- Retractable privacy curtain, wall mounted
- Soap dispenser
- Clothes hook
- Large sling hook
- Automatic door control
- Accessible shower with instant hot water heater (with Type 2 only)
- Commercial vinyl floor

Overhead room hoist

The recommended ceiling hoist uses the XY system or gantry, including two parallel fixed rails and a perpendicular moving traverse rail, providing coverage over the entire room. Safe working load is 180 kg (test load up to 300kg).

Change table

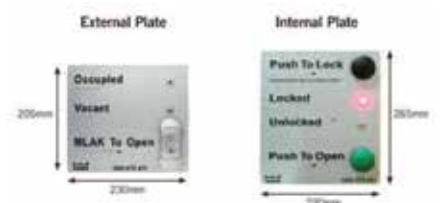
Remotely controlled by low voltage, and capable of managing 180 kg, the change table is freestanding with two safety sides. There is also a sanitising wipe dispenser.

Shower

Where included (in Type 2 or custom design), the shower and shower seat installation is Changing Places compliant. A handheld shower head with a 1500mm flexible hose is provided.

Automatic doors

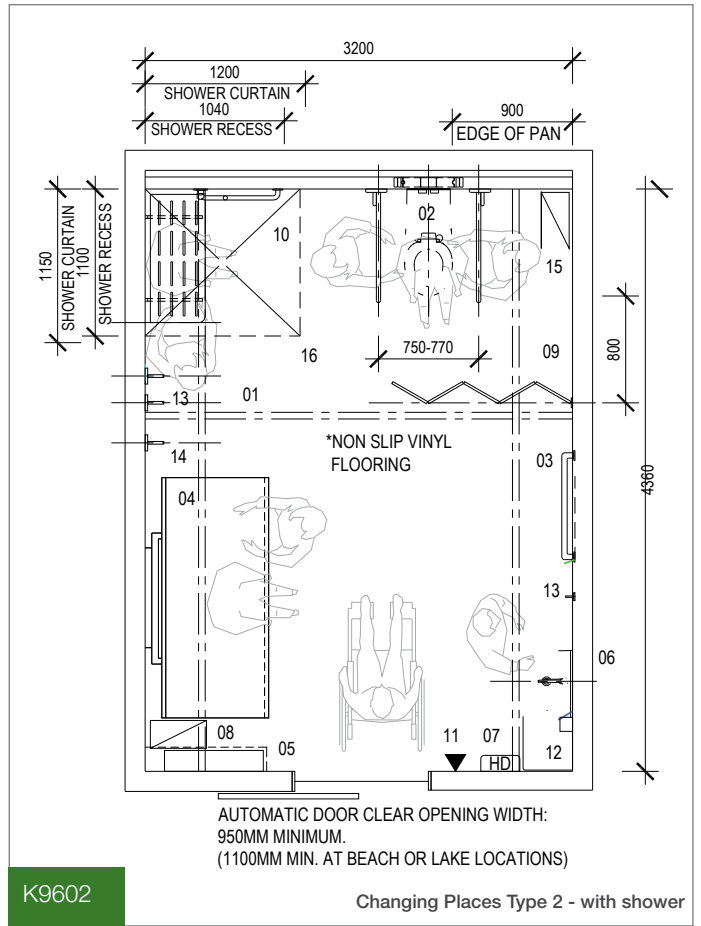
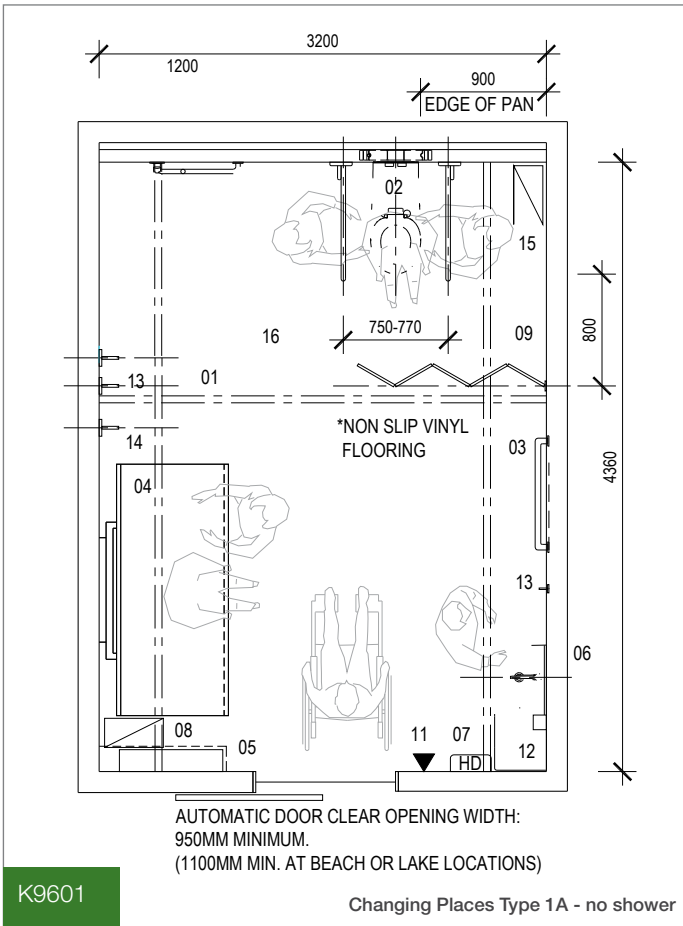
The automatic doors recommended by Changing Places allow for one button entry, one button locking once inside, occupancy lighting and feature braille tactile signage. Highest security is retained through the national MLAK (Master Locksmith Access Key).





- COMPLIANCE**
- Blue Accreditation Level: Facilities accredited as Blue Level Changing Places are those built according to one of three Changing Places layouts or based on alternative or modified plans which have been approved by the Changing Places technical advisory team prior to construction.
 - Supplied with professional building application drawings.
 - Galvanised steel as per AS/NZS 4680:2006
 - AS1428.1 Mobility and Access compliant

Design Options:



LEGEND

- 01 ROOM COVERAGE HOIST
- 02 ACCESSIBLE WC INCL BACKREST AND DROP DOWN CHANING RAILS
- 03 TWO 800MM LONG HORIZONTAL CHANGING RAILS AT 800MM AND 1000MM ABOVE FLOOR LEVEL
- 04 ADJUSTABLE HEIGHT CHANGE TABLE, 1800MM LONG WITH SIDE SAFETY RAIL
- 05 DISPOSABLE CHANGE TABLE COVER DISPENSER WITH SHELF OVE (OPTION AVAILABLE, REFER SPECIFICATION)
- 06 HAND WASH BASIN WITH INTEGRATED SHELF
- 07 HAND DRYER
- 08 INCONTINENCE PAD DISPOSAL BIN
- 09 RETRACTABLE PRIVACY SCREEN 1500MM LONG
- 10 ACCESSIBLE SHOWER
- 11 AUTOMATIC DOOR CONTROL
- 12 SOAP DISPENSER
- 13 CLOTHES HOOKS
- 14 LARGE SLING HOOK
- 15 SANITARY NAPKIN DISPOSAL BIN
- 16 TELESCOPIC SHOWER CURTAINS
- ▼ AUTOMATIC DOOR CONTROL





Public Restrooms



Fit for purpose.



On-slab compact restrooms

PARKLAND SERIES

Simple, all-steel designs for small spaces and maximum utility.

| Materials | Finishes | Fixings |
|--|--|--|
| <ul style="list-style-type: none"> Hot-dipped galvanised steel posts with steel roof frame Colorbond® XRW Grade steel internal and external wall sheeting and roofing Polycarbonate roof sheeting (natural lighting) (K9703 only) Steel clad doors | <ul style="list-style-type: none"> Hot-dipped galvanised or powdercoated steel posts and roof frame | <ul style="list-style-type: none"> Bolt-below slab posts Stainless steel anti-vandal fastening system Door closer Door indicator bolts Stainless steel push pull plates Access signage |
| Options | | |
| <ul style="list-style-type: none"> Treated plywood internal wall sheeting Colorbond® Ultra Grade steel internal and external wall sheeting and roofing Structural rating upgrade beyond N3 (W41) Standard size variations | <ul style="list-style-type: none"> Two-pack epoxy paint for steel | <ul style="list-style-type: none"> Urinals Shower and change room facilities |

ROOF
OPTIONS



K9700 Parkland Series



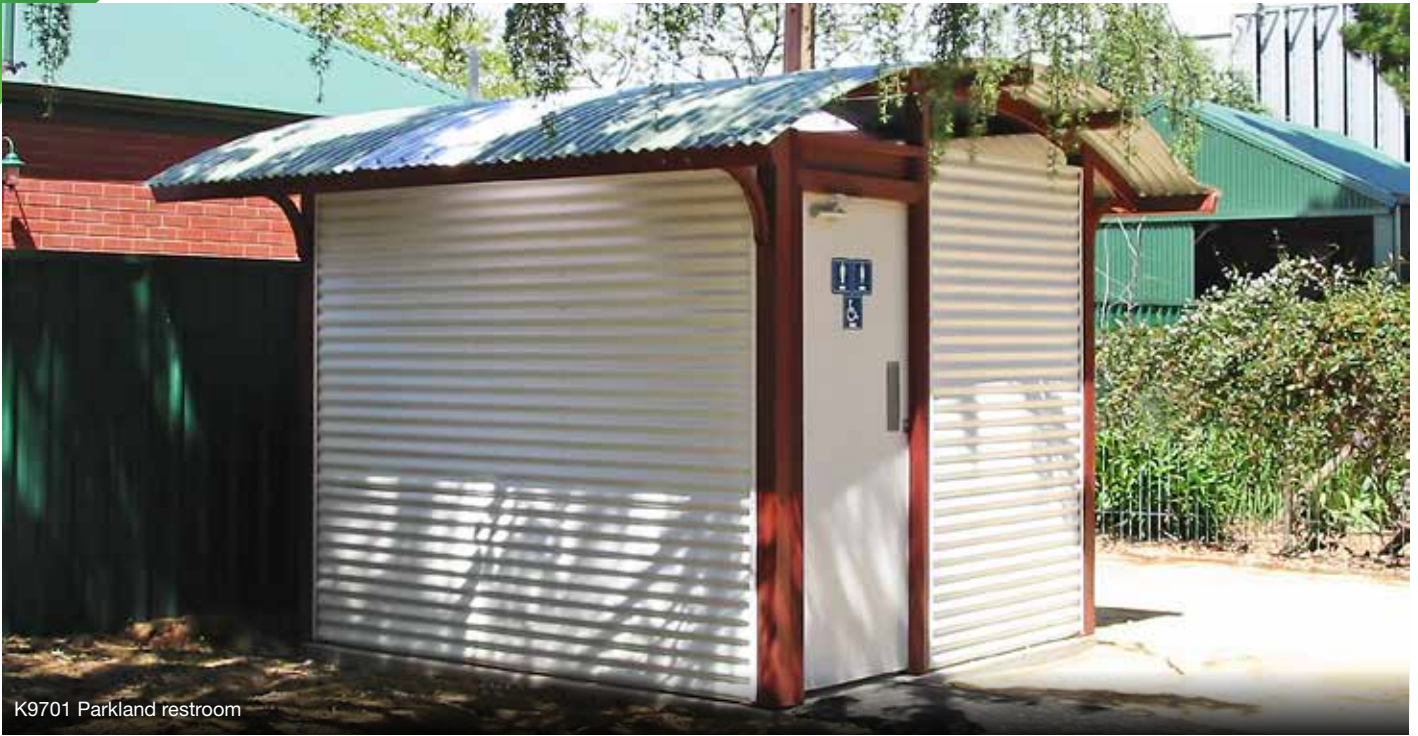
K9700 Parkland Series

For cubicle standard inclusions and options see page 21.



COMPLIANCE

- Supplied with professional building application drawings
- Galvanised steel as per AS/NZS 4680:2006
- AS1428.1 Mobility and Access compliant

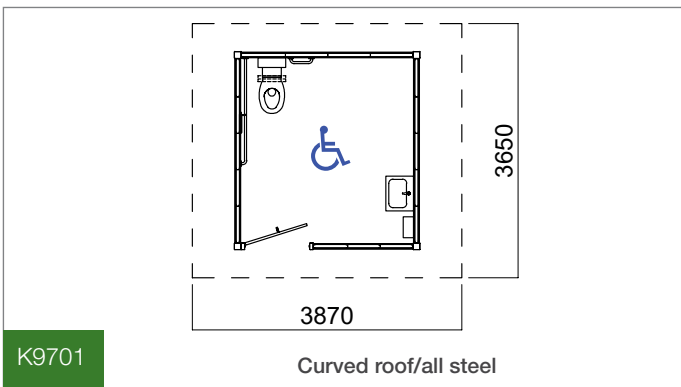


K9701 Parkland restroom

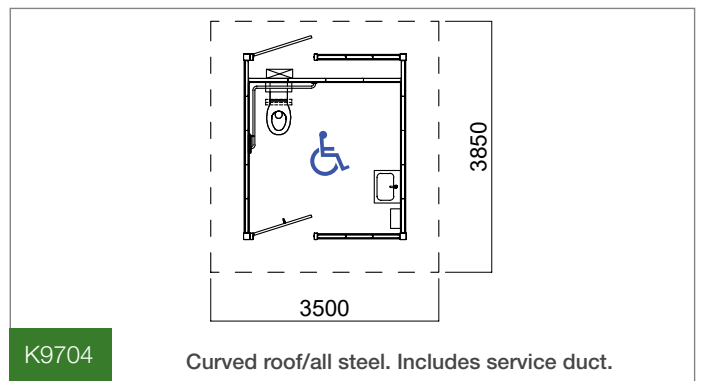
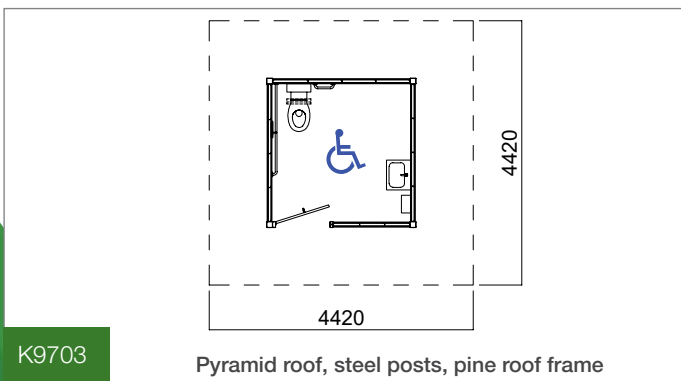
CUSTOM SOLUTIONS AVAILABLE



Size Options:



K9701 Parkland restroom





Public Restrooms



Robust. Stand-alone.



Raised steel restroom

CARNARVON SERIES

Designed for sloping or rugged sites, that may require a water treatment system, the steel Carnarvon Series is ideal for those out-of-the-way locations.

| Materials | Finishes | Fixings |
|--|---|---|
| <ul style="list-style-type: none"> Hot-dipped galvanised steel posts with steel roof frame Colorbond® XRW Grade steel internal and external wall sheeting/roofing Polycarbonate roof sheeting (natural lighting) Compressed Fibre Cement (CFC) cubicle flooring Hardwood decking for outer floors and ramps 4.5 disabled access ramp Steel clad doors | <ul style="list-style-type: none"> Powdercoated steel posts and roof frame | <ul style="list-style-type: none"> Inground posts Stainless steel anti-vandal fastening system Door closer Door indicator bolts Stainless steel push pull plates Access signage |

| Options | | |
|---|---|---|
| <ul style="list-style-type: none"> Treated plywood internal wall sheeting Colorbond® Ultra Grade steel internal and external wall sheeting and roofing Structural rating upgrade beyond N3 (W41) Standard size variations | <ul style="list-style-type: none"> Stain colour for hardwood decking Paint colour for internal floors Two-pack epoxy paint for steel | <ul style="list-style-type: none"> Stairs and access ramp modules Below deck walls/grates and cladding Waste treatment systems and water tanks Urinals Shower and change room facilities |

For cubicle standard inclusions and options see page 21.

ROOF OPTIONS



K9100 Carnarvon Series



K9100 Carnarvon Series

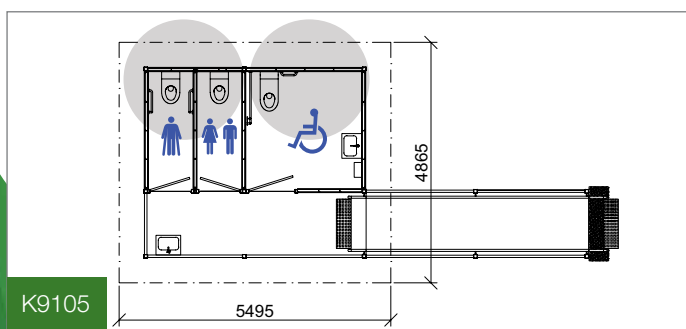
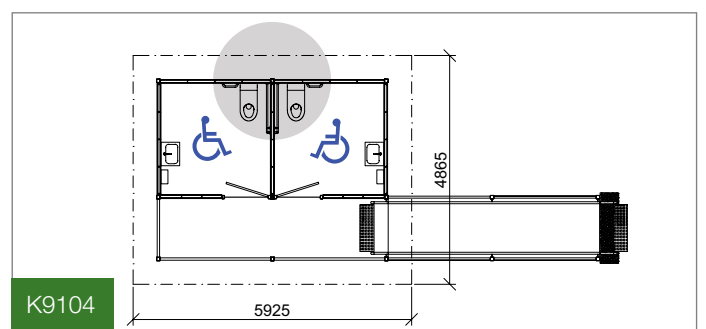
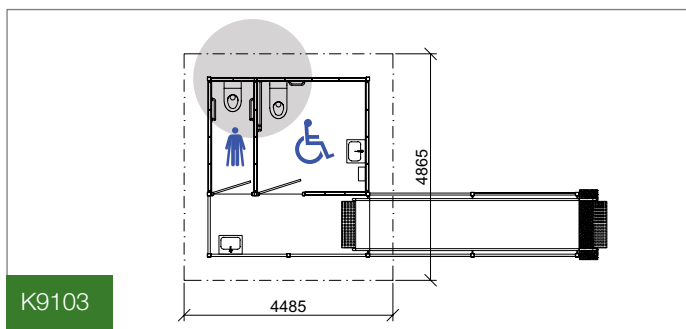
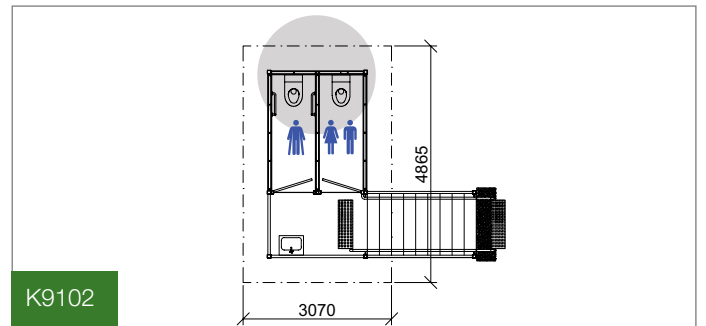
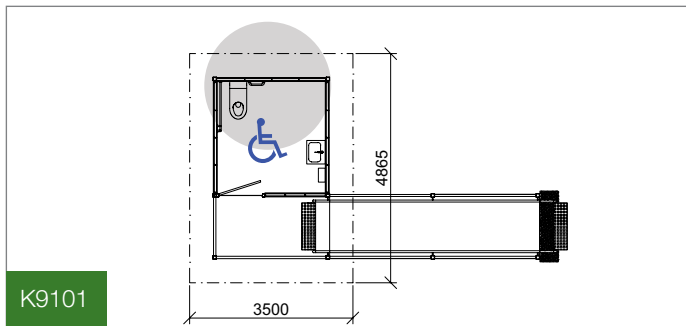
COMPLIANCE

- Supplied with professional building application drawings
- Galvanised steel as per AS/NZS 4680:2006
- AS1428.1 Mobility and Access compliant





Size Options:



CUSTOM SOLUTIONS AVAILABLE



Public Restrooms



Naturally independent.



Raised timber restroom

BEECHWORTH SERIES

Designed for sloping or rugged sites, that may require an alternate waste treatment system, the raised timber Beechworth series is ideal for coastal environments.

| Materials | Finishes | Fixings |
|--|--|---|
| <ul style="list-style-type: none"> Pine posts with pine roof Colorbond® XRW Grade steel internal and external wall sheeting and roofing Polycarbonate roof sheeting (natural lighting) Compressed Fibre Cement (CFC) cubicle flooring 4.5m disabled access ramp Steel clad doors | <ul style="list-style-type: none"> Stain colour for pine posts and roof frame | <ul style="list-style-type: none"> Inground posts Stainless steel anti-vandal fastening system Door closer Door indicator bolts Stainless steel push pull plates Access signage |
| Options | | |
| <ul style="list-style-type: none"> Hardwood posts with pine roof Treated plywood internal wall sheeting Colorbond® Ultra Grade steel internal and external wall sheeting and roofing Structural rating upgrade beyond N3 (W41) Standard size variations | <ul style="list-style-type: none"> Stain colour for hardwood posts and roof frame Paint colour for pine posts and roof frame | <ul style="list-style-type: none"> Stairs and access ramp modules Below deck walls/grates and cladding Urinals Shower and change room facilities |

For cubicle standard inclusions and options see page 21.

ROOF OPTIONS



K9200 Beechworth Series



K9200 Beechworth Series

- COMPLIANCE**
- Supplied with professional building application drawings
 - Galvanised steel as per AS/NZS 4680:2006
 - AS1428.1 Mobility and Access compliant



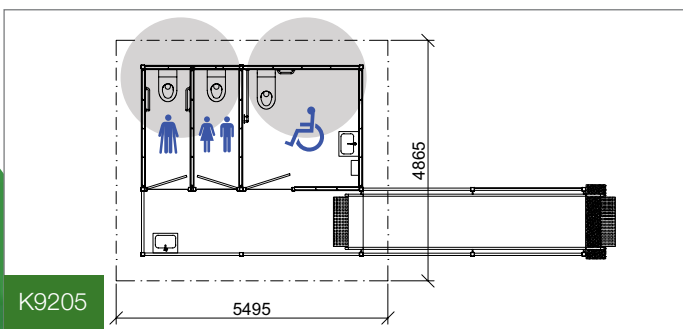
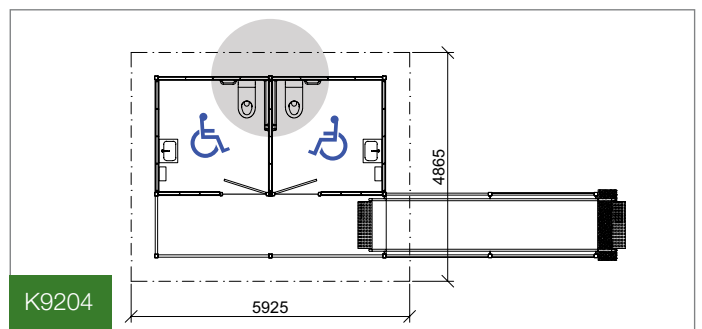
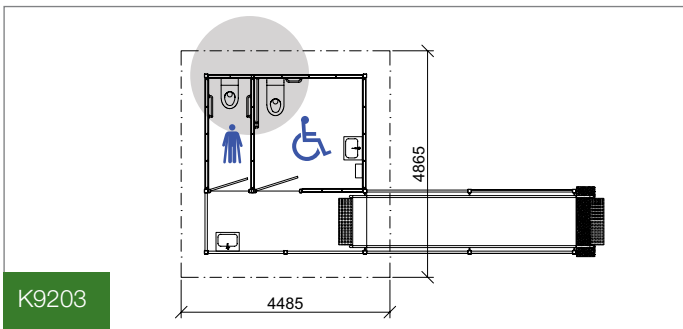
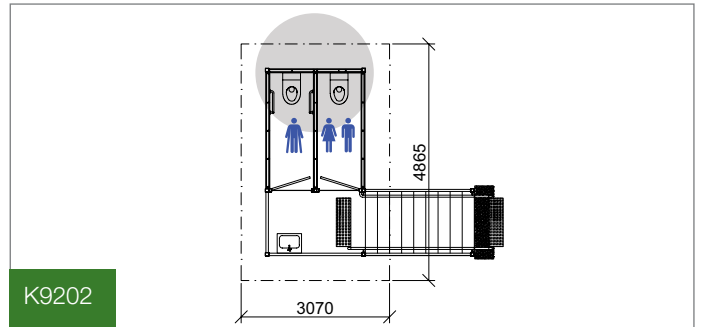
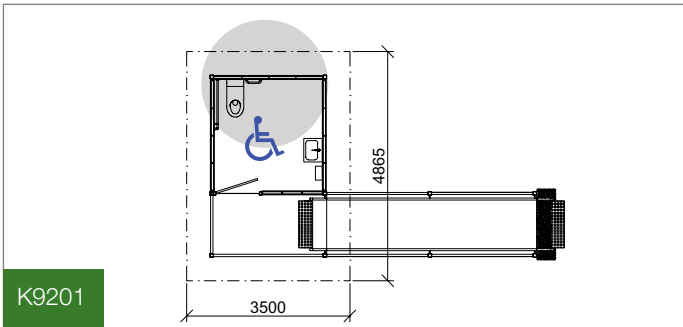
Ask us about our installation service





K9201 Beechworth Series

Size Options:



CUSTOM SOLUTIONS AVAILABLE



Public Restrooms



Cubicle fitout

Standard and optional items

Match the cubicle up with the icon shown on the restroom floor plans throughout this brochure.

There are three standard cubicles available for Landmark restrooms (except Changing Places).

To meet standards, prescribed combinations of cubicles must be in the one structure. For example, if there is only one cubicle, it must be a “disabled cubicle”.

On this page are the standard and optional inclusions in each of the cubicle types (as indicated on each floorplan). Size standards can also apply to each type.

Disabled Cubicle



Standard fitout items

- GR304 Stainless steel disabled pan with back rest, disabled handrails, plastic cistern and stainless steel pan flush button flashing.
- Standard Landmark toilet roll holder
- Chrome plated coat and hat hook with rubber cap.
- GR316 Stainless steel shelf.
- GR304 Stainless steel basin with a self-closing lever action cold water tap (no shroud as standard – see option).
- Signage – AS1428.1 Compliant

Optional fitout items

- Vertical polyethylene baby change table.
- GR 316 Stainless steel mirror
- Adult change table (requires larger cubicle/building footprint)
- Basin shroud (Colorbond or stainless steel)
- Disabled complaint shower (requires larger cubicle/building footprint)
 - Hand held shower including an adjustment rail with mixer tap and floor waste.
 - Fold down 960mm shower seat with a stainless steel frame and a plastic seat.

Ambulant Cubicle



Standard fitout items

- GR304 Stainless steel ambulant pan with ambulant handrails, plastic cistern and stainless steel pan flush button flashing.
- Standard Landmark toilet roll holder
- Chrome plated coat and hat hook with rubber cap.
- GR304 Stainless steel basin with a spring closing cam or button action cold water tap (no shroud as standard – see option).
- Signage – AS1428.1 Compliant

Optional fitout items

- Basin shroud (colorbond or stainless steel)

Standard Cubicle



Standard fitout items

- GR304 Stainless steel standard pan with plastic cistern and stainless steel pan flush button flashing.
- Standard Landmark toilet roll holders

Optional fitout items

- Basin shroud (colorbond or stainless steel)
- Signage – AS1428.1 Compliant

Other options



- Urinals (tear drop or trough)
- Brass vandal proof keyed tap with hose mount (external or in service duct).
- Hot Water Systems
 - Electric instant or electric storage units
- Porcelain toilets and basins
- Hand Dryers (electric)
- Paper towel and soap dispensers
- Sharps Containers



More Information



Power to save Solar LED



LIGHTING SERIES (K800)

Landmark's K800 Solar Lighting System range is the ideal off-grid solution for shelters, restrooms and public spaces.

A 12-volt solar light system can replace the high cost of running a mains power line to a site, decreases power costs and increases safety.

High quality solar panels from a leading manufacturer are matched with AGM batteries for a superior charging performance. The strong and resilient cased light is vandal resistant.

The LEDs emit a 6000 Kelvin natural light and the low power draw of LEDs relieves the high technology battery of high loading.

The micro controller includes an easy time-adjust ability and is fused in the battery enclosure providing a safe reliable system.

A power-saving option to a timer is a passive infra-red (PIR) motion sensor.

Solar LED light systems are a superior solution, to provide safe use of community areas and amenities.

The solar panel supplied with your system depends on how many lights in the restroom, and the operating hours required.

| Number of lights | Operating hours | Solar panel wattage |
|------------------|-----------------|---------------------|
| | 4 | 110 |
| | 12 | 110 |
| | Sensor | 110 |
| | 4 | 110 |
| | 12 | 190 |
| | Sensor | 110 |
| | 4 | 110 |
| | 12 | 190* |
| | Sensor | 110 |
| | 4 | 190 |
| | 12 | 190* |
| | Sensor | 190 |

* Enclosure for control panel is aluminium or stainless steel

Standard inclusions

- Mono crystalline solar panel
- Waterproof, vandal resistant LED light
- Maintenance-free, low-discharge gel battery
- 12-volt blade fuse holder
- IP65 battery enclosure (non-marine grade or marine grade options available)
- Tamper proof screws

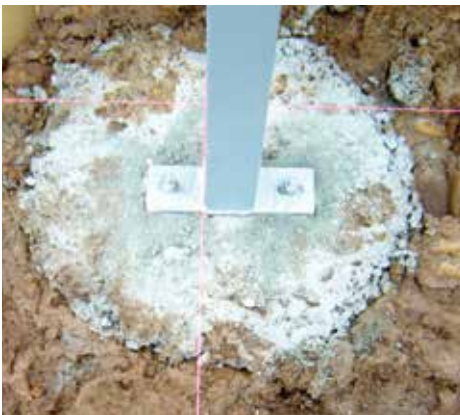
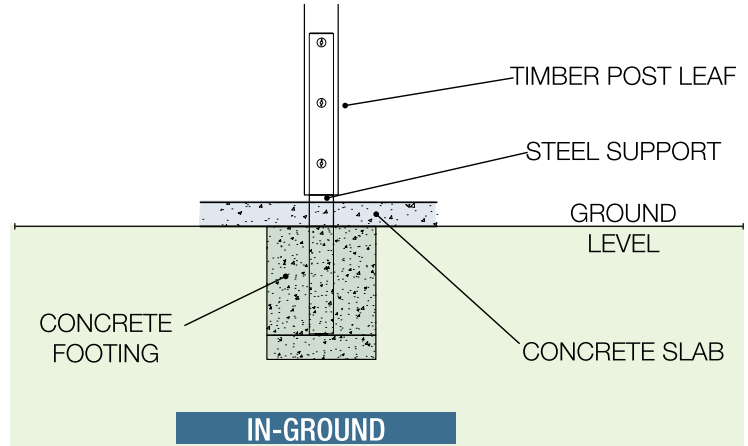


K9406 Coastal Restroom (modified)

STANDARD RESTROOM FOOTINGS

The footings standard to each rest room is listed under “fixings”
The diagrams here illustrate the standard timber and steel post footings available across our restroom range.

TIMBER POST FOOTINGS



STEEL BOLT-BELOW SLAB FOOTING

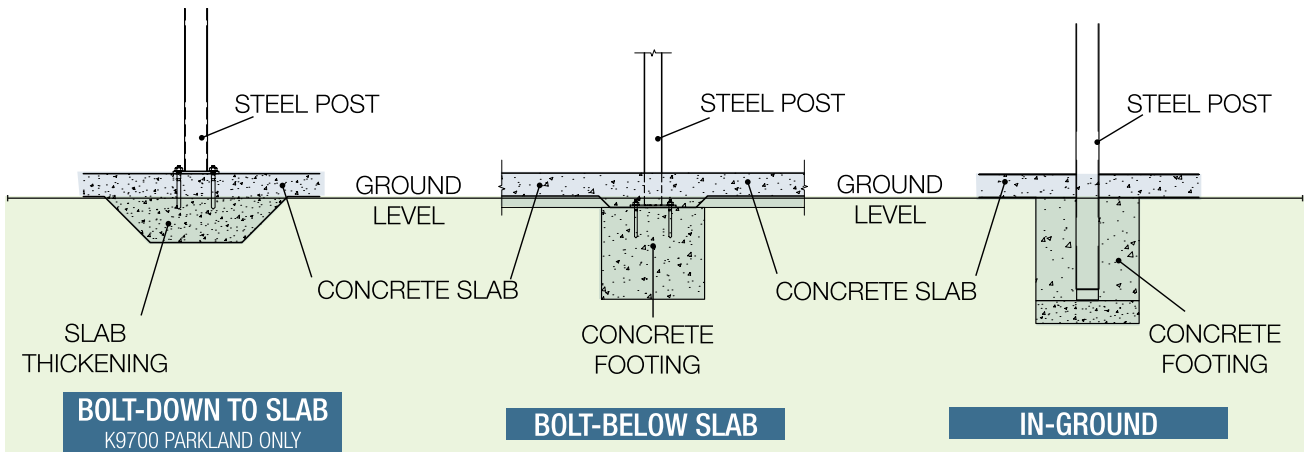


STEEL FRAMEWORK WITH FOOTINGS



STEEL FRAMEWORK AND WALLS ON-SLAB

STEEL POST FOOTINGS





More Information



HORIZONTAL CUSTOM ORB



ALUMINIUM COMPOSITE MATERIAL (ACM)

INTERNAL AND EXTERNAL WALL SHEETING OPTIONS (K9400 and K9500 only)

STANDARD

- Horizontal Custom Orb

OPTIONAL

- Vertical Colorbond®
- Plywood (9mm or 12mm) – stained or painted
- Fibre Cement Sheeting (9mm or 12 mm) painted on-site
- Aluminium Composite Material sheeting
- Other Colorbond® profiles

VENTILATION SCREEN OPTIONS

STANDARD

- Stained pine frames/hardwood slats

OPTIONAL

- Hardwood frames
- Pine flats and if painting is required
- Powder-coated aluminium



STRUCTURAL RATING UPGRADES FOR CYCLONE REGIONS

By default, all Landmark restrooms are designed to comply with a wind rating which is consistent with standards required for non-cyclonic regions of Australia.

Assessing the appropriate wind rating for the location of a shelter requires considering the surrounding terrain, the topographic effect, shielding and design factors.

Landmark Products will manage this entire process, and if necessary, design your structure with a ratings upgrade.

STAINLESS STEEL ANTI-VANDAL FASTENING SYSTEM

Comes with a matching key, the system deters vandals, and reduces theft and destruction.



ROOFING UPGRADE FOR HIGH CORROSIVE ENVIRONMENTS

For structures built in highly corrosive environment, such as near a beach or estuary, Landmark will recommend upgrading the upgrade of steel roofing to Colorbond® Ultra™.

Ultra™ comes in only four colours (see Roofing Colour chart on website).



TRACEABILITY PLAQUE

All Landmark products carry an individual serial number so all product information is readily available in the event of maintenance requirements.

THE LANDMARK ATLAS

If a restroom in the catalogue doesn't meet your specific need, ask your Project Consultant about the Landmark Atlas, a comprehensive directory of pre-engineered, completed modified and custom designs.



CERTIFICATIONS

IS ISO 9001 Certified

This internationally recognised accreditation assures the highest quality standard of manufacture - Landmark is safe, consistent, meets customer expectations, continuously improves and complies with the law.

IS BS OHSAS 18001:2007 Certified

This international Occupational Health and Safety Management certification demonstrates Landmark Products' commitment to sound occupational health and safety performance.

All Landmark structures meet or exceed the National Construction Code (NCC), and other relevant Australian standards including:

- AS1170 Structural Design Actions
- AS 1720 Timber Structures
- AS 4100 Steel Structures
- Plus many others

Our restrooms are designed with CPTED (Crime Prevention through Environmental Design) principles as paramount.

Materials and Finishes

All materials used in our public restrooms are sourced from carefully selected suppliers, known for consistent quality. As a certified ISO 9001 manufacturer offering a 25-year limited structural warranty, Landmark is committed to the highest quality processes to produce consistent, reliable products.



TIMBER

All our timber components are factory stained with our standard CD50 oil-based stain.

Pine: Our premium quality plantation hoop pine is stabilised and treated with safe Light Organic Solvent Preservatives (LOSP) to Hazard Level 3. LOSP treatment is used for structures subject to moist environments, preventing fungal decay of timber.

Hardwood: Our hardwood is select grade, sustainably harvested Western Queensland Hardwood (Spotted Gum or similar), ACQ treated to Hazard Level 4. Hardwood is graded F14 or better (the majority being F17). Ammoniacal Copper Quaternary (ACQ) preservative treatment provides greater safety of storage and application than CCA, yet retains similar performance. Landmark do not recommend painting hardwood.

Rosewood, an attractive and long-lasting timber, is used for timber screens. This too can be stained.

METAL

Steel: Mild-steel, hot-dipped galvanised to comply with AS/NZ 4680 standard, steel can be powder-coated to provide hard-wearing protection and a colourful, attractive finish. For higher level protection, two-pack epoxy paint or thermoplastic coatings can be applied.

Aluminium: Chosen for its resistance to corrosion, aluminium is about 30% as strong as steel, so it is used selectively.

DOWNLOADS

A full range of our colour and finish options is available at: landmarkpro.com.au/downloads



EPOXY/TWO PACK COLOURS



PINE PAINT COLOURS



ROOFING COLOUR OPTIONS



POWDER COATING COLOURS



TIMBER COLOUR TONES

Design and Installation



DESIGN SERVICES

Although we have an extensive range of standard products (which can be modified to your needs), when it comes to custom products, our design process starts with our customers.

A concept that starts in the mind of a developer, an urban planner or landscape architect, can become a place of community and a hub of activity thanks to collaboration with Landmark's experienced design specialists.

For custom work, Landmark's talented design team listen and seek a full understanding of the vision and purpose of each project. The starting point can be an in-depth consultation session, client's providing a few sketches on a page, or a comprehensive set of CAD drawings.

Whatever the starting point, Landmark's design team can "add flesh to the bones", and begin to add the intricate specifics and attention-to-detail needed to complete a project that, at the very least, meets our customers' needs. Ultimately our aim is to exceed expectations.

When it comes to bigger projects, Landmark Products understand that collaboration with other professionals is the key to cutting-edge, multi-faceted design, and our track record of working with landscape architects, urban designers, various consultants and other infrastructure specialists is second-to-none.

INSTALLATION

All Landmark structures are fabricated to be easy-to-install, delivered fully constructed in kit-form with instructions that makes on-site installation faster with less noise, lower environmental impact.

Our products take days or weeks to install on-site where traditional construction methods can take weeks or months.

Landmark's Installation Service includes both project management and the actual installation of the structures, with our own highly experienced installers and a select group of sub-contractors at the ready. Landmark is a licensed builder.

Project Management

Our dedicated Project Managers oversee the delivery and installation process with great attention to detail and quality. They are skilled professionals with experience in relevant construction methods.

On-Site

Landmark installation teams are highly skilled professionals with many years of building and construction experience. They are committed to providing a safe site environment for both themselves and the community.





landmarkpro.com.au | sales@landmarkpro.com.au | 1300 768 230