

LAUFEN



SWISS MADE.

HEART MADE. HAND FINISHED.

CONTENTS

THE COMPANY	2
THE HERITAGE OF LAUFEN	4
THE LAUFEN FORUM	5
SAPHIRKERAMIK	6
DESIGNERS	8
OUTSTANDING DESIGN	9
<hr/>	
ILBAGNOALESSI ONE	10
PALOMBA COLLECTION	16
LIVING SAPHIRKERAMIK	22
INO	26
VAL	30
PALACE	34
LAUFEN PRO A	38
LAUFEN TAPWARE	44
KARTELL BY LAUFEN	46
TWINPLUS	50
CITYPLUS	54
<hr/>	
TECHNICAL DIAGRAMS	58

THE COMPANY

LAUFEN stands for Swissness, quality and design, offering complete bathroom solutions around the world.

LAUFEN in figures

LAUFEN Bathrooms AG is a Swiss company specialising in premium segment solutions for bathrooms.

Their headquarters are located in Laufen near Basel. Managed by the family-owned Roca Group since 1999 LAUFEN runs 7 manufacturing sites in Central Europe, with 2,500 employees and sales offices in 44 countries.



1. Palomba Collection, 2012

2. Living Square, SaphirKeramik, 2013



Making the bathroom a living environment

The personality of this highly traditional Swiss brand reflects a symbiosis of design, quality and functionality. LAUFEN, the premium brand under the Roca umbrella, is one of the world's leading manufacturers with a global distribution network.

The company's core competence is its expertise in the area of sanitaryware manufacturing. Over 120 years, the LAUFEN brand has been using the oldest malleable material known to man to make innovative sanitary products in state-of-the-art plants with renowned Swiss precision. Knowledge of the bathroom as a whole developed from the competence of LAUFEN in ceramics manufacturing and sophisticated design.

What makes LAUFEN products unique at first glance is that their Swiss design unites two major design trends: emotional Italian design from the south and the northern tradition of design precision and clarity.

For LAUFEN, quality has two aspects: manufacturing knowledge and a high degree of practical benefit that the finished bathroom affords the customer – which is often not immediately apparent.

LAUFEN, a Swiss company manufacturing products that allow water, a precious resource, to be used sparingly, demonstrates in this manner a commitment to preserving natural resources and environmentally-friendly production.



**REECE PRODUCT
QUALITY GUARANTEE**

1. The first one-piece, floorstanding washbasin ILBAGNOLESSI One, 2001
2. The LAUFEN Forum is a 6,500 cubic metre architectural statement, a visitor and presentation centre designed by Basel based architects Nissen & Wentzlaff, photographed by Maurizio Marcato



THE HERITAGE OF LAUFEN

From humble beginnings to today's global player

When LAUFEN was founded in Switzerland in 1892, sanitation was still a far cry from the standards and comforts offered today; standards, which were particularly influenced by LAUFEN, the only sanitary ceramics producer that manufactures exclusively in Europe.

Some of the production facilities that belong to the company today can be traced back even further into history. In 1878 for example, the pioneer in the mechanical manufacture of sanitary ceramics was a production site belonging to the Austrian monarchy.

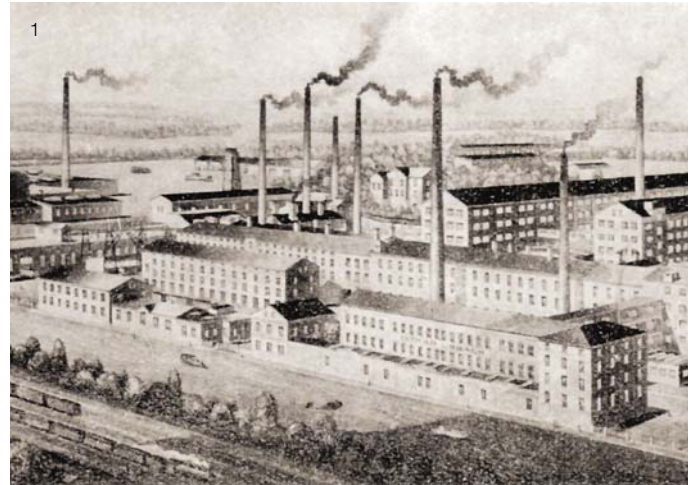
It is not just tradition, but also the strong anchor the various European manufacturing sites maintain in their domestic markets, Switzerland, Austria and Czech Republic, that underpin the quality of LAUFEN as a company. LAUFEN's goal then was the same as today's: to lead in technology, service and design.

Back in the 1980s, LAUFEN engineers invented the most efficient high-pressure casting technology for ceramic production and therefore ensured a sustainable breakthrough in industrial production.

Just as important at LAUFEN are the constant developments in design: wall-mounted toilets and floor-standing washbasins have enabled a new sense of aesthetics. In 2013, LAUFEN's worldwide material innovation SaphirKeramik succeeded in revolutionising the design language of ceramic.

The innovative and valuable SaphirKeramik formulation gives the starting material unprecedented possibilities and scopes. SaphirKeramik is used when a design includes thin walled shapes and tight radii.

LAUFEN has extended its expertise and its portfolio of ceramic products, bathtubs, furniture and accessories to include tapware. In 1854 Charles Kugler founded a small company for brass products in Lausanne. The first water and gas fittings on Swiss soil were made there in 1863. Since 2009, tapware has been produced at the newly built factory in Laufen, Switzerland.



1. First mechanical factory for sanitaryware on the European continent, Znojmo
2. SaphirKeramik, a new formulation revolutionises the design language of ceramic, January 2013
3. Invention of the wall hung toilet by LAUFEN engineer Xaver Jermann, 1964

THE LAUFEN FORUM



A building of great symbolic value

LAUFEN is synonymous with perfection in terms of form and craftsmanship and for advanced technology with an unobtrusive face. LAUFEN's headquarters in the Baselland canton reflect this identity. Ludovica+Roberto Palomba designed "bowl/08", a washbasin for the PALOMBA COLLECTION. Architects Nissen & Wentzlauff created a larger version of this object in the form of the building which stands out with its impressive exposed concrete and elegant statics.

An inventive spirit and desire for technical innovation are also part of the building's concept and (just like the manufacture of LAUFEN's products) require efficient resource usage and an acceptable ecological footprint. As a result, the multi-award-winning building is an outstanding feature in the Basel area which is rich in superb architecture.

With the Forum, LAUFEN has created a new architectural setting for its products: it is a comprehensive architectural statement in concrete with the bathroom at its centre and acknowledges Switzerland unequivocally as the company's headquarters and production site. A space for the bathroom with the power to inspire clients, architects, retailers and tradesmen alike and provide a source of information.

This is also the home of the training centre of LAUFEN Bathrooms AG. A wide range of seminars are held here to train groups and communicate product knowledge. Training sessions also take place in the Sky Gallery in Wilhelmsburg, Austria, and in Znojmo in the Czech Republic.

LAUFEN won the 'Award for Marketing + Architecture' in the category 'Office and Commercial Buildings – Industrial and Commercial Interiors' in 2010. It also won the 'Green Good Design Award' in 2011 and the 'Best Architects Award' in the category 'Business and Industrial Buildings' in 2011.



1. The Canton of Baselland between the Doubs and the Rhine River
2. The LAUFEN Forum, which focuses on the bathroom
3. LAUFEN headquarters with Forum, ceramic factory, tapware factory, training centre and logistic centre in the Baselland canton

SAPHIRKERAMIK

Freedom to reshape

Launched in 2013, SaphirKeramik is pioneering Swiss company LAUFEN's latest innovation. This revolutionary, ceramic material reaches its exceptional hardness blended with corundum, a colourless mineral, which is a component of sapphires. This gives SaphirKeramik a flexural strength equal to that of steel. Yet, it has potential to be wafer-thin, giving designers almost infinite freedom to experiment – and tear up the rulebook of bathroom design.

With over two years of experience producing SaphirKeramik pieces on an industrial scale, LAUFEN is now stretching the patent-pending material's limits by exploiting its super-fine forms not only to create exquisitely detailed textures and patterns but also by engineering the innovative material to increase its maximum size – a 120 cm-long washbasin in SaphirKeramik is the largest to date. LAUFEN has also applied its impressively efficient, high-pressure casting technology to other, high-volume pieces in SaphirKeramik.

In collaboration with cutting-edge designers Konstantin Grcic and Toan Nguyen, LAUFEN unveiled design prototyping at such prestigious design events as the Milan Furniture Fair, Art Basel / Design Miami and London Design Festival 2014. Visitors appreciated the wondrous qualities of ceramic – its tactile appeal, luminosity and enduringly spotless surface – and SaphirKeramik's impossibly thin and robust walls.

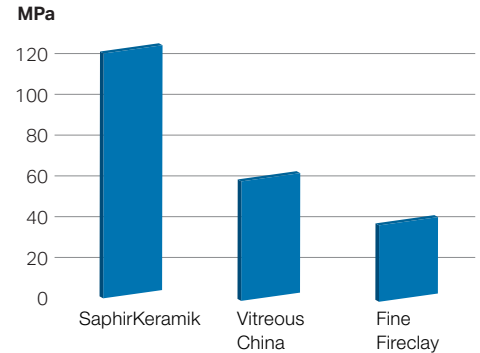
SaphirKeramik



Proven sanitaryware

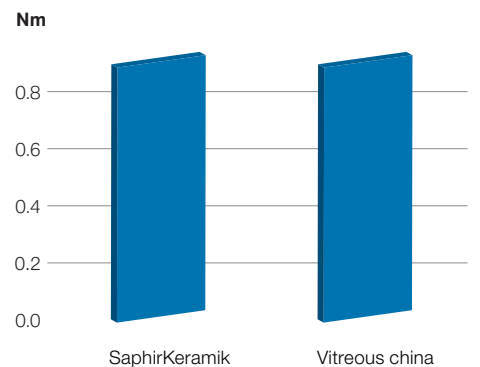


BENDING STRENGTH



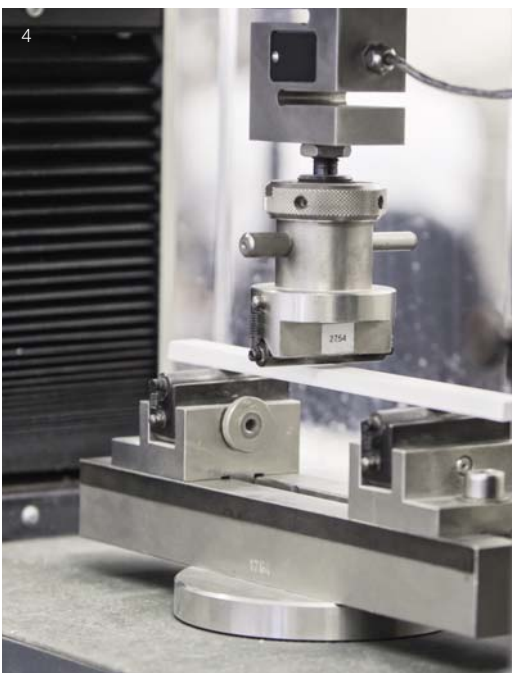
Source: Bundesanstalt für Materialforschung-und Prüfung, Berlin, 2011

IMPACT ENERGY



Source: Keramik-Institut GmbH, Meissen, 2011

Simultaneously hard and malleable, SaphirKeramik enables pieces to be made with very thin, yet very strong walls of only 3–5 mm, as well as with narrowly defined radii of only 1–2 mm. The slim profile of SaphirKeramik means that it saves space, is light and environmentally friendly. The new design characteristics of this innovative material are rooted in its exceptional hardness and strength. When the mechanical properties of the two traditional sanitary ceramic masses – namely vitreous china and fine fireclay – are compared, the performance of SaphirKeramik is unique even in international comparison. The comparative values measured by the Federal Institute for Materials Research and Testing in Berlin (BAM) for SaphirKeramik are, at an average of over 120 MPa, comparable with carbon steel and twice as high as vitreous china.



1. Production site for the manufacture of SaphirKeramik in Gmunden (Upper Austria)
2. Kartell by Laufen washbasin, SaphirKeramik, 2015
3. The thin-walled SaphirKeramik was tested for impact resistance at the Keramik Institut Meissen
4. SaphirKeramik has a two to three times higher bending resistance than traditional ceramics

DESIGNERS

MEET INTERNATIONALLY ACCLAIMED DESIGNERS OF LAUFEN

Andreas Dimitriadis

Having collaborated with Phoenix Design, Andreas Dimitriadis is no stranger to LAUFEN. Since 2007, Dimitriadis has continued this fruitful partnership working from his own design studio Platinumdesign. He has designed several bathroom series for LAUFEN including Living SaphirKeramik, palace, twinplus and cityplus.



Peter Wirz

Having studied mechanical engineering in Switzerland, Wirz has since been dealing with customers from Switzerland, Europe and overseas for the past two decades with his design hotbed, Vetica. In a relationship that began in 2001, Wirz has developed several product lines for LAUFEN, the most recent being the international hit, LAUFEN pro A.

Stefano Giovannoni

Not only does Giovannoni design industrial products in the fields of kitchen, bathroom, furniture, living and electronics, he also creates interiors and architecture. His works are part of the permanent archive of the Georges Pompidou Centre in Paris and of the collection of the Museum of Modern Art in New York. On top of an acclaimed body of work, he also designs for brands, including ILBAGNOALESSI One for LAUFEN.



Konstantin Grcic

Having developed furniture, products and lighting for some of the world's leading companies in the design field. Grcic is known for his pared-down pieces and is often called a minimalist. However, he prefers to speak of simplicity. His most recent work includes the VAL collection.



Ludovica+ Roberto Palomba

The couple are famed for their unconventional bathroom, kitchen and living area design. Their unusual designs result from the combination of their feel for architecture, lifestyle and industrial objects.



Toan Nguyen

A keen sense of the trends and developments in society, as well as the environment, is a characteristic feature of Toan Nguyen. The multidisciplinary designer specialises in design development within various product sectors, from furniture to technology products. His most recent work includes designing the Ino collection for LAUFEN.

OUTSTANDING DESIGN AWARDED DESIGNS OF LAUFEN

The aesthetic design and the high creative product quality of LAUFEN products have already convinced a large number of international judges and independent organisations and resulted in awards for individual products, whole series, innovative materials and showrooms.



DESIGN PLUS



2013 ■



1. Ino Wall Basin
2. PALOMBA COLLECTION Wall Basin 1200
3. cityplus Extended Basin Mixer
4. Kartell by Laufen Collection
5. VAL Counter Basin 550
6. Living SaphirKeramik Counter Basin 360



ILBAGNOALESSI ONE

Design by
Stefano Giovannoni





Tapware and accessories not available in Australia and New Zealand.

ILBAGNOALESSI ONE

DESIGN BY STEFANO GIOVANNONI

Characterised by organic forms that each speak the same sensuous design language, ILBAGNOALESSI One is a winner of Europe's prestigious Design Plus Award. The gentle, rounded shapes of ILBAGNOALESSI One reflect the work of nature itself – inspired by the idea of a stone that has been smoothed by water over time.

ILBAGNO**ALESSI** One



Tapware, accessories and furniture not available in Australia and New Zealand.



Freestanding Bath

2030 x 1020mm
Depth 460mm
Use capacity 230 ltrs



Freestanding Basin 530

0 or 1 taphole
530 x 530 x 900mm



Semi-Recessed Basin 750

1 taphole
750 x 500 x 140mm



Counter Basin 750

1 taphole
750 x 520 x 120mm



Counter Basin 450

0 taphole
450 x 450 x 400mm

ILBAGNOALESSI ONE



Tapware, accessories and furniture not available in Australia and New Zealand.



Vanity Unit

1350 x 490 x 320mm
Soft close finger pull drawers
Walnut timber veneer | Two drawers

Seamless integration with
ILBAGNOALLESSI One 1600 Wall Basin
(can also be bought separately)



Vanity Unit

995 x 485 x 320mm
Soft close finger pull drawers
Walnut timber veneer | Two drawers

Seamless integration with
ILBAGNOALLESSI One 1200 Wall Basin
(can also be bought separately)



Vanity Unit

730 x 475 x 320mm
Soft close finger pull drawers
Walnut timber veneer | Two drawers

Seamless integration with
ILBAGNOALLESSI One 900 Wall Basin
(can also be bought separately)



Wall Basin 1600

0 or 1 taphole
1600 x 350/500 x 165mm



Wall Basin 1200

0 or 1 taphole
1200 x 350/500 x 165mm



Wall Basin 900

0 or 1 taphole
900 x 350/500 x 165mm



Wall Pedestal Basin 520

0 or 1 taphole
520 x 530 x 850mm



Wall Basin 520

0 or 1 taphole
520 x 525 x 430mm



Drop-In Basin 500

0 or 1 taphole
500 x 500 x 225mm



Back To Wall Toilet Suite

WELS 4 star, 4.5/3 ltr flush
Average flush, 3.3 ltr flush
Back inlet



Back To Wall Pan

WELS 4 star, 4.5/3 ltr flush
Average flush, 3.3 ltr flush



Wall Hung Pan

WELS 4 star, 4.5/3 ltr flush
Average flush, 3.3 ltr flush

PALOMBA
COLLECTION

Design by Ludovica+
Roberto Palomba





Tapware, accessories, furniture and bidet not available in Australia and New Zealand.

PALOMBA COLLECTION

DESIGN BY LUDOVICA+ROBERTO PALOMBA

Ludovica+Roberto Palomba are famed for their unconventional bathroom, kitchen and living area designs, having shot to stardom in the Italian design scene through their work for brands such as Moroso, Poltrona Frau, Cappellini and Boffi. Their unusual designs are born from a deep understanding of architecture, lifestyle and industrial objects. PALOMBA COLLECTION is the couple's first bathroom project for LAUFEN. They describe this concept as the 'fingerprint of nature'. The boundaries between masculine and feminine forms become blurred. The character of the design is not rigidly fixed but hovers between geometrical and organic forms. All elements of the collection harmonise with one another and bear the visual signature of the Italian designer couple.

PALOMBA COLLECTION



Tapware, accessories and furniture not available in Australia and New Zealand.



**Solid Surface
Freestanding Bath**

1800 x 900mm
Depth 440mm
Use capacity 160 ltrs



**Floorstanding
Basin**

1 taphole
525 x 400 x 900mm



**Floorstanding Basin
with Wall Connection**

1 taphole
525 x 435 x 900mm



Back To Wall Toilet Suite

WELS 4 star, 4.5/3 ltr flush
Average flush, 3.3 ltr flush
Back inlet



Back To Wall Pan

WELS 4 star, 4.5/3 ltr flush
Average flush, 3.4 ltr flush



Wall Hung Pan

WELS 4 star, 4.5/3 ltr flush
Average flush, 3.4 ltr flush

PALOMBA COLLECTION



Furniture not available in Australia and New Zealand.



Vessel Basin 520

0 taphole
520 x 380mm



Vessel Basin 600

1 taphole
600 x 400mm



Counter Basin 900

0 taphole
900 x 420 x 160mm



Wall Basin 800

1 taphole
800 x 500mm



Wall Basin 1000

0 or 1 taphole
1000 x 500 x 160mm



Wall Basin 1200

1 taphole
1200 x 500 x 155mm

LIVING
SAPHIRKERAMIK

Design by
Andreas Dimitriadis



LIVING SAPHIRKERAMIK

DESIGN BY ANDREAS DIMITRIADIS

Featuring defined edges and a slender outline, Living SaphirKeramik is a modular system for people who live in modern surroundings.

SaphirKeramik, a new material innovation filed for patent from Swiss manufacturer LAUFEN that is set to change the bathroom landscape. Where once there was the curve, now there's the tight edge-radius. Fuller forms have given way to delicate, but robust, filigree walls; A super-strong ceramic material that allows itself to be fashioned along minimal, architectural lines.

Historically, vitreous china and fine fireclay have been used to make ceramic sanitaryware. And with good reason: they're hygienic, hard-wearing and recyclable. LAUFEN itself is renowned for maximising their creative potential, notably by manufacturing the world's largest fine fireclay pieces.

LIVING SAPHIRKERAMIK 



Tapware, accessories and furniture not available in Australia and New Zealand.



Counter Basin 360

0 taphole
360 x 360mm



Counter Basin 600

0 taphole
600 x 340mm

INO

Design by
Toan Nguyen





Tapware, accessories and furniture not available in Australia and New Zealand.

INO

DESIGN BY TOAN NGUYEN

The new bathroom collection Ino, designed for LAUFEN by French designer Toan Nguyen, understands itself as a fresh interpretation of classic washbasin forms. The innovative collection skillfully uses the creative possibilities of LAUFEN's SaphirKeramik. Elegant, inviting and almost weightless objects, the pieces work with simple lines, creating soft yet extremely stable walls.

INO



Tapware, accessories and furniture not available in Australia and New Zealand.



Wall Counter Basin 450

1 taphole
450 x 410mm
Overflow



Wall Counter Basin 560

1 taphole
560 x 450mm
Overflow



Wall Basin 900

0 or 1 taphole
900 x 450mm
Overflow
Right hand shelf



Wall Basin 900

0 or 1 taphole
900 x 450mm
Overflow
Left hand shelf



Vessel Basin 350

0 taphole
350 x 360mm
Overflow



Vessel Basin 500

0 taphole
500 x 360mm
Overflow



Semi-Inset Basin 350

0 taphole
350 x 365mm
Overflow



Semi-Inset Basin 500

0 taphole
500 x 365mm
Overflow

VAL

Design by
Konstantin Grcic





VAL

DESIGN BY KONSTANTIN GRČIĆ

The extraordinary design potential of LAUFEN's revolutionary SaphirKeramik reveals itself in the new bathroom collection VAL, designed for the Swiss bathroom specialist by star designer Konstantin Grcic from Munich. Simple architectural lines, extremely narrow edges and fine surface structures make the washbasins of this collection globally unique. Its trademark, straight geometric lines and walls with small radii and gently rounded corners emphasise the humane and friendly character of the delicate SaphirKeramik.

VAL



Tapware, accessories and furniture not available in Australia and New Zealand | Australian/New Zealand model includes overflow.



Wall Counter Basin 450

1 taphole
450 x 420mm
Overflow



Wall Counter Basin 550

1 taphole
550 x 420mm
Overflow



Wall Counter Basin 750

1 taphole
750 x 420mm
Overflow



Round Counter Basin 500

0 or 1 taphole
500 x 400mm
Overflow



Counter Basin 550

0 taphole
550 x 360mm
Overflow

PALACE

Design by
Andreas Dimitriadis





Tapware, accessories, furniture, bidet and basin not available in Australia and New Zealand.

PALACE

DESIGN BY ANDREAS DIMITRIADIS

A timeless classic, designed for the future. Today, palace is at home both in private bathrooms and the hotel bathrooms of this world. A celebration of ceramics which showcases its strong qualities in both environments.

The palace toilet pans impress with ergonomic design and concealed fixtures.

palace



Accessories and shower system not available in Australia and New Zealand.



Tapware, accessories, furniture, bidet and basin not available in Australia and New Zealand.



Palace Back To Wall Suite

WELS 4 star, 4.5/3 ltr flush
Average flush, 3.4ltr flush
Back or bottom inlet available



Back To Wall Pan

WELS 4 star, 4.5/3 ltr flush
Average flush, 3.4 ltr flush



Wall Hung Pan

WELS 4 star, 4.5/3 ltr flush
Average flush, 3.3 ltr flush

LAUFEN PRO A

Design by
Peter Wirz





LAUFEN PRO A

DESIGN BY PETER WIRZ

LAUFEN pro A is a comprehensive bathroom range, which offers the ideal solution for every spatial situation and requirement and also reflects the building values of the current generation. Industrial design is the modern answer to the once revolutionary idea that everyone has a right to enjoy beautiful forms. Good design no longer a right reserved for the most affluent customers. Modern methods of industrial production and designers such as Peter Wirz of Vetica, who put optimum manufacturing feasibility at the forefront of their creative processes, make such sanitaryware ranges as LAUFEN pro A possible. This does not just benefit the designer, more importantly, it also benefits the customer.

LAUFEN PRO A



Tapware and accessory not available in Australia and New Zealand.



Wall Basin 360

1 taphole
360 x 250 x 165mm
Overflow



Wall Basin 550

1 taphole
550 x 480 x 170mm
Overflow



Wall Basin 850

1 taphole
850 x 480 x 170mm
Overflow | Chrome frame available



Wall Basin 1050

1 taphole
1050 x 480 x 170mm
Overflow | Chrome frame available



Semi-Recessed Basin 560

1 taphole
560 x 440 x 185mm
Overflow



Undercounter Basin 550

0 taphole
550 x 380mm
Overflow



Semi-Pedestal For Wall Basin

Not suitable for Wall Basin 360



Wall Basin Frame

850mm or 1050mm
Chrome frame

LAUFEN PRO A



Tapware and accessories not available in Australia and New Zealand.



Back To Wall Toilet Suite

WELS 4 star, 3/4.5 ltr flush
Average flush, 3.3 ltr flush
Back or bottom inlet available



Back To Wall Pan

WELS 4 star, 3/4.5 ltr flush
Average flush, 3.3 ltr flush



Wall Hung Pan

WELS 4 star, 3/4.5 ltr flush
Average flush, 3.5 ltr flush



Back to Wall Bidet

1 taphole
Overflow
Tapware and waste sold separately

Flex Hose and Mini Stop installed with this product must be exposed and accessible as per Australian Standards.

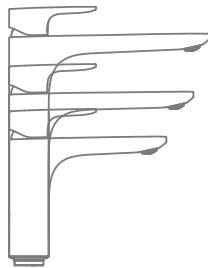
LAUFEN TAPWARE

Sophisticated design and Swiss engineering come together to create the LAUFEN tapware range. Three premier tapware collections, Kartell by Laufen, cityplus and twinplus, each celebrating LAUFEN's signature approach to beauty and craftsmanship in the bathroom.

Designed to fit any space

Three height options allows you to choose your LAUFEN tapware to suit your counter space and bathroom style.

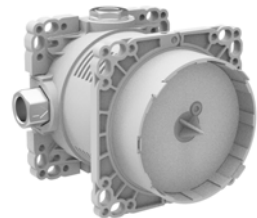
Extended basin mixer – perfect for counter basins. Mid basin mixer – a subtle statement with a little extra height. Basin mixer – designed for basins with a taphole.



An ingenious solution

Simibox is an architectural solution that allows you to conceal your modern tapware technology behind the wall, giving you easy access while also freeing up much needed space in your bathroom.

It also takes care of all the behind-the-scenes mechanics meaning you can update your tapware quickly and efficiently.



Ecototal water saving

LAUFEN technology has long been committed to saving water and electricity. Ecototal is a revolutionary technical solution fitted in the cartridge to reduce water and energy consumption, providing a clever water saving solution.

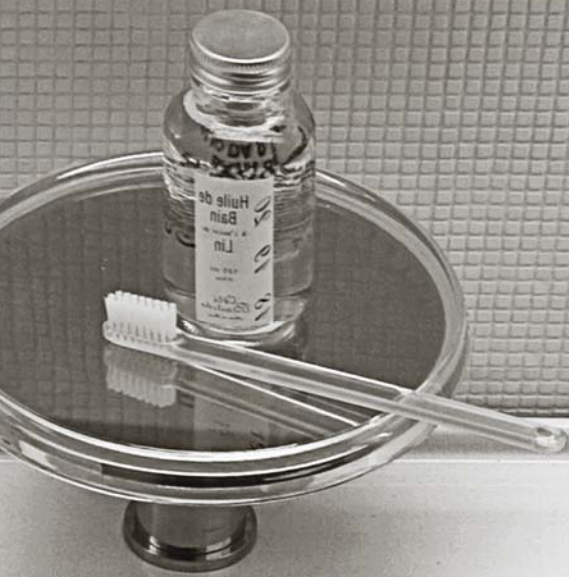




Accessories not available in Australia and New Zealand.

KARTELL BY LAUFEN

Design by Ludovica+
Roberto Palomba



KARTELL BY LAUFEN

DESIGN BY LUDOVICA+ROBERTO PALOMBA

A complete bathroom project inspired by the iconic design of Kartell together with the quality of LAUFEN. On one hand, Kartell, Italian, creative, colourful and iconic. The family company that has marked the history of design and revolutionised furnishing in the use of plastic materials for over 60 years. On the other, LAUFEN, Swiss, rigorous and reliable. For 125 years, a great commitment to make culture in the bathroom and innovation in the production of ceramic sanitaryware.

Kartell by **LAUFEN**



Accessory not available in Australia and New Zealand.



Disc Basin Mixer

Chrome/transparent crystal disc
WELS 4 star, 7.5 ltrs/min
Clearance 105mm | Reach 110mm



Disc Extended Height Basin Mixer

Chrome/transparent crystal disc
WELS 4 star, 7.5 ltrs/min
Clearance 224mm | Reach 110mm



Disc Bath Column with Handshower

Chrome/transparent crystal disc
WELS 3 star, 9 ltrs/min
Clearance 783mm | Reach 202mm



Shower/Bath Mixer

Chrome
Backplate 139mm



Shower/Bath Mixer with Diverter

Chrome
Backplate 139mm



Wall Outlet

Chrome
Reach 175mm



Wall Basin Mixer Set

Chrome
WELS 5 star, 5.5 ltrs/min
Reach 175mm

TWINPLUS

Design by
Andreas Dimitriadis





Accessory not available in Australia and New Zealand.

TWINPLUS

DESIGN BY ANDREAS DIMITRIADIS

The twinplus tapware collection exudes sophistication and iconic style. An all-round design solution for the modern bathroom, the LAUFEN twinplus Wall Outlet features minimal, seamless lines and is a perfect complement to any bathroom.

This stylish and contemporary range is the epitome of understated elegance. It also reflects LAUFEN's acclaimed skill and expertise in production and design.

twinplus



Furniture not available in Australia and New Zealand.



Basin Mixer

Chrome
WELS 4 star, 7.5 ltrs/min
Clearance 105mm | Reach 109mm



Mid Basin Mixer

Chrome
WELS 4 star, 7.5 ltrs/min
Clearance 121mm | Reach 140mm



Extended Basin Mixer

Chrome
WELS 4 star, 7.5 ltrs/min
Clearance 190mm | Reach 180mm



Shower/Bath Mixer

Chrome
Backplate 139mm



Shower/Bath Mixer with Diverter

Chrome
Backplate 139mm



Wall Outlet

Chrome
Reach 185mm



Wall Basin Mixer Set

Chrome
WELS 5 star, 5.5 ltrs/min
Reach 195mm



CITYPLUS

Design by
Andreas Dimitriadis



CITYPLUS

DESIGN BY ANDREAS DIMITRIADIS

Lavish surfaces and a fascinating design are the stunning credentials of the cityplus tapware range. The LAUFEN cityplus Basin Mixer celebrates urban living and is defined by pure, soft square lines. A 'zero' dial handle option is available with six coloured inserts for customisation.

cityplus



Accessories not available in Australia and New Zealand.



Basin Mixer

Chrome
WELS 4 star, 7.5 ltrs/min
Clearance 103mm | Reach 115mm
Also available with zero handle kit



Mid Basin Mixer

Chrome
WELS 4 star, 7.5 ltrs/min
Clearance 119mm | Reach 140mm
Also available with zero handle kit



Extended Basin Mixer

Chrome
WELS 4 star, 7.5 ltrs/min
Clearance 239mm | Reach 191mm
Also available with zero handle kit



Wall Outlet

Chrome
Reach 185mm



Shower/Bath Mixer

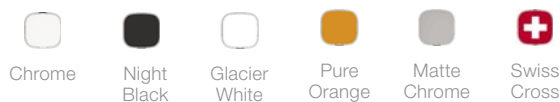
Chrome
Backplate 139 x 143mm



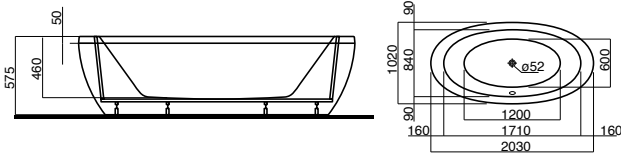
Shower/Bath Mixer with Diverter

Chrome
Backplate 139 x 143mm

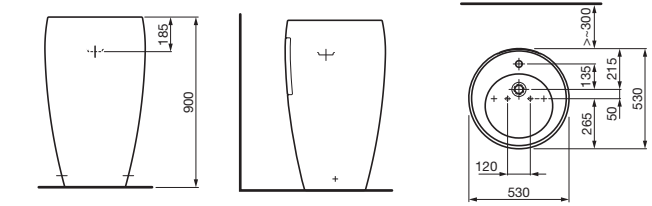
Zero handles come with 6 coloured inserts for handle customisation.



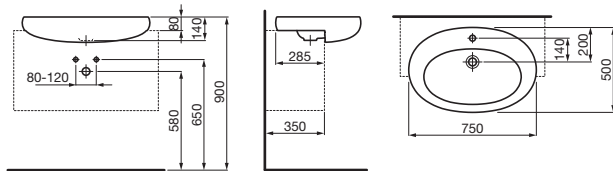
ILBAGNOALESSI ONE



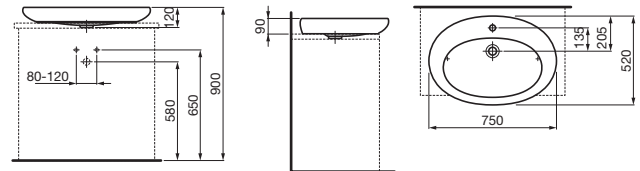
ILBAGNOALESSI One Freestanding Bath



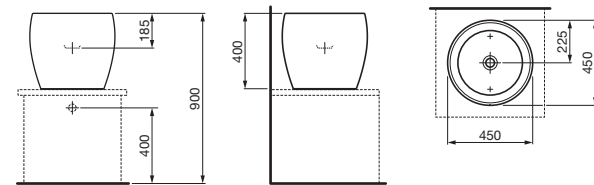
ILBAGNOALESSI One Freestanding Basin 530



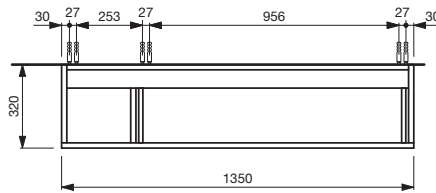
ILBAGNOALESSI One Semi-Recessed Basin 750



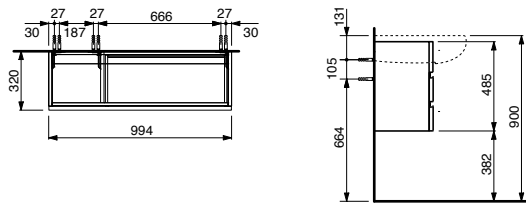
ILBAGNOALESSI One Counter Basin 750



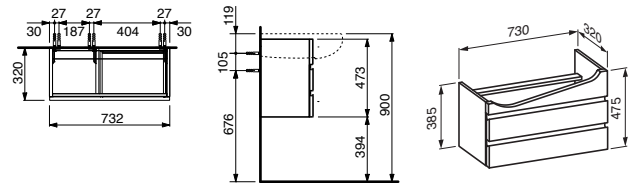
ILBAGNOALESSI One Counter Basin 450



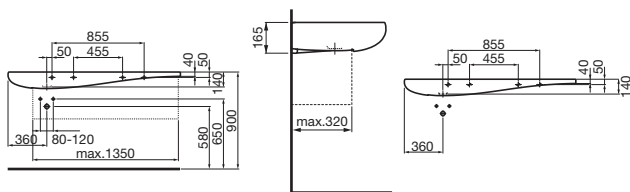
ILBAGNOALESSI One Vanity Unit 1350



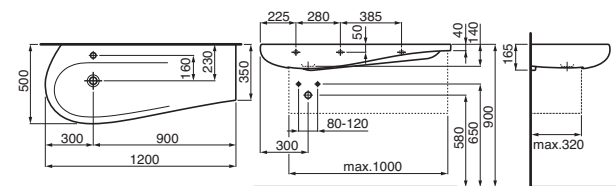
ILBAGNOALESSI One Vanity Unit 995



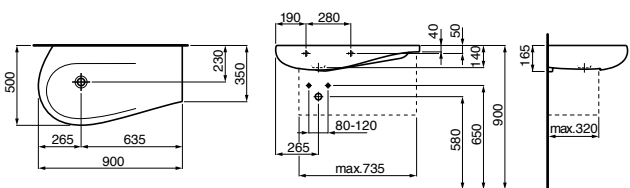
ILBAGNOALESSI One Vanity Unit 730



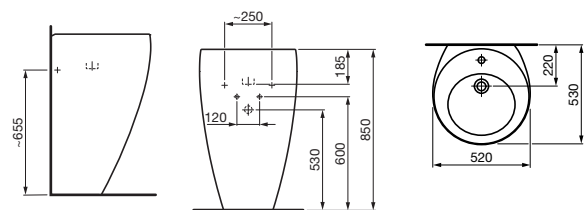
ILBAGNOALESSI One Wall Basin 1600



ILBAGNOALESSI One Wall Basin 1200



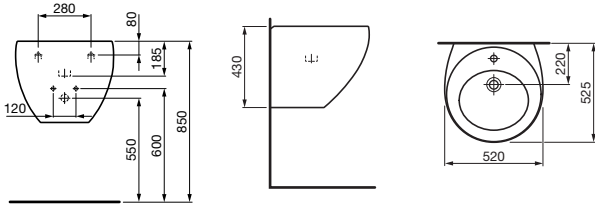
ILBAGNOALESSI One Wall Basin 900



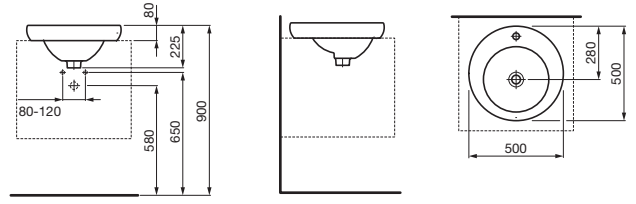
ILBAGNOALESSI One Wall Pedestal Basin 520

Plumbing measurements are a recommendation only and will vary based on trap and waste selection.

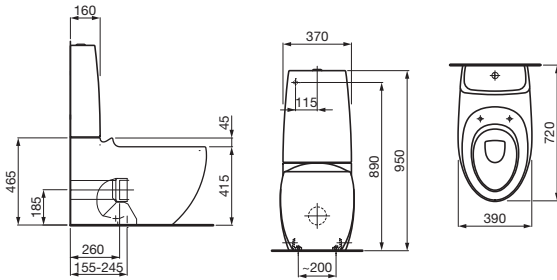
ILBAGNOALESSI ONE



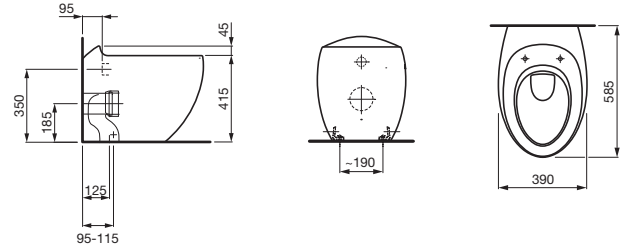
ILBAGNOALESSI One Wall Basin 520



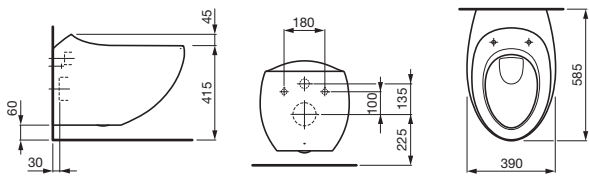
ILBAGNOALESSI One Drop-In Basin 500



ILBAGNOALESSI One Back To Wall Toilet Suite
S Trap: 155-245mm, P Trap: 185mm, Back Inlet

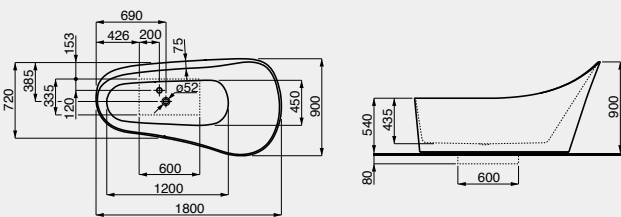


ILBAGNOALESSI One Back To Wall Pan
S Trap: 95-115mm, P Trap: 185mm

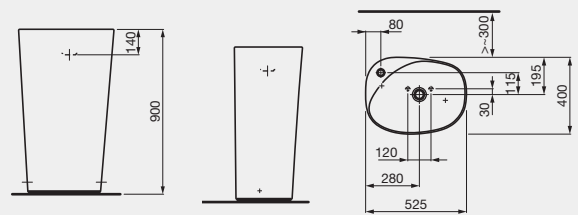


ILBAGNOALESSI One Wall Hung Pan. P Trap: 225mm

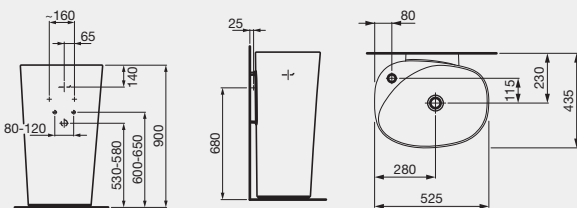
PALOMBA COLLECTION



PALOMBA COLLECTION Solid Surface Freestanding Bath



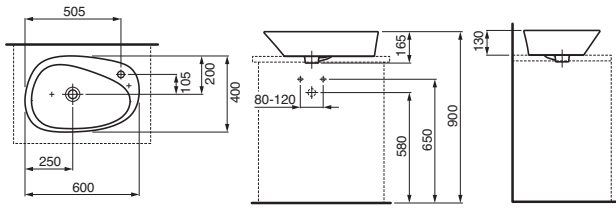
PALOMBA COLLECTION Floorstanding Basin



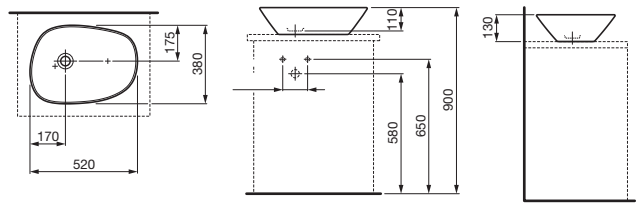
PALOMBA COLLECTION Floorstanding Basin with Wall Connection

Plumbing measurements are a recommendation only and will vary based on trap and waste selection.

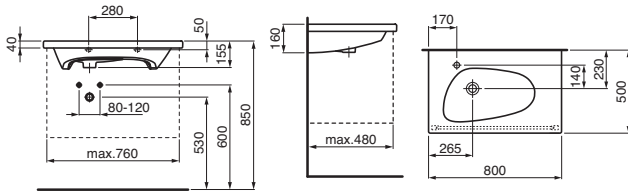
PALOMBA COLLECTION



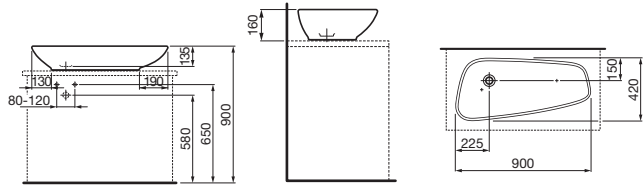
PALOMBA COLLECTION Vessel Basin 600



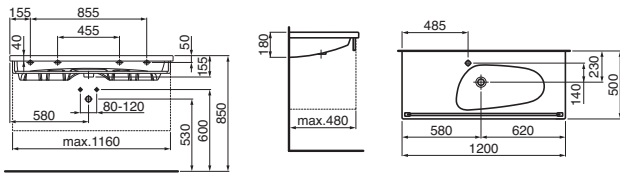
PALOMBA COLLECTION Vessel Basin 520



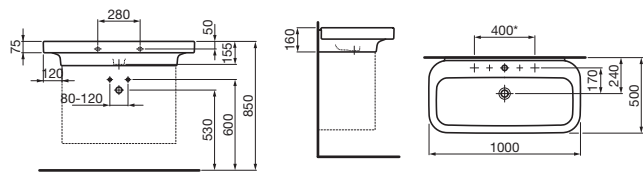
PALOMBA COLLECTION Wall Basin 800



PALOMBA COLLECTION Counter Basin 900



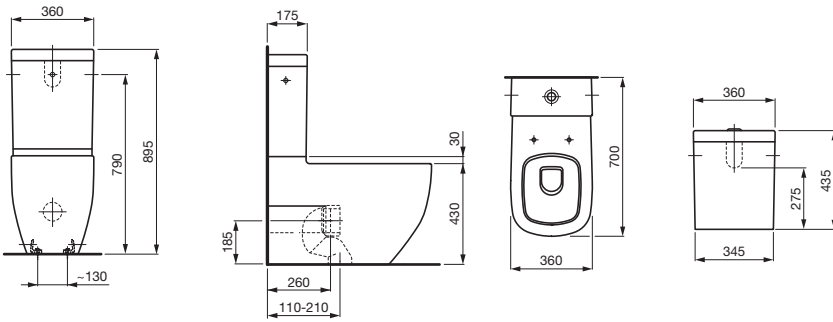
PALOMBA COLLECTION Wall Basin 1200



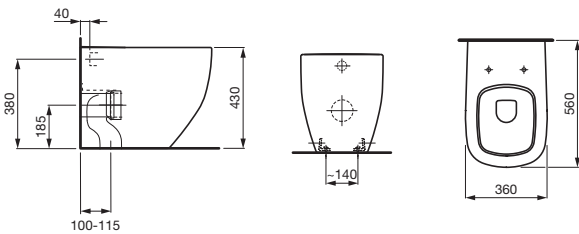
PALOMBA COLLECTION Wall Basin 1000

Plumbing measurements are a recommendation only and will vary based on trap and waste selection.

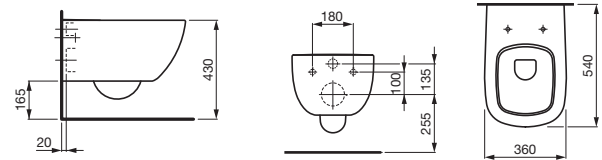
PALOMBA COLLECTION



PALOMBA COLLECTION Back To Wall Toilet Suite
S Trap: 110-210mm, P Trap: 185mm, Back Inlet



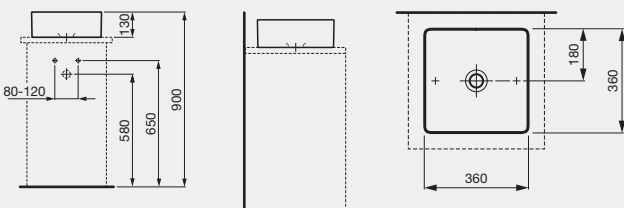
PALOMBA COLLECTION Back To Wall Pan
S Trap: 100-115mm, P Trap: 185mm




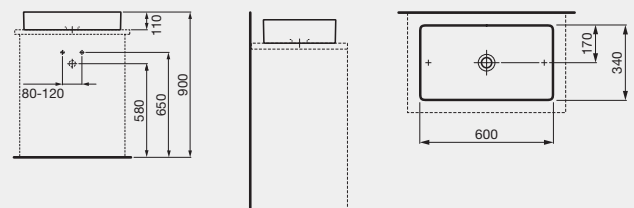
PALOMBA COLLECTION Wall Hung Pan
P Trap: 255mm


LIVING SAPHIRKERAMIK

SAPHIRKERAMIK

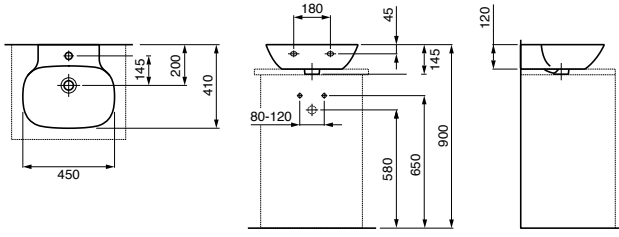


 Living SaphirKeramik Counter Basin 360

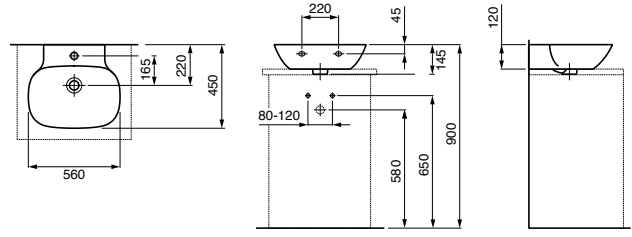


 Living SaphirKeramik Counter Basin 600

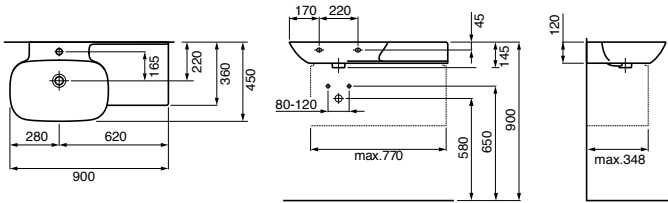
Plumbing measurements are a recommendation only and will vary based on trap and waste selection.



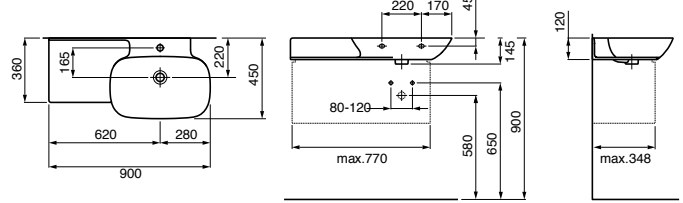
Ino Wall Counter Basin 450



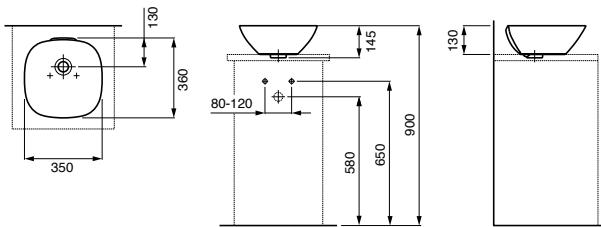
Ino Wall Counter Basin 560



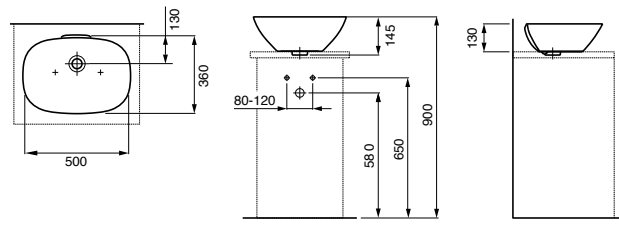
Ino Wall Basin Right Hand Shelf 900



Ino Wall Basin Left Hand Shelf 900

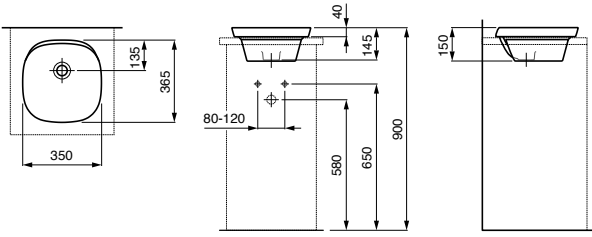


Ino Vessel Basin 350

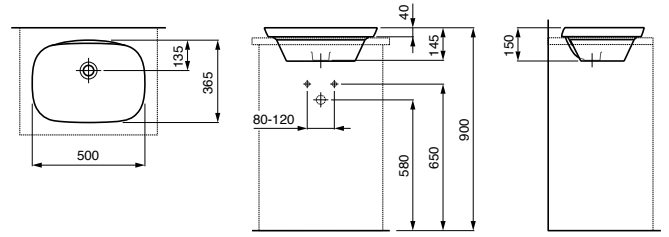


Ino Vessel Basin 500

INO

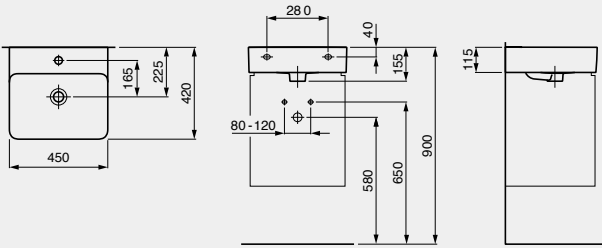


Ino Semi-Inset Basin 350

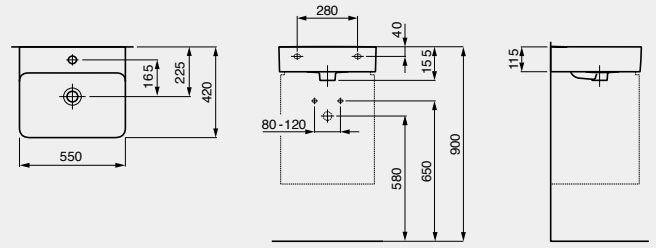


Ino Semi-Inset Basin 500

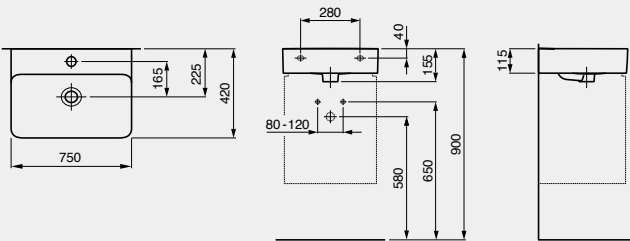
VAL



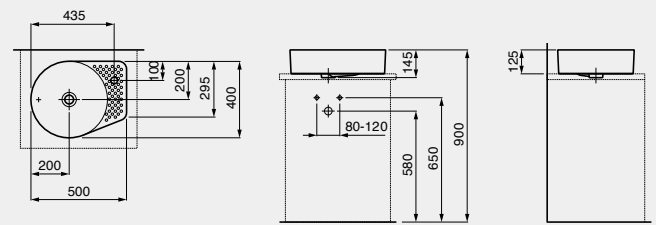
VAL Wall Counter Basin 450



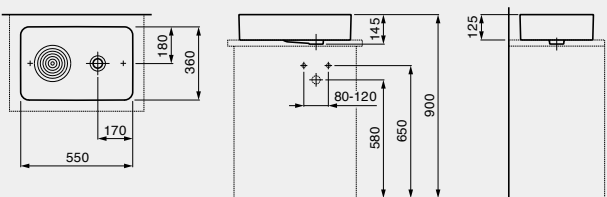
VAL Wall Counter Basin 550



VAL Wall Counter Basin 750



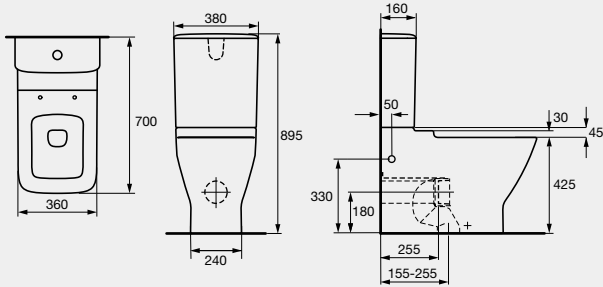
VAL Round Counter Basin 500



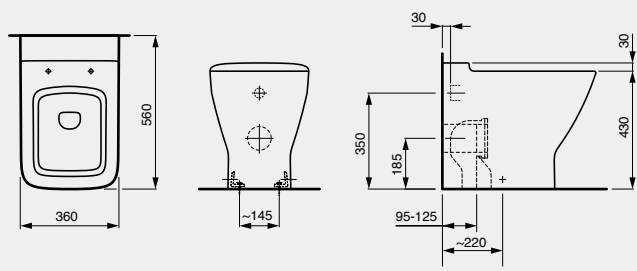
VAL Counter Basin 550

Plumbing measurements are a recommendation only and will vary based on trap and waste selection.

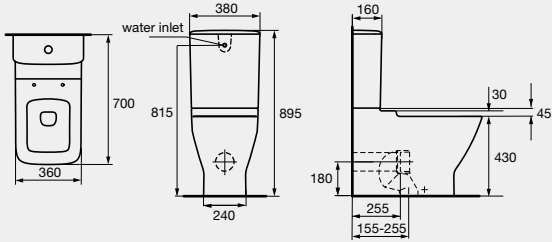
PALACE



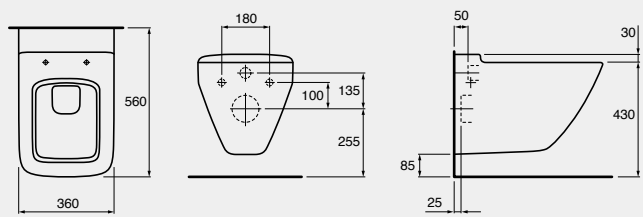
palace Back To Wall Suite Bottom Inlet



palace Back To Wall Pan

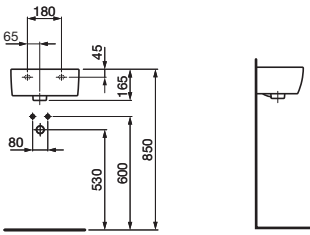


palace Back To Wall Pan Back Inlet

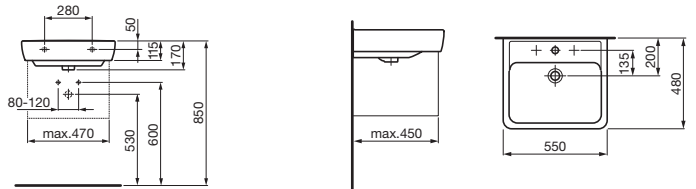


palace Wall Hung Pan

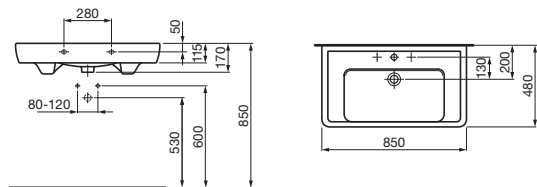
LAUFEN PRO A



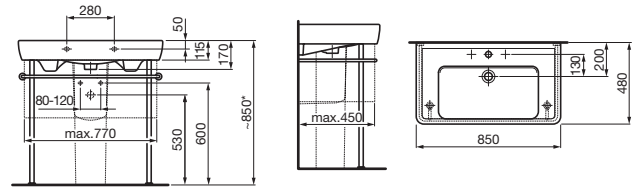
LAUFEN pro A Wall Basin 360



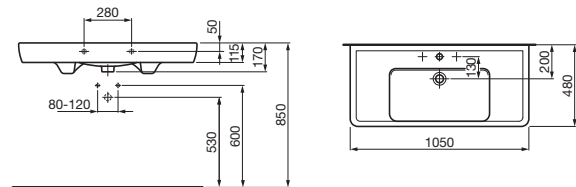
LAUFEN pro A Wall Basin 550



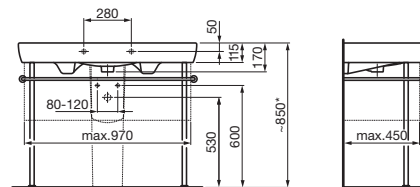
LAUFEN pro A Wall Basin 850



LAUFEN pro A Wall Basin 850 with Frame



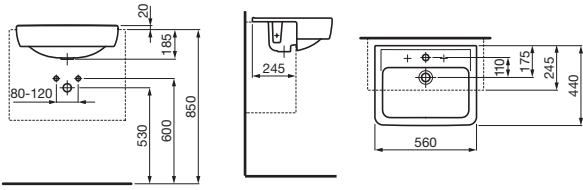
LAUFEN pro A Wall Basin 1050



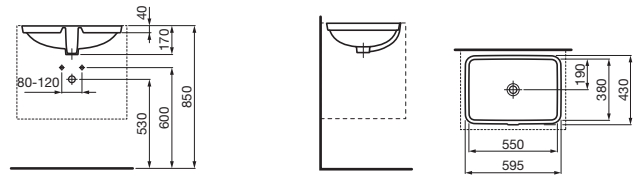
LAUFEN pro A Wall Basin 1050 with Frame

Plumbing measurements are a recommendation only and will vary based on trap and waste selection.

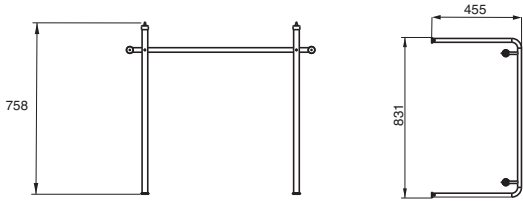
LAUFEN PRO A



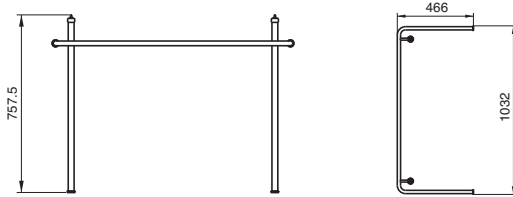
LAUFEN pro A Semi-Recessed Basin 560



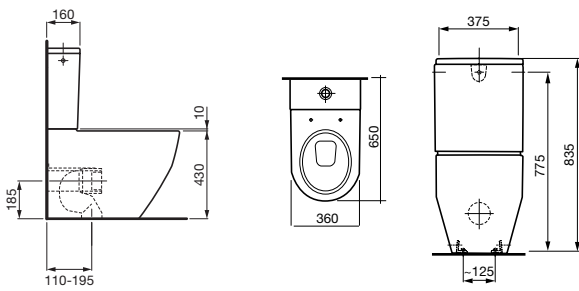
LAUFEN pro A Undercounter Basin 550



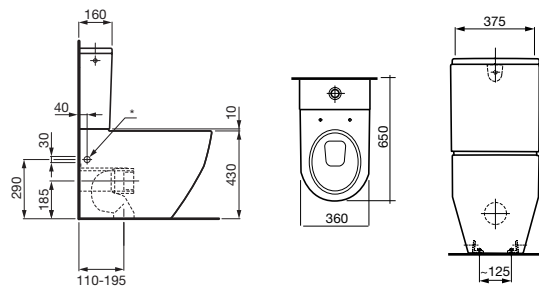
LAUFEN pro A Chrome Frame for 850 Wall Basin



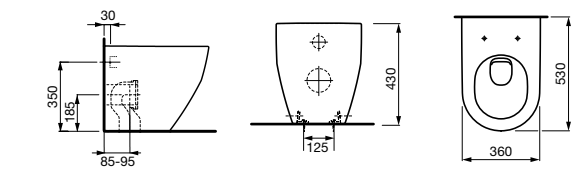
LAUFEN pro A Chrome Frame for 1050 Wall Basin



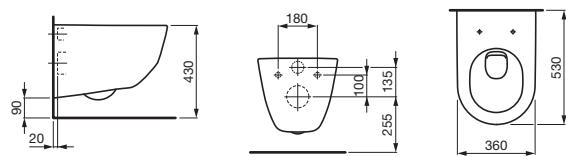
LAUFEN pro A Back To Wall Toilet Suite Back Inlet, S Trap: 110-195mm, P Trap: 185mm



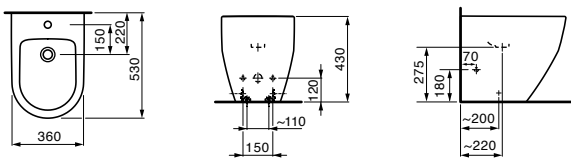
LAUFEN pro A Back To Wall Toilet Suite Bottom Inlet, S Trap: 110-195mm, P Trap: 185mm



LAUFEN pro A Back To Wall Pan, S Trap: 85-95mm, P Trap: 185mm



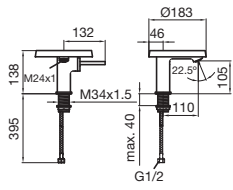
LAUFEN pro A Wall Hung Pan, P Trap: 255mm



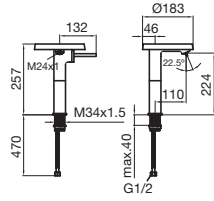
LAUFEN pro A Back To Wall Bidet S Trap: 85-95mm, P Trap: 185mm

Plumbing measurements are a recommendation only and will vary based on trap and waste selection.

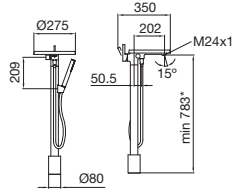
KARTELL BY LAUFEN



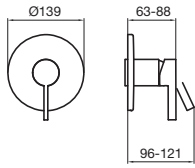
Kartell by Laufen Disc Basin Mixer



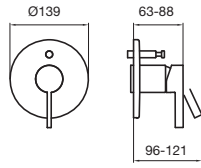
Kartell by Laufen Disc Extended Height Basin Mixer



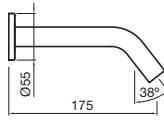
Kartell by Laufen Disc Bath Column with Handshower



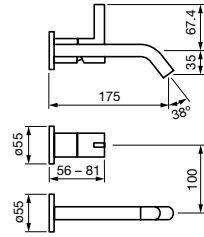
Kartell by Laufen Shower/Bath Mixer



Kartell by Laufen Shower/Bath Mixer with Diverter

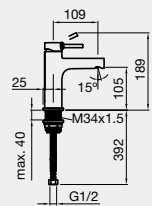


Kartell by Laufen Wall Outlet

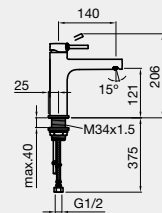


Kartell by Laufen Wall Basin Mixer Set

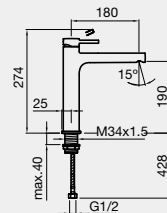
TWINPLUS



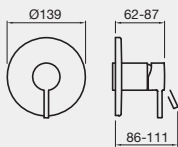
twinplus Basin Mixer



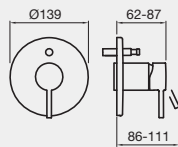
twinplus Mid Basin Mixer



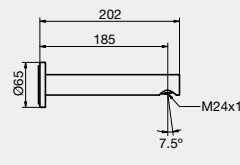
twinplus Extended Basin Mixer



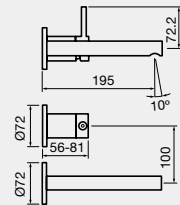
twinplus Shower/Bath Mixer



twinplus Shower/Bath Mixer with Diverter



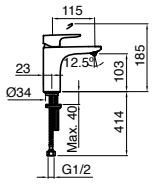
twinplus Wall Outlet



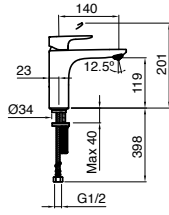
twinplus Wall Basin Mixer Set

Plumbing measurements are a recommendation only and will vary based on trap and waste selection.

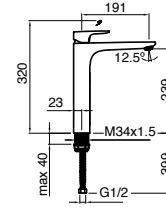
CITYPLUS



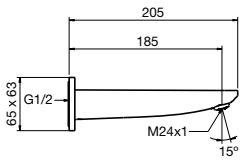
cityplus Basin Mixer



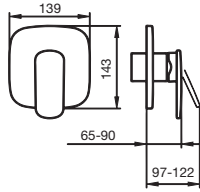
cityplus Mid Basin Mixer



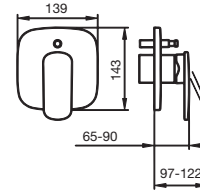
cityplus Extended Basin Mixer



cityplus Wall Outlet



cityplus Shower/Bath Mixer



cityplus Shower/Bath Mixer with Diverter

Bathroom Happiness™

Visit any one of our showrooms in Australia or New Zealand for all the latest products, concepts and inspiration to make your bathroom whatever you want it to be. And for the ultimate bathroom experience, go to one of our bathroom life™ stores where you will find the biggest range of leading international brands. For our nearest bathroom showroom:

AUS: visit www.reece.com.au **NZ:** visit www.reece.co.nz

Due to limitations in the printing process the colours in this brochure are a guide only. The manufacturer/distributor reserves the right to vary specifications or delete models from their range without prior notification. The manufacturer/distributor takes no responsibility for printing errors. LAUFEN furniture, toilets, baths, tapware and basins enjoy a 15 year product replacement warranty and a one year parts and labour warranty – Domestic use only.

V11 [BROCHURE CODE 9504098]

LAUFEN

