



# Cleaner, Greener, Lower-Carbon Aluminium for your project.

Introducing LocAL® —  
Locally extruded, lower-carbon aluminium.

**Aluminium is strong, lightweight and highly recyclable. But did you know that on average it takes 16.8 Kilograms CO<sub>2</sub>e to produce 1 Kilogram of primary aluminium?**

By choosing lower carbon aluminium, CO<sub>2</sub>e emissions can be more than halved giving you a cleaner, greener choice for your aluminium.

LocAL® Aluminium is locally extruded, lower-carbon aluminium for your projects in construction, engineering, marine, transport, defence, renewable energy or general fabrication industries.

## Locally extruded

Extruded in Australia by Capral Aluminium, Australia's largest aluminium extruder established in 1936.

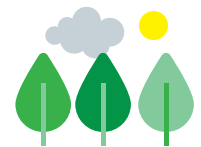
Capral is committed to Net Zero by 2050 and working actively on reducing Scope 1 and Scope 2 emissions.



## Low Carbon

Primary billet with certified CO<sub>2</sub>e content at or below\*:

- 8kgCO<sub>2</sub>e/1kgAL - LocAL Green
- 4kgCO<sub>2</sub>e/1kgAL - LocAL Super Green



## Aluminium

Aluminium Stewardship Initiative (ASI) certified smelter. Capral is currently a member of ASI actively working towards certification under ASI's Performance and Chain of Custody Standards.



\* Scope 1 and Scope 2 emissions ex smelter



**When you choose LocAl® you are making a cleaner, greener choice for your project, potentially halving the carbon emissions of the aluminium used in your project.**



**Certified CO2 Content**  
**8kg CO2e/1kgAL or below.**

- ASI certified smelter



**Certified CO2 Content**  
**4kg CO2e/1kgAL or below.**

- ASI certified smelter

**Global Average**



## Why Choose LocAl?

The carbon footprint of LocAl® Green is up to 50% less than the global average for primary aluminium production\* (ex smelter based on Scope 1 and Scope 2 emissions). Whilst LocAl® Super Green boasts one of the lowest carbon emissions for primary aluminium currently available and is 75% lower than the global average for primary aluminium production.

Reducing carbon emissions from your products is important because it **mitigates the effects of global climate change, improves public health, boosts the global economy, and maintains biodiversity.**

When we cut carbon emissions, we help ensure cleaner air, water, and food for our generation and for generations yet to come.

Choosing to use LocAl® Aluminium as part of a responsible procurement strategy for your business will positively impact your organisation's environmental impact and our climate.



**Find out more about LocAl® and choosing lower-carbon aluminium for your project, visit: [lowcarbonaluminium.com.au](http://lowcarbonaluminium.com.au)**

On the path to a  
better tomorrow.

