



# MONTECARLO

## TECHNICAL ASPECT

Construction: Tufted Cutpile 1/8"  
Composition: 90% Wool 10% Polyester  
Secondary Backing: Synthetic Jute  
Stitches per m<sup>2</sup>: 126000m<sup>2</sup>  
Pile Height: 6.3mm  
Total Height: 9.0mm  
Pile Weight: 1.250g/m<sup>2</sup>  
Total Weight: 2.200g/m<sup>2</sup>  
Roll Width: 400cm

Use: High Residential/ Medium Commercial

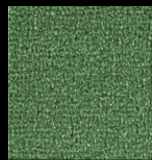


Level 1, 68 Sophia Street  
Surry Hills, NSW 2010

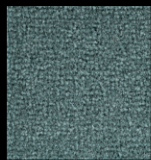
1800 239 237 (1800 2FYBER)  
info@fyber.com.au  
@fyber\_flooring

www.fyber.com.au

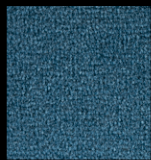
# FYBER



79 APPLE



65 AQUAMARINE



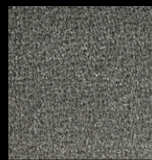
25 ARCTIC



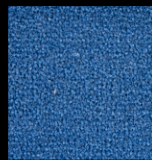
108 ARDESIA



80 ARGENT



109 AVENA



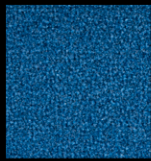
26 AZURE



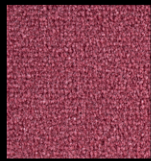
44 BEECH



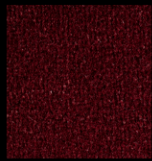
105 BISONTE



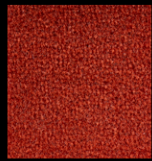
27 BLUEBIRD



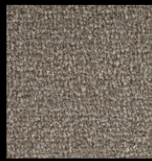
4 BLUSH



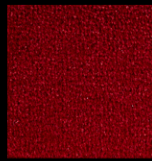
3 BORDEAUX



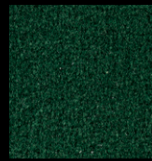
53 BURNT ORANGE



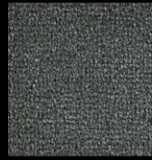
104 CARDAMONO



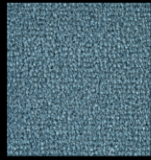
1 CARDINAL



75 CEDAR



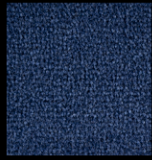
83 CHARCOAL



21 CHINA BLUE



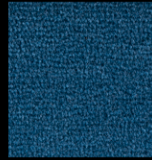
103 CHOCO



32 COBALT



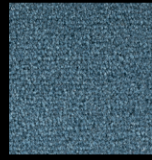
5 CORAL



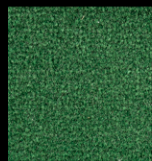
28 CORNFLOUR



47 CREAM



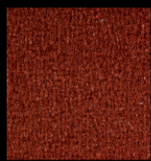
24 DENIM



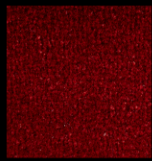
95 EVERGLADES



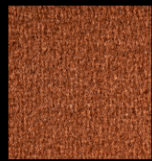
106 FANGO



55 FIREFLY



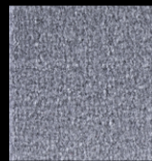
54 FLAME



59 GINGER



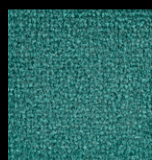
19 HARVEST



81 IRIS



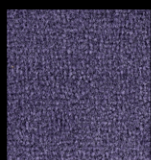
85 JET



99 LAGOON



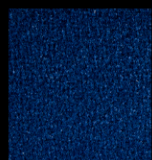
101 LATTE



88 LILAC



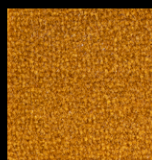
39 LINEN



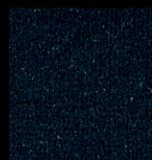
33 MIDNIGHT



56 MOKA



20 MUSTARD



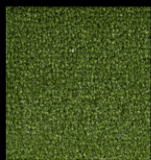
35 NAVY



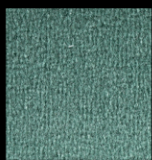
45 NOUGAT



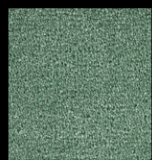
36 OATMEAL



77 OLIVE



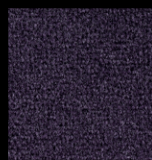
68 ONYX



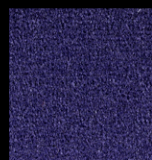
64 OPAL



43 ORCHID



78 PARMA



82 PURPLE



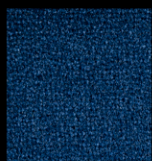
107 RAFIA



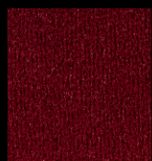
10 RASPBERRY



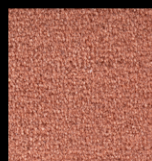
102 RISO



34 ROYAL



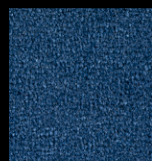
6 RUBY



92 SALMON



15 SAND



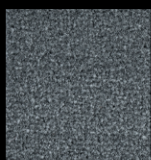
98 SAPPHIRE



9 SHELL PINK



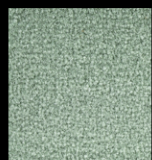
86 SILVER



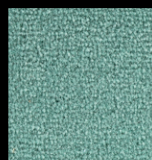
87 SMOKE



50 SNOW



72 SOFTPINE



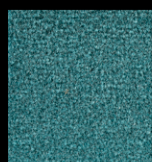
76 SPEARMINT



37 STONE



16 STRAW



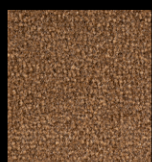
93 TURQUOISE



13 VANILLA



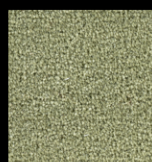
71 VOLCANO



52 WALNUT



46 WARM BEIGE



63 WILLOW

Level 1, 68 Sophia Street  
Surry Hills, NSW 2010

1800 239 237 (1800 2FYBER)  
info@fyber.com.au  
@fyber\_flooring

www.fyber.com.au

FYBER