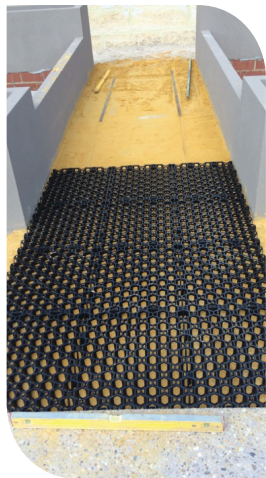
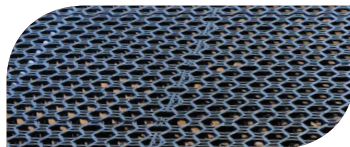


Deck Cell



Congratulations, you've just discovered the world's easiest sub-frame system. If you can put Lego together, then you can build a sub-frame using **DeckCell**.

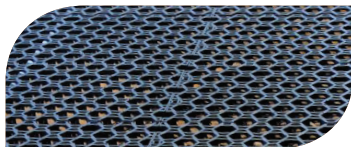
- Save \$\$\$** DIY no expensive trades required.
- Save \$\$\$** No need to waste time and effort lifting up your old pavers and disposing of them.
- Save \$\$\$** Very fast and easy to install.
- Save \$\$\$** No need for specialist tools and equipment such as welders.

DeckCell is suitable when the area to be decked is concrete pads, pavers, bricks and compacted sand

Easy installation: Time is money and as such you will be saving again as **DeckCell** is very fast and easy to install compared to a traditional timber or steel sub-frame.



Deck Cell



Why wait? It can take weeks or even months to get an installer onsite but as **DeckCell** is so easy to do yourself, you can get your new deck right away.

Quality: **DeckCell** is practically indestructible and will never degrade or fail.

Manufactured from recycled, hard-wearing polypropylene, **DeckCell** is indefinitely resistant to chemical and bacterial attack and degradation.

DeckCell has a crush strength of 148 t/m² (149kPa) meaning that it could easily take the weight of a vehicle.

Size:
(W)500mm x (L)600mm x (H)50mm

Will never rot, rust or degrade in any way. Only requires 74mm (compared to 150 minimum for traditional sub-frames)

