



---

**Designer Jet<sup>®</sup> Sheet**

OCEANIC  
COLLECTION



# CONTENTS

4. Oceanic Dreaming

5. Take 3 for the Sea

6. About Designer Jet®

8. Designs



# Oceanic Dreaming

Capture the moods of Oceania: the Tasman and Coral Seas. Evoke the brackish fathoms, the glassy expansiveness, whitewashed rise and fall, dappled depths, the silver surface moon path, and the transparent shallows.

The Oceanic Collection is a design-led offering, influenced by the biophilic design concept; bringing the natural environment inside, both directly and implied. Our new commercial carpet range imagines the macro, and overall continuity of the oceans. Marbled coral reefs, stormy seas, sand stretches, teeming tropical fish, craggy coastlines and the myriad of marine life.

Zoom in on the micro spaces: seafloor shadows, tidepool textures, swaying kelp fronds, riptide flow and reflections. There's beauty in detail; crosshatched seaweed, dots and lines on a sea urchin, folded limestone corals, round fish roe, hexagonal sea turtle shell, radial lines on sea stars and the tonal saturation of the sea surface.

Pull back to the topographical: cerulean gradients of the abyss, the density of coral shelves, and the sandy relief. Feature the systems, colours and textures of the Great Barrier Reef; adaptive patterns and compositions, contrast and texture.



Help us be part of the plastic pollution solution and create healthy oceans that through education, inspire participation and the building of a global movement.



## Take 3 for the Sea

The muse for our Oceanic Collection, and home to such diverse life, we want to actively participate in keeping our oceans free from plastic pollution. The organisation, Take 3 for the Sea, champions individual action; a simple solution for a complex problem. Think of it as a ripple effect – each time you leave the beach or waterway – take 3 pieces of rubbish with you.

As an Official Supporter, we want to do our bit for conserving our ocean environments. We make an annual donation to Take 3 for the Sea from the proceeds of the Oceanic Collection, supporting ocean clean-ups and education programs.



# Designer Jet®

The first in the southern hemisphere, Designer Jet® is a world class custom carpet technology for creating an infinite array of colours and bespoke designs you would never have thought possible in a carpet.

At the forefront of custom carpet creation, Designer Jet® works by taking any striking pattern, drawing or image and using precision engineering to inject the dye into the carpet, offering a flexible, creative and performance driven solution for your next project.

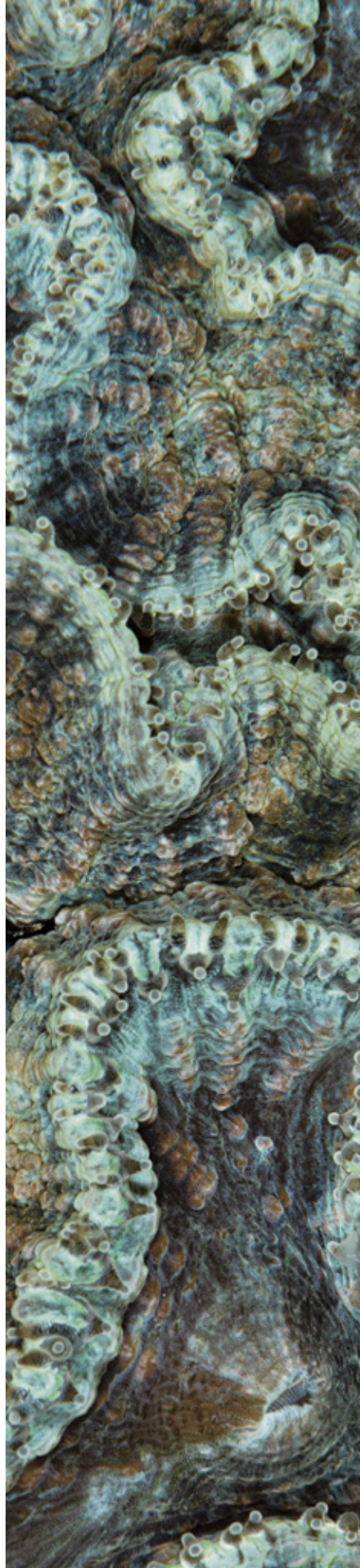
Available in a multitude of formats, the patterns with in this brochure are perfect for Designer Jet® sheet, our 1.96m wide carpet rolls. With short lead times and small minimum order quantities, these rolls are tailor made for corridor installations, are easier to manage and have less wastage than traditional broadloom carpet.

## FLEXIBILITY

Designer Jet® gives you the freedom to select your surface texture (velvet cut pile, textured loop pile or sculptured loop pile), product size (tiles, planks or sheet) and backing type depending on project requirements.

## PERFORMANCE & DURABILITY

All Designer Jet® carpets are independently rated contract heavy or extra heavy duty under the Carpet Institute of Australia's, Australian Carpet Classification Scheme.



## BESPOKE CAPABILITY

With virtually limitless colour and design capability, let us make a carpet as unique as your project's interior.

## FAST TURNAROUND

Our in-house design team can help create your vision and the carpet can be produced in as little as 3 weeks from order\*.

## MADE IN AUSTRALIA

Our Designer Jet® products are designed and manufactured in Australia and come with knowledgeable, local service.

## SUSTAINABILITY

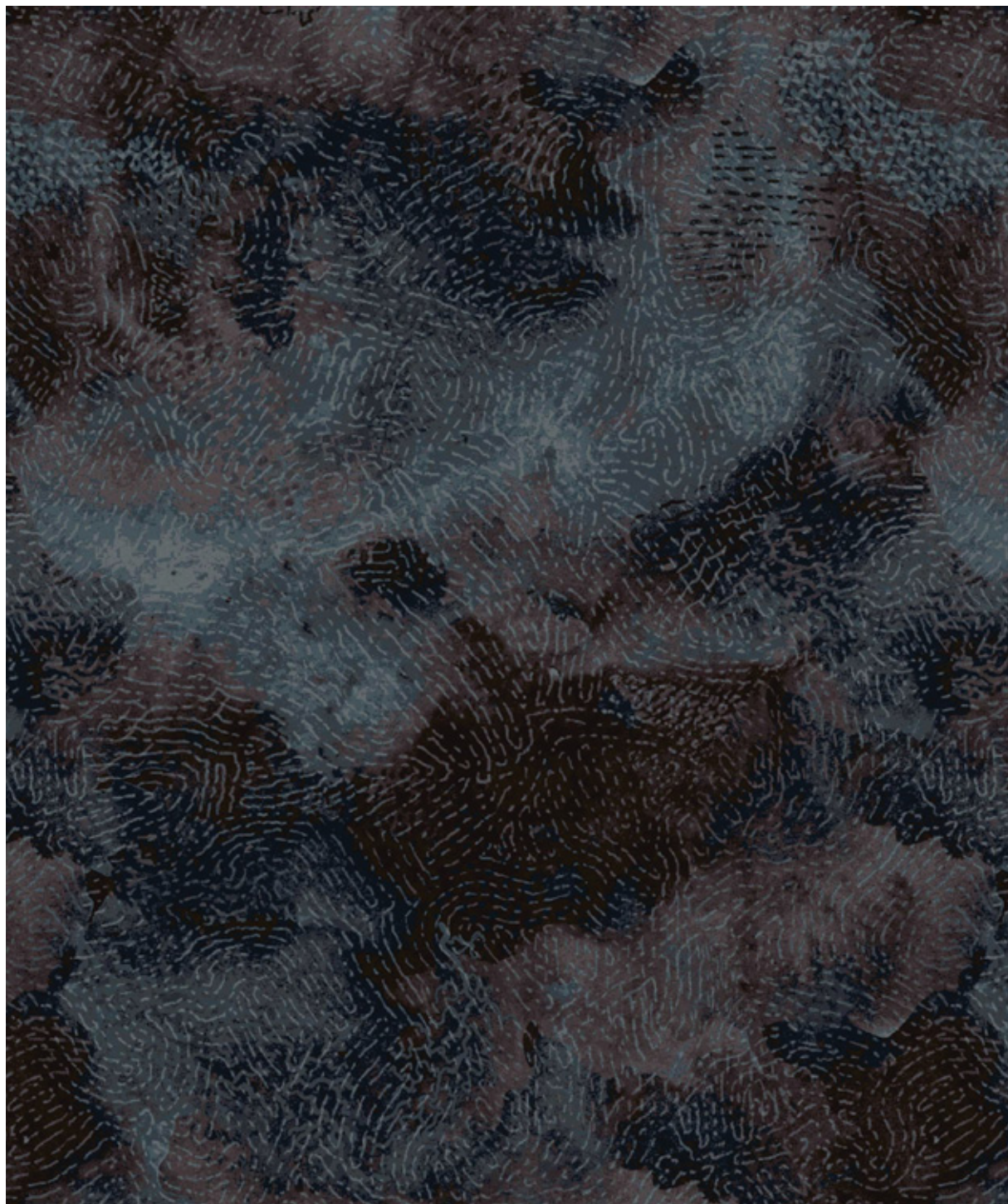
As part of our commitment to product transparency, Designer Jet® sheet is Declare Red List Free. The Designer Jet® process uses less water, chemicals and dyes than other carpet production methods and any carpet waste is recycled through our 3R program, diverting it from landfill.

## COST EFFECTIVE

With zero design fees, smaller minimum orders and a price to suit any budget, Designer Jet® makes bespoke carpet a reality for any commercial interior.

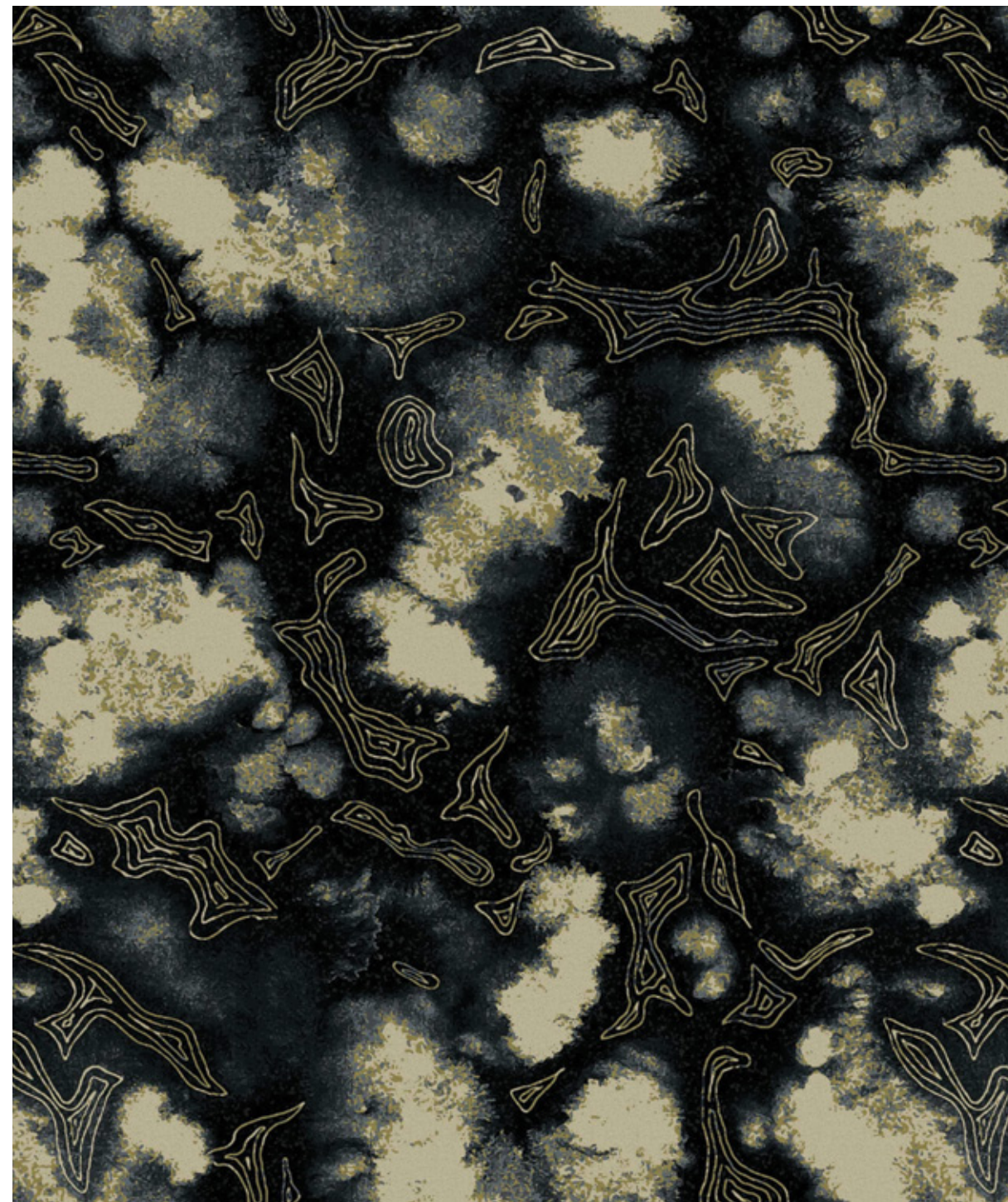
\*Please allow longer lead times for large or complex projects.





775 BALLINA

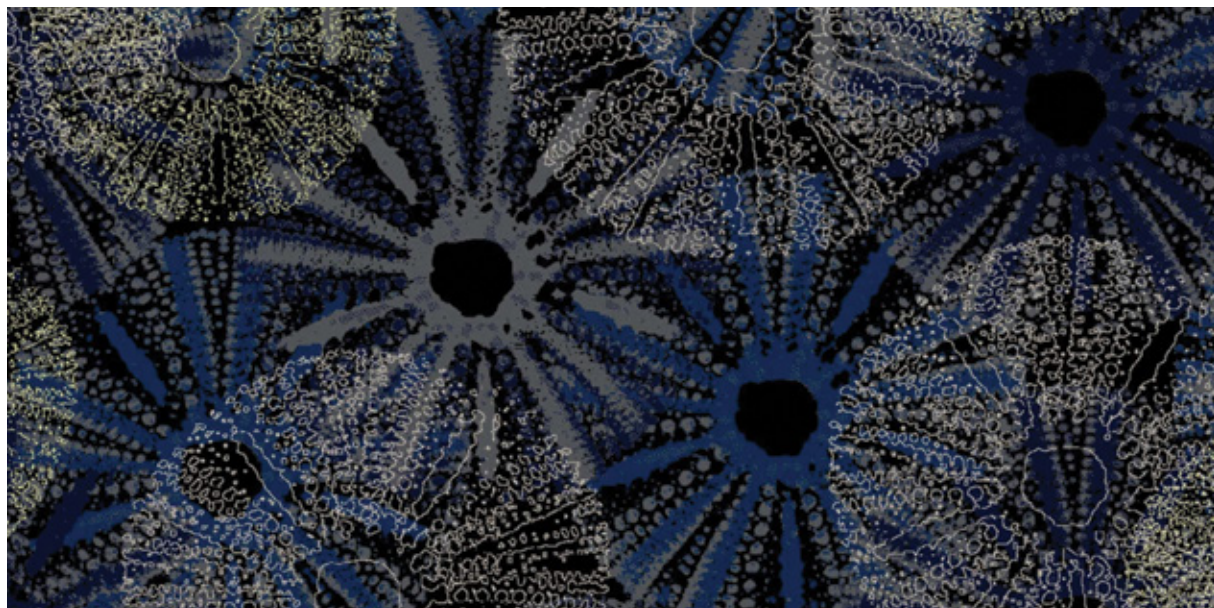
Aerial views of our reefs provide a beautiful base of organic tones and textures. Blended with an overlay of the distinctive tracks found within the inhabiting brain coral species adds interest to the floor.



785 LINDEMAN

Viewed from above in the dark of the night, the combination of a reefs glow and its moonlight reflections bring peace and tranquility.





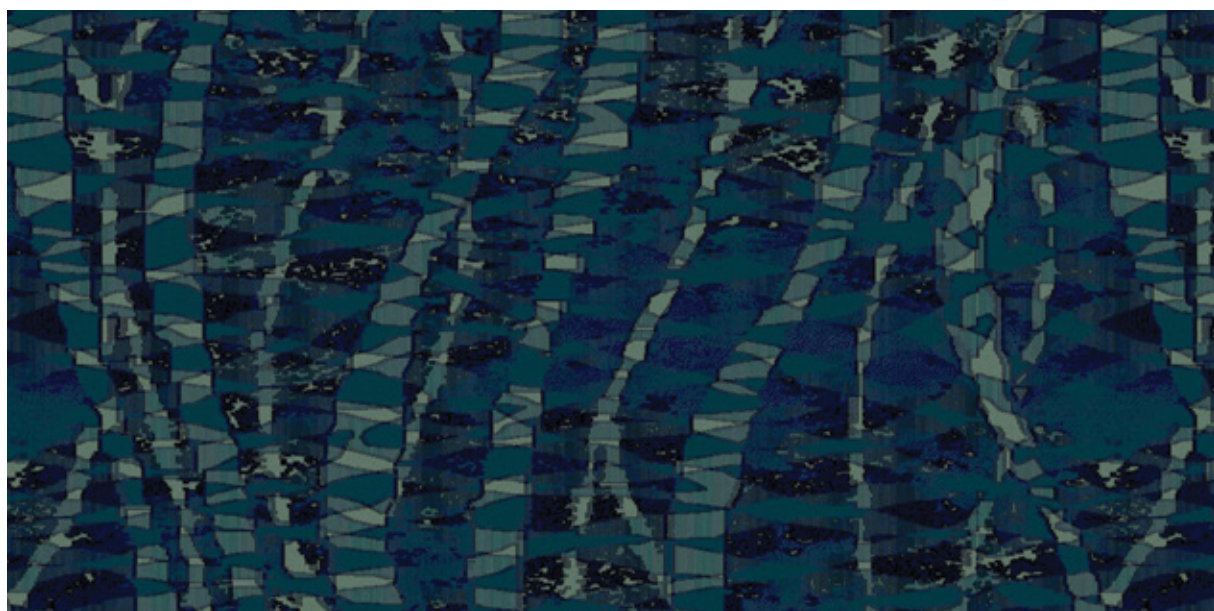
880 URCHIN

A prolific element on the sea bed, sea urchins and other echinoderms live in a range of habitats, from the tidal surf to the deepest part of the ocean. Their powers of regeneration often admired in the marine community.



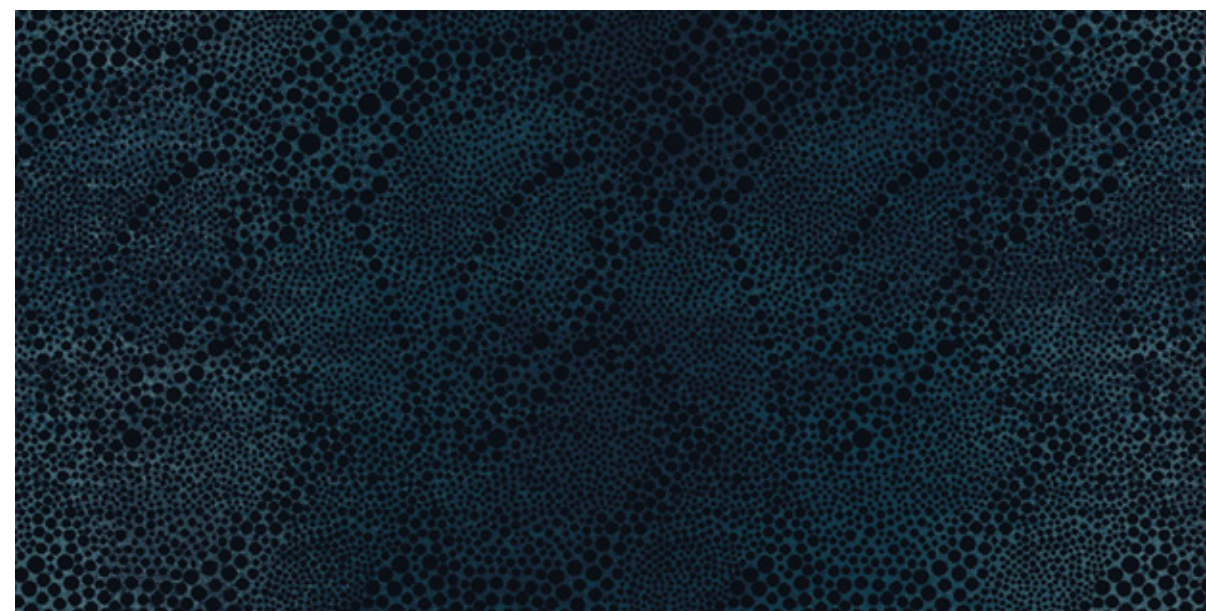
870 SAMPA

Coral can take on many different shapes and forms, often resembling plants and foliage. Interesting fact; approximately three quarters of the world's coral species can be found on the Great Barrier Reef.



860 AQUARIA

Lapping water gives movement to all that is below the surface, providing a beautiful yet subtle flow on the floor.



890 ATOMIC

Bubbles of oxygen from the superabundance of under water life and the skin divers that frequent our reefs provide a playful pattern designed for any interior.



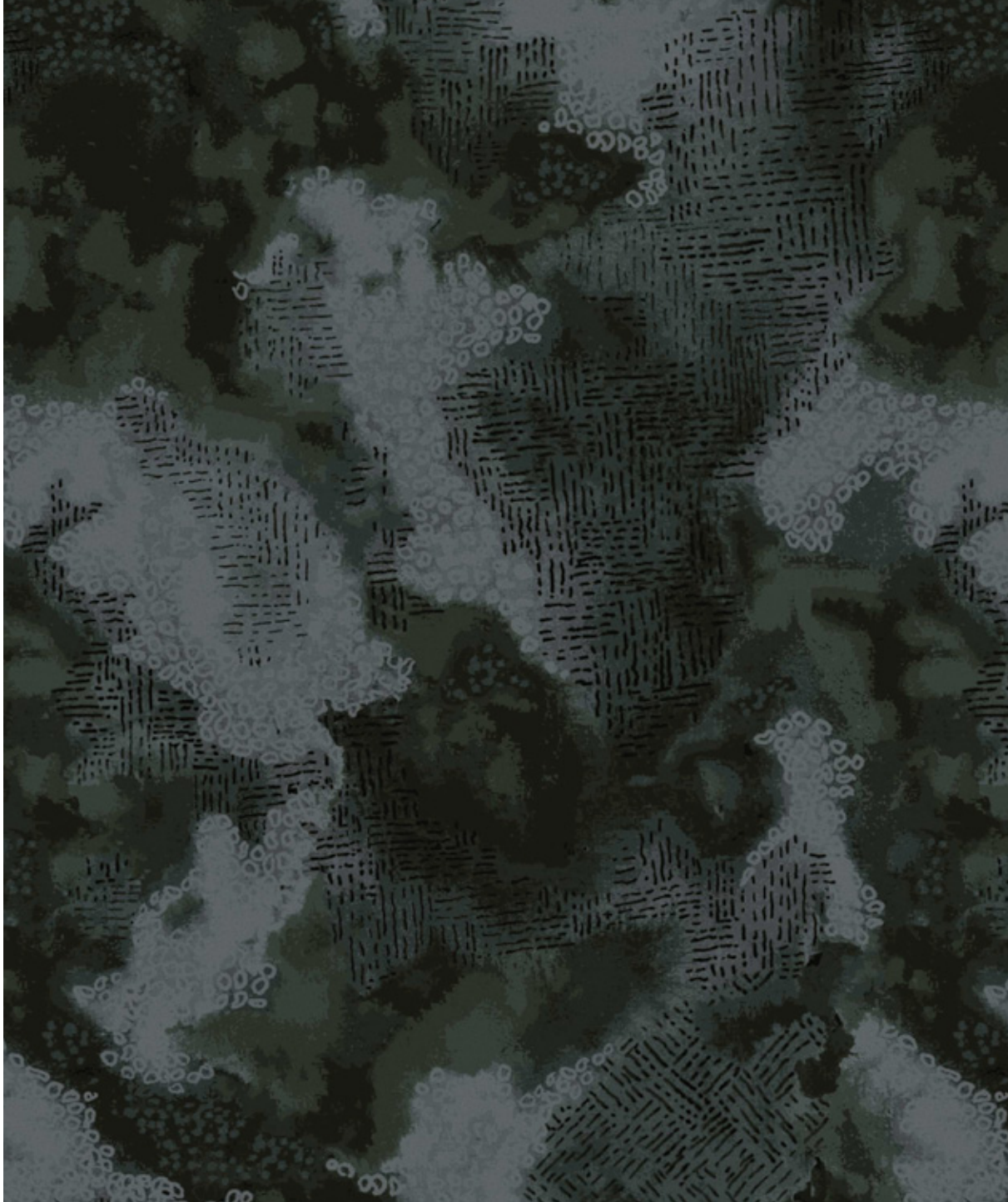


860  
AQUARIA

---

# Oceanic Collection





960 BRAMPTON

An aquatic arrangement of the shapes, textures and patterns found within our reefs.



850 PEARLSA

An alternative colour option for the Ballina design within this collection, Pearlsa features the same organic tones and textures found in the oceans inhabiting brain coral.





# 850 PEARLSA





590 ZOOKS

A further development built on the Sampa pattern in this collection, this design adds a layer emulating the fascinating distortions found underwater.



780 BLACKFISH

A mesmerising design resembling a school or shoal of fish, sticking together for hydrodynamic efficiency, defence against predators or simply mateship.



790 ANGEL

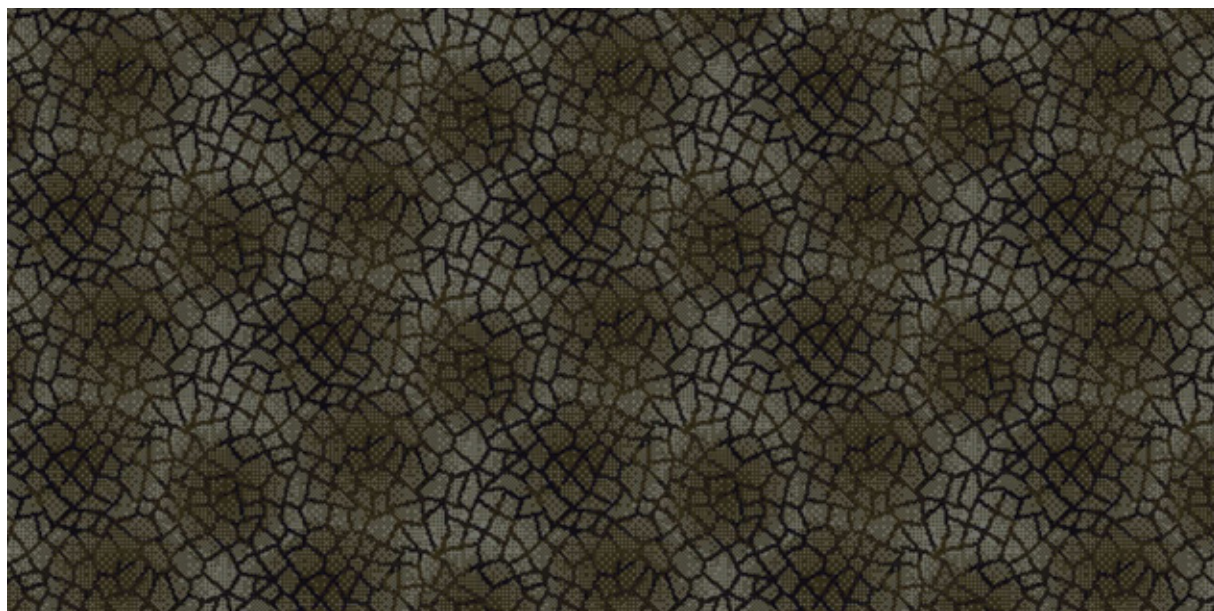
The intriguing Angelfish is well known for its brilliant colours and striking patterns. Remove the colour and the alluring pattern formation still holds the purpose of deceiving predators.





560 TURTLE

The amazing skin of the sea turtle makes a striking natural design. These highly aquatic animals can be found basking on coastal beaches with a preference for warm marine environments.



580 SURFACE

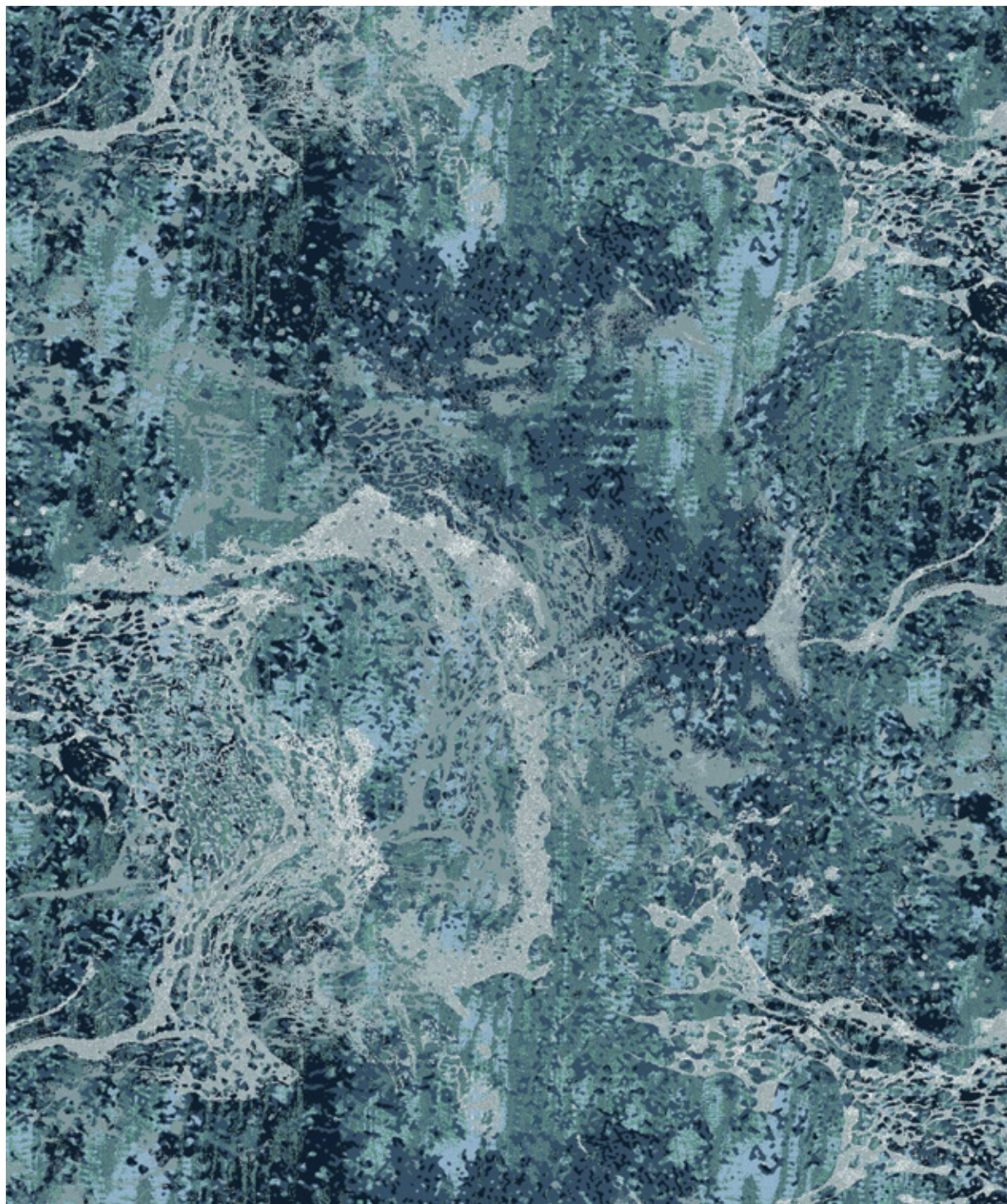
The intricate study of coral reveals a myriad of patterns. Zoom in on the texture and you'll be hypnotised by the natural design of this pattern.



740 SEA STAR

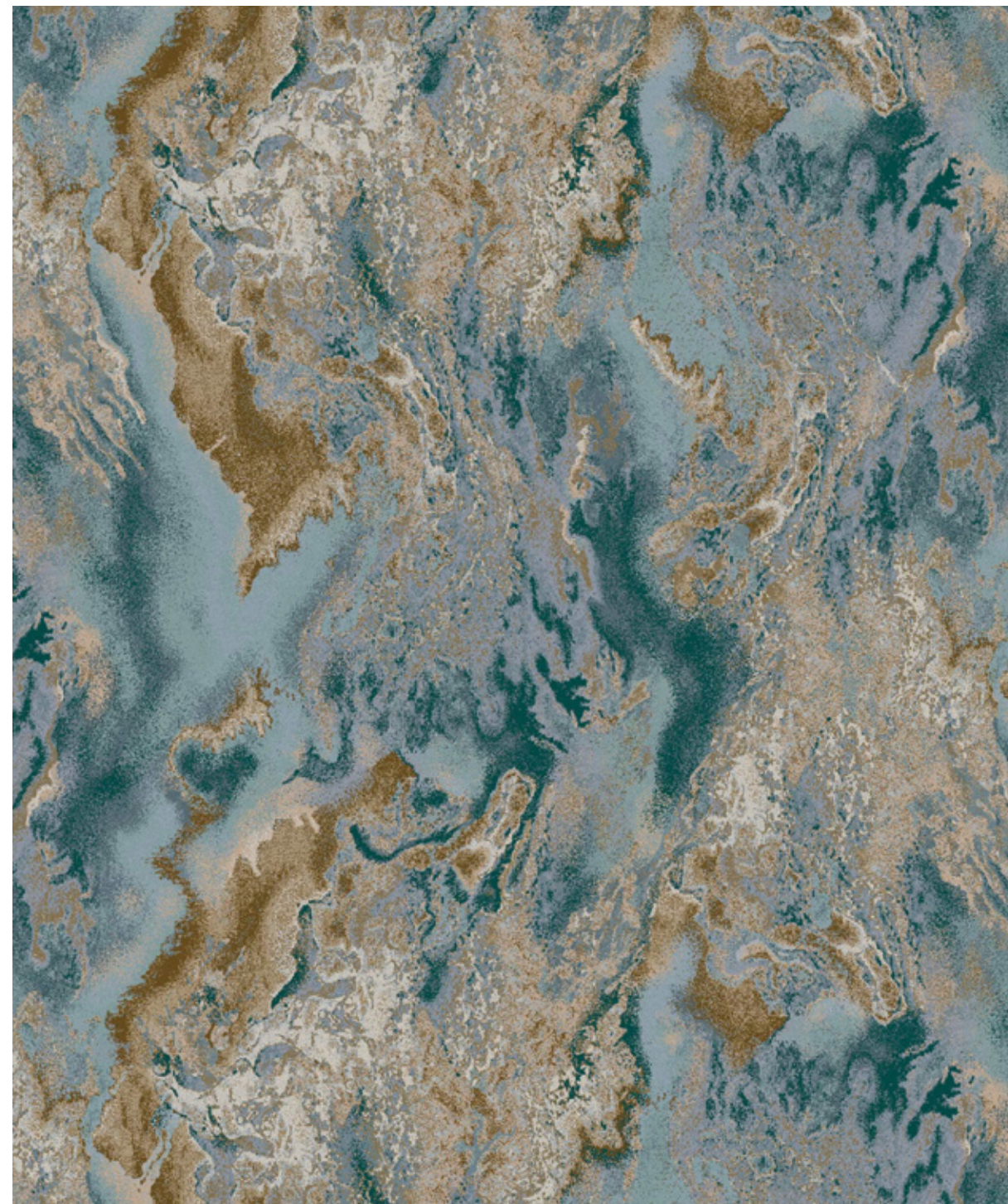
Another pattern inspired by the echinoderms that inhabit our seas, this overlapping sea star design is simple and subtle. Their novel body shape provides a delightful design for the floor.





## 840 BACKWASH

The ebb and flow of our tidal waters washing over rocks not only creates a natural vision for pattern, but brings a sense of calm and relaxation.



## 830 DAYDREAM

The vast expanse of our coral reefs can be seen from far above, making for great satellite imagery from space. Its gracious forms suggest movement. Contrasting depths of the ocean bring harmonious tones of cool blues. These elements all come together in a balanced textural composition.



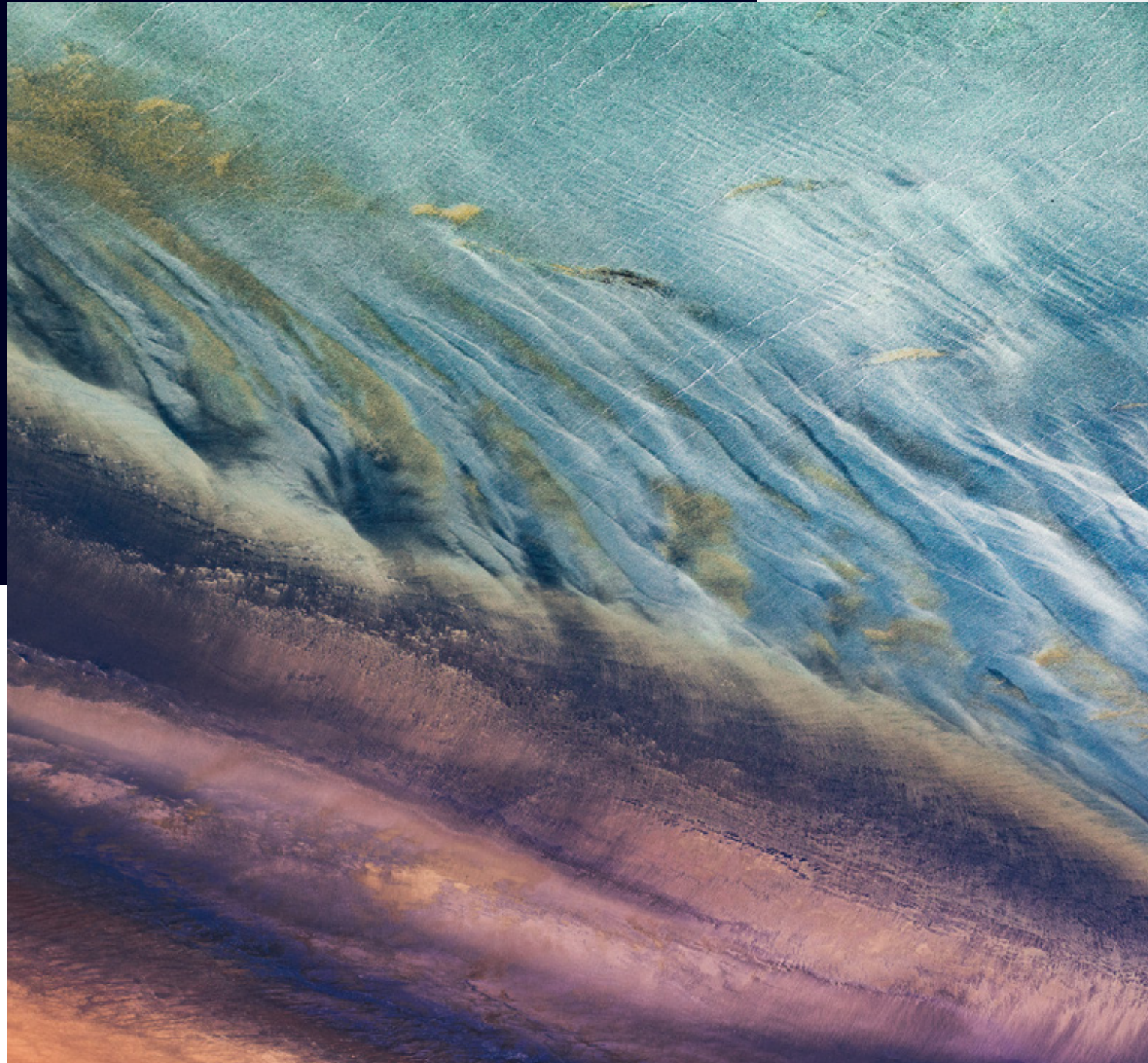


830  
DAYDREAM



# OCEANIC COLLECTION

## Designer Jet® Sheet



### Technical Specifications

<b>Product Type</b>	Designer Jet® Carpet Roll
<b>Country of Origin</b>	Australia
<b>Description</b>	Patterned Cut Pile
<b>Colours</b>	16 Standard
<b>Yarn</b>	100% BCF Yarn Dyed Nylon
<b>Gauge</b>	39.4/10cm (1/10th Gauge)
<b>Product Thickness</b>	7mm (+/- 1.0mm)
<b>Pile Weight</b>	576g/m <sup>2</sup> / 17oz/yd <sup>2</sup> (+/- 5%)
<b>Backing Structure</b>	Action Bac®
<b>Product Size</b>	1.96m Wide Roll
<b>Available Options†</b>	500mm x 500mm Tile, 250mm x 1,000mm Plank, Textured Loop Pile, Sculptured Loop Pile, Quick Comfort™ (Cushion Backed), Colour and Design Customisation
<b>Installation Method</b>	Direct Stick Recommended

### Performance

<b>Anti-static</b>	AATCC 134 <3.5 Kilovolts at 21°C & 20% Relative Humidity
<b>Flammability#</b>	CRF 8.4kW/m <sup>2</sup> (Direct Stick) Smoke Value 39% Minutes
<b>Colourfast to Light</b>	5 - 6
<b>Light Reflectance Values</b>	Available on Request
<b>Stain Resistance</b>	Stain Warden*
<b>Biocontaminant Control</b>	Bioshield® Antimicrobial Control
<b>ACCS Rating#</b>	Contract Extra Heavy Duty & Stairs Certificate #20033
<b>Australian Warranty*</b>	10 Years Available on Request
<b>New Zealand Warranty</b>	Feltex provides comprehensive warranties for our carpets. All warranties are issued on a project by project basis. Please contact us to discuss your requirements further.

### Sustainability

<b>PVC Minimisation</b>	PVC Free
<b>Indoor Air Quality#</b>	Green Building Council Compliant for VOC Emission Rate Limits
<b>Product Stewardship</b>	This product is recyclable and qualifies for takeback at the end of life under the GH Commercial product stewardship program
<b>Green Star</b>	Environmental Certification Scheme (ECS) Level 4 Maximum points - Certification #20033
<b>Product Transparency</b>	Declare Red List Free
<b>Accreditation</b>	Manufactured under a quality, environmental and health and safety system certified and complying with ISO9001, ISO14001 and AS4801 by an accredited certification body.



AUSTRALIAN  
MADE



Manufactured under a quality, health and safety, and environmental system certified and complying with ISO 9001, AS 4801 and ISO 14001 by accredited certification bodies.

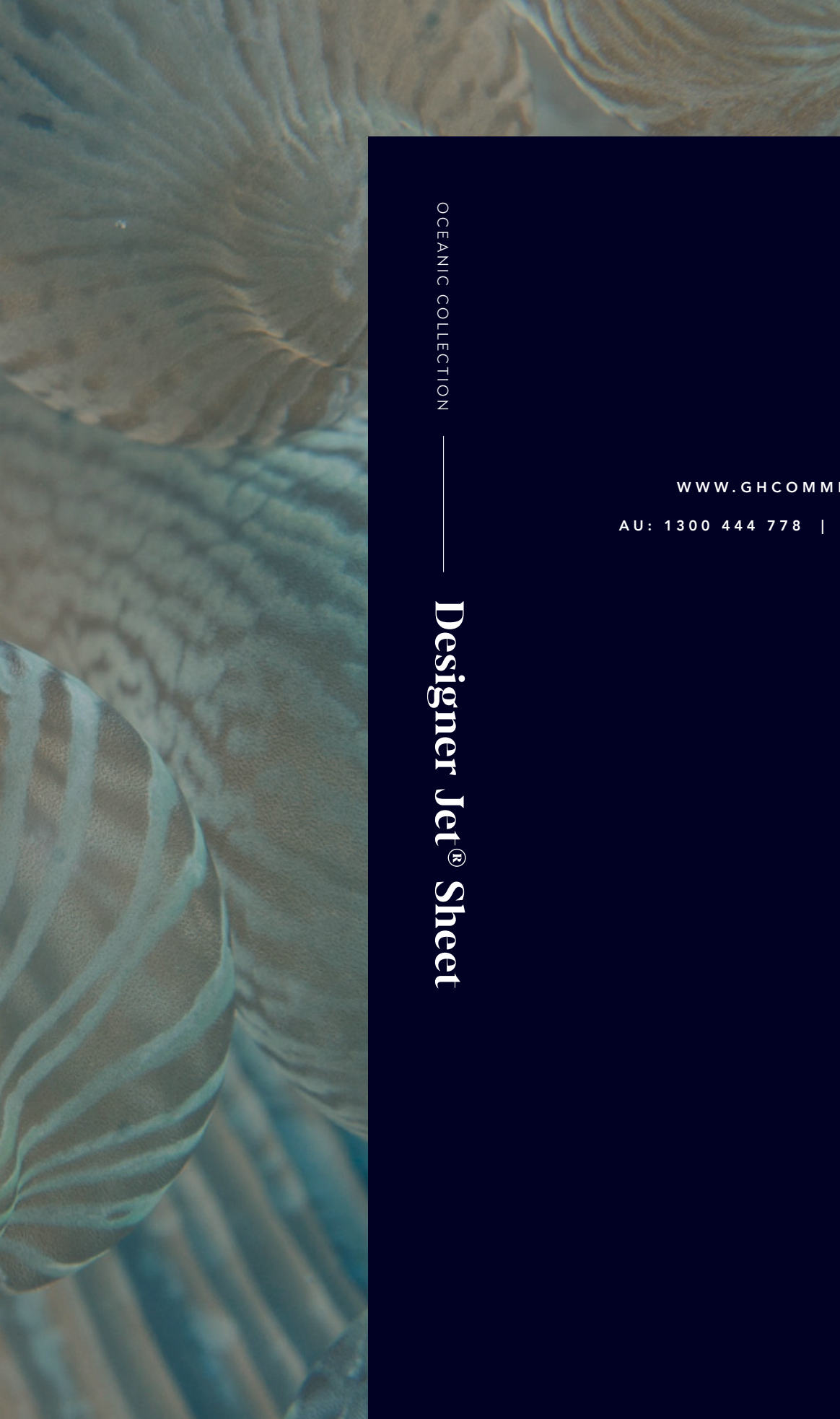
Declare.



green building council australia  
MEMBER

#Test results are available on request. Specifications and colourations are subject to manufacturing tolerances. As part of the GH Commercial continuous improvement program, GH Commercial reserves the right to change the specifications of or delete colours of this product without notice. All GH Commercial carpets must be installed in accordance with the relevant Australian and/or New Zealand applicable standards (latest AS2455 Parts 1 & 2) and the GH Commercial Carpet Installation Instructions. While all care is taken, product images may vary in colour due to possible printing process variations. Images do not seek to duplicate the exact visual appearance, but serve merely as a guide or point of reference. \*Minimum order quantity may apply. Contact your GH Commercial Account Manager for information. \*This warranty applies to 1.96m wide carpet within the Oceanic Collection and is in addition to any rights consumers may have under Australian consumer laws. Terms and conditions apply – for full information in respect to the scope of the warranty please contact your GH Commercial Account Manager or our Head Office.





OCEANIC COLLECTION

Designer Jet® Sheet

[WWW.GHCOMMERCIAL.COM](http://WWW.GHCOMMERCIAL.COM)

AU: 1300 444 778 | NZ: 0800 500 210