



Woven Carpet

OCEANIC
COLLECTION

CONTENTS

4. Oceanic Dreaming

5. Take 3 for the Sea

6. About Woven Carpet

8. Designs

Oceanic Dreaming

Capture the moods of Oceania: the Tasman and Coral Seas. Evoke the brackish fathoms, the glassy expansiveness, whitewashed rise and fall, dappled depths, the silver surface moon path, and the transparent shallows.

The Oceanic Collection is a design-led offering, influenced by the biophilic design concept; bringing the natural environment inside, both directly and implied. Our new commercial carpet range imagines the macro, and overall continuity of the oceans. Marbled coral reefs, stormy seas, sand stretches, teeming tropical fish, craggy coastlines and the myriad of marine life.

Zoom in on the micro spaces: seafloor shadows, tidepool textures, swaying kelp fronds, riptide flow and reflections. There's beauty in detail; crosshatched seaweed, dots and lines on a sea urchin, folded limestone corals, round fish roe, hexagonal sea turtle shell, radial lines on sea stars and the tonal saturation of the sea surface.

Pull back to the topographical: cerulean gradients of the abyss, the density of coral shelves, and the sandy relief. Feature the systems, colours and textures of the Great Barrier Reef; adaptive patterns and compositions, contrast and texture.



Help us be part of the plastic pollution solution and create healthy oceans that through education, inspire participation and the building of a global movement.



Take 3 for the Sea

The muse for our Oceanic Collection, and home to such diverse life, we want to actively participate in keeping our oceans free from plastic pollution. The organisation, Take 3 for the Sea, champions individual action; a simple solution for a complex problem. Think of it as a ripple effect – each time you leave the beach or waterway – take 3 pieces of rubbish with you.

As an Official Supporter, we want to do our bit for conserving our ocean environments. We make an annual donation to Take 3 for the Sea from the proceeds of the Oceanic Collection, supporting ocean clean-ups and education programs.

Woven Carpet

Traditional weaving meets cutting-edge technology. Our woven carpets are made from a rich, premium, wool blend fibre, bringing character and quality to your project.

For luxe commercial interiors, this collection of woven carpets feature a combination of sophisticated and straightforward designs. Naturally durable, this high-end carpet retains a near-new look, and the dense pile gives a lush underfoot feel.



LUXURY

Made from a premium wool blend, our woven carpet is designed to add a touch of luxury to a space. Perfect for high end interiors wanting a real wow factor.



PERFORMANCE

Wool is a naturally resilient fibre. Combine that with the dense construction of our woven carpet and you have a floor fit for any commercial space.



QUALITY

Our woven carpet is synonymous with quality. Produced using old-world craftsmanship methods combined with modern technology, the pile and backing are interwoven, locking each yarn into place for extra stability.



FLEXIBILITY

Available in 4 different qualities depending on the foot traffic requirements of your project. With options for spaces with lighter foot traffic, like hotel guestrooms, through to the busiest of interiors such as hotel corridors or restaurants.



FAST TRACK®

Need a woven carpet fast? Our Fast Track® program delivers your carpet in 8 weeks from the time of order* and with only a minimum order quantity of 20 lineal metres. Visit ghcommercial.com to learn more about Fast Track®.



BESPOKE CAPABILITY

Select from one of our existing designs or let your imagination run wild and create your own exclusive woven carpet. A custom carpet is perfect for those venues wanting to stand out from the crowd.



COMFORT

The thick pile and high density of our woven carpet offers exceptional comfort underfoot, perfect for the tired, weary feet of visitors and building occupants alike.



*Please allow longer lead times for large or complex projects.

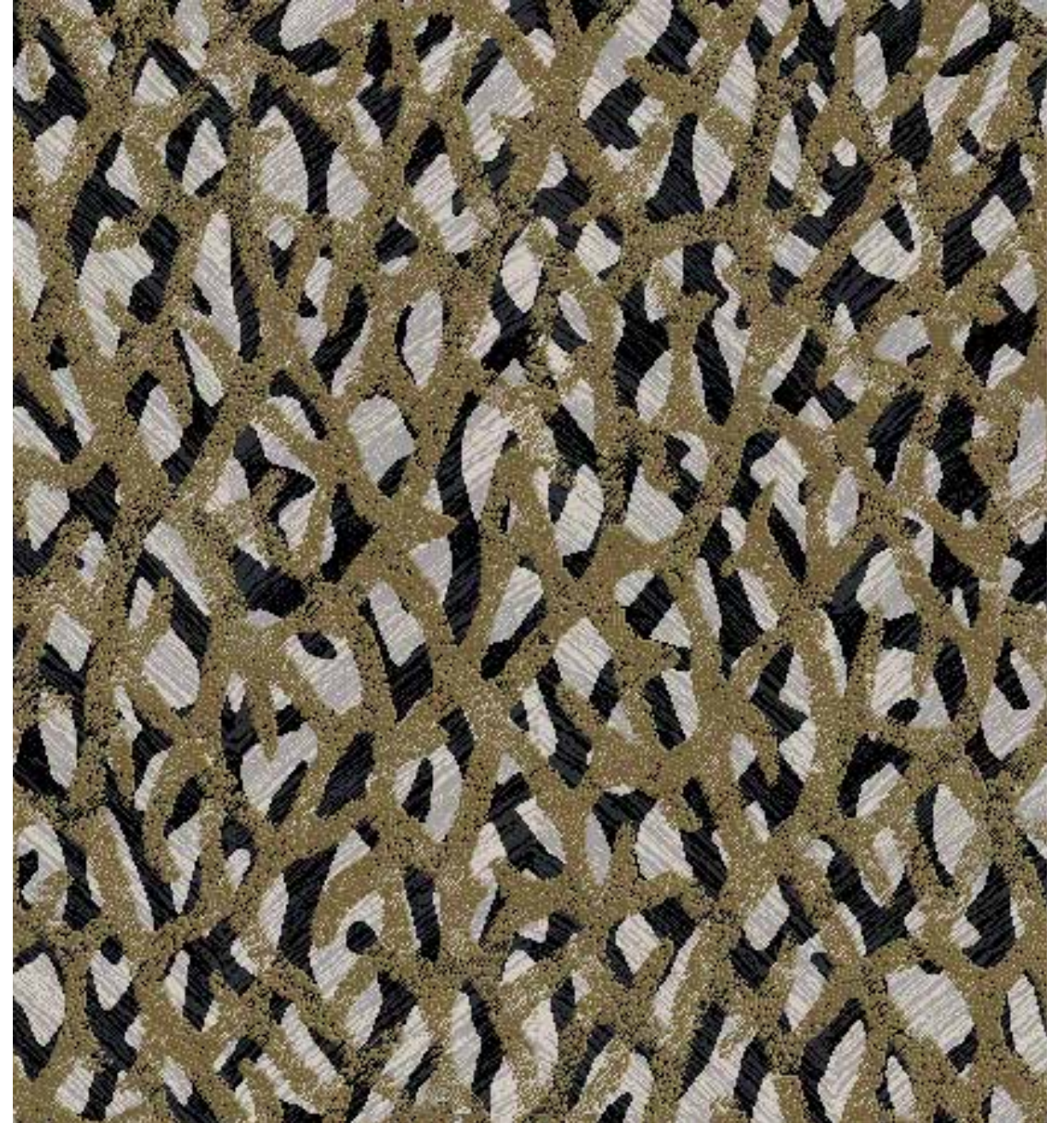


MATCH; HALF DROP | 365.76CM (W) X 254CM (L)



540 COMO

A more neutral derivative of the Ningaloo pattern from this collection (see page 20), one half almost reflects the other, creating an intriguing design.

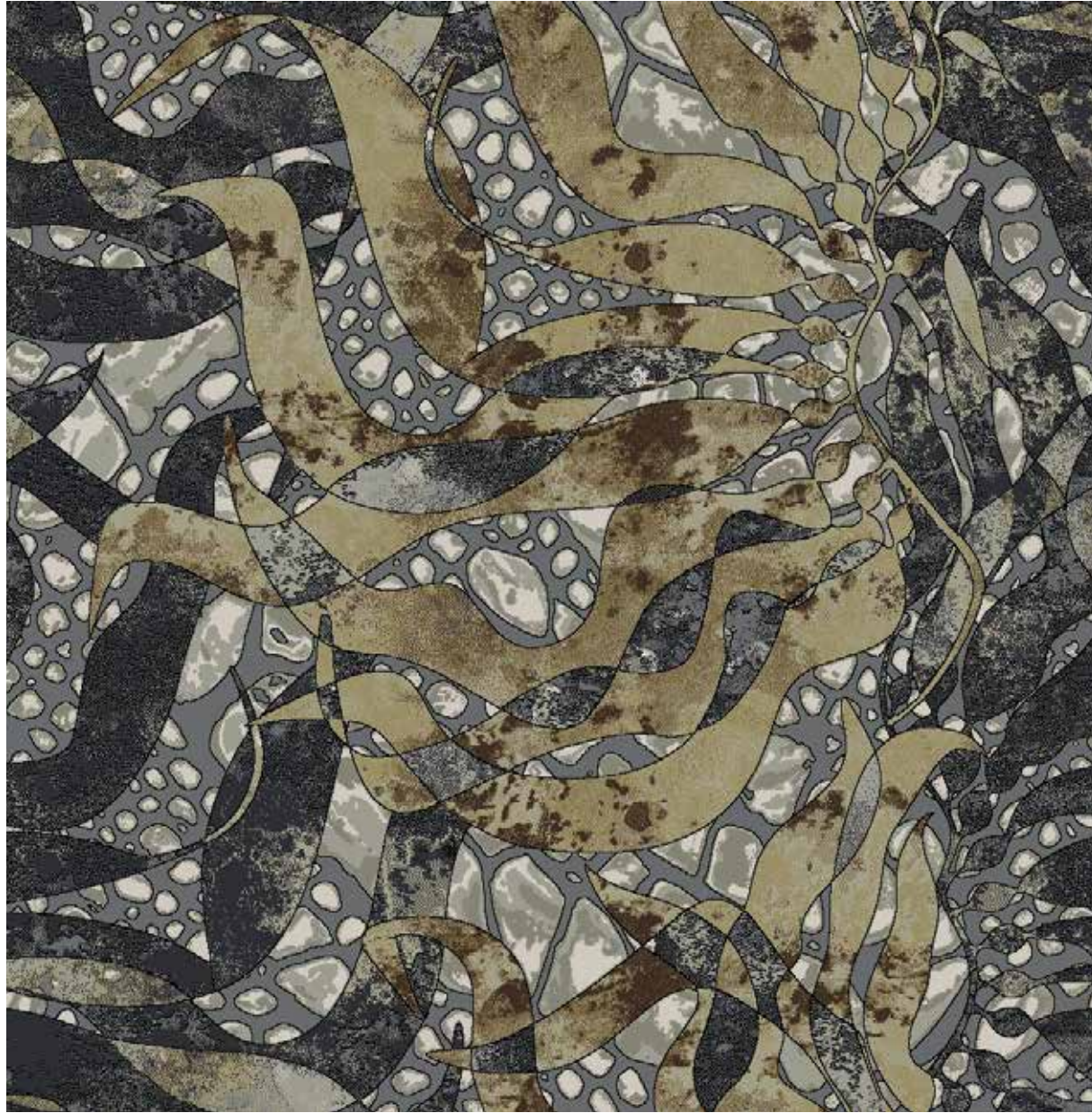


MATCH; SET MATCH | 182.88CM (W) X 160.02CM (L)



570 CORAL SEA

A larger scale of layering of coral patterns. Coral reefs are often called 'rainforests of the sea' due to their diverse ecosystem.



MATCH; SET MATCH | 365.76CM (W) X 314.96CM (L)



730 KOMBU

This design realises the gentle juxtaposition of the flora and fauna of our reefs. Bringing together the intricate patterns of the sea turtle and seaweed, as they dance with the movement of the water.



MATCH; HALF DROP | 365.76CM (W) X 254CM (L)



725 ORBI

A micro view of coral, this design provides an intricate and sophisticated, almost labyrinth like feel.



MATCH; HALF DROP | 365.76CM (W) X 320.04CM (L)



720 ARA

A lighter, more neutral derivative of our Cascade design, this textured, abstract pattern draws inspiration from observing water wash over a reef.



940
MOZUKU

780
ARAME

Oceanic Collection



MATCH; SET MATCH | 365.76CM (W) X 360.05CM (L)



735 BABEL

A more neutral take on the Atomic pattern from the Designer Jet® Sheet designs, these bubbles of oxygen from the superabundance of under water life and the skin divers that frequent our reefs provide a playful pattern designed for any interior.



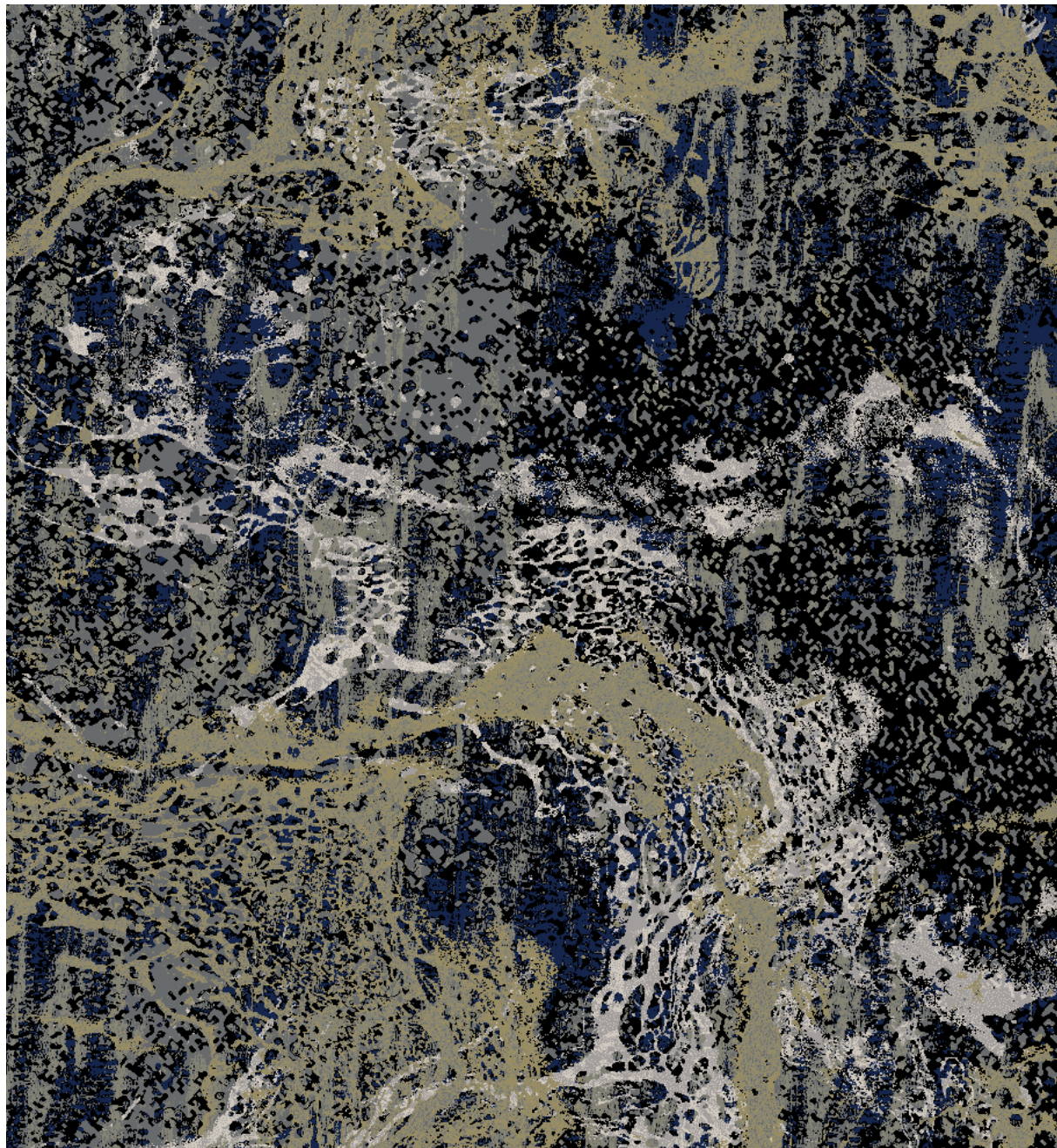
MATCH; SET MATCH | 365.76CM (W) X 322.58CM (L)



745 UNDARI

A study of kelp reveals how the plant transforms its very make-up into a composition of shapes seen through the transparent lenses of the crystal clear waters.



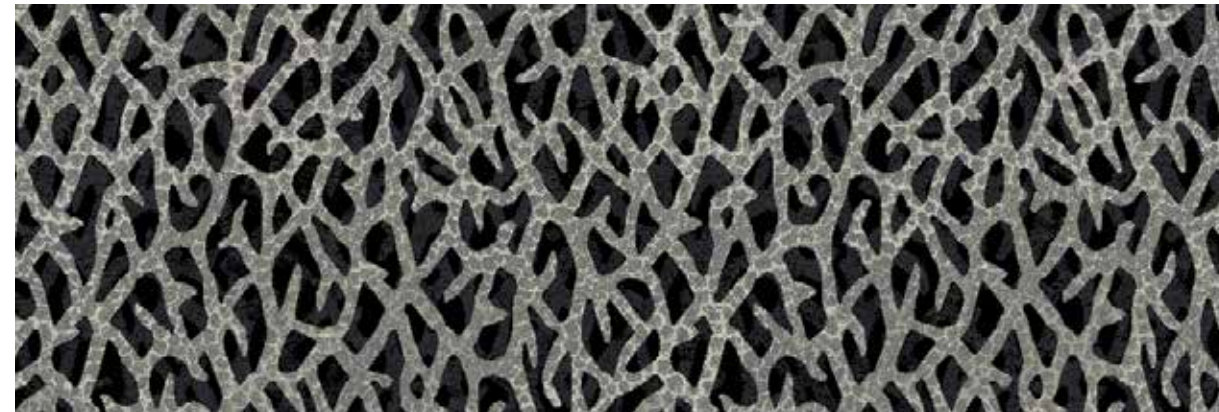


MATCH; HALF DROP | 365.76CM (W) X 320.04CM (L)

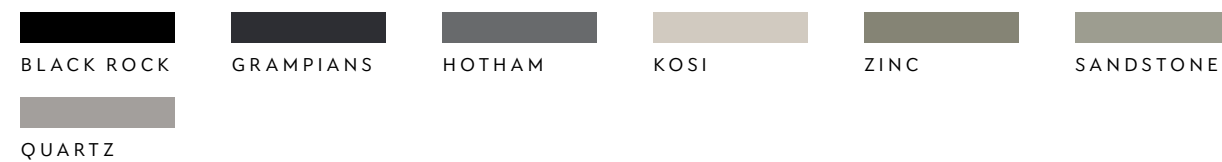


750 CASCADE

From the air, water washing over a reef creates unlikely yet sublime textures.

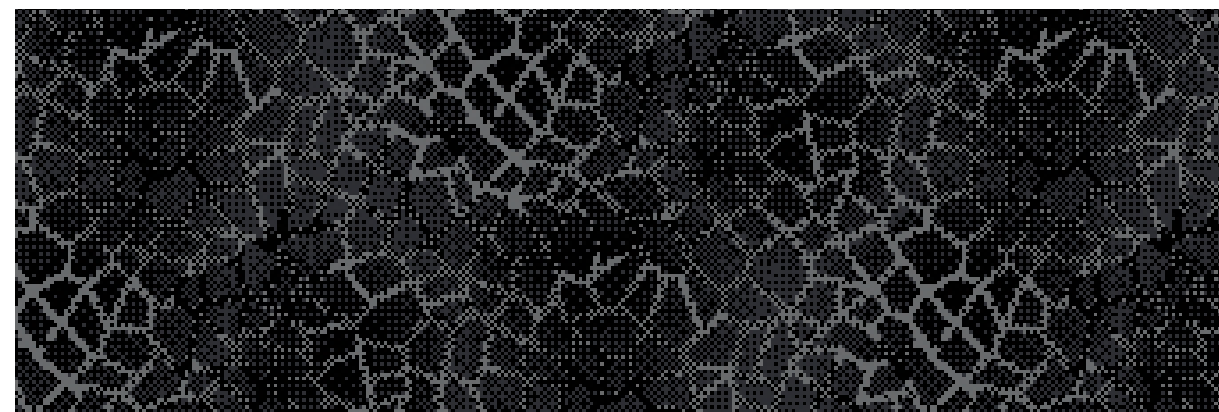


MATCH; SET MATCH | 365.76CM (W) X 320.04CM (L)



760 STORM REEF

Coral is omnipresent in every corner of our majestic reefs and transcends into pattern seamlessly. This design features a layering of coral with an abstract sandy texture in the background.

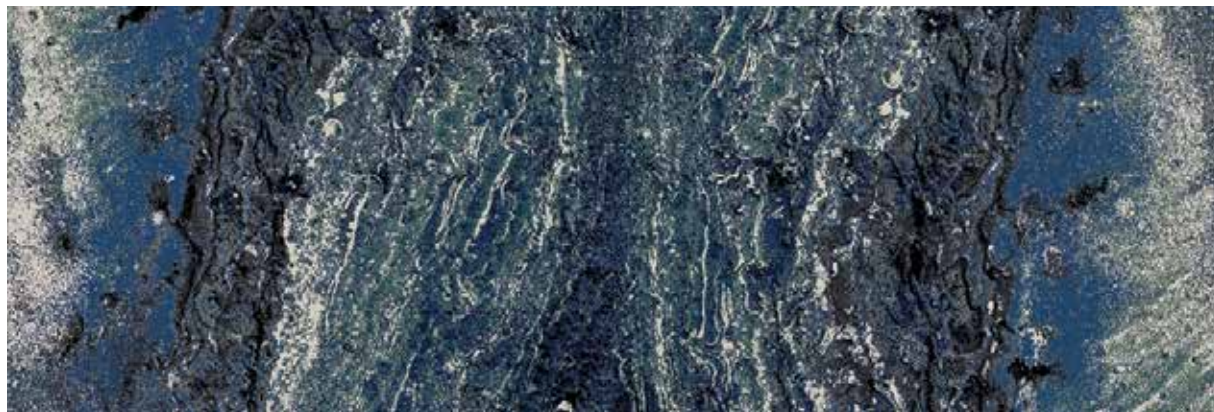


MATCH; HALF DROP | 45.72CM (W) X 40.01CM (L)

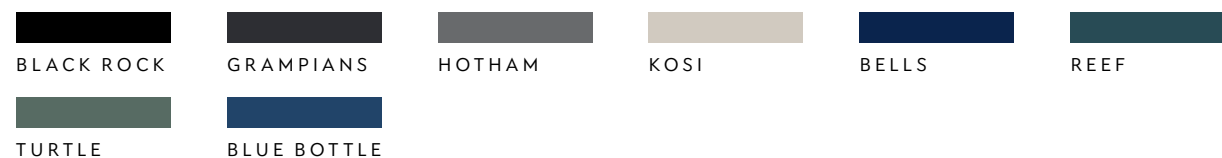


780 ARAME

The intricate study of coral reveals a myriad of patterns. Zoom in on the texture and you'll be hypnotised by the natural design of this pattern.



MATCH; HALF DROP | 365.76CM (W) X 254CM (L)



830 NINGALOO

Drawing inspiration from Ningaloo, one of two coral reefs in the world that have formed on the western side of a continent, this mirror looking design makes a bold statement.

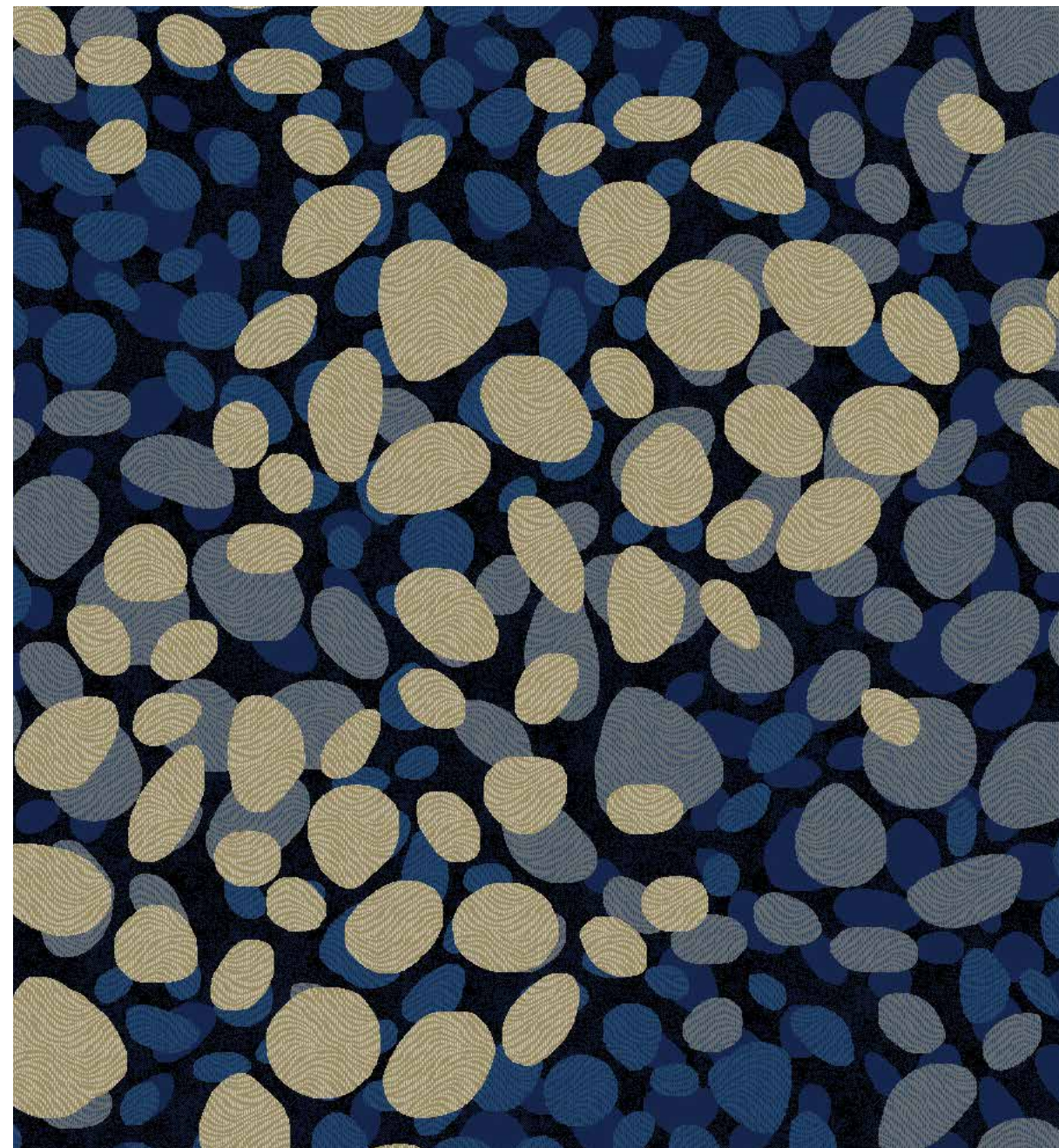


MATCH; HALF DROP | 365.76CM (W) X 320.04CM (L)



840 LYRA

A birdseye view of our Oceanic reefs merging with the ocean provides a perfect textured pattern.

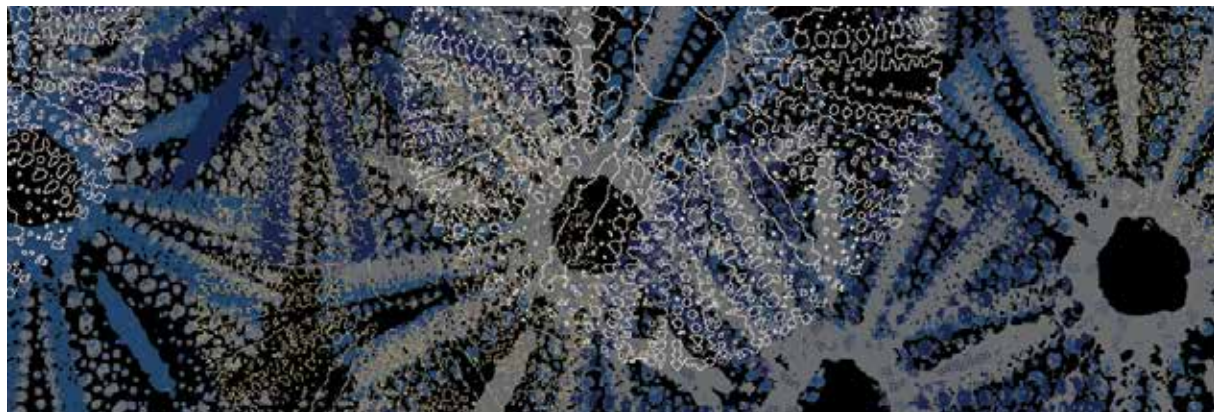


MATCH; HALF DROP | 365.76CM (W) X 320.04CM (L)



845 FINN

A derivative of pattern 860 Nemo, this design also takes inspiration from the Angelfish with its beauty and inquisitive nature.



MATCH; HALF DROP | 365.76CM (W) X 365.76CM (L)



850 URCHIN

A prolific element on the sea bed, sea urchins and other echinoderms live in a range of habitats, from the tidal surf to the deepest part of the ocean. Their powers of regeneration often admired in the marine community.



MATCH; HALF DROP | 365.76CM (W) X 320.04CM (L)



860 NEMO

The intriguing Angelfish has a fascinating pattern formation for deception against predators. This design plays on the eye at the rear of the fish and is a derivative of pattern 845 Finn.

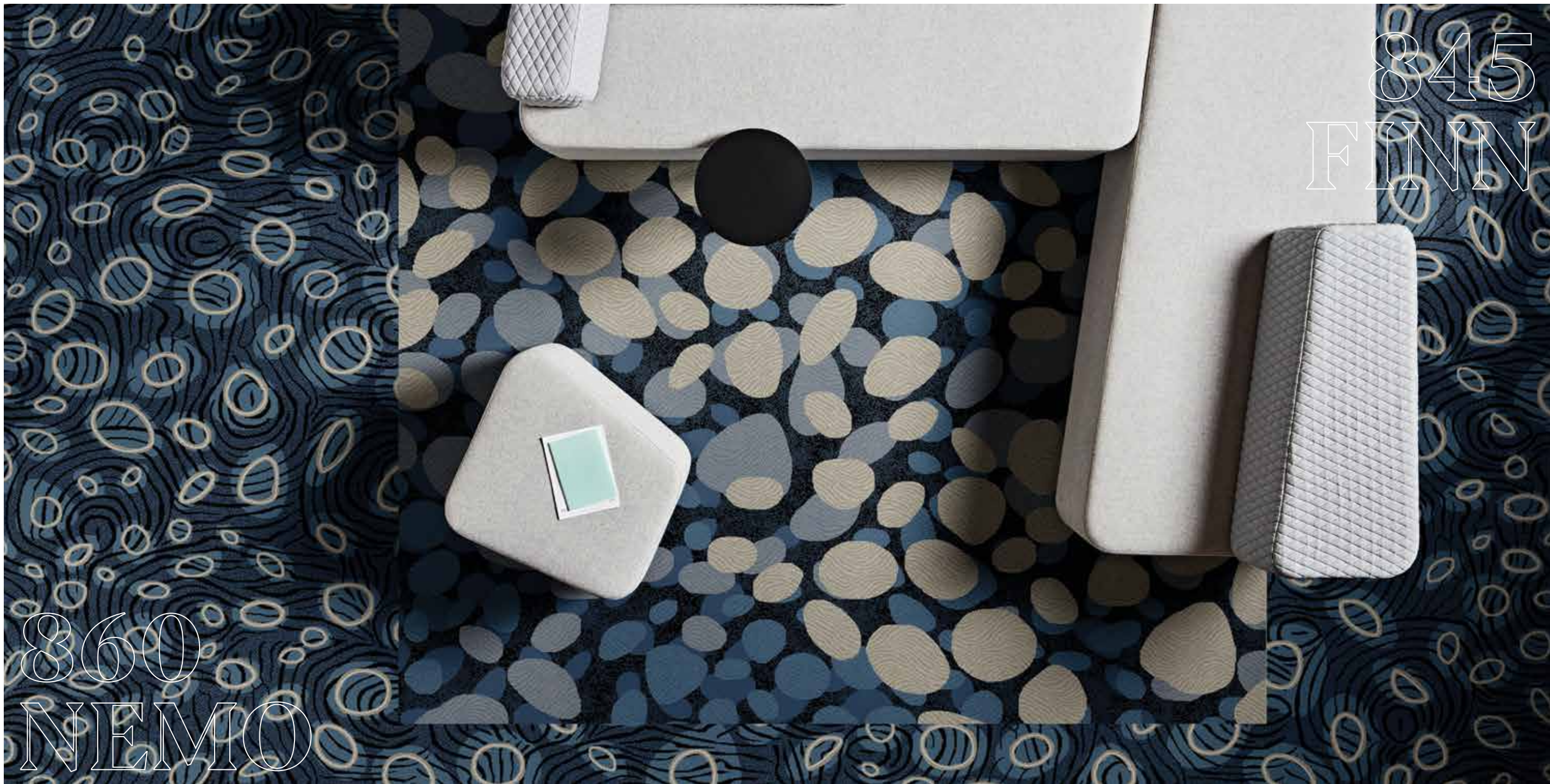


MATCH; SET MATCH | 182.88CM (W) X 165.74CM (L)



940 MOZUKU

A further development built on the Sampa pattern in the Designer Jet® Sheet designs, this arrangement adds a layer emulating the fascinating distortions found underwater.



845
FINN

860
NEMO

OCEANIC COLLECTION

Woven Carpet



Technical Specifications

Product Type	Woven (Axminster) Carpet Roll
Description	Patterned Cut Pile
Colours	16 Standard Designs
Yarn	80% Wool / 20% Synthetic
Pitch & Beat Up	Pitch: 27.6/10cm (7/inch) Beat Up: 31.5/10cm (8/inch)
Product Thickness	7mm (+/- 1.0mm)
Quality	7x8
Pile Weight / Quality	1290g/m ² / 38oz/yd ² (+/- 5%)
Backing Structure	Polypropylene Weft
Product Size	3.66m Wide Roll
Available Options*	7x7 (34oz/yd ²), 7x9 (42oz/yd ²), 7x10 (48oz/yd ²) Colour and Design Customisation Available
Installation Method	Dual Bond Recommended

Performance

Anti-static	AATCC 134 <3.5 Kilovolts at 21°C & 20% Relative Humidity
Flammability*	CRF 4.5kW/m ² (Dual Bond) Smoke Value 750% Minutes
Colourfast to Light	5 - 6
Light Reflectance Values	Available on Request
Stain Resistance	Natural Wool Fibre Stain Resistance
ACCS Rating*	Contract Heavy Duty & Stairs #19158
Australian Warranty*	7 Years Available on Request
New Zealand Warranty	Feltex provides comprehensive warranties for our carpets. All warranties are issued on a project by project basis. Please contact us to discuss your requirements further.

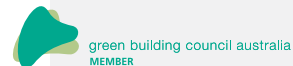
Sustainability

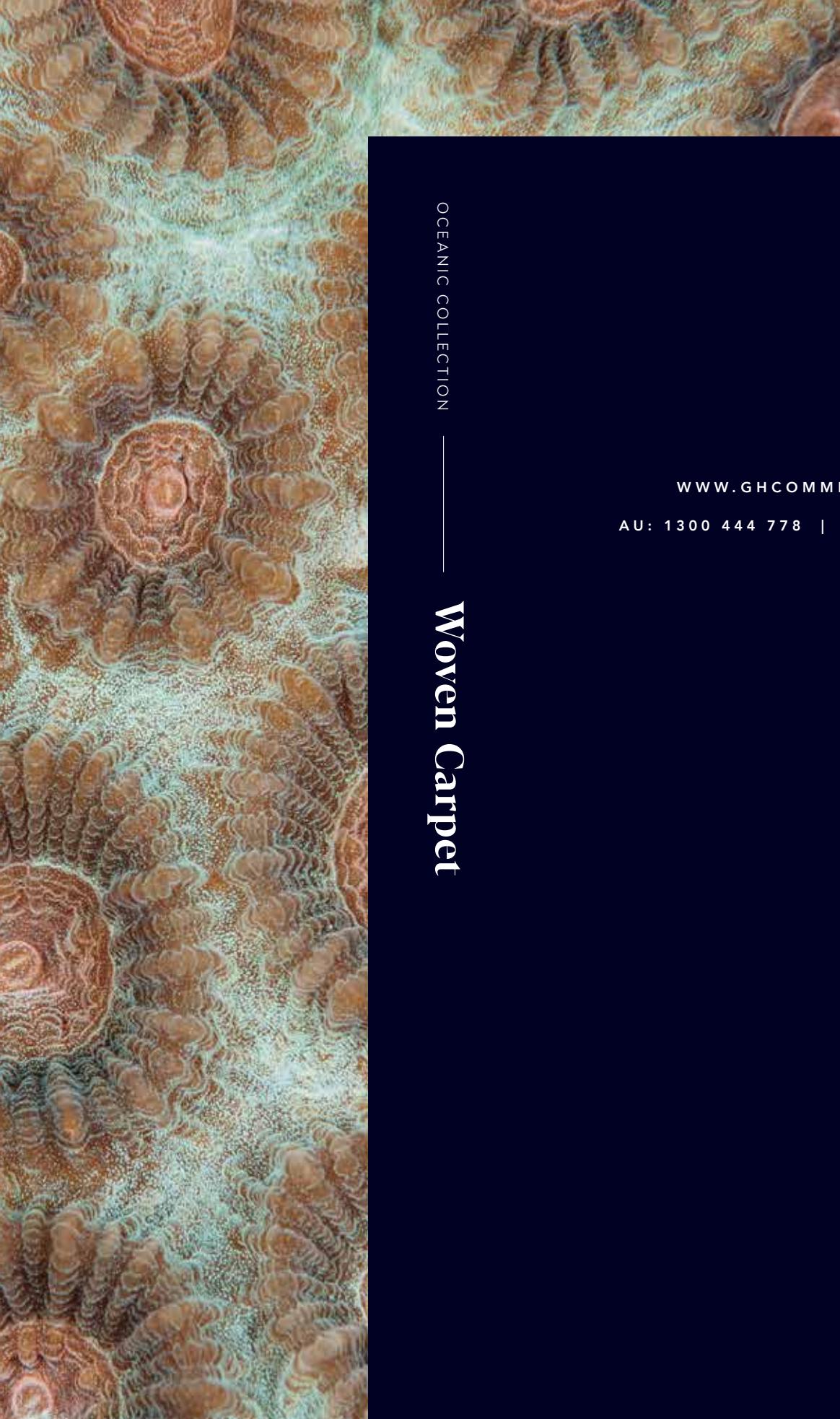
PVC Minimisation	PVC Free
Indoor Air Quality*	Green Building Council Compliant for VOC emission rate limits
Product Stewardship	This product is recyclable and qualifies for takeback at the end of life under the GH Commercial product stewardship program
Green Star	Environmental Certification Scheme (ECS) Level 4 maximum points. Certificate #19158
Accreditation	Manufactured under a quality and environmental system certified and complying with ISO 9001 and ISO 14001 by an accredited certification body.

#Test results are available on request. Specifications and colourations are subject to manufacturing tolerances. As part of the GH Commercial continuous improvement program, GH Commercial reserves the right to change the specifications of or delete colours of this product without notice. All GH Commercial woven carpets must be installed in accordance with the relevant Australian and/or New Zealand applicable standards (latest AS2455 Parts 1 & 2) and the GH Commercial Woven Carpet Installation Instructions. While all care is taken, product images may vary in colour due to possible printing process variations. Images do not seek to duplicate the exact visual appearance, but serve merely as a guide or point of reference. *Minimum order quantity may apply. Contact your GH Commercial Account Manager for information. *This warranty applies to woven carpet within the Oceanic Collection and is in addition to any rights consumers may have under Australian consumer law. Terms and conditions apply - for full information in respect to the scope of the warranty please contact your GH Commercial Account Manager or our Head Office.



Manufactured under a quality and environmental system certified and complying with ISO 9001 and ISO 14001 by an accredited certification body.





OCEANIC COLLECTION

Woven Carpet

WWW.GHCOMMERCIAL.COM

AU: 1300 444 778 | NZ: 0800 500 210