



PLAID

TECHNICAL ASPECT

Construction: Wilton

Composition: 100% Wool

Secondary Backing: Natural Jute

Stitches per m²: 96.000m²

Pile Height: 6.0mm

Total Height: 8.0mm

Pile Weight: 1.211g/m²

Total Weight: 2.207g/m²

Roll Width: 400cm

Use: Heavy Residential/ Medium Commercial



Level 1, 68 Sophia Street
Surry Hills, NSW 2010

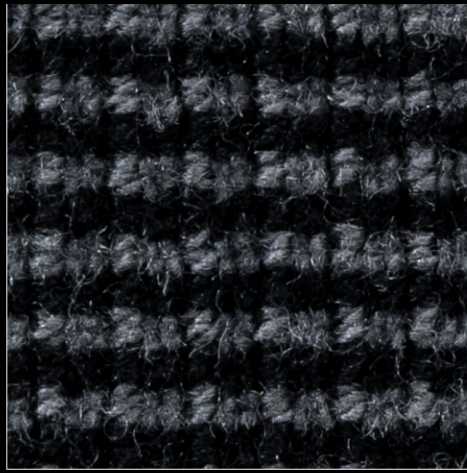
1800 239 237 (1800 2FYBER)
info@fyber.com.au
@fyber_flooring

www.fyber.com.au

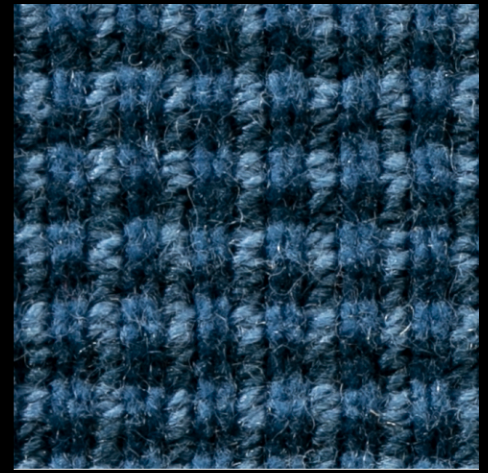
FYBER



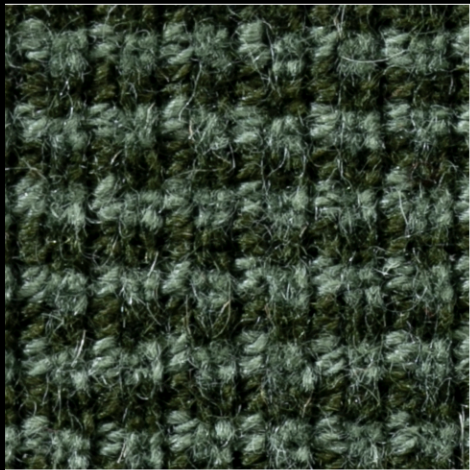
9282 ALMOND



9280 CARBON



9224 COBALT



9228 JUNIPER



9276 MILK



9254 MONOCHROME