



Prefabricated Change Rooms & Sports Facilities



Meeting sporting and recreational needs in our communities

landmarkpro.com.au | 1300 768 230



Landmark
open space structures & solutions

BRISBANE | SYDNEY | MELBOURNE | ADELAIDE | PERTH | AUCKLAND

About Landmark

Landmark Products offers a complete, professional open space structure and furniture service throughout Australia.

From design through to manufacturing and installation, Landmark Products can deliver a total project solution.

With over 30 years' experience, and a team of highly skilful, expert specialists in public use infrastructure, Landmark is committed to exceeding the expectations of our clients, whether for a relatively straightforward project such as to supply street furniture, or for complex, large scale, custom built urban projects.



Contents



Six reasons why Landmark is the preferred choice



On Slab - up to 24 players
K8101 AND K8102



Female-friendly facilities
K8104 AND K8105



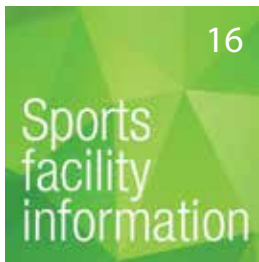
Small club facilities
K8103



Coaches' and players' shelter
K8110 and K8111



Cubicle fitout
STANDARD AND OPTIONAL



Sports facility Information
INTERNAL/EXTERNAL WALLS, SERVICE DUCTS



Colours and Finishes
CHOICES



Design and installation
CONCEPT TO FINISH



Why Landmark?

When seeking to enrich your community through providing safe, environmentally-friendly public spaces and exceptional landscape design, there are six clear reasons why you're in safe hands with Landmark.



* Subject to terms and conditions.



Long Life - Build Quality

At Landmark we understand the demands placed on our products

through public use, and the need to take a whole-of-life approach to these important community assets.

From design through to manufacturing, installation and ongoing maintenance, our products have been designed with visual appeal, durability and functionality front-of-mind. For this reason, we confidentially offer a 25-year structural guarantee on all products.



Widest Product Range

With Australia's largest range of

standard open space structures and park furniture, there are pre-designed and pre-engineered solutions available for almost every specification, delivering significant time savings, as well as reducing design, engineering and compliance costs.

If needed, all standard products can be modified to suit, or if you are looking for something unique our highly experienced design team can deliver a complete custom solution.



Kit Form Engineered

Landmark structures arrive flat-packed,

ready-to-assemble, with no on-site fabrication needed. Step-by-step assembly instructions and appropriate documentation are included.

The benefits of kit-form are numerous. With all components pre-cut and pre-drilled, there is less noise, less waste, less disturbance to the environment. Because erection times are so much quicker than traditional construction, there is significantly less on-site disruption. For remote or difficult sites, Landmark's factory-built structures are the sensible solution.



Customer Service

Landmark Products is committed to ensuring prompt

and effective service from first enquiry through to project completion. Our customer service staff and Project Consultants are expert in their field, and will guide you through the process, making this an easy and hassle-free experience.

It is our mission to ensure that the products you purchase are fit-for-purpose and all things have been considered and communicated effectively.



Site Specific Solutions

Through years of experience we understand the challenges our

diverse country can present in the delivery of these open space projects.

By considering and analysing a multitude of factors, Landmark design, engineer and manufacture to suit individual site specifications, working with you to select the most appropriate design and materials for the application, location, environment and budget.



Installation and project management service

Landmark Products is one of the few companies in Australia that provide a full-service offering – from design, manufacturing, and installation. Thanks to this strategic advantage, Landmark Products' national installation and project management service is renowned nationally for its expertise.

From small installations through to complex projects our experienced project managers and installation teams will work closely with you to ensure the project is delivered on time and to budget.



Sport Facilities



For teams up to 24 players On-Slab Building



SPORTS FACILITIES (K8101 AND K8102)

Adaptable, modern, kit-form sport facilities are the ultimate hub for sporting and recreational communities.

General specifications

Materials	Finishes	Fixings
<ul style="list-style-type: none"> Colorbond® custom orb roof sheeting XRW grade with polycarbonate inserts HDG and powder-coated steel roof frame and posts Colorbond® custom orb external walls Powder coated aluminium ventilation screens Galvanised steel wall frames XRW grade Colorbond® Maxrib internal wall cladding XRW grade Colorbond® steel clad solid core external cubicle doors 	<ul style="list-style-type: none"> Concrete floor – R10 slip resistant broom finish 	<ul style="list-style-type: none"> Colorbond® gutters and downpipes to ground Heavy duty door closers, push-pull handles, indicator locks and deadlocks Stainless-steel anti-vandal fastening system Remaining fixings as galvanised Vandal resistant fluorescent lights to change rooms and covered outdoor area, standard fluorescent lights to store and kiosk areas

Options

<ul style="list-style-type: none"> Internal and external cladding – corrugated steel sheeting, grooved or smooth plywood, hardwood weather boards, (ACM) or other Timber vent screens 	<ul style="list-style-type: none"> Powder-coating or two-pack finishes on posts and cladding 	<ul style="list-style-type: none"> Stainless-steel fixtures Colorbond® gutters and PVC downpipes plumbing to water tanks Selection of privacy and ornamental screens Solar options for lighting and power
---	---	---

For more information on cubicle options see page 15.

Kiosk specifications

Materials	Finishes	Fixings
<ul style="list-style-type: none"> Insulation to the kiosk roof and walls** Perforated steel mesh behind ventilation screens 	<ul style="list-style-type: none"> Painted plywood ceiling No internal wall lining allowance (kiosk fit-out by others) 	<ul style="list-style-type: none"> (3) Colorbond® server roller doors with internal shootbolts (1) Colorbond® steel clad solid core door Allowance for (1) plumbing water inlet and (1) waste water outlet Allowance for (4) 10 AMP double GPOs

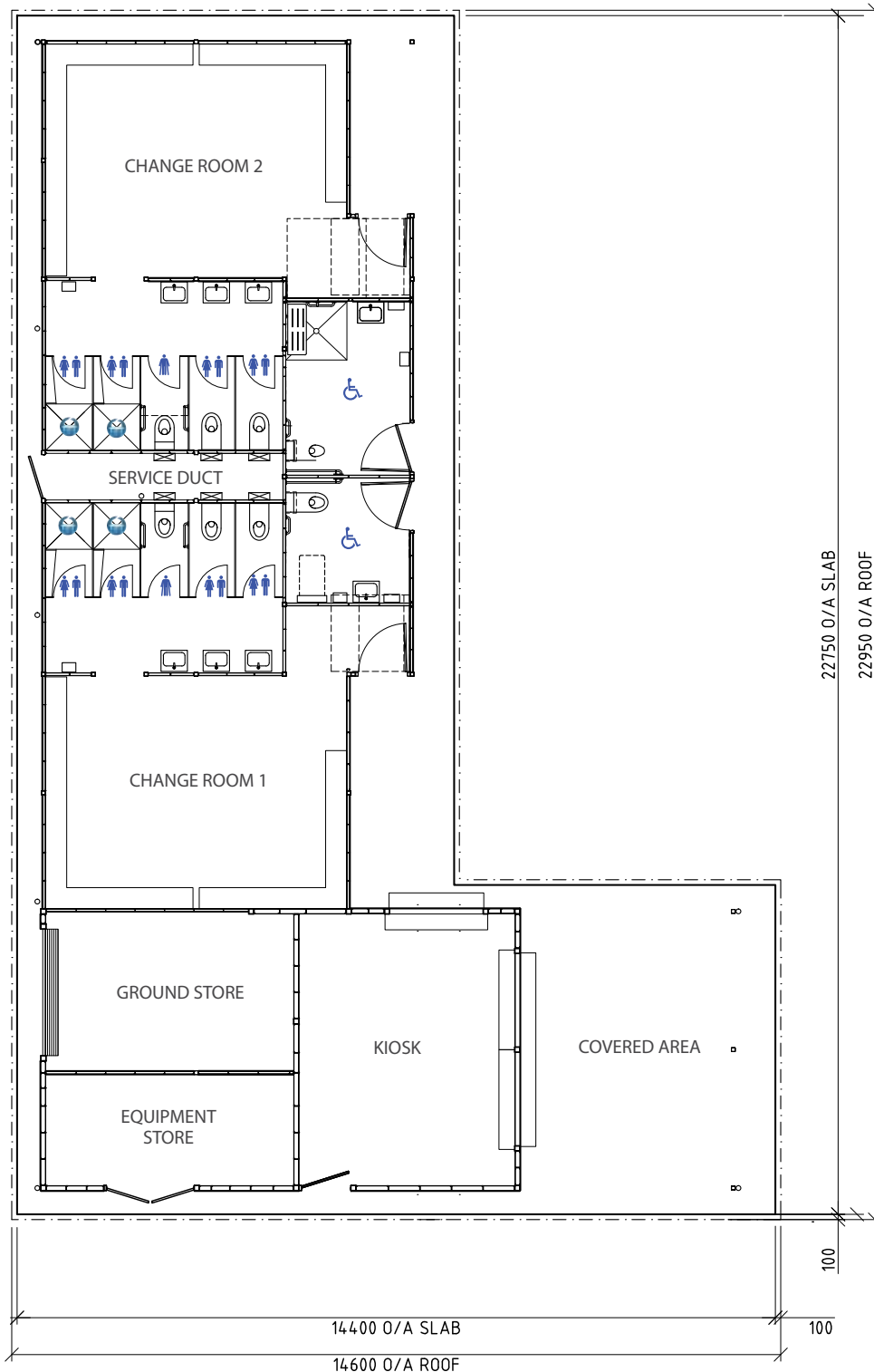
Change rooms specifications

Materials	Fixings
<ul style="list-style-type: none"> Veneer panel partitioning systems where applicable ACM sheeting to all immediate shower cubicle walls 	<ul style="list-style-type: none"> Timber or aluminium bench seating Stainless steel pans* (Disable and Ambulant) Chrome plated coat and hat hooks with rubber caps Stainless steel shelves Stainless steel basins with Colorbond® shroud Self-closing water taps*** Fixed shower heads, each with mixer tap and floor waste Slimline automatic hand dryers (optional) Vertical satin stainless steel soap dispensers Stainless steel mirrors

* All stainless steel is grade 304 unless noted otherwise.

** Insulation is required in the kiosk (only – Class 6 Buildings and Structures) to meet requirements of Section J. Volume 1 of the NCC Base design includes wall and roof/ceiling insulation that meets the requirements for all the mainland capital cities (minimum three star rating), specifications available on request.

*** All tap ware, cisterns and shower heads are WELS rated.



STANDARD ROOF



Service duct

- Brass vandal proof keyed tap with hose mount
- Single phase electric instant water heaters
- XRW grade Colorbond® steel clad solid core service duct door with dead lock

Grounds store

- XRW grade Colorbond® maxirib internal wall cladding
- 4.6 x 3.1m clear internal space (14.3m²)
- 2.1 x 2.4m Colorbond® security roller door

Equipment store

- XRW grade Colorbond®, maxirib internal wall cladding
- 4.6 x 2.1m clear internal space 9.7m²
- 2.04 x 1.66m Colorbond® clad double-hinged doors

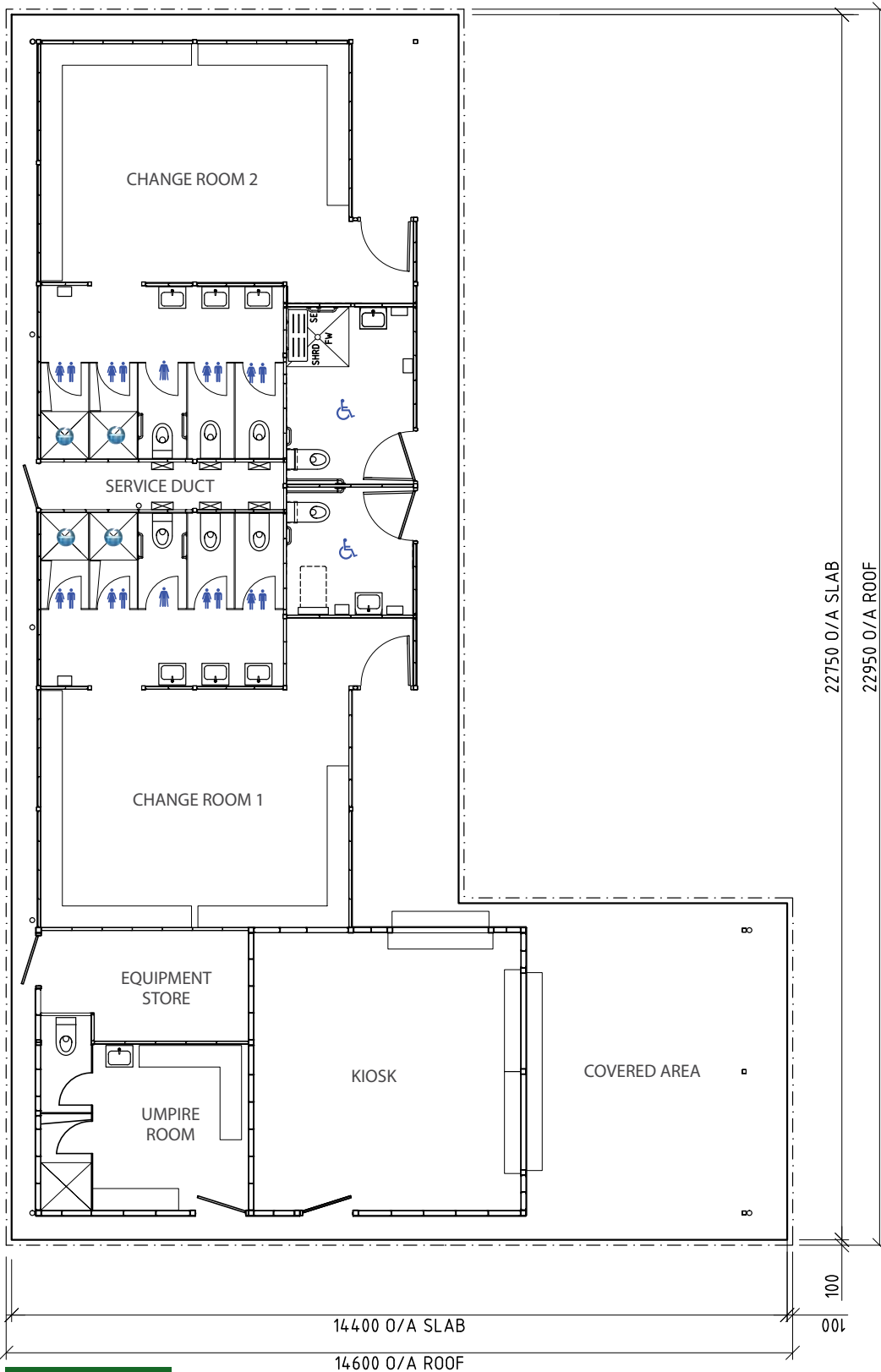
K8101 SERIES

CONFIDENCE AND COMPLIANCE

- Footing design and set-out plan
- Engineers certification and building application drawings
- Comprehensive installation instructions
- Delivery to site
- Precision manufactured components and hardware
- Pre-processed manufacturing



Ask us about our installation service



K8102 SERIES

CONFIDENCE AND COMPLIANCE

- Footing design and set-out plan
- Engineers certification and building application drawings
- Comprehensive installation instructions
- Delivery to site
- Precision manufactured components and hardware
- Pre-processed manufacturing

STANDARD ROOF



Service duct

- Brass vandal proof keyed tap with hose mount
- Single phase electric instant water heaters
- XRW grade Colorbond® steel clad solid core service duct door with dead lock

Equipment store

- 3.85 x 2.05m clear internal space (7.9m²)
- XRW grade Colorbond® maxirib internal wall cladding
- 2.04 x 1.66m Colorbond® clad double hinged doors

Umpire room

- 3.85 x 3.05m clear internal space (13.8m²)
- XRW grade Colorbond®, maxirib internal wall cladding
- 2.1 x 2.4m Colorbond® security roller door
- Stainless-steel standard pan with plastic cisterns
- Aluminium composite sheeting to all immediate shower cubicle walls
- Veneer panel partitioning systems where applicable
- Aluminium bench seating
- Stainless steel basin with Colorbond® shroud
- Self-closing water tap

22750 O/A SLAB
22950 O/A ROOF

100
100

14400 O/A SLAB
14600 O/A ROOF



Ask us about our installation service



Sport Facilities



Female friendly facilities

On-Slab Building

SPORTS FACILITIES (K8104 AND K8105)

Affordable and adaptable unisex change facilities that cater for the needs of both males and females.



General specifications

Materials	Finishes	Fixings
<ul style="list-style-type: none"> Colorbond® custom orb roof sheeting XRW grade with polycarbonate inserts HDG and powder-coated steel roof frame and posts Colorbond® custom orb external walls Powder coated aluminium ventilation screens Galvanised steel wall frames XRW grade Colorbond® Maxrib internal wall cladding Pre-hung XRW grade Colorbond® steel clad solid core external cubicle doors Roof safety mesh and insulation 	<ul style="list-style-type: none"> Concrete floor – R10 slip resistant broom finish 	<ul style="list-style-type: none"> Colorbond® gutters and downpipes to ground Heavy duty door closers, push-pull handles, indicator locks and deadlocks Stainless-steel anti-vandal fastening system Remaining fixings as galvanised Vandal resistant fluorescent lights to change rooms



Options		
<ul style="list-style-type: none"> Internal and external cladding – corrugated steel sheeting, grooved or smooth plywood, hardwood weather boards, (ACM) or other 	<ul style="list-style-type: none"> Powder-coating or two-pack finishes on posts and cladding 	<ul style="list-style-type: none"> Stainless-steel fixtures Colorbond® gutters and PVC downpipes plumbing to water tanks Selection of privacy and ornamental screens Solar options for lighting and power

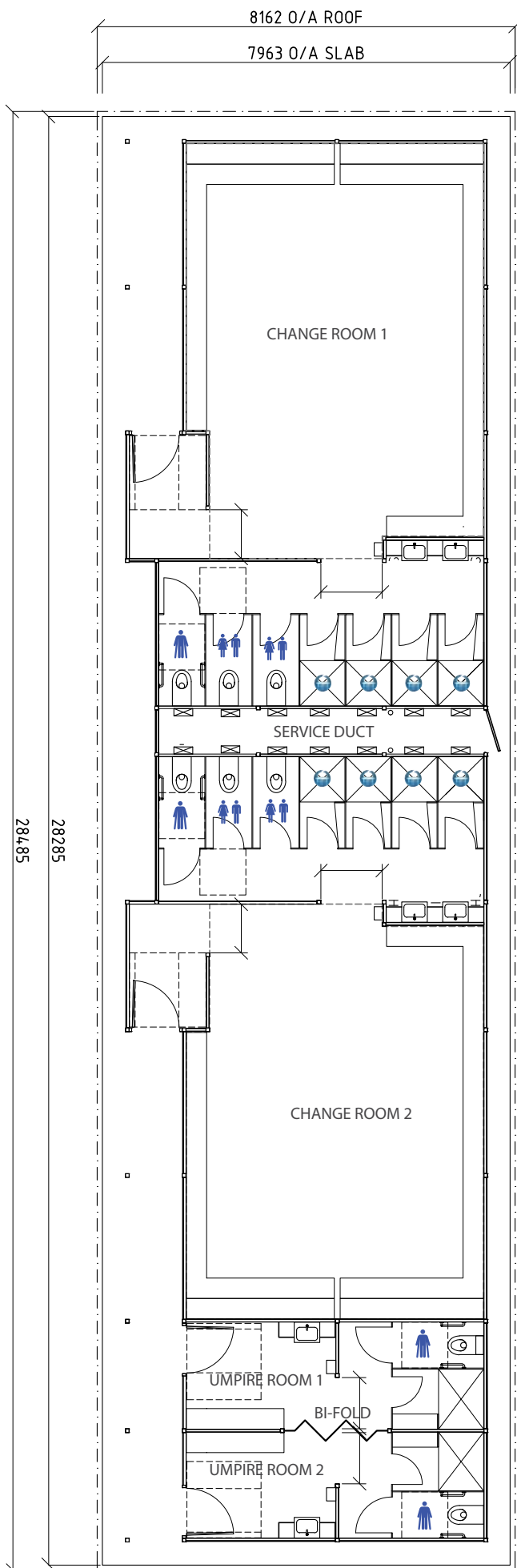
Change rooms specifications

Materials	Fixings
<ul style="list-style-type: none"> Veneer panel partitioning systems where applicable ACM sheeting to all immediate shower cubicle walls 	<ul style="list-style-type: none"> Timber or aluminium bench seating Stainless steel* pans (Disable and Ambulant) Chrome plated coat and hat hooks with rubber caps Stainless steel shelves Stainless steel basins with Colorbond® shroud Self-closing water taps** Fixed shower heads, each with mixer tap and floor waste Slimline automatic hand dryers (optional) Vertical satin stainless steel soap dispensers Stainless steel mirrors

* All stainless steel is grade 304 unless noted otherwise.

** All tap ware, cisterns and shower heads are WELS rated.

For more information on cubicle options see page 15.



STANDARD ROOF



Service duct

- Brass vandal proof keyed tap with hose mount
- Single phase electric instant water heaters
- XRW grade Colorbond® steel clad solid core service duct door with dead lock

Umpires' rooms

- Each 2.06 x 5.74m (11.8m²)
- XRW grade Colorbond®, maxirib internal wall cladding
- Bi-fold door
- Stainless-steel standard pan with plastic cisterns
- Aluminium composite sheeting to all immediate shower cubicle walls
- Veneer panel partitioning systems where applicable
- Aluminium bench seating
- Stainless steel basin with Colorbond® shroud
- Self-closing water tap



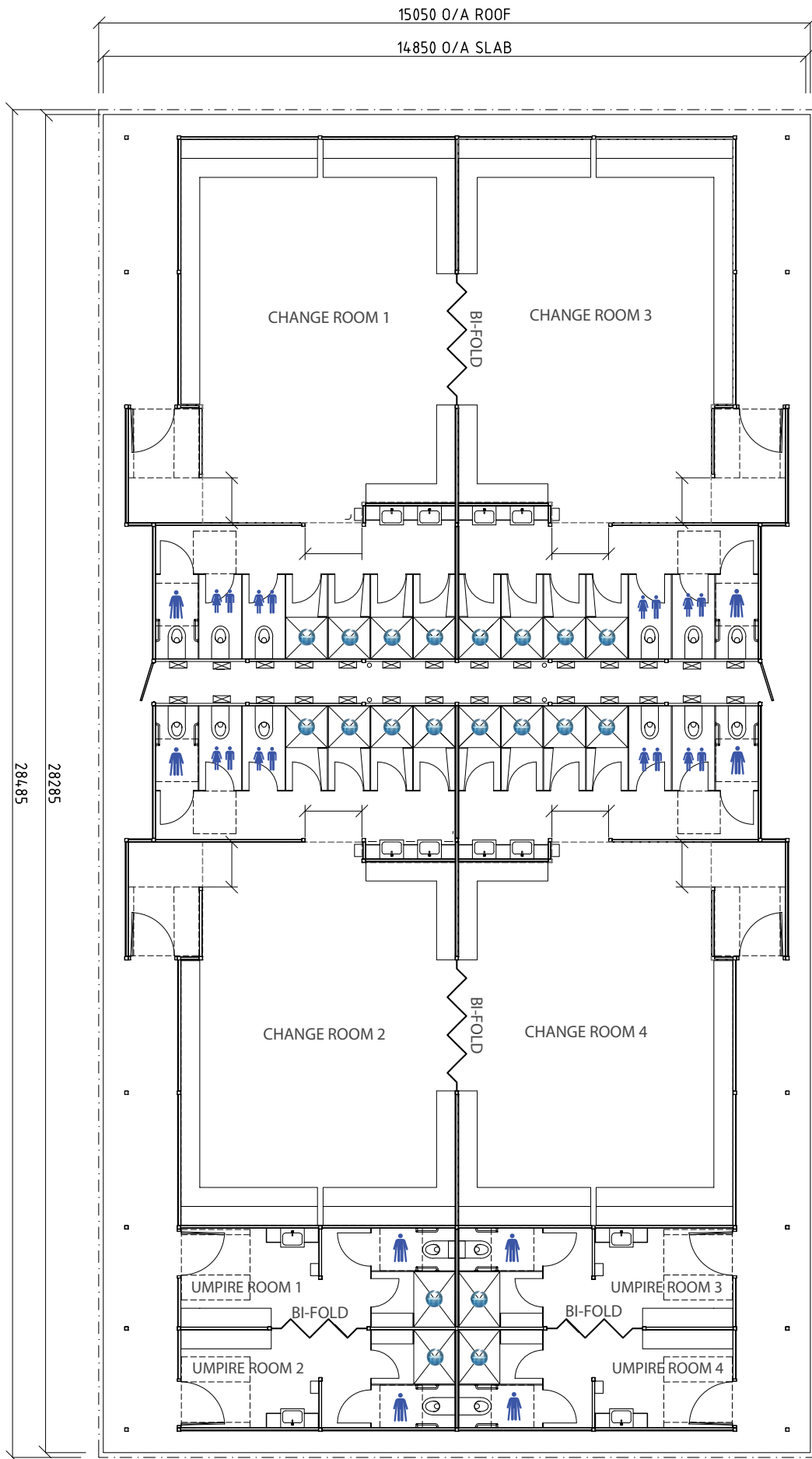
CONFIDENCE AND COMPLIANCE

- Footing design and set-out plan
- Engineers certification and building application drawings
- Comprehensive installation instructions
- Delivery to site
- Precision manufactured components and hardware
- Pre-processed manufacturing



Ask us about our installation service

K8104 SERIES



K8105 SERIES

**STANDARD
ROOF**





Sport Facilities



Small club facilities On-Slab Building



SPORTS FACILITIES (K8103)

This clever, compact sporting club facility is designed for smaller local clubs, providing facilities for players and the public.

General specifications

Materials	Finishes	Fixings
<ul style="list-style-type: none"> Colorbond® roof sheeting XRW grade with polycarbonate inserts ACQ hardwood posts and LOSP pine frames ACQ hardwood ventilation screens XRW grade Colorbond® custom orb external and internal wall cladding Pre-hung XRW grade Colorbond® steel clad solid core external cubicle doors 	<ul style="list-style-type: none"> Concrete floor – R10 slip resistant broom finish 	<ul style="list-style-type: none"> Colorbond® gutters and downpipes to ground Heavy duty door closers, push-pull handles, indicator locks and deadlocks Stainless-steel anti-vandal fastening system Remaining fixings as galvanised

Options

<ul style="list-style-type: none"> Size variations, adding rooms, different layouts or roof designs Internal and external cladding – corrugated steel sheeting, grooved or smooth plywood, hardwood weather boards, (ACM) or other 	<ul style="list-style-type: none"> Powder-coating or two-pack finishes on posts and cladding 	<ul style="list-style-type: none"> Stainless-steel fixtures Colorbond® gutters and PVC downpipes plumbing to water tanks Selection of privacy and ornamental screens Solar options for lighting and power
--	---	---

For more information on cubicle options see page 15.



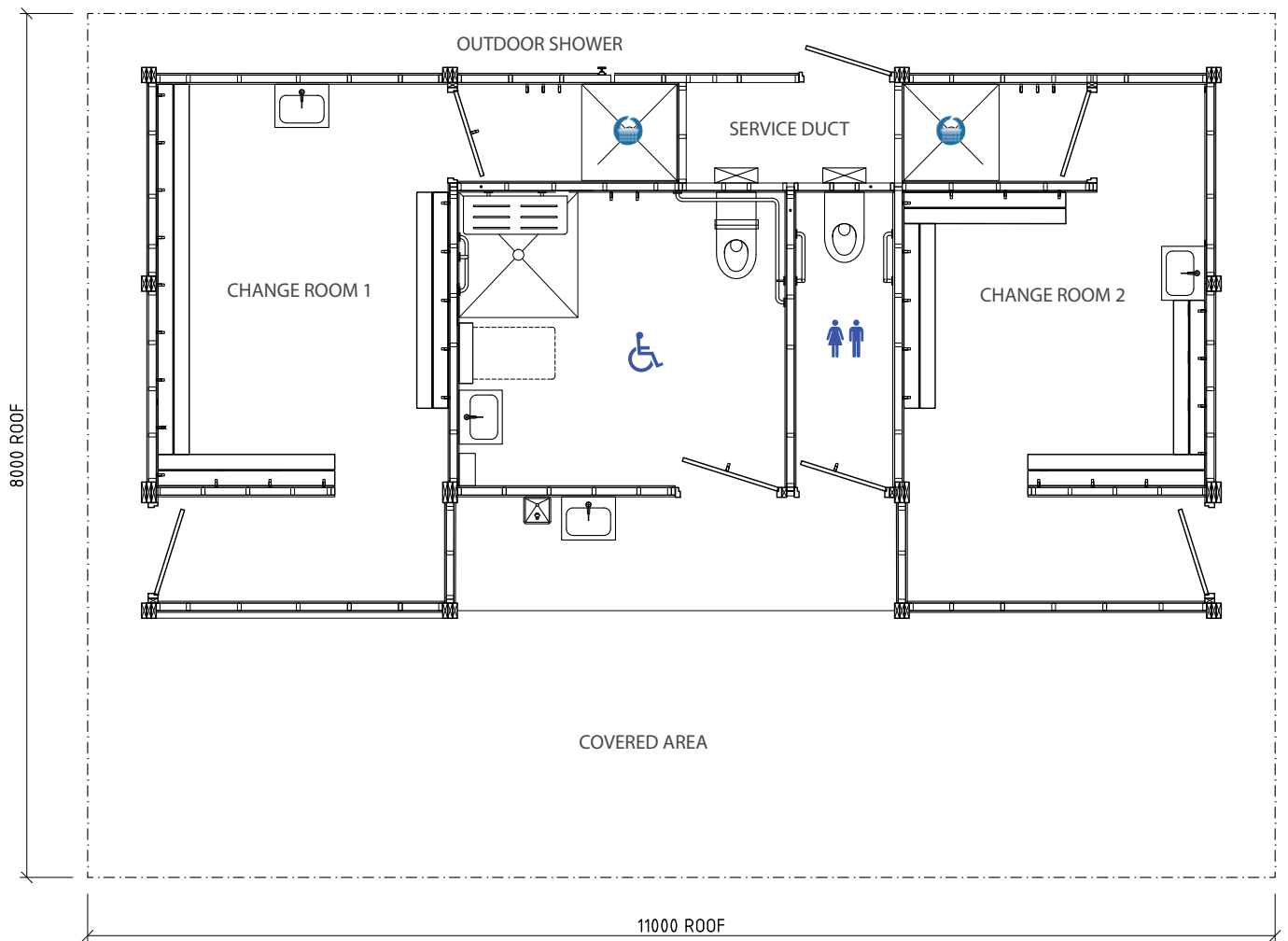
K8103 On-Slab small club facilities

Change rooms specifications

Materials	Fixings
<ul style="list-style-type: none"> Veneer panel partitioning systems where applicable ACM sheeting to all immediate shower cubicle walls 	<ul style="list-style-type: none"> Aluminium bench seating Chrome plated coat and hat hooks with rubber caps Stainless steel* basins with Colorbond® shroud Self-closing water taps** Fixed shower heads, each with mixer tap and floor waste Stainless steel mirrors

* All stainless steel is grade 304 unless noted otherwise.

** All tap ware, cisterns and shower heads are WELS rated.



K8103 SERIES

STANDARD
ROOF



CONFIDENCE AND COMPLIANCE

- Footing design and set-out plan
- Engineers certification and building application drawings
- Comprehensive installation instructions
- Delivery to site
- Precision manufactured components and hardware
- Pre-processed manufacturing



Ask us about our
installation service

Service duct

- Brass vandal proof keyed tap with hose mount
- Single phase electric instant water heaters
- XRW grade Colorbond® steel clad solid core service duct door with dead lock



K8103 On-Slab small club facilities



Sport Facilities



Coaches' and players' shelter On-Slab Structure

SPORTS FACILITIES (K8110 and K8111)

Perspective gives insight. This steel structure doubles as both a coaches' box and a reserves' bench. A scoreboard/storage option is also available.



General specifications

Materials	Finishes	Fixings
<ul style="list-style-type: none"> Pre-cut Colorbond® custom orb roof sheeting – XRW grade Hot-dipped galvanised steel roof frame and posts Duragal steel clipboard holder/rest (2100mm long) (K8110 only) Compressed fibre cement flooring with non-slip paint to first floor Perforated mesh panels (upper panel) Duragal sheeting panels (lower panel) 		<ul style="list-style-type: none"> Bolt-down posts Stainless-steel anti-vandal fastening system Brackets and fixings galvanised steel
Options		
<ul style="list-style-type: none"> Roof colour 	<ul style="list-style-type: none"> Powder-coating or two-pack finishes on posts, frame and clipboard 	<ul style="list-style-type: none"> Stainless steel brackets and fixings Lockable roller door (2.7w x 4.2h) (K8111 only) Seating on ground floor



K8110 Coaches' and players' shelter (with optional seating)

CONFIDENCE AND COMPLIANCE

- Engineers certification and building application drawings
- Comprehensive installation instructions
- Delivery to site
- Precision manufactured components and hardware
- Pre-processed manufacturing

STANDARD
ROOF

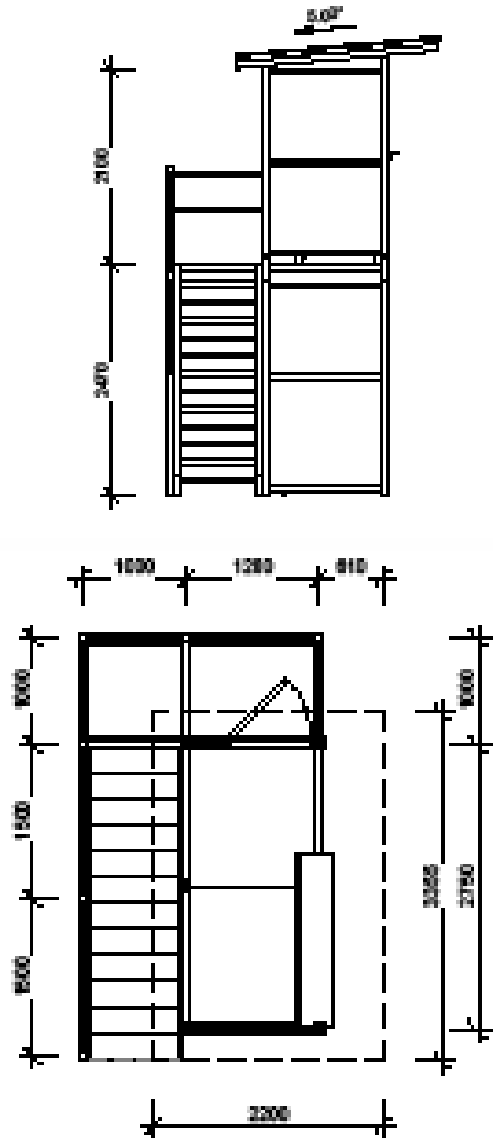




K8110 Coaches' and players' shelter (with optional seating)



K8111 Designed for time keeper, scoreboard attendant and utilities (line-marking, padding) storage facility, shown with roller door open



K8110 SERIES



Ask us about our installation service



Sport Facilities



Cubicle fitout

Standard and optional items

Match the cubicle up with the icon shown on the sports facility floor plans throughout this brochure.

There are three standard cubicles available for Landmark sporting facilities.

To meet standards, prescribed combinations of cubicles must be in the one structure. For example, if there is only one cubicle, it must be a “disabled cubicle”.

On this page are the standard and optional inclusions in each of the cubicle types (as indicated on each floorplan). Size standards can also apply to each type.

Disabled Cubicle



Standard fitout items

- GR304 Stainless steel disabled pan with back rest, disabled handrails, plastic cistern and stainless steel pan flush button flashing.
- Standard Landmark toilet roll holder
- Chrome plated coat and hat hook with rubber cap.
- GR316 Stainless steel shelf.
- GR304 Stainless steel basin with a self-closing lever action cold water tap (no shroud as standard – see option).
- Signage – AS1428.1 Compliant

Optional fitout items

- Vertical polyethylene baby change table.
- GR 316 Stainless steel mirror
- Adult change table (requires larger cubicle/building footprint)
- Basin shroud (colorbond or stainless steel)
- Disabled complaint shower (requires larger cubicle/building footprint)
 - Hand held shower including an adjustment rail with mixer tap and floor waste.
 - Fold down 960mm shower seat with a stainless steel frame and a plastic seat.

Ambulant Cubicle



Standard fitout items

- GR304 Stainless steel ambulant pan with ambulant handrails, plastic cistern and stainless steel pan flush button flashing.
- Standard Landmark toilet roll holder
- Chrome plated coat and hat hook with rubber cap.
- GR304 Stainless steel basin with a spring closing cam or button action cold water tap (no shroud as standard – see option).
- Signage – AS1428.1 Compliant

Optional fitout items

- Basin shroud (colorbond or stainless steel)

Standard Cubicle



Standard fitout items

- GR304 Stainless steel standard pan with plastic cistern and stainless steel pan flush button flashing.
- Standard Landmark toilet roll holders

Optional fitout items

- Basin shroud (colorbond or stainless steel)
- Signage – AS1428.1 Compliant

Other options



- Urinals (tear drop or trough)
- Brass vandal proof keyed tap with hose mount (external or in service duct).
- Hot Water Systems
 - Electric instant or electric storage units
- Porcelain toilets and basins
- Hand Dryers (electric)
- Paper towel and soap dispensers
- Sharps Containers



More Information



INTERNAL AND EXTERNAL WALL SHEETING OPTIONS

STANDARD

- Horizontal Custom Orb

OPTIONAL

- Vertical Colorbond®
- Plywood (9mm or 12mm) – stained or painted
- Fibre Cement Sheeting (9mm or 12 mm) painted on-site
- Aluminium Composite Material sheeting
- Other Colorbond® profiles

PRACTICALITY OF SERVICE DUCTS

All Landmark sporting facilities come standard with lockable service ducts. These give maintenance workers or repairmen ready access to all toilet services, and also keep these services secure from vandalism. They can also act as an extra storage area.



STRUCTURAL RATING UPGRADES FOR CYCLONE REGIONS

By default, all Landmark sporting facilities are designed to comply with a wind rating which is consistent with standards required for non-cyclonic regions of Australia.

Assessing the appropriate wind rating for the location of a shelter requires considering the surrounding terrain, the topographic effect, shielding and design factors.

Landmark Products will manage this entire process, and if necessary, design your structure with a ratings upgrade.

STAINLESS STEEL ANTI-VANDAL FASTENING SYSTEM

Comes with a matching key, the system deters vandals, and reduces theft and destruction.



ROOFING UPGRADE FOR HIGH CORROSIVE ENVIRONMENTS

For structures built in highly corrosive environment, such as near a beach or estuary, Landmark will recommend upgrading the upgrade of steel roofing to Colorbond® Ultra™.

Ultra™ comes in only four colours (see Roofing Colour chart on website).



TRACEABILITY PLAQUE

All Landmark products carry an individual serial number so all product information is readily available in the event of maintenance requirements.

THE LANDMARK ATLAS

If a sporting facilities in the catalogue doesn't meet your specific need, ask your Project Consultant about the Landmark Atlas, a comprehensive directory of pre-engineered, completed modified and custom designs.



CERTIFICATIONS

IS ISO 9001 Certified

This internationally recognised accreditation assures the highest quality standard of manufacture - Landmark is safe, consistent, meets customer expectations, continuously improves and complies with the law.

IS BS OHSAS 18001:2007 Certified

This international Occupational Health and Safety Management certification demonstrates Landmark Products' commitment to sound occupational health and safety performance.

All Landmark structures meet or exceed the National Construction Code (NCC), and other relevant Australian standards including:

- AS1170 Structural Design Actions
- AS 1428.1 Design for Access and Mobility
- AS 1720 Timber Structures
- AS 4100 Steel Structures
- Other relevant codes.

Materials and Finishes

All materials used in our sports facilities are sourced from carefully selected suppliers, known for consistent quality. As a certified ISO 9001 manufacturer offering a 25-year limited structural warranty, Landmark is committed to the highest quality processes to produce consistent, reliable products.



TIMBER

All our timber components are factory stained with our standard CD50 oil-based stain.

Pine: Our premium quality plantation hoop pine is stabilised and treated with safe Light Organic Solvent Preservatives (LOSP) to Hazard Level 3. LOSP treatment is used for structures subject to moist environments, preventing fungal decay of timber.

Hardwood: Our hardwood is select grade, sustainably harvested Western Queensland Hardwood (Spotted Gum or similar), ACQ treated to Hazard Level 4. Hardwood is graded F14 or better (the majority being F17). Ammoniacal Copper Quaternary (ACQ) preservative treatment provides greater safety of storage and application than CCA, yet retains similar performance. Landmark do not recommend painting hardwood.

Rosewood, an attractive and long-lasting timber, is used for timber screens. This too can be stained.

METAL

Steel: Mild-steel, hot-dipped galvanised to comply with AS/NZ 4680 standard, steel can be powder-coated to provide hard-wearing protection and a colourful, attractive finish. For higher level protection, two-pack epoxy paint or thermoplastic coatings can be applied.

Aluminium: Chosen for its resistance to corrosion, aluminium is about 30% as strong as steel, so used selectively.

DOWNLOADS

A full range of our colour and finish options is available at: landmarkpro.com.au/downloads



EPOXY/TWO PACK COLOURS



PINE PAINT COLOURS



ROOFING COLOUR OPTIONS



POWDER COATING COLOURS



TIMBER COLOUR TONES

Design and Installation



INSTALLATION

All Landmark structures are fabricated to be easy-to-install, delivered either fully constructed or in kit form with instructions that makes on-site installation faster with less noise, lower environmental impact.

Our products take days or weeks to install on-site where traditional construction methods can take weeks or months.

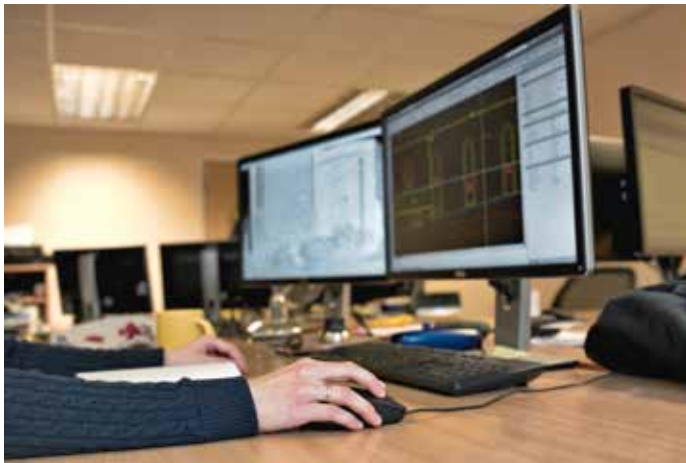
Landmark's Installation Service includes both project management and the actual installation of the structures, with our own highly experienced installers and a select group of sub-contractors at the ready. Landmark is a licenced builder.

Project Management

Our dedicated Project Managers oversee the delivery and installation process with great attention to detail and quality. They are skilled professionals with experience in relevant construction methods.

On-Site

Landmark installation teams are highly skilled professionals with many years of building and construction experience. They are committed to providing a safe site environment for both themselves and the community.



DESIGN SERVICES

Although we have an extensive range of standard products (which can be modified to your needs), when it comes to custom products, our design process starts with our customers.

A concept that starts in the mind of a developer, an urban planner or landscape architect, can become a place of community and a hub of activity thanks to collaboration with Landmark's experienced design specialists.

For custom work, Landmark's talented design team listen and seek a full understanding of the vision and purpose of each project. The starting point can be an in-depth consultation session, client's providing a few squiggles on a page, or a comprehensive set of CAD drawings.

Whatever the starting point, Landmark's design team can "add flesh to the bones", and begin to add the intricate specifics and attention-to-detail needed to complete a project that, at the very least, meets our customers' needs. Ultimately our aim is to exceed expectations.

When it comes to bigger projects, Landmark Products understand that collaboration with other professionals is the key to cutting-edge, multi-faceted design, and our track record of working with landscape architects, urban designers, various consultants and other infrastructure specialists is second-to-none.



landmarkpro.com.au | sales@landmarkpro.com.au | 1300 768 230