



QUATRO
DESIGN™



LE BAIN

CAVCORP.
LE BAIN, NEWSTEAD



“Early on Quatro Design understood our vision and concepts and came up with ideas and guidelines that would ultimately become part of our final design.”

– Stanley Sclavos

CAVCORP.

Cavcorp is a multi-award winning Brisbane based developer specialising in luxury multi-residential, as well as retail and commercial projects. Over the past 15 years, Cavcorp has played a pivotal role in the urban renewal of Newstead's \$2 billion masterplan at Gasworks.

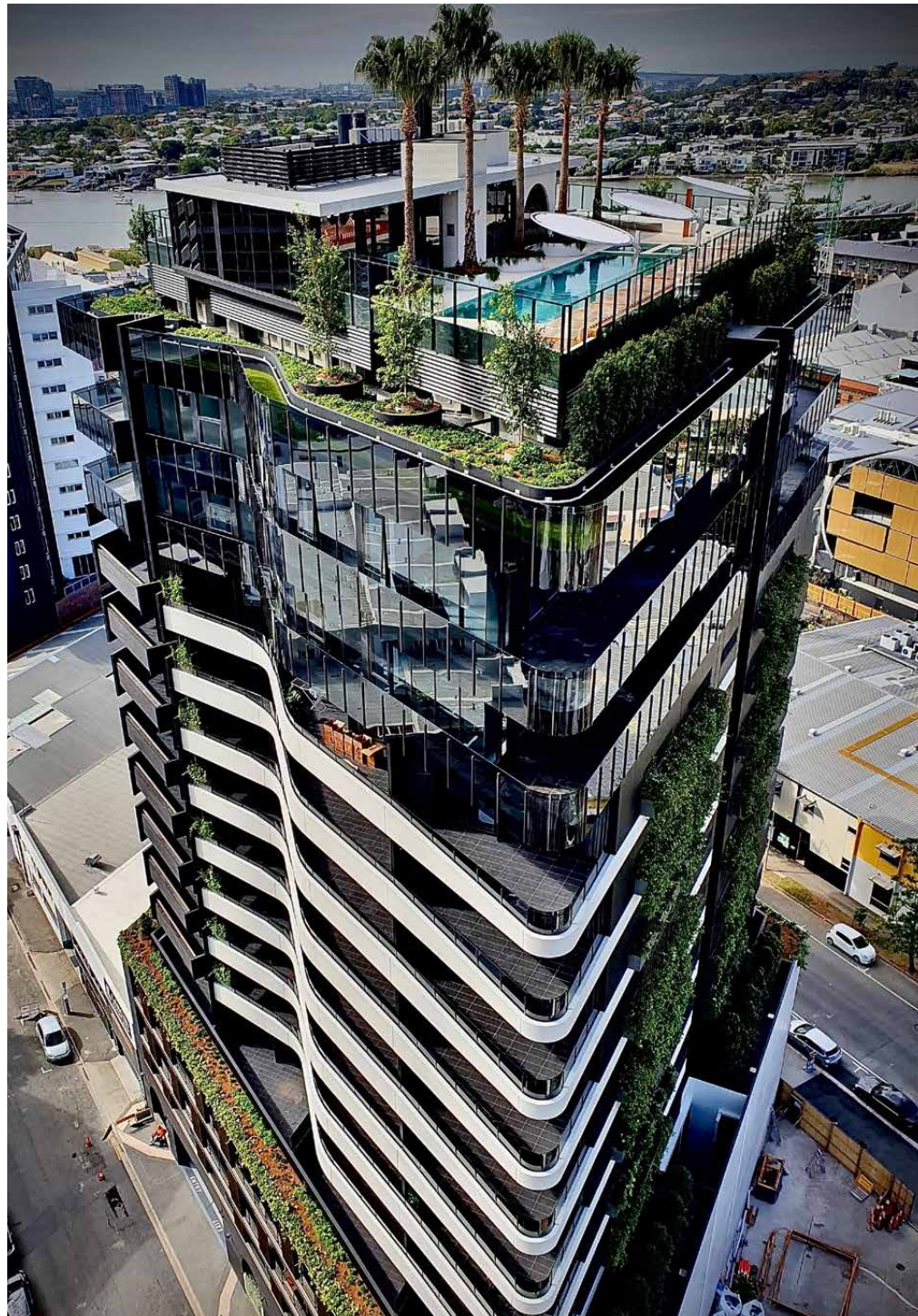
Their development – Lucent has received national praise, winning 'Australia's Best High Rise Building 2018' at the Master Builders National Awards and 'Urban Renewal State Winner' at the UDIA Qld Awards 2018.

LE BAIN

NEWSTEAD, BRISBANE

Le Bain has raised the benchmark of architectural excellence. This sculptural building, with its curved balcony forms and considered landscaping connecting the ground floor and podium levels, has enormous streetscape appeal. The signature rooftop oasis was curated with fitness, wellness and community in mind.

Le Bain commenced construction in 2017 and has allowed Cavcorp to create a true vertical community that caters for all demographics of Brisbane whilst providing a unique lifestyle experience for all residents.



CUSTOM HANGING PLANTERS

Le Bain's signature hanging garden facade was a key architectural design feature from the start. The challenge was to find a planter and installation method that had barely visible steel supports or brackets, as not to detract from the hanging gardens when viewed from the street level below.

Cavcorp and Torre Developments also needed a planter that was versatile, adaptable, waterproof and most importantly had a sleek and refined exterior finish to seamlessly integrate with the building's modern exterior.

Glassfibre Reinforced Concrete (GRC) was the perfect solution for the planters, as it is not only water resistant but also lightweight when compared to traditional cast-concrete. GRC planters are robust enough to provide support for holding soil and plants, requires minimal structural additions and has an aesthetically pleasing smooth exterior finish.

CUSTOM DESIGN AND MANUFACTURING

Quatro Design worked collaboratively with Cavcorp and Torre Developments' design and engineering teams on their conceptual ideas and assisted with the design of custom planter boxes that could hang from the side of the building.

We also helped develop a range of narrow tall planter boxes used as integrated balcony planters.

All custom planter boxes were manufactured at our factory in Murwillumbah, NSW and were delivered on time to meet project deadlines.

The design process and final products delivered, far exceeded Cavcorp's expectations, and we are already in discussion to assist with their future projects.





Quatro Design's outstanding product quality, combined with our design excellence, made us the obvious choice when searching for planter solutions to compliment Le Bain's iconic design theme.

Our custom design ability and truly timeless and beautiful standard product ranges cemented our collaborative relationship with Cavcorp and Torre Developments early on. We are proud to have been involved with yet another signature Newstead development by this powerhouse team.

Our customer service and the assistance provided at every step from design and manufacturing through to delivery, has built a long-lasting relationship between our companies and we are already in talks to provide assistance with Luminare, their latest 28 level offering.

The design and planning phase for Luminare is currently being finalised with our planter boxes being specified for their envisioned wall of planters, which will cover two sides of the building and span 26 levels. They hope to create a wall of sleepers and creepers that travel up the building to create another Cavcorp-signature innovative architectural benchmark in New Farm, Brisbane.

SIGNATURE CYLINDER PLANTERS

Le Bain's signature rooftop was curated to create an urban oasis in the sky which features a fitness studio with Technogym equipment, a yoga lawn, heated infinity pool with twin spa baths and even has an organic vegetable garden.

Our sophisticated and contemporary 1800 Cylinder planters form the central focal point of this world-class rooftop and house four large palm trees and ground covers to create a dramatic backdrop against the Brisbane skyline.



CREDITS

We would like to thank Michael Cavalluci and Jimmy Huynh from Cavcorp and Stanley Sclavos from Torre Developments for the assistance provided in creating this feature project case study.

Le Bain photography by Cieran Murphy.

©2021 Quatro Design Pty Ltd. All rights reserved.

This document, including all of its contents, photographs, diagrams, drawings or representations contained, is the exclusive property of Quatro Design Pty Ltd. All information contained in this document is sensitive confidential information of Quatro Design Pty Ltd, and may also represent confidential and legally protected and enforceable industrial or intellectual property of Quatro Design Pty Ltd. No part of this document, including any photographs, diagrams, drawings or representations, may be reproduced, republished or otherwise disclosed or distributed without prior written consent of Quatro Design Pty Ltd. Document Reference: CAV10/2021



WHERE LANDSCAPE MEETS ARCHITECTURE®

QUATRODESIGN.COM.AU