



# QuietForm™ Tiles

FilaSorb™ 12

acoufelt  
making quiet

# Product Detail

Application	Wall
Composition	100% Polyester
Material	FilaSorb™
Recycled Content	60% min.
Dimensions	600 x 600mm
Thickness	12mm with depth to 7.5mm +/- 1mm
Weight	2400g/m <sup>2</sup> +/- 10%
Tiles Per Box	8 Tiles (2.88sqm <sup>2</sup> )

# Guarantees

Warranty Against Defects	20 years*
Color Fastness Warranty	20 years*
	* conditions apply

# QuickShip

QuickShip Custom



Custom products have an approx. **6-8 week** lead time from payment and order confirmation.

# Technical Data

Fire Rating	AS/ISO 9705-1, Group 1 ASTM E84-17a, Class A EN 13501-1: 2019, B-s1, d0
Indoor Air Quality	SCS-EC10.3-2014 v4.0 meeting standard CDPH/EHLB Standard Method v.1.2-2017, ≤ 0.5mg/m <sup>3</sup>
Color Fastness	ISO 105-B02, 6-7

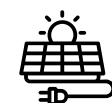
# Sustainability



Made from 60% min. recycled content



Red List Free Declare Label (3rd Party Verified)



Generated using 40% solar energy



Recyclable at end-of-life



Total VOC's less than 0.5 mg/m<sup>3</sup> (3rd Party Verified)



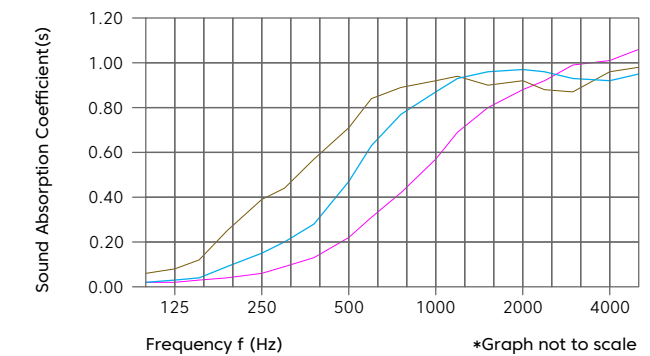
Phenol & formaldehyde free



Declare.

# Acoustic Performance

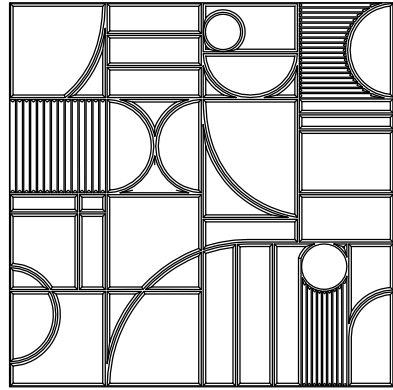
Test Method	ISO 354-2006
Results	<b>NRC 0.45 (no air gap)</b> <b>NRC 0.60 (20mm air gap)</b> <b>NRC 0.75 (50mm air gap)</b>



Frequency f(Hz)	125	250	500	1000	2000	4000	NRC
<sup>a<sub>s</sub></sup> no air gap	0.02	0.06	0.21	0.57	0.88	1.01	0.45
<sup>a<sub>s</sub></sup> 20mm air gap	0.03	0.15	0.47	0.87	0.97	0.92	0.60
<sup>a<sub>s</sub></sup> 50mm air gap	0.08	0.39	0.71	0.92	0.92	0.96	0.75

# Eclipse Pattern

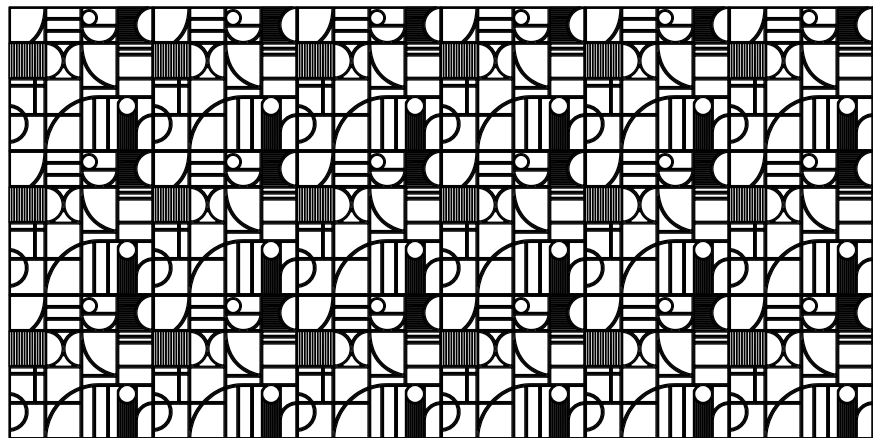
---



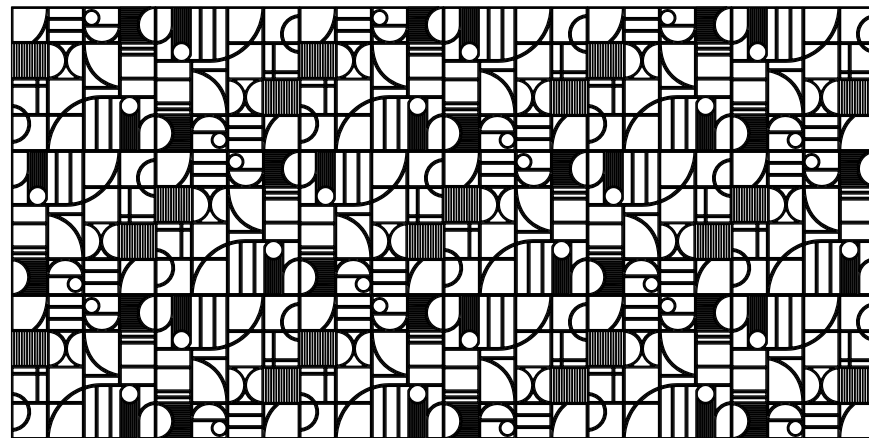
## Recommended Layouts

---

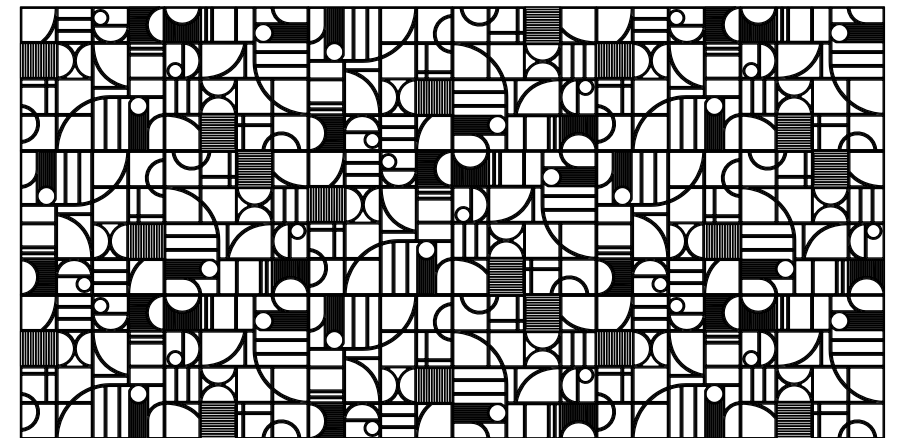
Layout 1



Layout 2

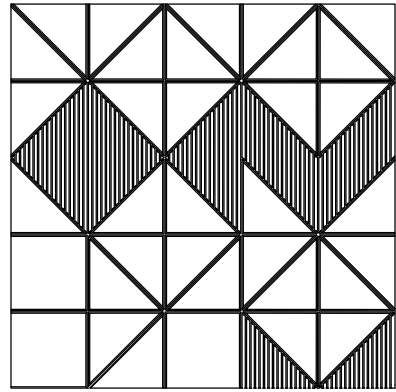


Layout 3



# Spatial Pattern

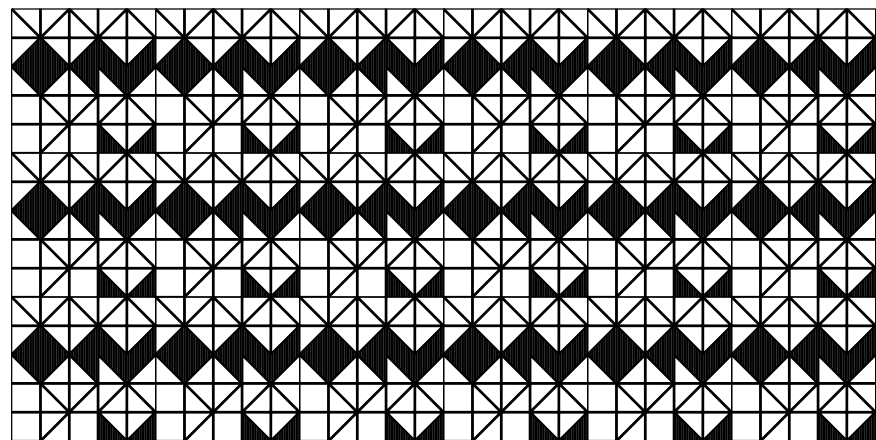
---



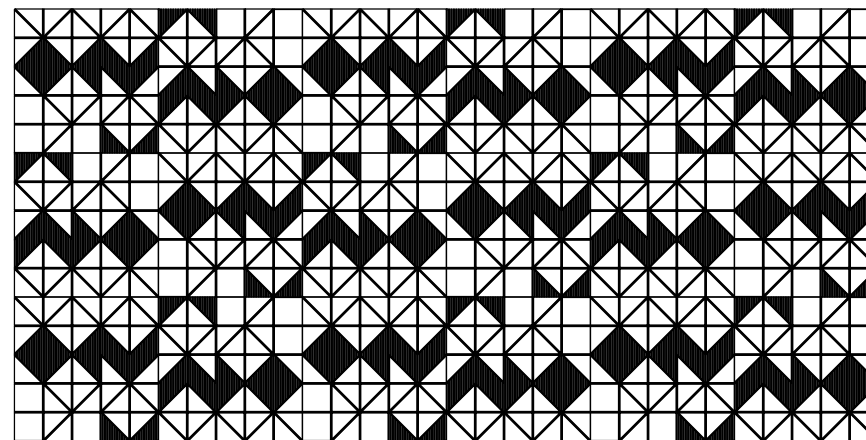
## Recommended Layouts

---

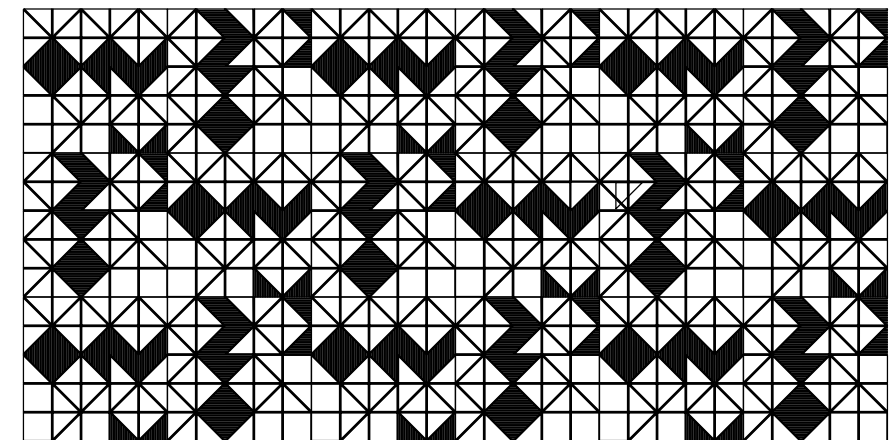
Layout 1



Layout 2

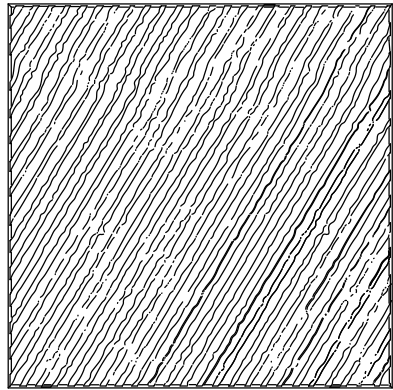


Layout 3



# Dune Pattern

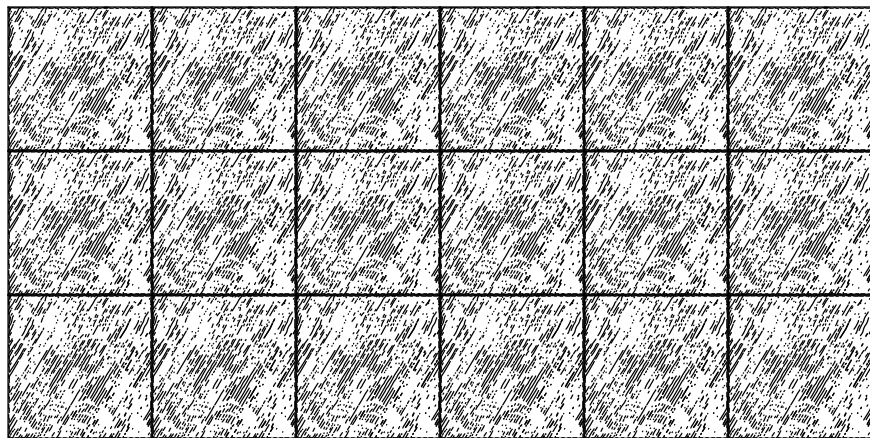
---



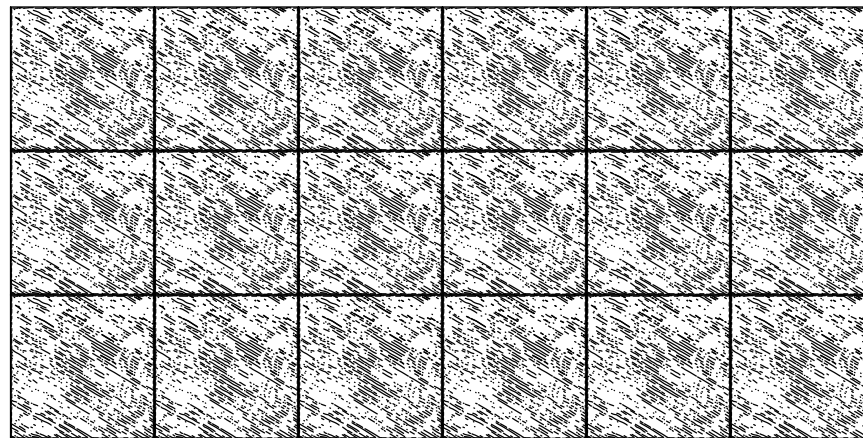
## Recommended Layouts

---

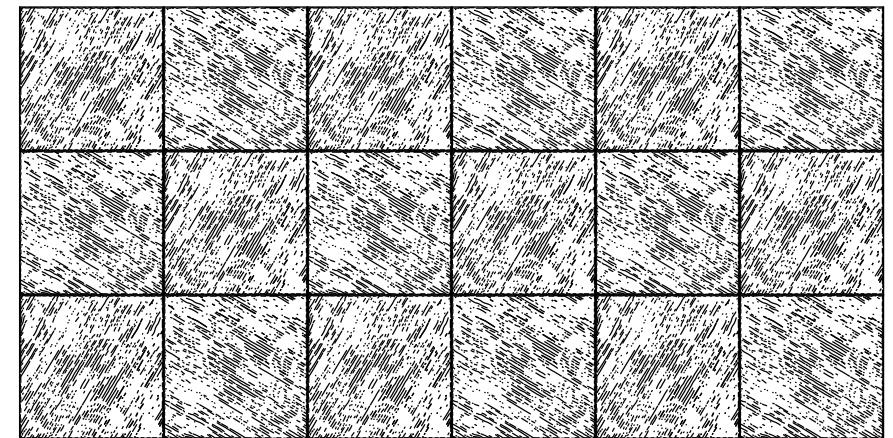
Layout 1



Layout 2

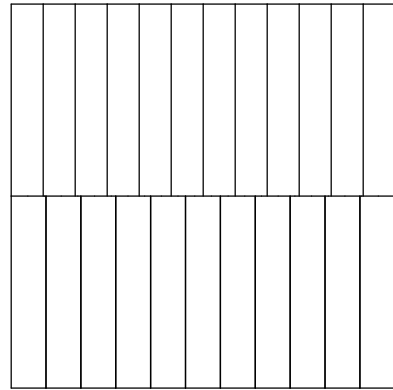


Layout 3



# Pillar Pattern

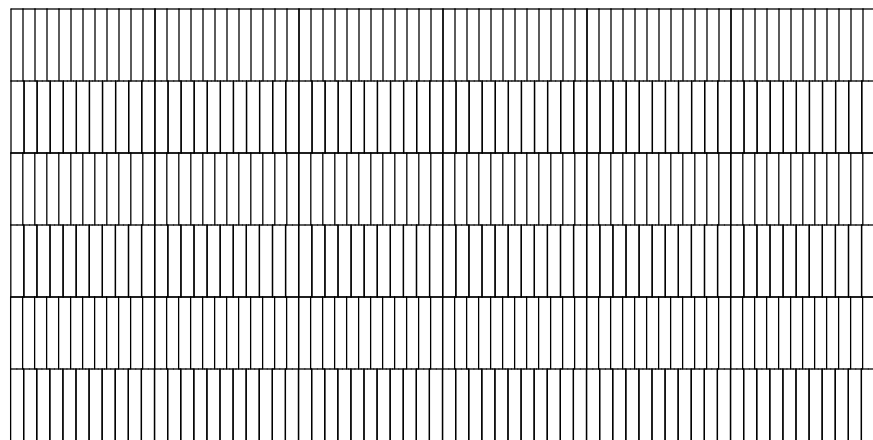
---



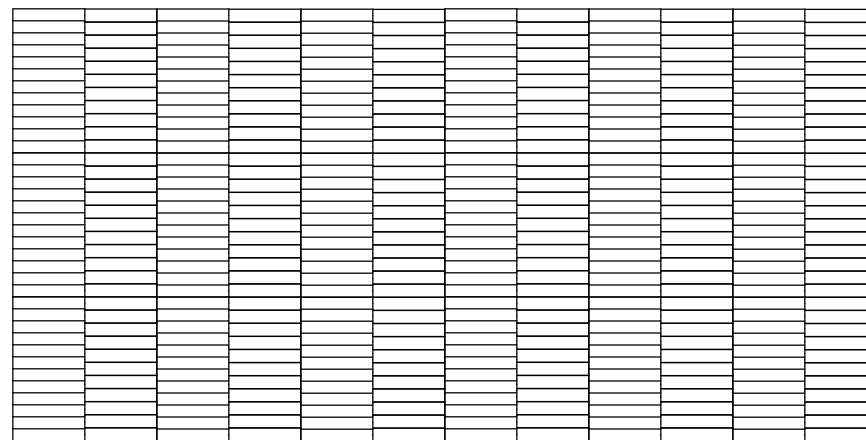
## Recommended Layouts

---

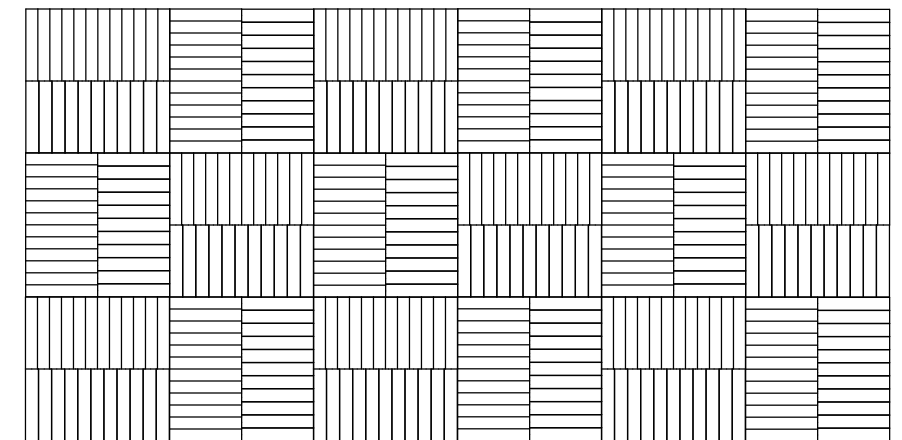
Layout 1



Layout 2

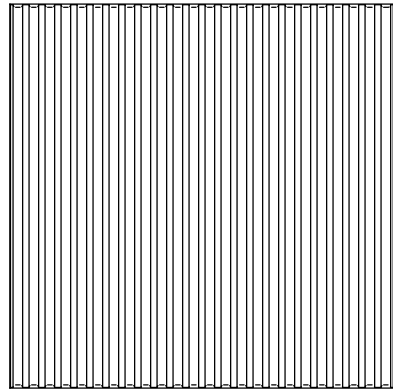


Layout 3



# Pole Pattern

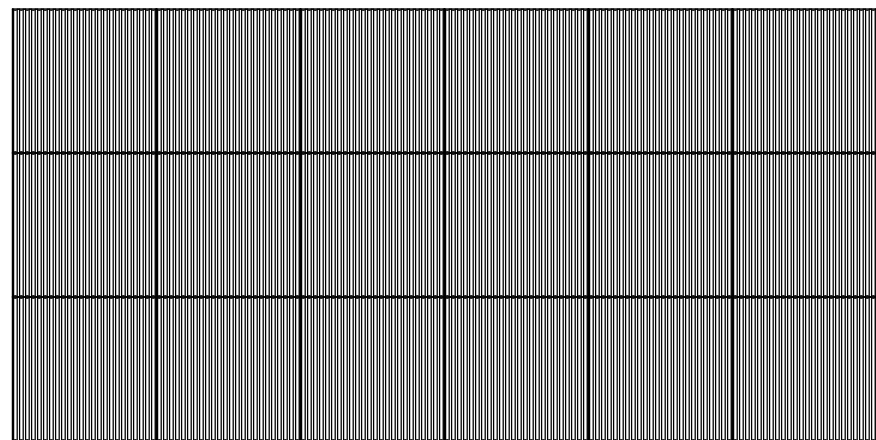
---



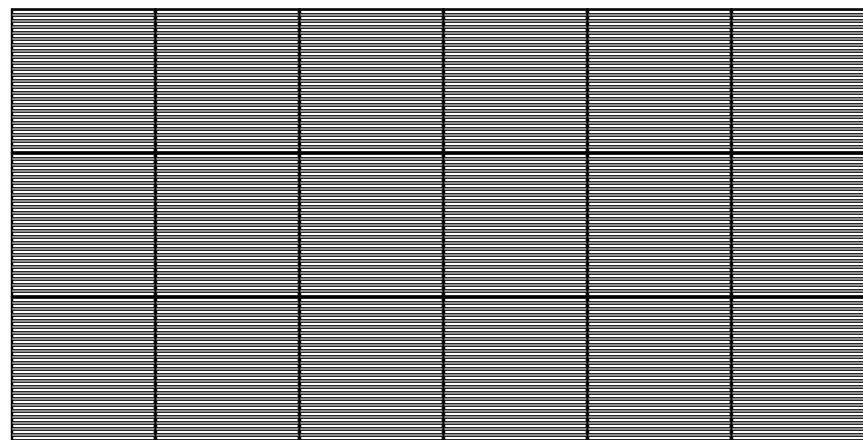
## Recommended Layouts

---

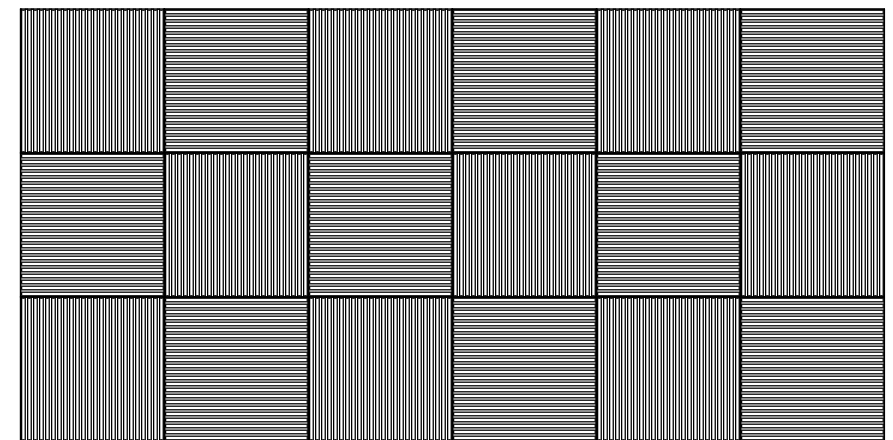
Layout 1



Layout 2



Layout 3



# Colorways

Light Reflectance Values (LRV), are a measure of the percentage of visible and usable light that is reflected from a surface when illuminated by a light source.

										
Celery LRV - 43.64%	Flint LRV - 5.14%	Shiraz LRV - 3.99%	Quartz LRV - 36.85%	Peppercorn LRV - 8.50%	Currant LRV - 7.04%	Carrot LRV - 20.00%	Peach LRV - 29.00%	Flamingo LRV - 37.54%	Turmeric LRV - 29.59%	Popcorn LRV - 65.00%
										
Kale LRV - 4.50%	Oregano LRV - 8.80%	Thistle LRV - 13.00%	Wasabi LRV - 38.00%	Sencha LRV - 34.15%	Pistachio LRV - 30.00%	Midnight Blue LRV - 3.50%	Granite LRV - 6.40%	Denim LRV - 6.00%	Peacock LRV - 19.00%	Azur LRV - 18.00%
										
Marine LRV - 25.00%	Periwinkle LRV - 36.00%	Sea Salt LRV - 28.56%	Lilac LRV - 39.00%	Iris LRV - 10.50%	Berry LRV - 12.00%	Piano Black LRV - 3.00%	Charcoal LRV - 5.46%	Slate LRV - 12.50%	Grey LRV - 27.00%	Metal LRV - 35.00%
										
Platinum LRV - 42.00%	Walnut LRV - 12.14%	Umber LRV - 20.35%	Almond LRV - 53.64%	Ivory LRV - 40.00%	Pearl LRV - 54.00%	White LRV - 83.22%	Lipstick Red LRV - 12.50%	Butter LRV - 62.00%		



# Mounting Methods

---

## Construction Adhesive

