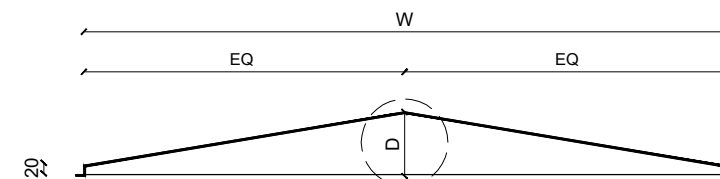


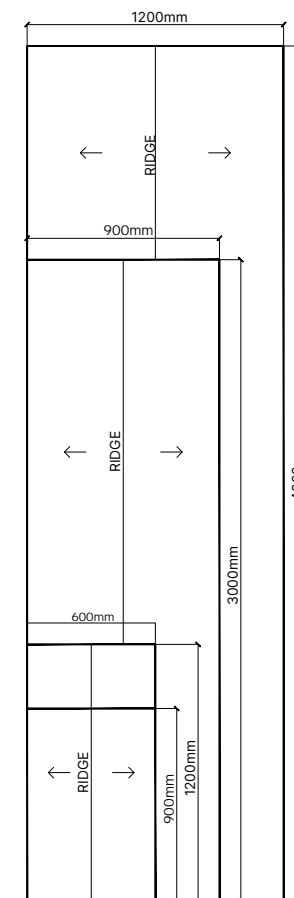
TEGO® RIDGE

Model	TEGO® RIDGE
Product Code	TEGO® R60 R90 R120
Thickness	T3® (3mm)
Material	Certified Low Carbon Aluminium
Carbon Footprint	7.1kgCO ₂ e Certified CQM2023CFP193
Coating Process	Post applied coating after mill metal formed modules
Recyclability Content	100% cradle to cradle recyclable product
Module Stiffeners	Mechanically Fixed
Corner Treatment	Smartwelded Corners
Joint Type	Dry Joint (Rainscreen) or Wet Seal (Concealed)
Joint Width	12-15mm (Custom)

Depth (D) mm 60, 90, 120, Custom	Width (W) mm 600, 900, 1200, Custom	Length (L) mm 900, 1200, 3000, 4000, Custom
--	---	---



TEGO® MODULE SIZES



Attachment Methods:

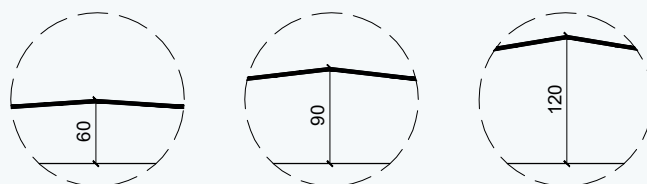
Mechanically fixed through perimeter SOLIDAL® folded flange to sub-frame. (Cleat system optional)

Colours and Finishes:

Powder Coat (Akzonobel Interpon / Dulux Duratec, Fluoraset) or PVDF Wet Spray (P.P.G.) in unlimited colours. Anodised finish. (Colour matching available)

Compliance:

Non-combustible NCC2019C1.9.
NATA AS1530.1 & AS1530.3 Certified



TEGO® PRODUCT CODE

TEGO® R60

TEGO® R90

TEGO® R120

Supplier: SOLIDAL®

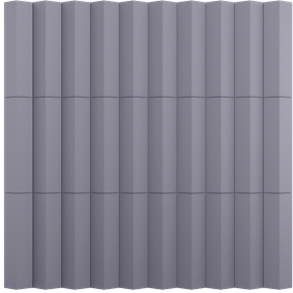
Phone number: 1300 252 325

Email: info@solidal.com

SPECIFICATION EXAMPLE:

Project X

EXTERNAL FINISHES SCHEDULES

CODE	MATERIAL	AREA	DESCRIPTION	COMMENTS	IMAGE	SUPPLIER	REV
EXTERNAL CLADDING							
EC-100	Aluminium Facade Cladding	Facade	<p>Model: TEGO® RIDGE Product Code: Mixed R60, R90, R120 TBC Thickness: T3® (3mm) Corners: Smartwelded Module Stiffeners: Mechanically Fixed Joint Type: Dry Joint (Rainscreen) Colour: Powdercoat Matt finish / Monument TBC</p>	<p>Coating Process: Post applied coating after mill metal formed modules Compliance: Non-combustible NCC2019C1.9. / NATA AS1530.1 & AS1530.3 Certified Material: Certified Low Carbon Aluminium Recyclability Content: 100% cradle to cradle recyclable product Carbon Footprint: 7.1kgCO_{2e} Certified CQM2023CFP193</p>		<p>SOLIDAL® info@solidal.com 1300252325</p> <p>NOTE: No alternative products or systems will be accepted.</p>	1

TEGO® RIDGE OFFSET LEFT

Model	TEGO® RIDGE OS LEFT
Product Code	TEGO® ROS60L ROS90L ROS120L
Thickness	T3® (3mm)
Material	Certified Low Carbon Aluminium
Carbon Footprint	7.1kgCO ₂ e Certified CQM2023CFP193
Coating Process	Post applied coating after mill metal formed modules
Recyclability Content	100% cradle to cradle recyclable product
Module Stiffeners	Mechanically Fixed
Corner Treatment	Smartwelded Corners
Joint Type	Dry Joint (Rainscreen) or Wet Seal (Concealed)
Joint Width	12-15mm (Custom)

Attachment Methods:

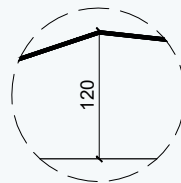
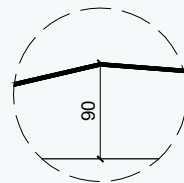
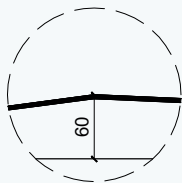
Mechanically fixed through perimeter SOLIDAL® folded flange to sub-frame. (Cleat system optional)

Colours and Finishes:

Powder Coat (Akzonobel Interpon / Dulux Duratec, Fluoraset) or PVDF Wet Spray (P.P.G.) in unlimited colours. Anodised finish. (Colour matching available)

Compliance:

Non-combustible NCC2019C1.9.
NATA AS1530.1 & AS1530.3 Certified



TEGO® PRODUCT CODE

TEGO® ROS60L

TEGO® ROS90L

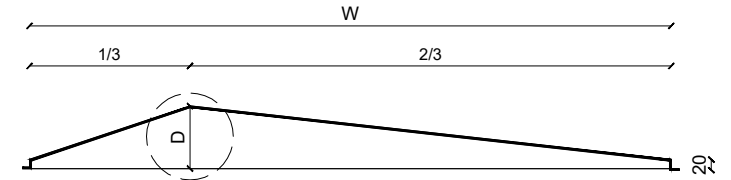
TEGO® ROS120L

Supplier: SOLIDAL®

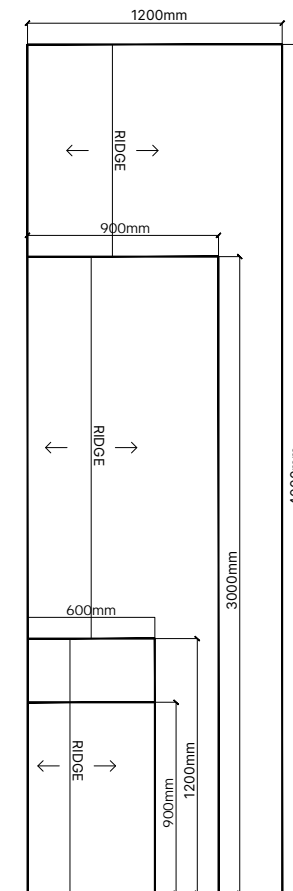
Phone number: 1300 252 325

Email: info@solidal.com

Depth (D) mm 60, 90, 120, Custom	Width (W) mm 600, 900, 1200, Custom	Length (L) mm 900, 1200, 3000, 4000, Custom
--	---	---



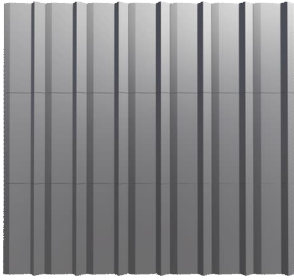
TEGO® MODULE SIZES



SPECIFICATION EXAMPLE:

Project X

EXTERNAL FINISHES SCHEDULES

CODE	MATERIAL	AREA	DESCRIPTION	COMMENTS	IMAGE	SUPPLIER	REV
EXTERNAL CLADDING							
EC-100	Aluminium Facade Cladding	Facade	<p>Model: TEGO® RIDGE OFFSET LEFT Product Code: Mixed ROS60L, ROS90L, ROS120L TBC Thickness: T3® (3mm) Corners: Smartwelded Module Stiffeners: Mechanically Fixed Joint Type: Dry Joint (Rainscreen) Colour: Powdercoat Matt finish / Monument TBC</p>	<p>Coating Process: Post applied coating after mill metal formed modules</p> <p>Compliance: Non-combustible NCC2019C1.9. / NATA AS1530.1 & AS1530.3 Certified</p> <p>Material: Certified Low Carbon Aluminium</p> <p>Recyclability Content: 100% cradle to cradle recyclable product</p> <p>Carbon Footprint: 7.1kgCO₂e Certified CQM2023CFP193</p>		<p>SOLIDAL® info@solidal.com 1300252325</p> <p>NOTE: No alternative products or systems will be accepted.</p>	1

TEGO® RIDGE OFFSET RIGHT

Model	TEGO® RIDGE OS RIGHT
Product Code	TEGO® ROS60R ROS90R ROS120R
Thickness	T3® (3mm)
Material	Certified Low Carbon Aluminium
Carbon Footprint	7.1kgCO ₂ e Certified CQM2023CFP193
Coating Process	Post applied coating after mill metal formed modules
Recyclability Content	100% cradle to cradle recyclable product
Module Stiffeners	Mechanically Fixed
Corner Treatment	Smartwelded Corners
Joint Type	Dry Joint (Rainscreen) or Wet Seal (Concealed)
Joint Width	12-15mm (Custom)

Attachment Methods:

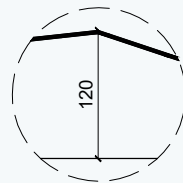
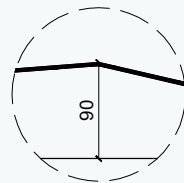
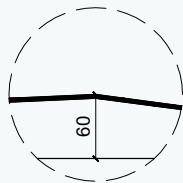
Mechanically fixed through perimeter SOLIDAL® folded flange to sub-frame. (Cleat system optional)

Colours and Finishes:

Powder Coat (Akzonobel Interpon / Dulux Duratec, Fluoraset) or PVDF Wet Spray (P.P.G.) in unlimited colours. Anodised finish. (Colour matching available)

Compliance:

Non-combustible NCC2019C1.9.
NATA AS1530.1 & AS1530.3 Certified



TEGO® PRODUCT CODE

TEGO® ROS60R

TEGO® ROS90R

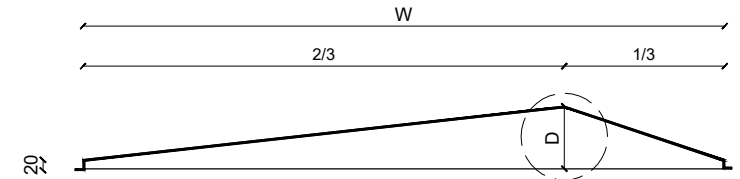
TEGO® ROS120R

Supplier: SOLIDAL®

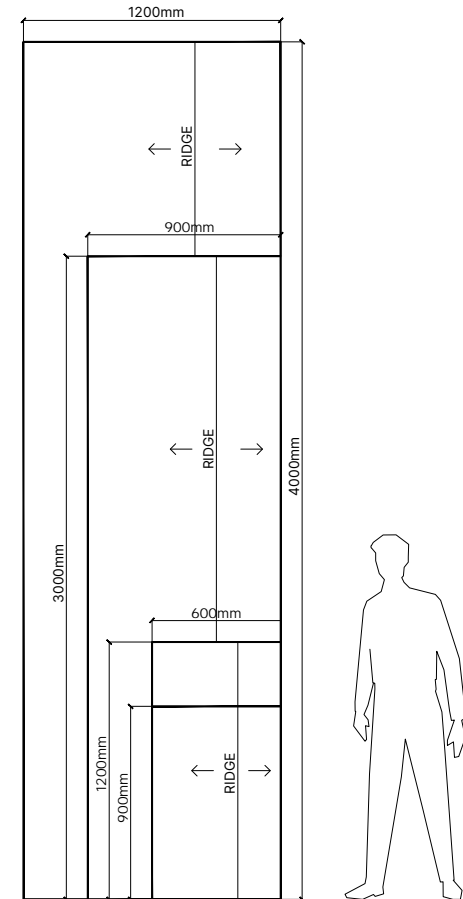
Phone number: 1300 252 325

Email: info@solidal.com

Depth (D) mm 60, 90, 120, Custom	Width (W) mm 600, 900, 1200, Custom	Length (L) mm 900, 1200, 3000, 4000, Custom
--	---	---



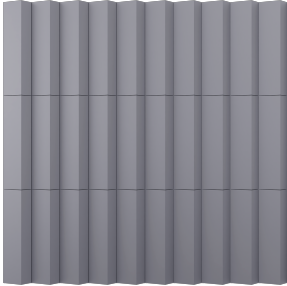
TEGO® MODULE SIZES



SPECIFICATION EXAMPLE:

Project X

EXTERNAL FINISHES SCHEDULES

CODE	MATERIAL	AREA	DESCRIPTION	COMMENTS	IMAGE	SUPPLIER	REV
EXTERNAL CLADDING							
EC-100	Aluminium Facade Cladding	Facade	<p>Model: TEGO® RIDGE OFFSET RIGHT Product Code: Mixed ROS60R, ROS90R, ROS120R TBC Thickness: T3® (3mm) Corners: Smartwelded Module Stiffeners: Mechanically Fixed Joint Type: Dry Joint (Rainscreen) Colour: Powdercoat Matt finish / Monument TBC</p>	<p>Coating Process: Post applied coating after mill metal formed modules</p> <p>Compliance: Non-combustible NCC2019C1.9. / NATA AS1530.1 & AS1530.3 Certified</p> <p>Material: Certified Low Carbon Aluminium</p> <p>Recyclability Content: 100% cradle to cradle recyclable product</p> <p>Carbon Footprint: 7.1kgCO₂e Certified CQM2023CFP193</p>		<p>SOLIDAL® info@solidal.com 1300252325</p> <p>NOTE: No alternative products or systems will be accepted.</p>	1