

**WHERE BEAUTY,  
QUALITY AND COLOUR  
ALL COME TOGETHER**

# PREMIUM FINISHES

## COLORBOND® ULTRA STEEL

SURFMIST™	WOODLAND GREY™
DUNE™	MONUMENT™
WINDSPRAY™	WALLABY™

## COLORBOND® STAINLESS STEEL

SURFMIST™	WINDSPRAY™
DUNE™	DEEP OCEAN™

## COLORBOND® METALLIC STEEL

ARIES™	ASTRO™
RHEA™	COSMIC™
GALACTIC™	CELESTIAN™

## COLORBOND® STEEL MATT

BASALT®	MONUMENT®
SURFMIST®	<i>Dune® and Shale Grey® available on request.</i>

## MAGNAFLOW®

OFF WHITE	ARMOUR GREY
BIRCH	MONOLITH
SLATE GREY	

# STANDARD COLOURS

## COLORBOND® STEEL COLOUR RANGE

MANOR RED™	COTTAGE GREEN™
JASPER™	DEEP OCEAN™
CLASSIC CREAM™	IRONSTONE™
SURFMIST™	MONUMENT™
PAPERBARK™	BASALT™
DUNE™	COVE™
SHALE GREY™	GULLY™
WINDSPRAY™	MANGROVE™
EVENING HAZE™	NIGHT SKY™
WOODLAND GREY™	TERRAIN™
PALE EUCALYPT™	WALLABY™



Many colours and finishes are kept in stock for fast manufacture and delivery. However, some colours and finishes require longer lead times and, in some cases, minimum order quantities. Check with your Stramit Building Products representative before ordering. Note that not all products are available in all finishes.

The COLORBOND® pre-painted steel colours shown in this brochure have been reproduced to represent actual product colours as accurately as possible. However we recommend checking your chosen colour against an actual sample of the product before purchasing as varying light conditions and limitations of the printing process affect colour tones.



# STRAMIT<sup>®</sup> ARCHITECTURAL RANGE

Where beautiful  
design meets quality  
Aussie made\* steel

[stramit.com.au](http://stramit.com.au)

\*Excludes Magnaflow



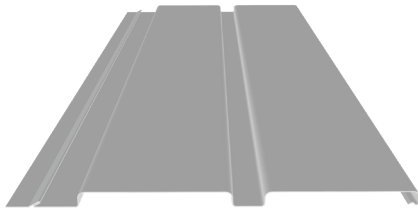
# INTRODUCING THE STRAMIT ARCHITECTURAL RANGE

Beautiful from every angle and made to the highest standard, the range uses high quality Aussie made\* steel. And all in a colour you'll love. Choose from differing covers, pans and finishes to bring your vision to life.

We're also here to help you along the way. Our national team of product and industry experts are available if you need us, whether you need help with specification, product information or field engineering support.

You're also backed by a long-standing commitment to quality. We're one of the few steel roll formers in Australia with our very own state-of-the-art testing facility, which was initially established more than 30 years ago. We know and test for Aussie conditions.

*\*Excludes Magnaflow*



## PREMIER 300

**The architectural panel of choice for commercial structures.**

A stunning profile with a wide cover for those looking for clean, continuous lines on big, commercial canvases. Injects a modern finish to any project, while giving you the choice between vertical or horizontal lines.

*Available QLD, NT.*

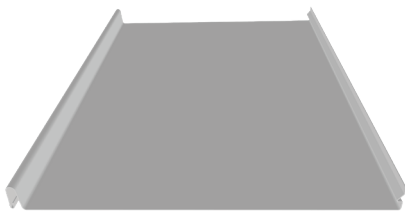


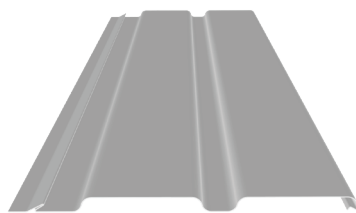
## SHARPLINE™

**Make texture the focal point with beautiful sharp lines, finished off in quality Aussie made steel.**

Sharp, beautiful lines take centre stage with this impressive profile. Crisp wide pans and sharp ribs create a profile that showcases the beauty of simplicity. An adaptable product that is available in a range of sizes, which can also be installed vertically, horizontally or diagonally using various methods.

*Available QLD, NT, NSW, ACT, VIC, SA, TAS.*



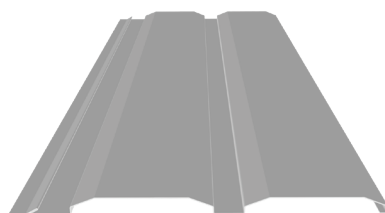
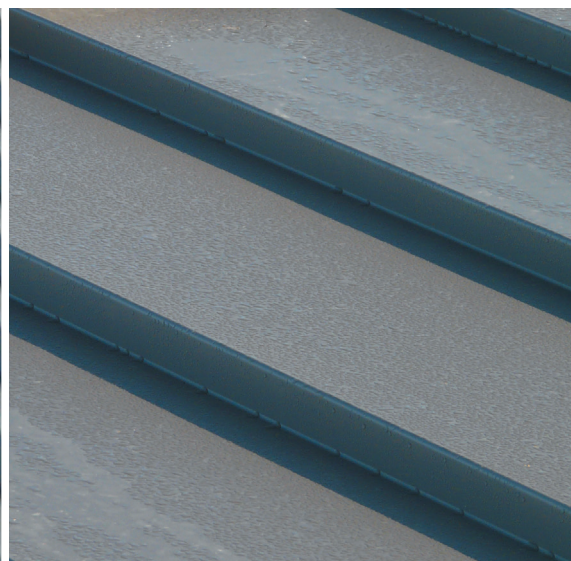


## MONOPANEL®

Featuring an angled rib and flat face, Monopanel® wall cladding is the profile of choice for those looking for clean subtle lines.

With a concealed fixing, this walling profile provides an elegant, yet understated finish to any structure.

*Available NSW, ACT, VIC, SA, TAS.*



## C-CLAD 280

Boasting traditional lines to enhance any structure.

Let your design be the hero with C-Clad 280 wall sheeting. The crisp, traditional lines of this profile will complement any project. Suitable for horizontal and vertical installations, while being designed with durability in mind.

*Available QLD, NT.*