



SIKABOND[®] TIMBER FLOORING

Timber floor adhesive systems

aus.sika.com

BUILDING TRUST



AN INTRODUCTION

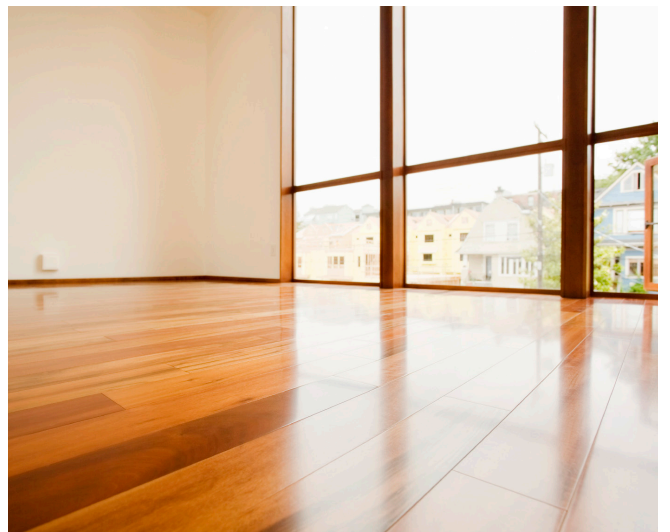
THE SIKABOND TIMBER FLOORING RANGE IS DESIGNED SO THAT IT WILL COVER OFF ALL MAJOR NEEDS AND APPLICATIONS FOR TIMBER FLOORING IN RESIDENTIAL AND COMMERCIAL PROJECTS. THIS MEANS THAT THE SYSTEM COMPRISES A NUMBER OF COMPONENTS THAT CAN BE COMBINED TO PROVIDE THE PERFECT SOLUTION FOR ALL YOUR FLOORING NEEDS

THESE PRODUCTS ARE BROADLY DIVIDED INTO FOUR KEY AREAS:

SUBFLOOR PREPARATION

To create a high quality and long lasting timber floor, you need to make sure that the substrate to which you are applying your timber floor is of a high quality itself.

By using a levelling compound, it is possible to completely refinish your substrate, and re-level your floor. Thanks to Sika's high quality self-levelling technology, you know that when you apply one of our levelling products that the floor will be perfect for timber flooring right away.



SUBSTRATE PRIMING

Priming of the substrate is the key to success with timber flooring. Without proper preparation, the possibility of seriously damaging your new timber floor is high, particularly with moisture rising out of the concrete slab or leveller.

By using Primers that also act as moisture regulator, you can be sure that your timber floor is protected and will remain stable for years.



DID YOU KNOW:

By choosing a SikaBond timber floor adhesive, you are contributing to a greener future for the world. Thanks to our fantastic low-emissions product formulas, by producing these timber floor adhesives we don't contribute to global warming, and products within this range are Green Star Compliant.

TO WOOD FLOOR BONDING

THE SECRET TO A GOOD TIMBER FLOOR IS IN PREPARATION. SELECTING THE RIGHT SYSTEM AND CREATING A SOUND SUBSTRATE ARE THE KEYS TO SUCCESS.

ACOUSTIC MATS

Acoustic mats create fantastic benefits for your timber floor, with excellent sound deadening and insulating properties.

Sika provides customers with two options for acoustic mats, one rubber based and one foam based. This allows users to pick and choose which properties are of greater importance to the customer, and choose the appropriate system for the application.



ADHESIVES

Our adhesives are the absolute corner stone of our Timber Flooring system. All of our adhesives are based on Polyurethane technology, which means they are strong, elastic and have a high bead stability.

We provide both low solvent and solvent free options in our range, with each having appropriate applications.



DID YOU KNOW:

Sika use a patented i-Cure technology in many of their adhesives. i-Cure technology features lower VOC, bubble free curing, resulting in stronger, more consistent bond.

Check for the i-Cure symbol to get the best result!

THE COMPLETE SYSTEM & SOLUTION



SikaBond® -SMP 151

Solvent Free Elastic Wood Floor Adhesive

- Elastic adhesive according to ISO 17178
- Easy to spread
- Maintains stable trowel peaks
- Walkable after 8 hours
- Sandable after 12 hours



SikaBond® -58 Wood Floor

Solvent Free, Elastic Timber Floor Adhesive

- Fast curing and excellent sound dampening
- Excellent workability and bead stability
- Ideal for interior applications, Green Star Compliant
- Very low VOC and Rated EC1Plus - Ultra Low emissions
- High strength bond for all timbers

USE ONLY IN NECESSARY CONDITIONS

Sikafloor® Level PRO Primer

Acrylic based liquid surface primer

- Reduces porosity of substrates to maximise adhesive bond
- Interior and exterior applications
- Available in 1L and 5 L

Sikafloor® Level Top

Cement based self-levelling & smoothing compound

- Very Low VOC (3 grams per litre)
- Non-combustible
- Green Star Certified

Sikafloor® Level PRO FS

High performance, self levelling underlay

- Layer thickness up to 25 mm
- Initial set 90min, final set 3.5 hrs
- Flooring application in 2-4 hrs
- Interior and exterior applications

Sika® Primer MR Fast

3-in-1 primer, moisture regulator & surface consolidator

- Maximises adhesive bond
- Reduces adhesive consumption
- 1 coat application, 4 hour dry time
- Suitable for use with subfloor heating systems
- Moisture regulator



FOR WOOD FLOOR BONDING



SikaBond®-T55 (I)

High Strength, polyurethane timber floor adhesive

- High strength with excellent elasticity
- Excellent sound deadening properties
- Quick tack free time and low odour
- Excellent stability for maximum adhesion



SikaBond®-T53

Ultra strong timber floor adhesive

- Designed for use with Sika Acoubond
- Premium sound dampening properties
- Excellent bead stability for maximum adhesive performance

Sika® Primer MB

3 in one - primer, moisture regulator & surface consolidator

- Excellent penetration on cement
- Suitable for use on damp substrates over 5.5% moisture
- Short waiting time between application and bonding

Sika® Acoustic Mat

Rubber-based underlay for use with timber flooring systems

- Reduces Airborne and Footfall noise
- Can be walked on during installation
- Available in 3 mm thick mat, 15 m long
- Available in 5 mm thick mat, 10 m long
- Both rolls are 1.2 m wide

Sika® Acoubond

Foam-based underlay for use with timber flooring systems

- Noise Transmission reduced by 18dB
- Meets & exceeds the BCA requirements for noise transmission
- Can be walked on during installation
- For use with SikaBond T53
- Available in 20 m² Roll



A VARIETY OF SYSTEMS TO APPLY



The Acoubond System

This system is built up in a number of layers:

1. Sikafloor® Level PRO Primer is applied to substrate
2. Sikafloor® Level Top or Sikafloor Level PRO FS is poured
3. Sika® Primer MR Fast is applied over cured leveller
4. Sika® Acoubond Mat is applied over Sika Primer MR Fast
5. SikaBond®-T53 is caulked into cut out sections
6. Timber floor is laid directly over the mat

This system is ideally suited to multilevel residential applications where the transmission of sound needs to be minimised.

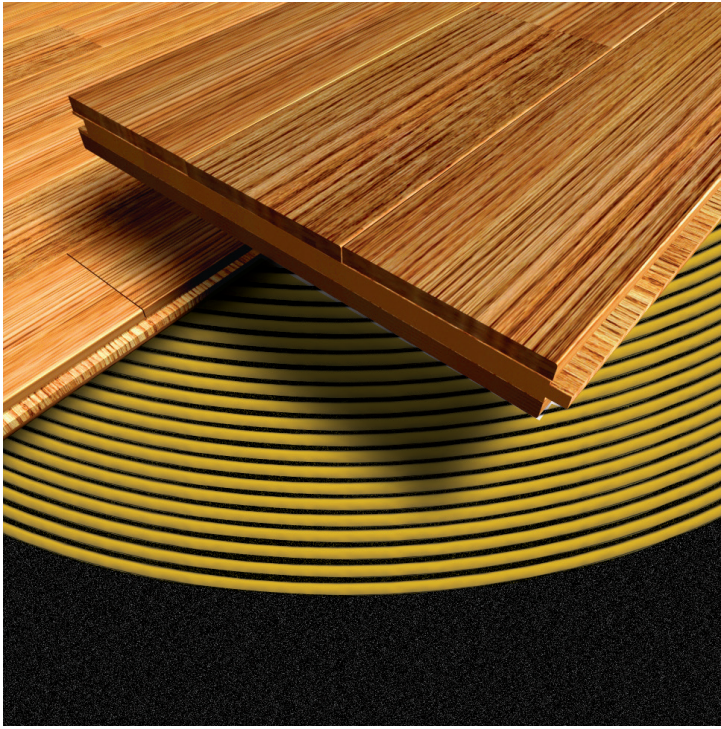
The Direct Application System

This system is built up in a number of layers:

1. Sikafloor® Level PRO Primer is applied to substrate
2. Sikafloor® Level Top or Sikafloor® Level PRO FS is poured
3. Sika® Primer MR Fast is applied over cured leveller
4. SikaBond®-58 Wood Floor is applied by trowel to substrate
5. Timber floor is laid directly into the adhesive

This system is ideally suited to new timber flooring applications where the original substrate might be damaged.

DIFFERENT TIMBER FLOOR OPTIONS

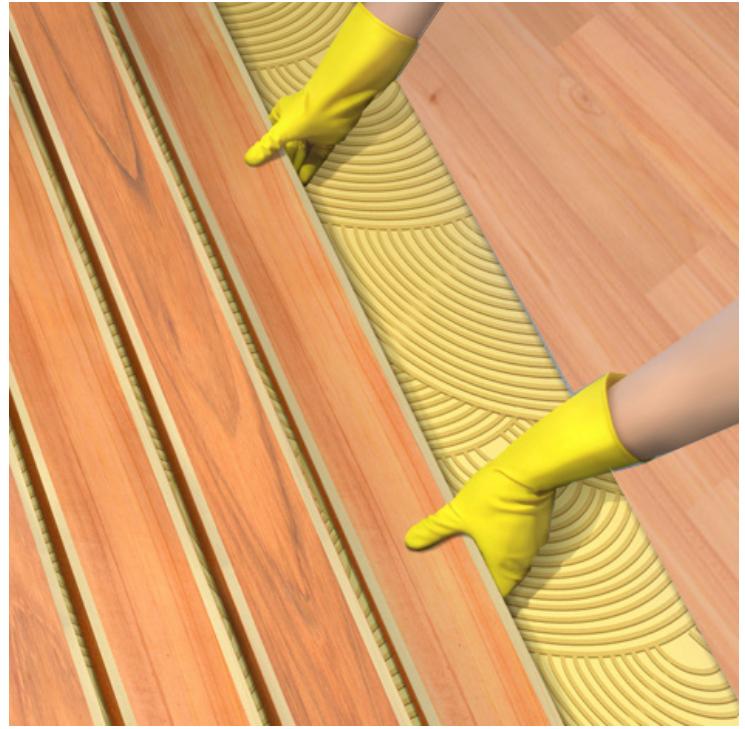


The Acoustic Mat System

This system is built up in a number of layers:

1. Sika® Primer MB is applied to the substrate
2. A layer of adhesive is applied to the substrate
3. Sika® Acoustic Mat is then applied directly into the adhesive
4. Another layer of adhesive is applied
5. Timber flooring pieces are then applied into the adhesive

This system is ideally suited to applications where sound deadening is of high importance to the owner.

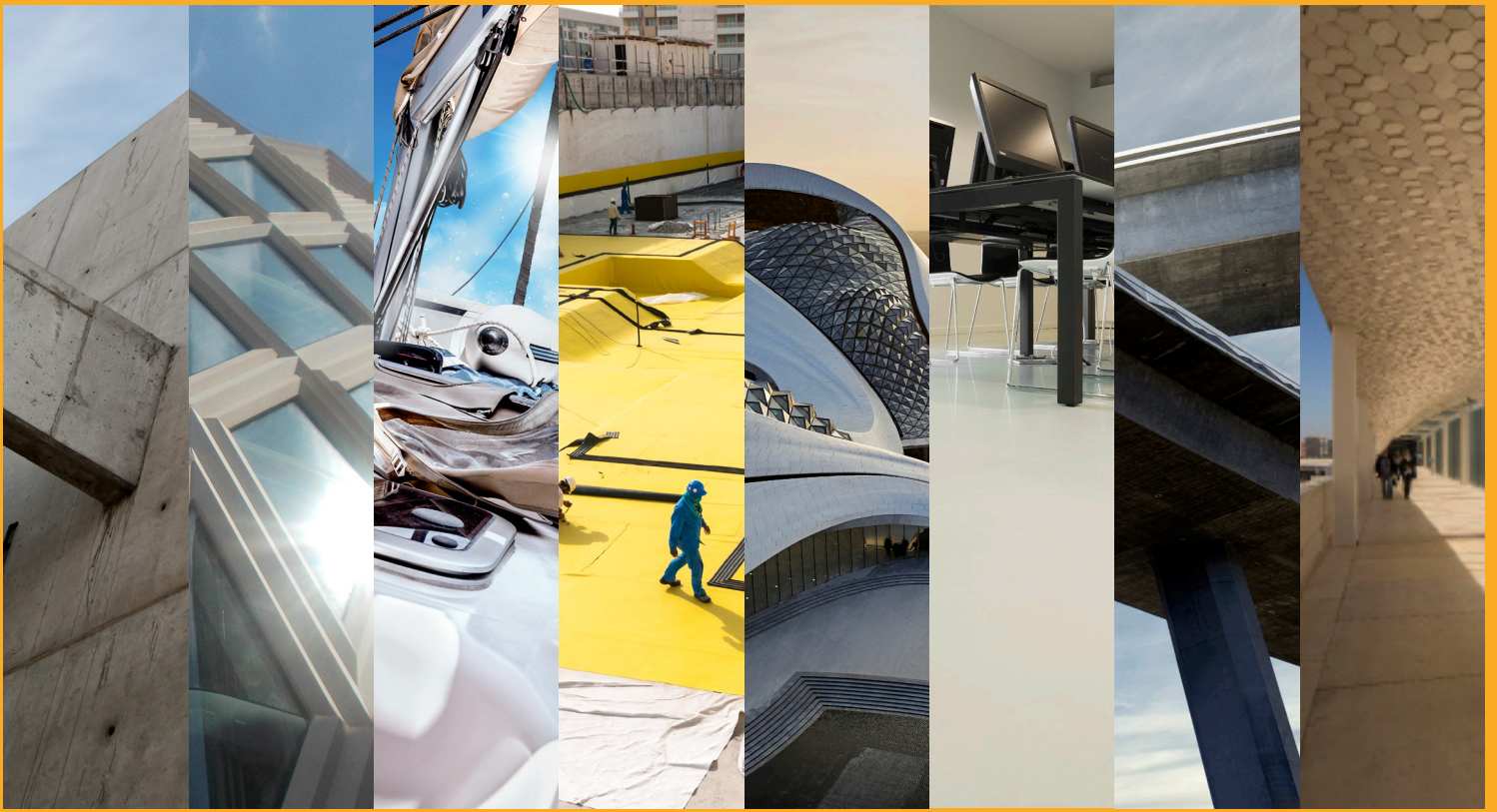


Direct Application to Timber Subfloor

This system is built up in a number of layers:

1. No primer is necessary - but substrate must be clean
2. Apply a layer of SikaBond®-T55 / SikaBond® 58 Wood Floor & SikaBond® SMP 151 to timber substrate by hand trowel only.
3. Timber flooring pieces are then applied into the adhesive

This system is ideally suited timber floor applications over structural timber subfloors



WE ARE SIKA

Sika is a specialty chemicals company with a leading position in the development and production of systems and products for bonding, sealing, damping, reinforcing and protecting in the building sector and the motor vehicle industry. Sika's product lines feature concrete admixtures, mortars, sealants and adhesives, structural strengthening systems, flooring as well as roofing and waterproofing systems.

CONCRETE
 SEALING & BONDING
 INDUSTRY
 WATER PROOFING
 ROOFING
 FLOORING
 REFURBISHMENT
 BUILDING FINISHING

SIKA AUSTRALIA PTY LTD
 ABN 12 001 342 329

1300 22 33 48
aus.sika.com

BUILDING TRUST

