



TIMELESS BEAUTY



“Innovation is the foundation of our approach and it will continue to be the foundation of our future.”

André Horbach, CEO, Trespa International B.V.

ENDLESS COLOURS

PROVIDES HUES AND COMBINATIONS FOR ANY PROJECT, EITHER FROM OUR EXISTING CATALOGUE OR BESPOKE SOLUTIONS.

NATURAL TOUCH

COMBINES A NATURAL APPEARANCE WITH ENDURING PHYSICAL PROPERTIES. FROM FRESH TO WEATHERED, FROM WOOD TO STONE APPEARANCES.

ABSTRACT VARIATIONS

OFFERS ENTIRELY NEW LOOKS FOR FAÇADES. THIS EMPHASISES TRESPA'S COMMITMENT TO DEVELOPING NEW HIGH-END AESTHETICS FOR FAÇADES.

TRESPA® METEON® HIGH-END AESTHETICS, LASTING QUALITY

SINCE 1960, TRESPA HAS BEEN SUPPORTING ARCHITECTS ALL OVER THE WORLD WITH HIGH QUALITY PRODUCTS FOR EXTERIOR DESIGN. TRESPA® METEON® IS A DEDICATED RANGE OF DURABLE PRODUCTS FOR EXTERIOR ARCHITECTURE.

Trespa® Meteon® is engineered for exterior coverings such as façade cladding, balcony panelling, sunblinds, soffits and other demanding applications. Thanks to the wide variety of options on offer, there's a perfect match for almost every architectural vision. A broad selection of innovative finishes and striking effects, bespoke and standard colours, allow you to play with abstract variations, colours and natural appearances.

ENDLESS COLOURS

COLOUR ON FAÇADES CAN TELL A STORY, PLAY WITH CONTOURS AND VOLUMES, BREAK UP SURFACES AND CREATE CAPTIVATING RHYTHMS. YOU CAN EMPLOY A FAÇADE COVERING TO ASSIGN DIFFERENT IDENTITIES TO PARTS OF A BUILDING, TO DESIGNATE SPECIFIC FUNCTIONALITIES - OR SIMPLY MAKE THINGS MORE ATTRACTIVE.

TRESPA OFFERS A BROAD SELECTION OF BRIGHT, LONG-LASTING COLOURS FOR FAÇADES. IF DESIRED, WE CAN PROVIDE TRESPA® METEON® IN COLOURS CREATED ESPECIALLY FOR YOUR PROJECT.



“Through its colours,
Trespa offers the
words to tell a story
with the façade.”



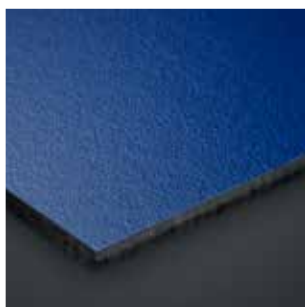


UNI COLOURS

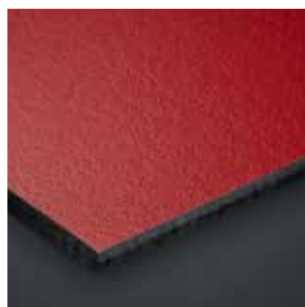
						
A28.2.1 Aquamarine	A22.3.1 Ocean Grey	A24.0.3 Polar Blue	A23.0.4 Mineral Blue	A22.2.4 Powder Blue	A22.2.1 Bluish Grey	A21.1.0 Winter Grey
						
A32.2.1 Translucent Green	A24.4.1 Steel Blue	A22.1.6 Royal Blue	A22.4.4 Brilliant Blue	A21.5.4 Cobalt Blue	A22.6.2 Dark Denim	A20.2.3 Light Viola
						
A30.3.2 Verdigris	A35.4.0 Cactus Green	A28.6.2 Mid Green	A26.5.4 Pacific	A20.7.2 Dark Blue	A21.7.0 Steel Grey	A20.5.2 Lavender Blue
						
A37.2.3 Spring Green	A33.3.6 Brilliant Green	A32.7.2 Dark Green	A34.8.1 Forest Green	A90.0.0 Black	A25.8.1 Anthracite Grey	A05.5.0 Quartz Grey
						
A03.1.0 Pastel Grey	A37.0.8 Lime Green	A36.3.5 Turf Green	A08.8.1 Dark Brown	A14.7.2 Deep Red Brown	A11.8.0 Ceramic Greige	A06.7.1 Natural Greige

PROJECT COLOURS

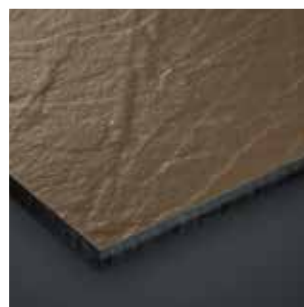
For the Meteon® Uni Colours Trespa is happy to create panels in bespoke colours for your project. Almost anything is possible, just tell us what you need. For more information please contact your local Trespa representative.



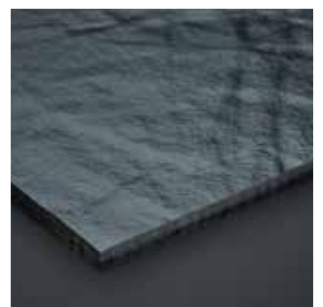
A21.5.4 Cobalt Blue
SATIN



A12.3.7 Carmine Red
SATIN



A06.5.1 Toscana Greige
ROCK



A25.8.1 Anthracite Grey
ROCK

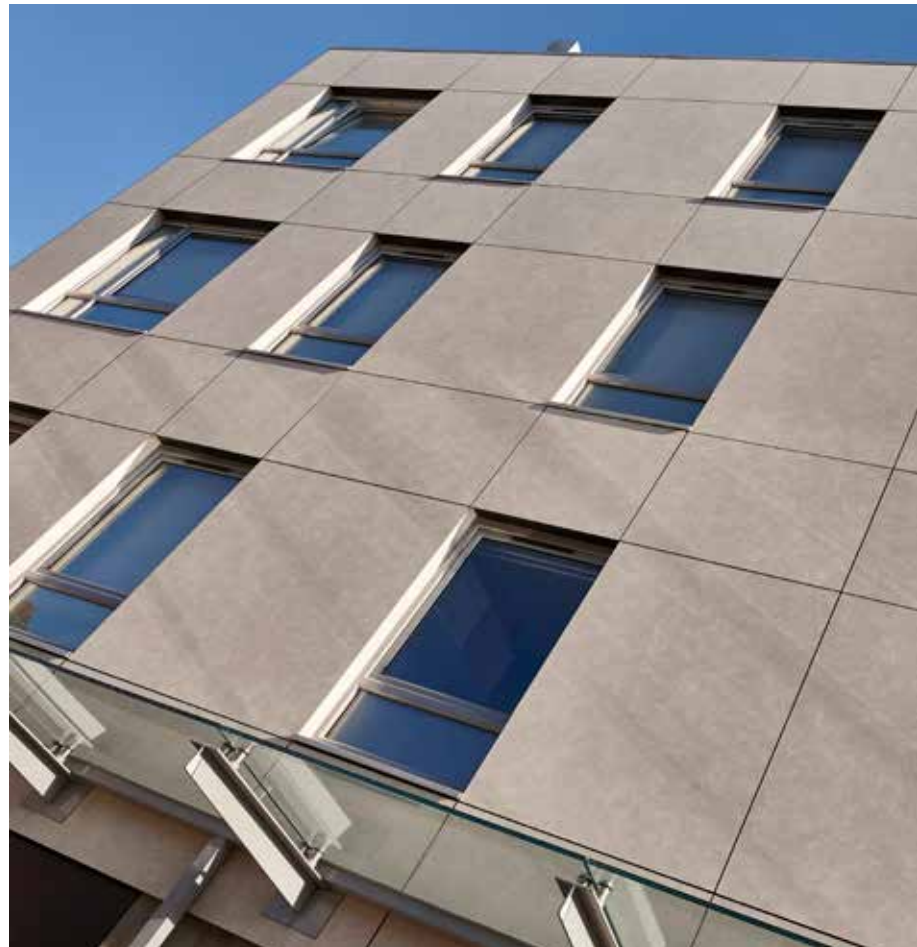
NATURAL TOUCH

TRESPA® METEON® ALLOWS YOU TO COMBINE A NATURAL APPEARANCE WITH PHYSICAL DURABILITY. GIVE ANY BUILDING INSTANT CHARACTER WITH DECORS INSPIRED BY NATURAL MATERIALS AND PROCESSES. YOU CAN UNLEASH YOUR CREATIVITY IN NEW WAYS AND CREATE TOMORROW'S NATURE-INSPIRED DESIGNS.

OUR METEON® WOOD DECORS BRING WARMTH, ENABLING FRESH CONTEMPORARY DESIGNS AS WELL AS CLASSIC WEATHERED LOOKS. INTRODUCE LIVELY WEATHERED LOOKING SURFACES AND PATINA DESIGNS WHEREVER YOU LIKE WITH OUR METEON® NATURALS. DIMENSIONLESS DESIGNS MAKE IT POSSIBLE TO BRING DETAILS AND COMPLETE FAÇADES TO LIFE.







“A natural façade appearance with the quality of Trespa.”

WOOD DECORS



NW20
Bleached Pine



NW26
Core Ash



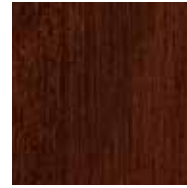
NW02
Elegant Oak



NW18
Light Mahogany



NW04
Pacific Board



NW19
Dark Mahogany



NW09
Wenge



NW21
Australian Pine



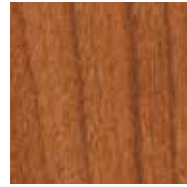
NW27
Denver Oak



NW15
Milano Sabbia



NW16
Milano Terra



NW10
English Cherry



NW08
Italian Walnut



NW11
Santos Palisander



NW12
Natural Bagenda



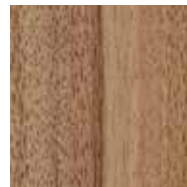
NW06
Montreux Amber



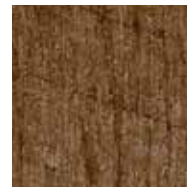
NW07
Montreux Sunglow



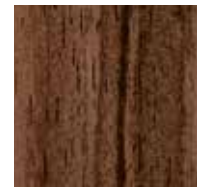
NW03
Harmony Oak



NW14
French Walnut



NW05
Loft Brown



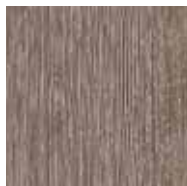
NW13
Country Wood



NW29
Woodstone



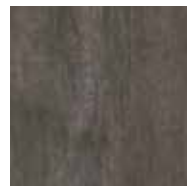
NW28
Halmstad



NW24
Greyed Cedar



NW17
Milano Grigio



NW25
Hesbania



NW22
Slate Wood



NW23
Nordic Black



NW19 Dark Mahogany
SATIN



NW22 Slate Wood
MATT

NATURALS



NA11
French Limestone



NA12
Natural Chalkstone



NA13
Silver Quartzite



NA14
Weathered Basalt



NA15
Indian Terra Cotta



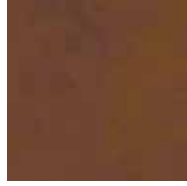
NEW NA16
Belgian Bluestone



NEW NA17
Natural Graphite



NM04 *
Sintered Alloy



NM05 *
Hardened Brown



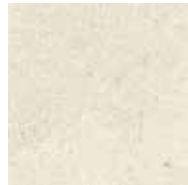
NM01
Rusted Brown



NM06 *
Tempered Grey



NM07 *
Casted Grey



NEW NM08 *
Crafted White



NM02 *
Forged Alloy



NM03
Corroded Green

* DECORS HAVE GLOSS ELEMENTS IN THE SURFACE



NA14 Weathered Basalt
MATT-ROCK



NM01 Rusted Brown
MATT



NM07 Casted Grey
MATT

ABSTRACT VARIATIONS

AS A MARKET LEADER IN FAÇADE CLADDING, TRESPA IS CONTINUOUSLY DEVELOPING. INNOVATIONS IN MATERIALS ALLOW US TO OFFER YOU NEW LOOKS FOR THE FAÇADES OF TODAY AND TOMORROW. ARCHITECTS CAN DESIGN WITH NEW ABSTRACT EFFECTS AND DIFFERENT SURFACE FINISHES.

METEON® METALLICS EMPHASISE TRESPA®'S PREMIUM APPEARANCE, AND CAN INTRODUCE SUBTLE DIFFERENCES BETWEEN PANELS WHEN INSTALLED AT DIFFERENT ANGLES. METEON® LUMEN OFFERS ARCHITECTS THE OPPORTUNITY TO BRING DESIGNS TO LIFE WITH REFLECTIONS OF LIGHT. EACH INNOVATIVE METEON® FOCUS DESIGN BRINGS ITS OWN STORY OF INSPIRATION, AND CAN BE USED TO CREATE NEW FAÇADES WITH A HIGH-END AESTHETIC.



“Nuances make
the difference.”





METALLICS



M51.0.1
Aluminium Grey



M04.4.1
Titanium Silver



M05.5.1
Titanium Bronze



M06.4.1
Amber



M40.4.3
Mustard Yellow



M51.0.2
Urban Grey



M21.3.4
Azurite Blue



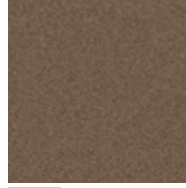
M53.0.2
Copper Yellow



M53.0.1
Copper Red



NEW M10.5.5
Deep Copper



NEW M05.6.1
Urban Brown



M35.7.1
Malachite Green



M21.8.1
Graphite Grey

FOCUS



NEW C08.03
Brooklyn Classic



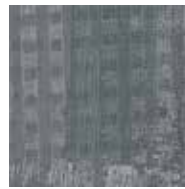
NEW C08.21
Brooklyn Luna



NEW C08.25
Brooklyn Anthracite



NEW CM09.51
Brooklyn Aluminium



NEW CM09.03
Brooklyn Steel



NEW CM09.06
Brooklyn Bronze



NEW CM05.04
Santiago Blanco

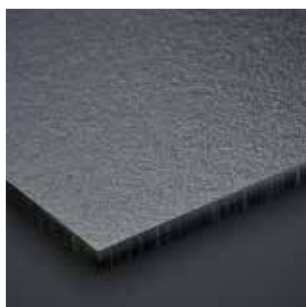


NEW CM05.21
Santiago Gris

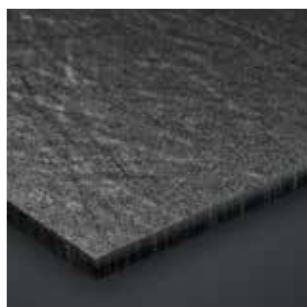


NEW CM05.25
Santiago Noche

TO EXPERIENCE THE METALLIC EFFECT AND THE EFFECT OF THE FOCUS FINISHES WE ADVISE YOU TO ORDER A SAMPLE.



M21.8.1 Graphite Grey
SATIN



M21.8.1 Graphite Grey
ROCK

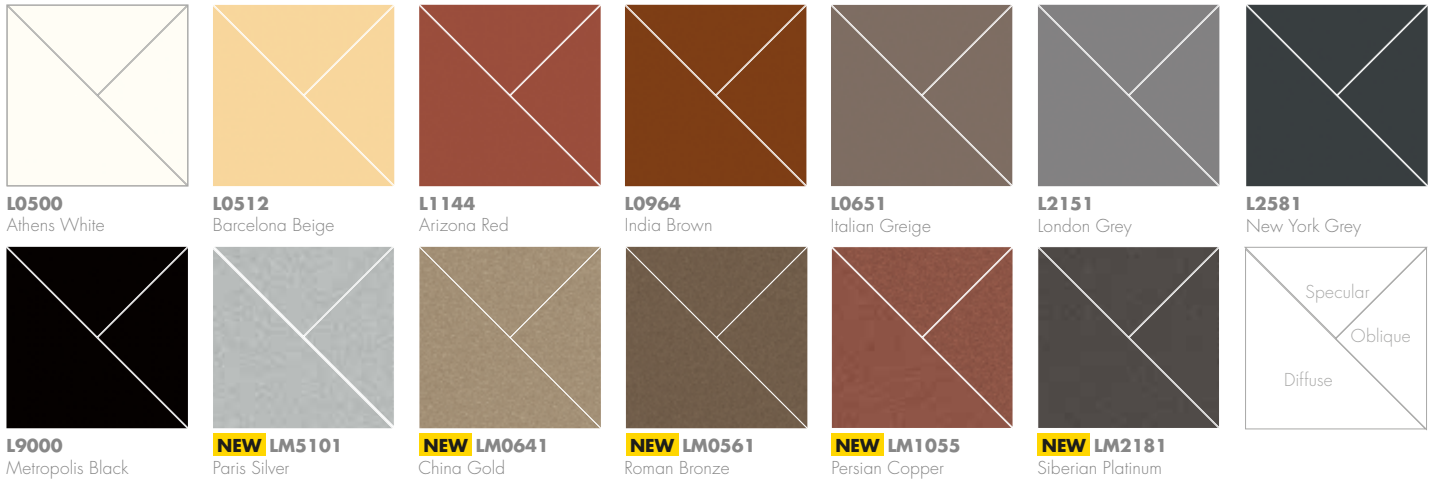


CM09.03 Brooklyn Steel
SPECULAR



C08.03 Brooklyn Classic
DIFFUSE

LUMEN



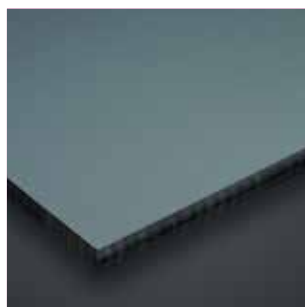
TO EXPERIENCE THE EFFECT OF THE LUMEN FINISHES, WE ADVISE TO ORDER SAMPLES.

PROJECT COLOURS

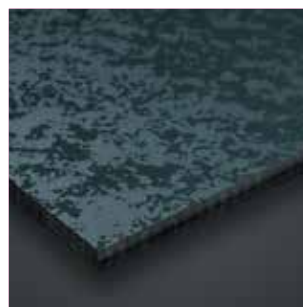
For the Meteon® Metallics and Lumen, Trespa is happy to create panels in bespoke colours for your project. Almost anything is possible, just tell us what you need. For more information please contact your local Trespa representative.



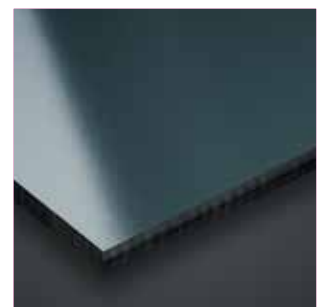
LM0641 China Gold
DIFFUSE, SPECULAR, OBLIQUE



L2581 New York Grey
DIFFUSE



L2581 New York Grey
OBLIQUE



L2581 New York Grey
SPECULAR



DURABLE, DISTINCT FAÇADES

ATTRACTIVE AND LONG-LASTING FAÇADES ARE ESSENTIAL TO CLIENTS, TENANTS AND BUYERS. WITH TRESPA® METEON® YOUR BUILDING IS GUARANTEED TO STAND OUT TODAY AS WELL AS TOMORROW.

Trespa® Meteon® can be used in countless applications and has proven its worth in real-life projects for over half a century. Whatever your architectural goals and vision, there will be a right solution.



TRESPA® METEON®:

- WEATHER RESISTANT & COLOUR STABLE
- LOW MAINTENANCE & EASY TO CLEAN
- SOLID & STURDY

**20
YEARS**

CENTRE DE CALCUL, SPAIN.
BUILT IN 1991, REVISITED IN 2011.

HIGH QUALITY, LOW MAINTENANCE

Trespa® Meteon performs exceptionally well outdoors and it stays looking great for many years. Sun and rain have no significant effect on the panel's surface. Since nobody is keen on maintenance and the related costs and time investment, Trespa® panels have been developed to minimise this. The neatly closed, pore-free, uniform surface practically withstands dirt accumulation, keeping the product smooth and easy to clean. Graffiti can be treated with the right cleaning agents. A practical approach to saving on maintenance.



BEFORE



AFTER

RECLADDING CHARLEMONT FARM ESTATE, UK.

INNOVATION IS IN OUR DNA

Trespa has close ties to the global design community, with its own design centres in New York, Barcelona and Santiago de Chile. Our technology centres are constantly innovating and developing new products to open new possibilities for customers.

This approach has allowed us to come up with aesthetic innovations such as the Meteon® Lumen range, which allows architects to play with light reflection, or functional innovations like Solar Reflectance Technology (SRT), which allows the use of darker façade colours in hot climates.

SERVICE & RELIABILITY

Making your façades attractive and durable is as important to us as it is to you. We strive to support all parties in a building project, helping ensure each application is a lasting success. We can help find the best solutions for specific designs and detailing, we offer on-time panel delivery and provide training.

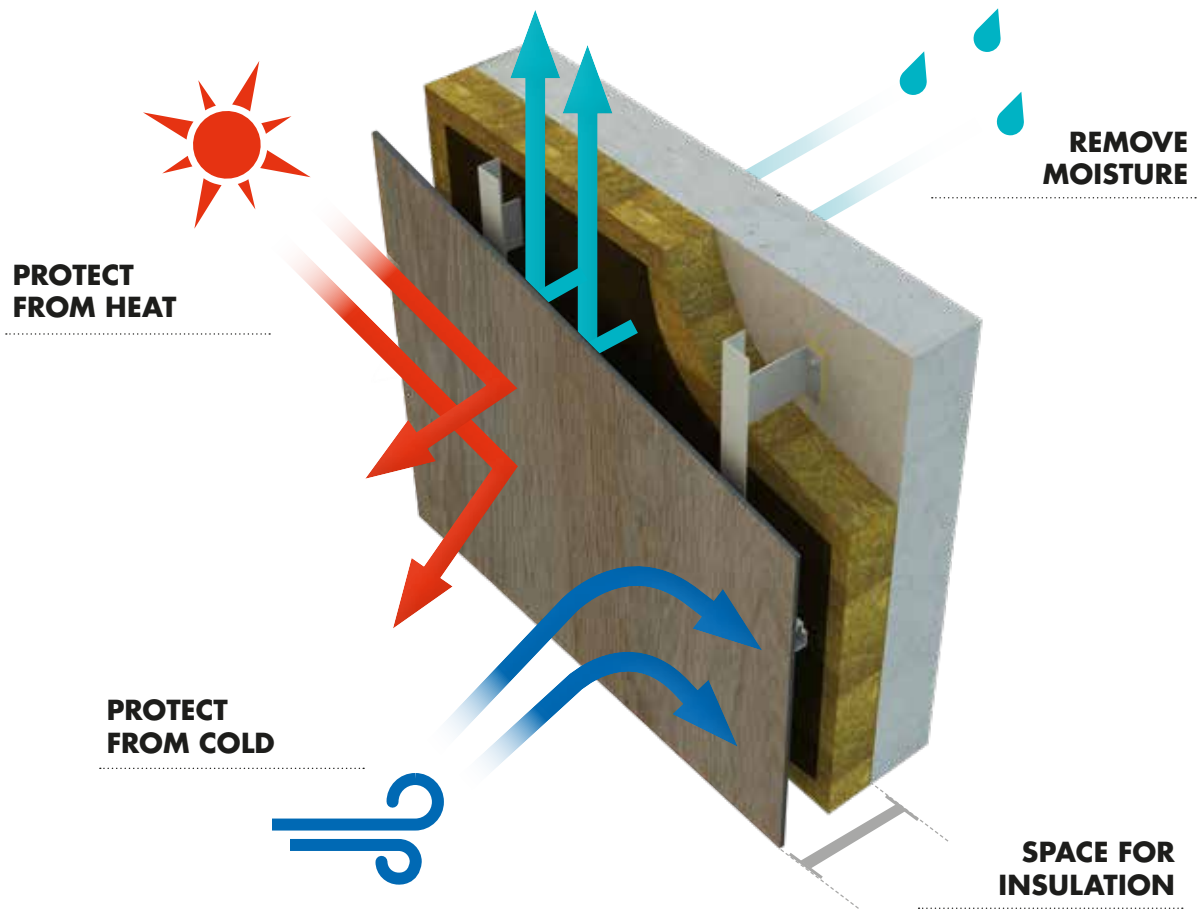
All technical information regarding Trespa® Meteon® is clearly presented on www.trespa.info.

SUSTAINABLE SOLUTIONS

Trespa® Meteon® contains up to 70% natural fibres and is available with PEFC™ or FSC™ certification. Its sustainable character is expressed through long-lasting performance. Trespa® Meteon® is often used in energy renovation projects, providing fresh new looks to buildings with improved energy performance.

VENTILATED FAÇADES

TRESPA® METEON® PANELS ARE USED IN INNOVATIVE AND FUNCTIONAL VENTILATED FAÇADE SYSTEMS. VENTILATED FAÇADES ARE MORE THAN A DESIGN GESTURE - THEY CAN PROVIDE ENERGY EFFICIENT, LONG-LASTING PROPERTIES AND IMPROVED COMFORT OF THE INDOOR ENVIRONMENT.



UNI COLOURS

Colour code	Colour name	Satin				Rock*			
		■	■	■	■	■	■	■	■
A03.0.0	White	■	■	■	■	■	■	■	■
A03.1.0	Pastel Grey	■	■	■	■	■	■	■	■
A03.4.0	Silver Grey	■	■	■	■	■	■	■	■
A04.0.0	Cream White	■	■	■	■	■	■	■	■
A04.0.1	Pearl Yellow	■	■	■	■	■	■	■	■
A04.0.2	Pale Yellow	■	■	■	■	■	■	■	■
A04.0.5	Zinc Yellow	■	■	■	■	■	■	■	■
A04.1.7	Gold Yellow	■	■	■	■	■	■	■	■
A05.0.0	Pure White	■	■	■	■	■	■	■	■
A05.1.0	Papyrus White	■	■	■	■	■	■	■	■
A05.1.1	Stone Beige	■	■	■	■	■	■	■	■
A05.1.2	Champagne	■	■	■	■	■	■	■	■
A05.1.4	Sun Yellow	■	■	■	■	■	■	■	■
A05.5.0	Quartz Grey	■	■	■	■	■	■	■	■
A06.3.5	Ochre	■	■	■	■	■	■	■	■
A06.5.1	Toscana Greige	■	■	■	■	■	■	■	■
A06.7.1	Natural Greige	■	■	■	■	■	■	■	■
A07.1.1	Sand	■	■	■	■	■	■	■	■
A08.2.1	Mid Beige	■	■	■	■	■	■	■	■
A08.2.3	Salmon	■	■	■	■	■	■	■	■
A08.3.1	Stone Grey	■	■	■	■	■	■	■	■
A08.4.5	Rusty Red	■	■	■	■	■	■	■	■
A08.8.1	Dark Brown	■	■	■	■	■	■	■	■
A09.6.4	Mahogany Red	■	■	■	■	■	■	■	■
A10.1.8	Red Orange	■	■	■	■	■	■	■	■
A10.3.4	Terra Cotta	■	■	■	■	■	■	■	■
A10.4.5	Sienna Brown	■	■	■	■	■	■	■	■
A10.6.1	Taupe	■	■	■	■	■	■	■	■
A11.4.4	English Red	■	■	■	■	■	■	■	■
A11.8.0	Ceramic Greige	■	■	■	■	■	■	■	■
A12.1.8	Passion Red	■	■	■	■	■	■	■	■
A12.3.7	Carmine Red	■	■	■	■	■	■	■	■
A12.6.3	Wine Red	■	■	■	■	■	■	■	■
A14.7.2	Deep Red Brown	■	■	■	■	■	■	■	■
A16.5.1	Mauve	■	■	■	■	■	■	■	■
A17.3.5	Cyclam	■	■	■	■	■	■	■	■
A20.2.3	Light Viola	■	■	■	■	■	■	■	■
A20.5.2	Lavender Blue	■	■	■	■	■	■	■	■
A20.7.2	Dark Blue	■	■	■	■	■	■	■	■
A21.1.0	Winter Grey	■	■	■	■	■	■	■	■
A21.5.1	Mid Grey	■	■	■	■	■	■	■	■
A21.5.4	Cobalt Blue	■	■	■	■	■	■	■	■
A21.7.0	Steel Grey	■	■	■	■	■	■	■	■
A22.1.6	Royal Blue	■	■	■	■	■	■	■	■
A22.2.1	Bluish Grey	■	■	■	■	■	■	■	■
A22.2.4	Powder Blue	■	■	■	■	■	■	■	■
A22.3.1	Ocean Grey	■	■	■	■	■	■	■	■
A22.4.4	Brilliant Blue	■	■	■	■	■	■	■	■
A22.6.2	Dark Denim	■	■	■	■	■	■	■	■
A23.0.4	Mineral Blue	■	■	■	■	■	■	■	■
A24.0.3	Polar Blue	■	■	■	■	■	■	■	■
A24.4.1	Steel Blue	■	■	■	■	■	■	■	■
A25.8.1	Anthracite Grey	■	■	■	■	■	■	■	■
A26.5.4	Pacific	■	■	■	■	■	■	■	■
A28.2.1	Aquamarine	■	■	■	■	■	■	■	■
A28.6.2	Mid Green	■	■	■	■	■	■	■	■
A30.3.2	Verdigris	■	■	■	■	■	■	■	■
A32.2.1	Translucent Green	■	■	■	■	■	■	■	■
A32.7.2	Dark Green	■	■	■	■	■	■	■	■
A33.3.6	Brilliant Green	■	■	■	■	■	■	■	■
A34.8.1	Forest Green	■	■	■	■	■	■	■	■
A35.4.0	Cactus Green	■	■	■	■	■	■	■	■
A36.3.5	Turf Green	■	■	■	■	■	■	■	■
A37.0.8	Lime Green	■	■	■	■	■	■	■	■
A37.2.3	Spring Green	■	■	■	■	■	■	■	■
A41.0.6	Mojito Green	■	■	■	■	■	■	■	■
A90.0.0	Black	■	■	■	■	■	■	■	■

* WITH SATIN REVERSE.

WOOD DECORS

Colour code	Colour name	Satin				Matt			
		■	■	■	■	■	■	■	■
NW02	Elegant Oak	■	■	■	■	■	■	■	■
NW03	Harmony Oak	■	■	■	■				
NW04	Pacific Board	■	■	■	■	■	■	■	■
NW05	Loft Brown	■	■	■	■	■	■	■	■
NW06	Montreux Amber	■	■	■	■				
NW07	Montreux Sunglow	■	■	■	■				
NW08	Italian Walnut	■	■	■	■	■	■	■	■
NW09	Wenge	■	■	■	■	■	■	■	■
NW10	English Cherry	■	■	■	■				
NW11	Santos Palisander	■	■	■	■				
NW12	Natural Bagenda	■	■	■	■				
NW13	Country Wood	■	■	■	■				
NW14	French Walnut	■	■	■	■	■	■	■	■
NW15	Milano Sabbia	■	■	■	■				
NW16	Milano Terra	■	■	■	■	■	■	■	■
NW17	Milano Grigio	■	■	■	■	■	■	■	■
NW18	Light Mahogany	■	■	■	■				
NW19	Dark Mahogany	■	■	■	■				
NW20	Bleached Pine	■	■	■	■	■	■	■	■
NW21	Australian Pine	■	■	■	■	■	■	■	■
NW22	Slate Wood	■	■	■	■	■	■	■	■
NW23	Nordic Black	■	■	■	■	■	■	■	■
NW24	Greyed Cedar					■	■	■	■
NW25	Hesbania					■	■	■	■
NW26	Core Ash					■	■	■	■
NW27	Denver Oak					■	■	■	■
NW28	Halmstad					■	■	■	■
NW29	Woodstone					■	■	■	■

TRESPA® METEON® WOOD DECORS PANELS FEATURE A DIRECTIONAL COLOURED SURFACE. THE GRAIN OF TRESPA® METEON® WOOD DECORS RUNS THE LENGTH DIRECTION OF THE PANEL.

NATURALS

Colour code	Colour name	Matt				Matt-Rock*	
		■	■	■	■	■	■
NA11	French Limestone	■	■	■	■	■	■
NA12	Natural Chalkstone	■	■	■	■	■	■
NA13	Silver Quartzite	■	■	■	■	■	■
NA14	Weathered Basalt	■	■	■	■	■	■
NA15	Indian Terra Cotta	■	■	■	■	■	■
NA16	Belgian Bluestone	■	■	■	■	■	■
NA17	Natural Graphite	■	■	■	■	■	■
NM01	Rusted Brown	■	■	■	■		
NM02**	Forged Alloy	■	■	■	■		
NM03	Corroded Green	■	■	■	■		
NM04**	Sintered Alloy	■	■	■	■		
NM05**	Hardened Brown	■	■	■	■		
NM06**	Tempered Grey	■	■	■	■		
NM07**	Casted Grey	■	■	■	■		
NM08**	Crafted White	■	■	■	■		

TRESPA® METEON® NATURALS PANELS FEATURE A DIRECTIONAL COLOURED SURFACE.

* WITH SATIN REVERSE.

** DECORS HAVE GLOSS ELEMENTS IN THE SURFACE.

METALLICS

Colour code	Colour name	Satin			Rock*		
		■	■	■	■	■	■
M04.4.1	Titanium Silver	■	■	■	■	■	■
M05.5.1	Titanium Bronze	■	■	■	■	■	■
M05.6.1	Urban Brown	■	■	■	■	■	■
M06.4.1	Amber	■	■	■	■	■	■
M10.5.5	Deep Copper	■	■	■	■	■	■
M21.3.4	Azurite Blue	■	■	■	■	■	■
M21.8.1	Graphite Grey	■	■	■	■	■	■
M35.7.1	Malachite Green	■	■	■	■	■	■
M40.4.3	Mustard Yellow	■	■	■	■	■	■
M51.0.1	Aluminium Grey	■	■	■	■	■	■
M51.0.2	Urban Grey	■	■	■	■	■	■
M53.0.1	Copper Red	■	■	■	■	■	■
M53.0.2	Copper Yellow	■	■	■	■	■	■

TRESPA® METEON® METALLICS PANELS FEATURE A DIRECTIONAL COLOURED SURFACE.

* WITH SATIN REVERSE.

FOCUS

Colour code	Colour name	Diffuse		Specular	
		■	■	■	■
C08.03	Brooklyn Classic	■	■		
C08.21	Brooklyn Luna	■	■		
C08.25	Brooklyn Antracite	■	■		
CM09.03	Brooklyn Steel	■	■	■	■
CM09.06	Brooklyn Bronze	■	■	■	■
CM09.51	Brooklyn Aluminium	■	■	■	■
CM05.04	Santiago Blanco	■	■	■	■
CM05.21	Santiago Gris	■	■	■	■
CM05.25	Santiago Noche	■	■	■	■

TRESPA® METEON® FOCUS PANELS FEATURE A DIRECTIONAL COLOURED SURFACE.

LUMEN

Colour code	Colour name	Diffuse			Oblique			Specular		
		■	■*	■	■	■*	■	■	■*	■
L0500	Athens White	■	■	■	■	■	■	■	■	■
L0512	Barcelona Beige	■	■	■	■	■	■	■	■	■
L0651	Italian Greige	■	■	■	■	■	■	■	■	■
L0964	India Brown	■	■	■	■	■	■	■	■	■
L11144	Arizona Red	■	■	■	■	■	■	■	■	■
L2151	London Grey	■	■	■	■	■	■	■	■	■
L2581	New York Grey	■	■	■	■	■	■	■	■	■
L9000	Metropolis Black	■	■	■	■	■	■	■	■	■
LM0561	Roman Bronze	■	■	■	■	■	■	■	■	■
LM0641	China Gold	■	■	■	■	■	■	■	■	■
LM1055	Persian Copper	■	■	■	■	■	■	■	■	■
LM2181	Siberian Platinum	■	■	■	■	■	■	■	■	■
LM5101	Paris Silver	■	■	■	■	■	■	■	■	■

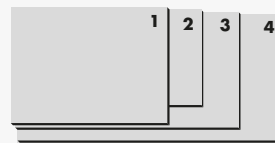
TRESPA® METEON® LUMEN DIFFUSE, LUMEN OBLIQUE AND ALL LUMEN WITH METALLIC EFFECT (PRODUCTS WITH LM CODE) FEATURE A DIRECTIONAL COLOURED SURFACE.

* WITH SATIN REVERSE.

TYPES

- **SINGLE SIDED DECORATIVE** DECORATIVE SIDE WITH NON DECORATIVE BLACK REVERSE
- ■ **DOUBLE SIDED DECORATIVE** SAME COLOUR FOR FRONT AND REVERSE SIDE OF THE PANEL
- ■ **VARITOP** DECORATIVE SIDE WITH STANDARD WHITE DECORATIVE SATIN REVERSE (A03.0.0)
- ■ **DUOCOLOUR** DIFFERENT COLOUR FOR FRONT AND REVERSE SIDE OF THE PANEL

SIZES



- 1 2550 x 1860 mm (≈ 100 x 73 inch)
- 2 3050 x 1530 mm (≈ 120 x 60 inch)
- 3 3650 x 1860 mm (≈ 143 x 73 inch)
- 4 4270 x 2130 mm (≈ 168 x 83 inch)*

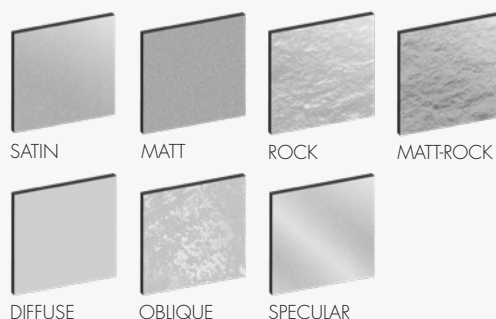
*THE LARGE SIZE OF THIS PANEL ALLOWS AN EFFICIENT MACHINING OF THE PRODUCT.

NOTE: FULL SIZE PANELS FEATURE A SQUARENESS TOLERANCE.

THICKNESSES



FINISHES



NOTE

PLEASE BE AWARE THAT NOT ALL PRODUCT-FINISH COMBINATIONS ARE POSSIBLE. FOR AVAILABLE SHEET SIZES, THICKNESSES AND FINISHES IN YOUR COUNTRY, PLEASE CHECK TRESPA.INFO FOR THE DETAILED AND UP TO DATE DELIVERY PROGRAMME AND MATERIAL PROPERTY DATASHEET. ALTERNATIVELY YOU CAN USE THE PRODUCT SELECTOR ON TRESPA.COM (AFTER CHOOSING THE COUNTRY WHERE THE PROJECT IS LOCATED).

ORDER SAMPLES AT TRESPA.COM

CREATING VALUE THROUGH INNOVATION, EXPERIENCE AND RELIABILITY

TRESPA INTERNATIONAL B.V. IS A LEADING INNOVATOR IN THE FIELD OF ARCHITECTURAL MATERIALS. THE COMPANY IS INTERNATIONALLY RECOGNISED AS A PREMIER DEVELOPER OF HIGH QUALITY, DURABLE PANELS FOR EXTERIOR CLADDING AND FAÇADES.

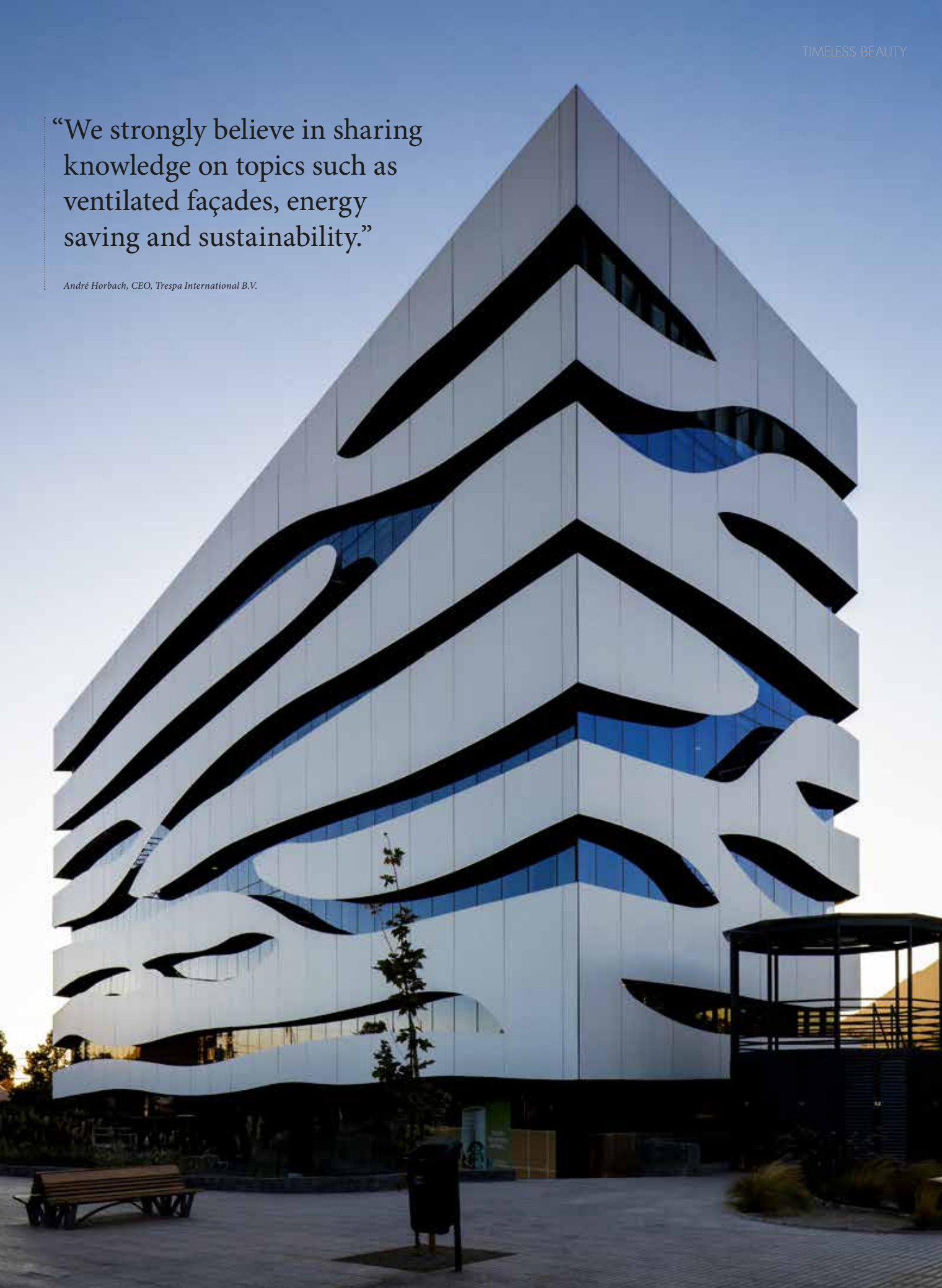
Since its founding in 1960, Trespa has been working closely with architects, designers, installers, distributors and end-users around the world. Trespa believes in product innovation, combining innovative manufacturing technologies with smart solutions for architectural applications. With a broad range of colours, finishes and tactile effects, Trespa brings compelling aesthetic and nearly limitless design possibilities to next-generation architectural claddings.



JOIN THE CONVERSATION
TRESPA.COM

“We strongly believe in sharing knowledge on topics such as ventilated façades, energy saving and sustainability.”

André Horbach, CEO, Trespa International B.V.



CONTACT US

TRESPA INTERNATIONAL B.V.

P.O. Box 110, 6000 AC Weert
Wetering 20, 6002 SM Weert
The Netherlands
www.trespa.com

CUSTOMER SERVICE DESK

EMEA EXPORT

Tel: +31 (0) 495 458 839
Info.Export@Trespa.com

TRESPA UK LTD.

35 Calthorpe Road
Edgbaston
Birmingham, B15 1TS
United Kingdom
Tel: 0808-2340268
Info.UK@Trespa.com

TRESPA NORTH AMERICA LTD.

350 Fifth Avenue, Ste 4610
New York, NY 10118
United States of America
Tel: +1 800 487 3772
Info.NorthAmerica@Trespa.com

TRESPA CHINA CO. LTD.

Room 2604-05, HuaiHai Plaza
No. 1045 HuaiHai Road (central)
ShangHai 200031
P.R. China
Tel: +86 (0) 21 6288 1299
Info.China@Trespa.com

CUSTOMER SERVICE DESK

ASIA/PACIFIC

Tel: +86 (0) 21 5465 8388
Info.APAC@Trespa.com

VISIT US

TRESPA DESIGN CENTRE WEERT

Wetering 20
6002 SM Weert
The Netherlands
Tel: +31 (0) 495 458 845
TDC.Weert@Trespa.com
www.trespa.com/tdc

TRESPA DESIGN CENTRE BARCELONA

Calle Ribera 5,
08003 Barcelona
Spain
Tel: +34 (0) 93 295 4193
TDC.Barcelona@Trespa.com
www.trespa.com/tdc

TRESPA DESIGN CENTRE SANTIAGO

Eliodoro Yáñez 2831
Torre A - Local 1
Providencia, Santiago
Chile
Tel: +56 2 4069990
TDC.Santiago@Trespa.com
www.trespa.com/tdc

FOLLOW US



DISCLAIMER

GENERAL

These terms apply to the use of this document and such use automatically means that the other party agrees to these terms. The information provided by Trespa International B.V. ("Trespa") in this document is solely indicative. Trespa is unable to warrant the accuracy and completeness of this information. Trespa may change the information included in this document at any time and without further notice. Trespa's customers and third parties must ascertain that they have the most recent document (for the most recent version, please consult: www.trespa.com). No rights can be derived from the information provided; the use of the information is at the other party's risk and responsibility. Trespa does not warrant that the information in this document is suitable for the purpose for which it is consulted by the other party. This document does not contain any design, structural calculation, estimate or other warranty or representation that customers and third parties may rely on. This document does not guarantee any properties of Trespa products. Colours used in Trespa's communications (including but not limited to printed matter) and in samples of Trespa's products may differ from the colours of the Trespa products to be supplied. Samples are not intended for use in product tests and are not representative of characteristics of the Trespa

products. Trespa's products and samples are produced within the specified colour tolerances and the colours (of production batches) may differ, even if the same colour is used. The viewing angle also influences the colour perception. Metallics panels feature a surface whose colour appears to change based on the direction from which it is viewed. The specified colour stability and colour specifications relate only to the decorative surface of the Trespa products, not to the core material and samples of the Trespa products. Trespa products are delivered ex-works with straight, sawn sides. Customers and third parties must have a professional adviser inform them about (the suitability of) the Trespa products for all desired applications and about applicable laws and regulations. Trespa does not warrant the above. The most recent version of the current delivery programme and the Material Properties Datasheet can be found at www.trespa.info. Only the information in the most recent and valid Material Property Datasheet should be used to select and provide advice regarding Trespa products. Trespa reserves the right to change (the specifications for) its products without prior notice.

LIABILITY

Trespa is not liable (neither contractual nor non-contractual) for any damage arising from or

related to the use of this document, except if and to the extent that such damage is the result of wilful misconduct or gross negligence on the part of Trespa and/or its management. The limitation of liability applies to all parties affiliated with Trespa, including but not limited to its officers, directors, employees, affiliated enterprises, suppliers, distributors, agents, and representatives.

GENERAL CONDITIONS

All oral and written statements, offers, quotations, sales, supplies, deliveries and/or agreements and all related activities of Trespa are governed by the Trespa General Terms and Conditions of Sale (*Algemene verkoopvoorwaarden Trespa International B.V.*) filed with the Chamber of Commerce and Industry for Noord- en Midden-Limburg in Venlo (NL) on February 20th, 2015 under number 24270677, which can be found on and downloaded from the Trespa website, www.trespa.com/documentation. All oral and written statements, offers, quotations, sales, supplies, deliveries and/or agreements and all related work of Trespa North America, Ltd. are governed by the Trespa North America General Terms and Conditions of Sale, which can be found on and downloaded from the Trespa website, www.trespa.com/documentation. A copy of these general conditions of sale will be provided free of

charge on request. All general terms and conditions other than the conditions mentioned above are dismissed and do not apply, regardless of whether such terms and conditions are referred to on requests for offers, offer confirmations, stationery and/or other documents of the other party, even if Trespa does not expressly object to such terms and conditions.

INTELLECTUAL PROPERTY

All intellectual property rights and other rights regarding the content of this document (including logos, text and photographs) are owned by Trespa and/or its licensors. Any use of the content of this document, including distribution, reproduction, disclosure, storage in an automated data file or the dispatch of such a file without Trespa's prior written consent is explicitly prohibited. * Trespa, Meteon, Athlon, TopLab, TopLab^{PLUS}, TopLab^{ECO-FIBRE}, TopLab^{VERTICAL}, TopLab^{BASE}, Virtuo, Izeon, Pura NFC, Volkern, Trespa Essentials and Mystic Metallics are registered trademarks of Trespa.

QUESTIONS

Should you have any questions or comments, please do not hesitate to contact Trespa.



VISIT TRESPA.COM FOR THE MOST
UP TO DATE VERSION OF THIS DOCUMENT.

TRESPA®