

Date:
Client:
Project:



**4321**

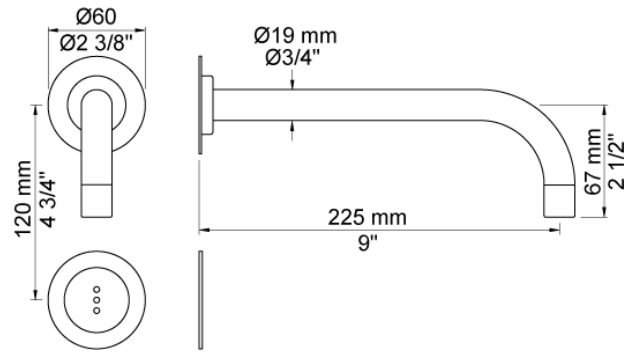
Build-in basin tap with on-off sensor for 'hands free' operation. For vertical mounting. Sensor aligned with wall. Valve box VR2617 included. 4321UP = Valve 4300, sensor cable VR509. 4321AP = 225 mm spout 020, sensor VR510, 60 mm circular flanges 001, VR512.

Ada approved.

**Flow**

	<b>Bar:</b>	<b>1.0</b>	<b>2.0</b>	<b>3.0</b>	<b>4.0</b>	<b>5.0</b>
4321	(l/min)	2.9	4.1	5.0	5.0	5.0
4321 <sup>1)</sup>	(l/min)	2.6	3.7	4.5	4.5	4.5
Areator VR16WS	(l/min)	1.1	1.6	1.9	1.9	1.9
Areator VR161J	(l/min)	2.3	3.3	4.0	4.0	4.0

<sup>1)</sup> USA standard

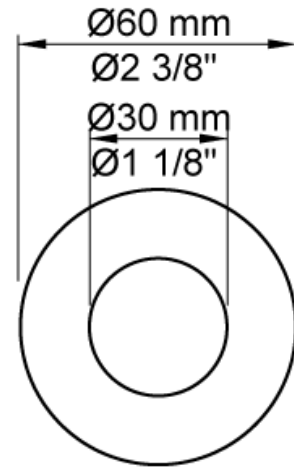


**Available in colors**

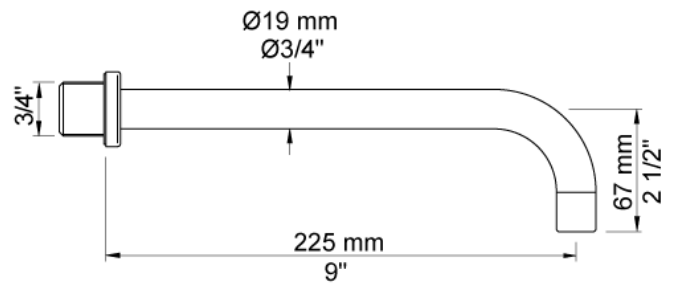
Color 02, Grey	Color 17, Gloss black
Color 04, Light blue	Color 18, White
Color 05, Orange	Color 19, Natural brass
Color 06, Light green	Color 20, Brushed chrome
Color 08, Yellow	Color 21, Carmine red
Color 09, Dark grey	Color 25, Pink
Color 12, Mocca	Color 27, Matt black
Color 14, Bright red	Color 28, Matt white
Color 15, Dark blue	Color 40, Brushed stainless steel
Color 16, Polished chrome	



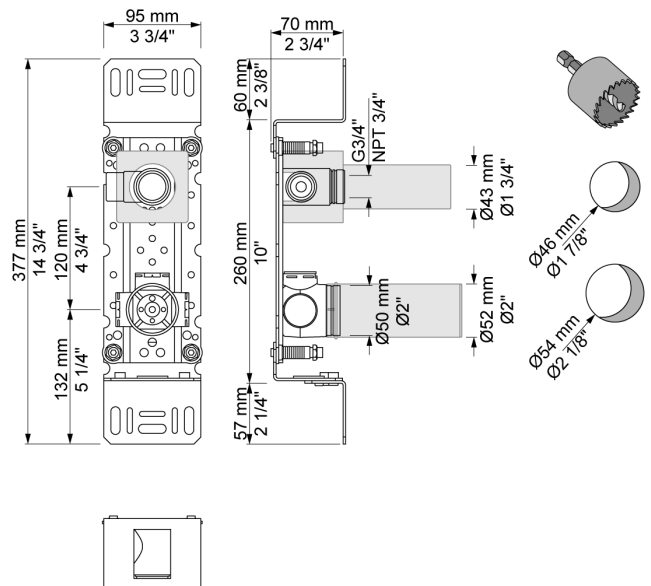
**001**  
60 mm circular flange. Hole Ø30 mm.



**020**  
225 mm fixed spout with water saving aerator.

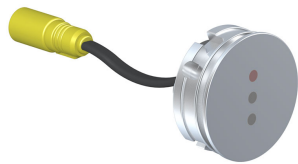
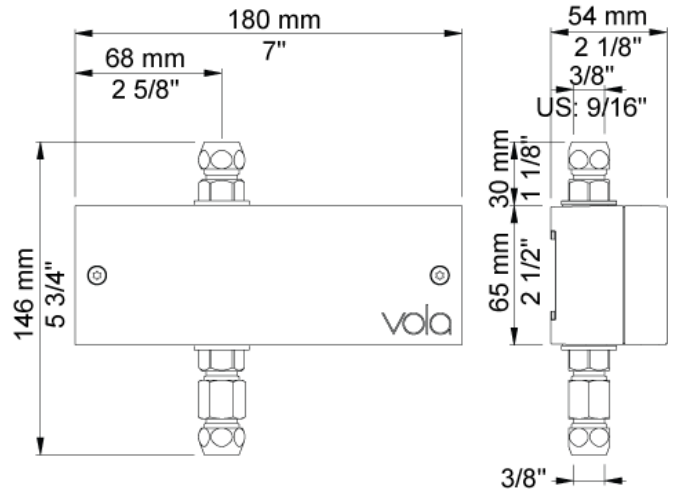


**4300**  
Build-in valve with on-off sensor for 'hands free' operation for vertical installation. Valve box for electronic mixer, VR2617 included.

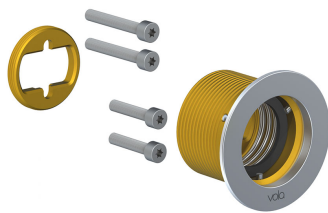
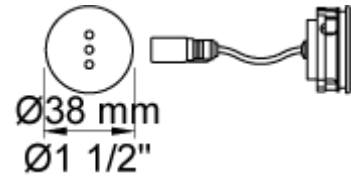




**VR2617**  
Valve box.



**VR510**  
Sensor for electronic tap 4300, 4800 and 4900.



**VR512**  
60 mm circular flange. Hole Ø38 mm for 4300, 4800 and 4900.

