



composite global solutions
integrating insulation intelligence



changing the way the **world** builds



thermomass[®]

TECHNOLOGY

Comprised of rigid insulation and fibre-composite connectors, the THERMOMASS insulation system is designed to provide the highest level of performance for concrete sandwich wall panels. Closed cell rigid insulation used in our systems is manufactured to maintain maximum R-value and optimum m resistance through the elimination of thermal bridges.

The lynchpin of the assembly is the fibre-composite connector. All THERMOMASS connectors are comprised of individual E-glass strands and are bonded with a vinyl ester resin. This pairing creates a material that is exceptionally strong while possessing low thermal conductivity. The fibre-composite connectors have been engineered as the sole support for the two layers of concrete, so the structural integrity of these connectors is of the utmost importance.

As part of our stringent quality control process, THERMOMASS connectors are subject to rigorous third party evaluation. Additionally, traceable quality control processes are implemented at our manufacturing facility through laser etching of serial numbers and product testing.

Architects and engineers that specify a THERMOMASS insulation system know that they are incorporating the most proven material available for sandwich wall panel construction.

APPLICATIONS

- Pre-cast sandwich panels
- Tilt-up sandwich panels
- In-situ sandwich panels



ENERGY EFFICIENCY

Buildings insulated with THERMOMASS systems are designed to maximise the thermal mass effect of concrete, while minimising thermal bridges. These two tenets are key to meeting and exceeding the most stringent model energy codes around the world, and are crucial to creating a building envelope capable of delivering results in any climate. With R-values ranging from R-2 to R-7 for in-situ, tilt-up or precast applications, our clients can be assured of a solution for just about every situation.

INSTALLATION

Installing THERMOMASS concrete insulation is quick and easy. The careful design of the THERMOMASS System makes it the most cost effective option for insulating concrete components. The THERMOMASS System simply brings together form and function to achieve the results required, on time and on budget. The rigid boards can be easily cut to form any panel shape, and predrilled holes make the installation of connectors simple. The THERMOMASS system is the most effective insulation method for precast, tilt-up and in-situ concrete applications.

PERFORMANCE

The thermal performance benefits of the THERMOMASS system are two-fold. The THERMOMASS system combines the excellent thermal resistance of rigid XPS foam with the thermal mass of the thick inner leaf of concrete.

The combination of the two means the mass of the internal layer of concrete is used as a heat sink for the building, passively regulating internal temperature as the ambient temperature rises and falls over the day and night, slashing

For more information visit:
<http://www.compositeglobal.com>



Durasheath®-3

TECHNOLOGY

DURASHEATH-3 (DS-3) combines the high R-Value of PIR rigid foam with a reinforced matte grey, paintable surface. Setting DURASHEATH-3 apart from the competition is its unique inorganic polymer coated matte-glass facer. The matte fibreglass facer makes this the most durable, Section J compliant PIR board on the market and enables the insulation to blend in with concrete surroundings.

With identical thermal performance characteristics as our top selling Thermasheath-3 (TS-3) PIR board, DURASHEATH-3 brings an aesthetic focus to the car park insulation market that has been until now largely overlooked.

APPLICATIONS

- Carparks
- Soffit areas
- Ceiling applications in new construction for commercial, residential, agricultural and industrial buildings.



SUSTAINABILITY

Low embodied energy. Reduces waste or pollution. Reduces heating or cooling load. Reduces energy consumption.

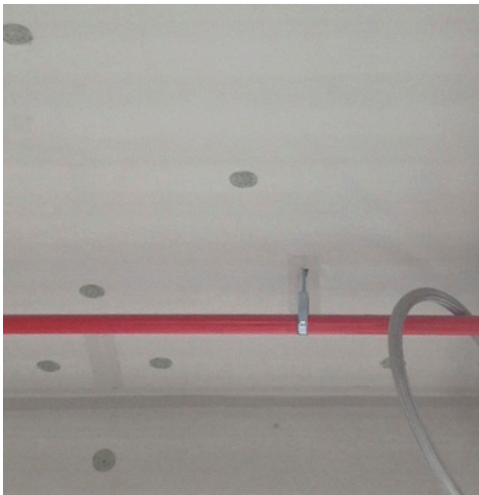
INSTALLATION

DURASHEATH-3 is incredibly easy to install. The lightweight rigid boards are effortlessly cut to size and joints can be taped for aesthetics - though taping is not required for thermal performance. DS3 boards are easily drilled offering excellent access for installation of services. Visit our website and download the DS3 installation manual.

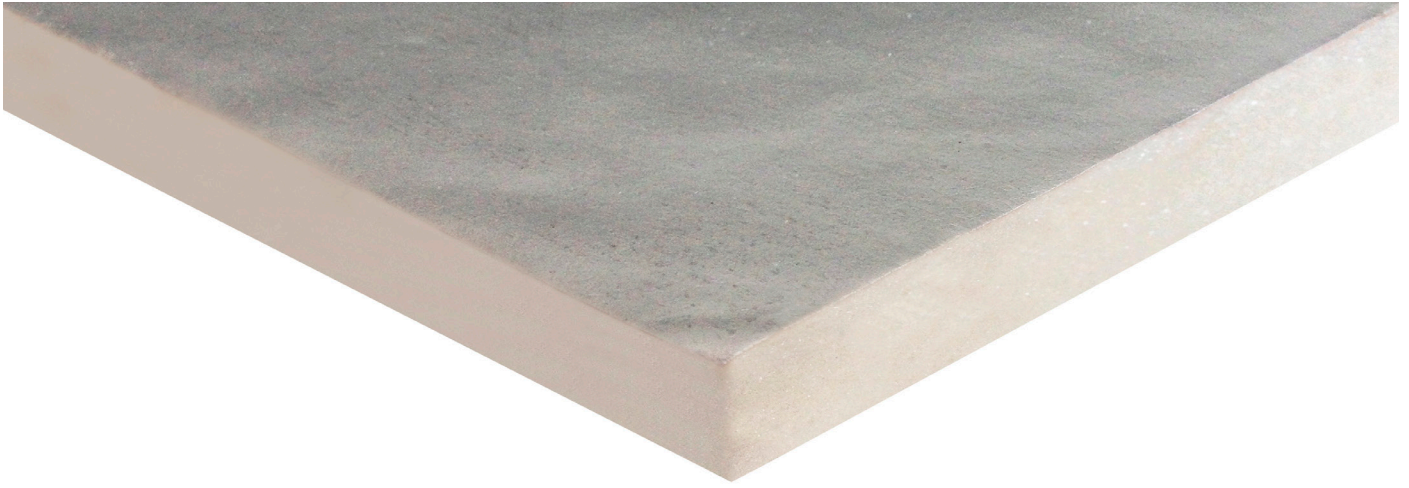


SECTION J COMPLIANCE

DURASHEATH-3 is designed specifically to be used in car park applications where foil-faced PIR and PN boards are typically specified to satisfy BCA Section J requirements.



For more information visit:
<http://www.compositeglobal.com>



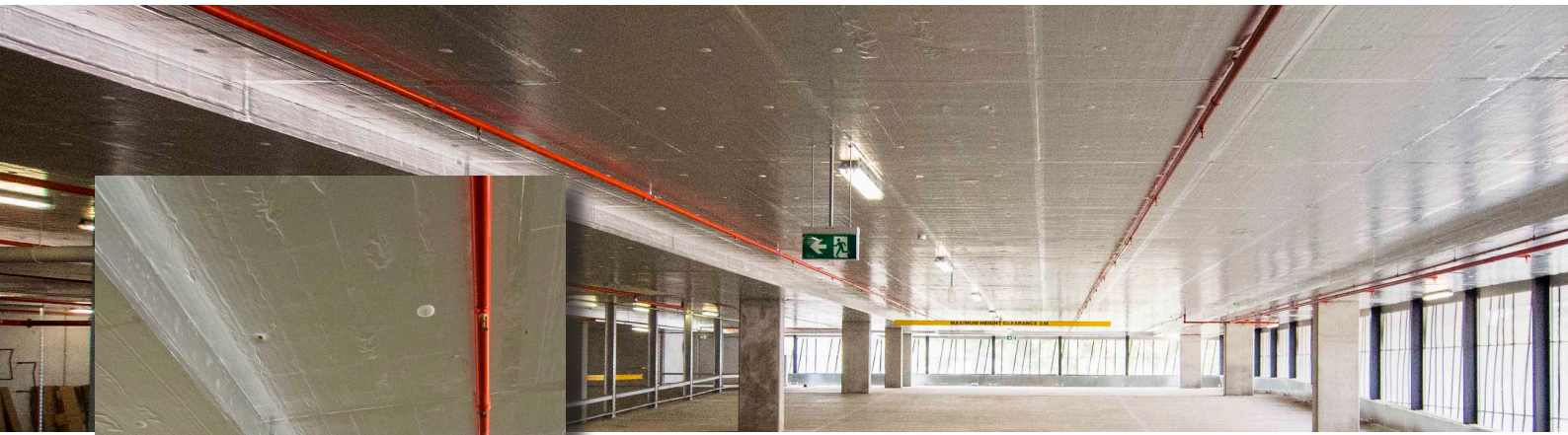
Thermasheath®-3

TECHNOLOGY

THERMASHEATH-3 is an energy-efficient thermal insulation board composed of a rigid closed-cell polyisocyanurate (PIR) foam core bonded to reinforced, reflective foil facers on each side. THERMASHEATH-3 utilises a CFC, HCFC and HFC-free blowing agent that has zero Ozone Depletion Potential (ODP) and negligible Global Warming Potential (GWP).

APPLICATIONS

- Carparks
- Soffit areas
- Ceiling applications in new construction for commercial, residential, agricultural and industrial buildings.



SUSTAINABILITY

Emits low VOCs. Low embodied energy. Reduces waste or pollution. Reduces heating or cooling load. Reduces energy consumption. Reduces heat loss.

INSTALLATION

THERMOSHEATH-3 is incredibly easy to install. The light-weight rigid boards are effortlessly cut to size and joints can be taped for aesthetics - though taping is not required for thermal performance. TS3 boards are easily drilled offering excellent access for installation of services.

SECTION J COMPLIANCE

DURASHEATH-3 is designed specifically to be used in car park applications where foil-faced PIR and PN boards are typically specified to satisfy BCA Section J requirements.



For more information visit:
<http://www.compositeglobal.com>



TECHNOLOGY

Mammoth™ Panels are made from 100% lofted thermally bonded polyester fibres, and is the first polyester insulation on the market to be given an AS ISO 9705 fire rating. Mammoth™ Panels are semi-rigid, allowing the panels to conform to irregularities common in concrete formwork, while still requiring only five fasteners per sheet. Glue fixing is another viable, cost effective installation option.

Mammoth™ Carpark Panels are available in a range of neutral colours and their fibrous construction ensures excellent acoustic properties. Boasting similar R-value to material thickness ratios as conventional PIR insulation, Mammoth™ Carpark Panels are Red List Free (International Living Future Institute) and contain recycled polyester fibres from plastic bottles. Mammoth™ Carpark Panels are non-allergenic and do not cause itching or irritations when handled.

Mammoth™ Carpark Panels are also ideally suited for use as interior acoustic solutions and can be printed with textures or patterns to suit any application.

APPLICATIONS

- Carpark soffit areas.
- Acoustic applications



SUSTAINABILITY

- All Mammoth products are Red List Free - International Living Future Institute
- Mammoth is manufactured in a carbonZero certified organisation
- Mammoth products contain recycled polyester fibres. The recycled fibre used by Mammoth comes from recycled plastic bottles
- Recycling plastic protects the environment by keeping the carbon content locked up in the polyester fibre and reducing landfill waste
- Mammoth products are made in a near zero waste production process and are fully recyclable.

FEATURES

- Strong light reflectance - 0.85 (Resene colour match)
- NRC performance - 0.9; designed for superior absorption
- Customised print design possible
- Sag tested to 95% relative humidity at 35 °C
- Made from 100% polyester fibre without chemical binders or pesticides
- Flexible texture that will bend rather than snap under pressure
- Mammoth has a Group 1S rating, ISO 9705 for New Zealand and Australia
- Effortless installation and easier handling - cuts easily with a sharp knife
- Flexible material which is resistant to chipping, cracking and impact damage
- Mammoth™ polyester products are backed by a 50 year Manufacturer's warranty.

For more information visit:
<http://www.compositeglobal.com>