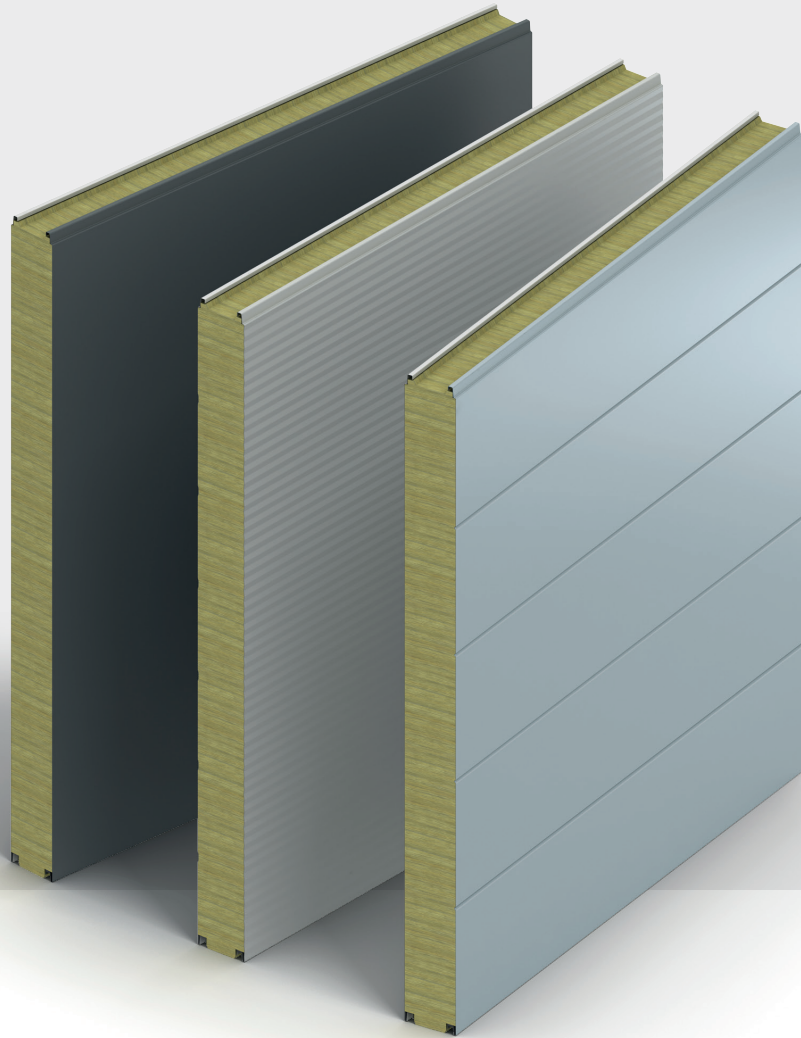


Insulated Panels  
Australia

# Eurobond Europanel Extra Wall Panel Product Data Sheet



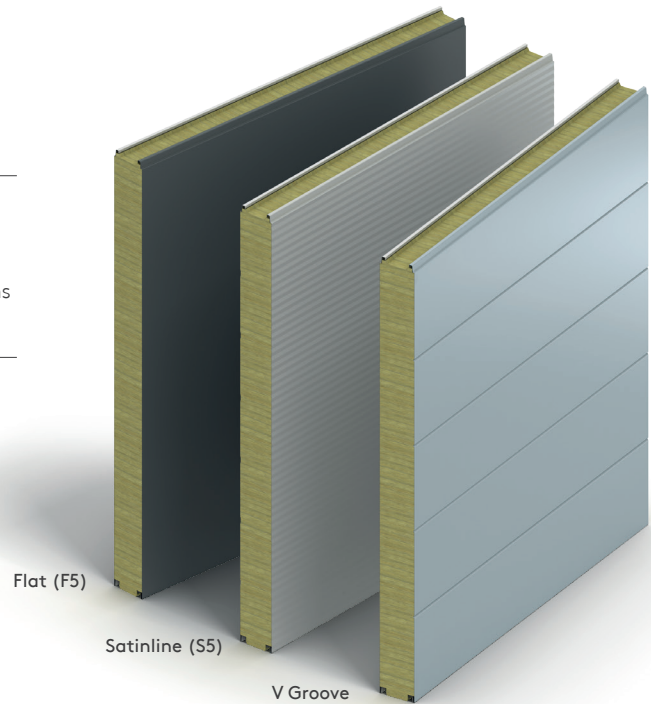
# Product Data

## Product Overview

The Europanel Extra range comprises of stone wool core insulated panels that deliver aesthetically appealing solutions suited to contemporary buildings.

## Application

Eurobond Europanel Extra Wall Panels are secret-fix external wall panels that can be installed both horizontally and vertically.



## Dimensions, Thermal Performance & Weight

Panel Nominal Thickness (mm)	Product R-Value (m <sup>2</sup> K/W) at 23°C	Total R-Value (m <sup>2</sup> K/W)		Weight* (kg/m <sup>2</sup> )
		Heat Flow Out (Winter)	Heat Flow In (Summer)	
75	1.52	1.76	1.61	19.2
100	2.04	2.31	2.11	22.2
125	2.57	2.87	2.62	25.2
150	3.10	3.43	3.13	28.2
175	3.65	4.01	3.65	31.2
200	4.17	4.55	4.14	34.2
240	5.02	5.45	4.95	39.0
300	6.29	6.79	6.17	45.4

Declared Product R-Value is calculated in accordance with AS/NZS 4859.1: 2018 as required for compliance to the National Construction Code.

The R-Values shown above are the total R-Values for the building element as required by the Energy Provisions of the National Construction Code, calculated in accordance with AS/NZS 4859.2: 2018. Eurobond Europanel Extra Wall Panels are manufactured, tested and packaged in conformance with AS/NZS 4859.1: 2018.

\* Actual weight subject to vary ±10% due to manufacturing and raw material tolerances.

## Available Lengths

Standard lengths	1.8m - 11.8m
------------------	--------------

## Cover Width

Standard cover width	1000 mm
----------------------	---------

## Fixing Method

Secret-fix.

## Product Tolerances

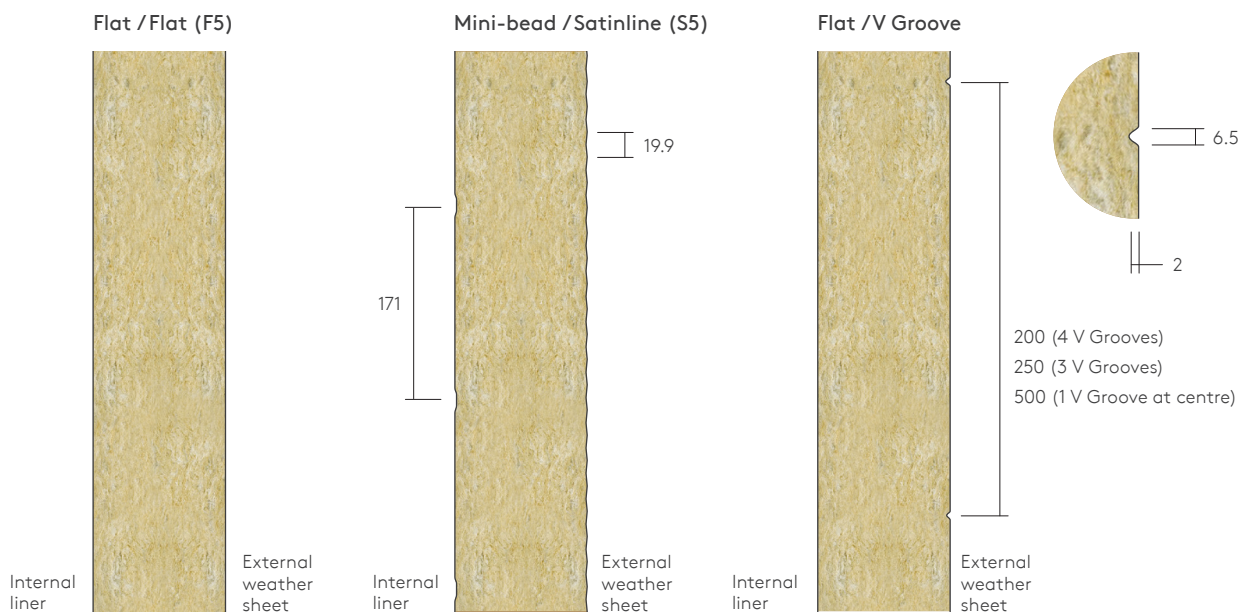
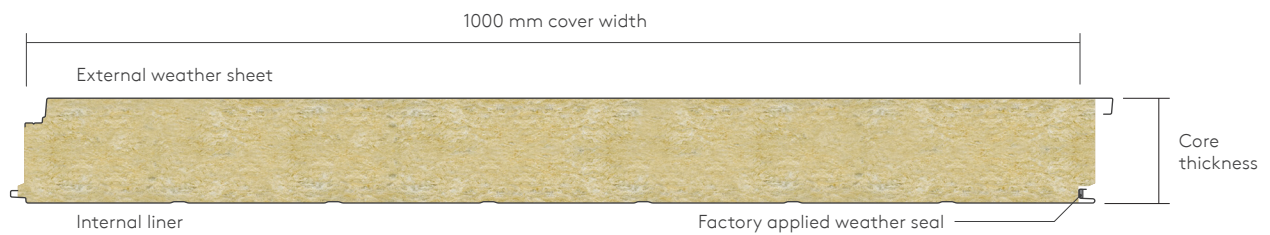
Length	± 10 mm
Cover Width	± 2 mm
Thickness	± 2 mm
Facing Squareness	± 2 mm
Corners (Leg Length)	± 3 mm
Flatness	1.5 mm from the theoretical flat plane over a distance of 700 mm
Joint Gap	± 2 mm

## Profiles

**External Profiles:** Flat (F5), Satinline (S5) and V Groove.

**Internal Profiles:** Flat and Mini-bead.

### Flat (F5) / Mini-bead



**Note:** Dimensions are nominal. Actual dimensions will vary due to manufacturing tolerances. Precise dimensions must always be measured from actual samples. All measurements in mm.

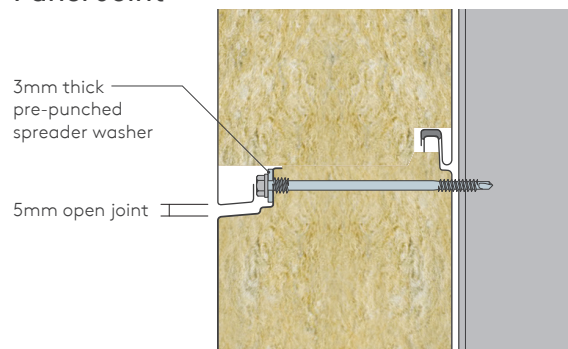
## Insulation Core

Eurobond Europanel Extra Wall Panels are manufactured with a 115 kg/m<sup>3</sup> non-combustible stone wool core which is specifically designed to be used in insulated panels where excellent thermal and fire resistance properties are required.

## Structural Performance

Please contact Technical Services for project specific support on the spanning performance of Eurobond Europanel Extra Wall Panels.

## Panel Joint



# Product Data

## Certification and Testing

### Fire Performance

#### Reaction to Fire

Eurobond Europanel Extra Wall Panels are Deemed to Satisfy (DTS) non-combustible under provision C1.9 (e) (Vii) of the National Construction Code.

Product	Test Method	Result
Eurobond stonewool	AS 1530.1 1994 (2016) - Combustibility test for materials	Not deemed combustible
Eurobond panel skin (uncoated)		Not deemed combustible

Test	Test Method	Result
Ignitability	AS/NZS: 1530.3: 1999	Ignitability Index: 0
Flame Spread		Spread of Flame Index: 0
Heat Release		Heat Evolved Index: 0
Smoke Release		Smoke Developed Index: 2

### Insurer Approvals

Eurobond Europanel Extra Wall Panels are tested to:

- FM 4881 approval standard for Class 1 exterior wall systems, unlimited height for thicknesses 125 mm to 240 mm and panel width of 1100 mm.

FM approvals are subject to the following certified names:

- Europanel F5

Insurer approvals are large scale testing regimes that provide objective third-party testing, which is underpinned by quarterly, half-yearly and yearly factory surveillance audits (depending on the region) to verify compliance. Insurer approvals are subject to panel thickness, width, orientation, method of assembly, steel coating and manufacturing facility. Please contact Technical Services for project specific details.



## Acoustic Performance

Core Thickness (mm)	75	100	125	150	175	200	140	300
SRI (dB)	31	33	33	34	35	36	36	36

For specific acoustic information contact Technical Services.

## Materials

### External Weather Sheet / Internal Liner

- Metallic coated steel in accordance with EN 10326.

## Coatings

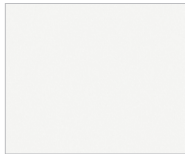
### External Weather Sheet

#### Colorcoat Prisma®

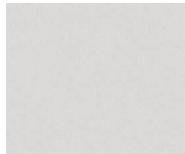
Utilises cutting edge three layer manufacturing technology to create an optimised, robust and chrome free pre-finished steel product. Designed to withstand the rigours of the external environment, versatile, lightweight and strong.

Colorcoat Prisma® pre-finished steel is the ideal choice for your building envelope for exceptional UV performance and long lasting colour. That standard colour range offering is shown below:

#### Solid

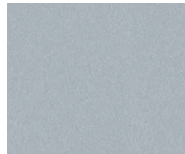


**White**  
RAL 9010

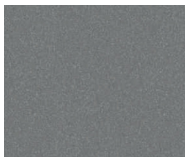


**Oyster**  
RAL 7035

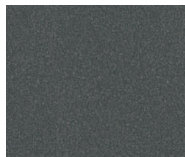
#### Metallic



**Sirius**  
RAL 9006



**Slate Grey**  
RAL 7012



**Anthracite**  
RAL 7016

Special colours available upon request subject to extended lead times and minimum order quantities. Please contact your local Area Sales Manager for further information on colour options.

### Internal Liner

#### Colorcoat® PE25

Colorcoat® PE25 is a smooth 25 micron RAL 9010 polyester coated facing, suitable for applications requiring a straightforward finish.

The pre-finished steel is a product suitable for undemanding wall and ceiling applications particularly in non-aggressive environments such as data centres, offices, schools, hospitals, hotels and residential sectors.

Coating offering available on request:

#### Advantica® L Control

Advantica® L Control is a proven and highly durable pre-finished steel for use in demanding controlled environments such as food processing and packing, clean rooms, hygienic and other amenities. It has a PVC outer layer developed by Tata Steel in conjunction with leading film manufacturers.

- Food safe – meeting stringent requirements for continuous food contact
- Highly resistant to staining
- Excellent corrosion resistance
- Anti-static – reducing the attraction of dust and dirt

#### Colorcoat Prisma®

Utilises cutting edge three layer manufacturing technology to create an optimised, robust and chrome free pre-finished steel product. Designed to withstand the rigours of the external environment, versatile, lightweight and strong.

Colorcoat Prisma® pre-finished steel is the ideal choice for your building envelope for exceptional UV performance and long lasting colour.

\*Please contact Technical Services for further information regarding substrates and coatings. Internal coatings subject to availability and panel cover width.

## Seals

Eurobond Europanel Extra Wall Panels are manufactured with a factory applied weather seal fitted into the rear of the panel joint.

## Quality and Durability

Eurobond Europanel Extra Wall Panels are manufactured from high quality materials using state-of-the-art production equipment to rigorous quality control standards, complying with ISO 9001 standard, ensuring long-term reliability and service life. The panels are also being manufactured under Environmental Management System Certification ISO 14001 and Occupational Health and Safety Certification ISO 45001.

## Packaging

Eurobond Europanel Extra Wall Panels are stacked horizontally. The entire length of the pack of panels is shrink wrapped. The number of panels in each pack depends on panel length, weight, and thickness. Typical pack height is 1200 mm. Additional corner and edge protection for container transport is offered upon request. Please contact Kingspan Customer Service for further information.

## Delivery

All deliveries (unless indicated otherwise) are by flatbed road transport to project site. Off loading is the responsibility of the client.

---

# Contact Details

---

## Australia

**Kingspan Insulated Panels Pty Ltd**  
38-52 Dunheved Circuit | St Marys  
NSW 2760 | Australia

T: +61 (02) 8889 3000

F: +61 (02) 8889 3099

E: [info@kingspanpanels.com.au](mailto:info@kingspanpanels.com.au)  
[kingspanpanels.com.au](http://kingspanpanels.com.au)



Please scan for the most  
up to date version of this  
Product Data Sheet.

For the product offering in other markets please contact your local sales representative or visit [www.kingspanpanels.com](http://www.kingspanpanels.com)

Care has been taken to ensure that the contents of this publication are accurate, but Kingspan Limited and its subsidiary companies do not accept responsibility for errors or for information that is found to be misleading. Suggestions for, or description of, the end use or application of products or methods of working are for information only and Kingspan Limited and its subsidiaries accept no liability in respect thereof.

