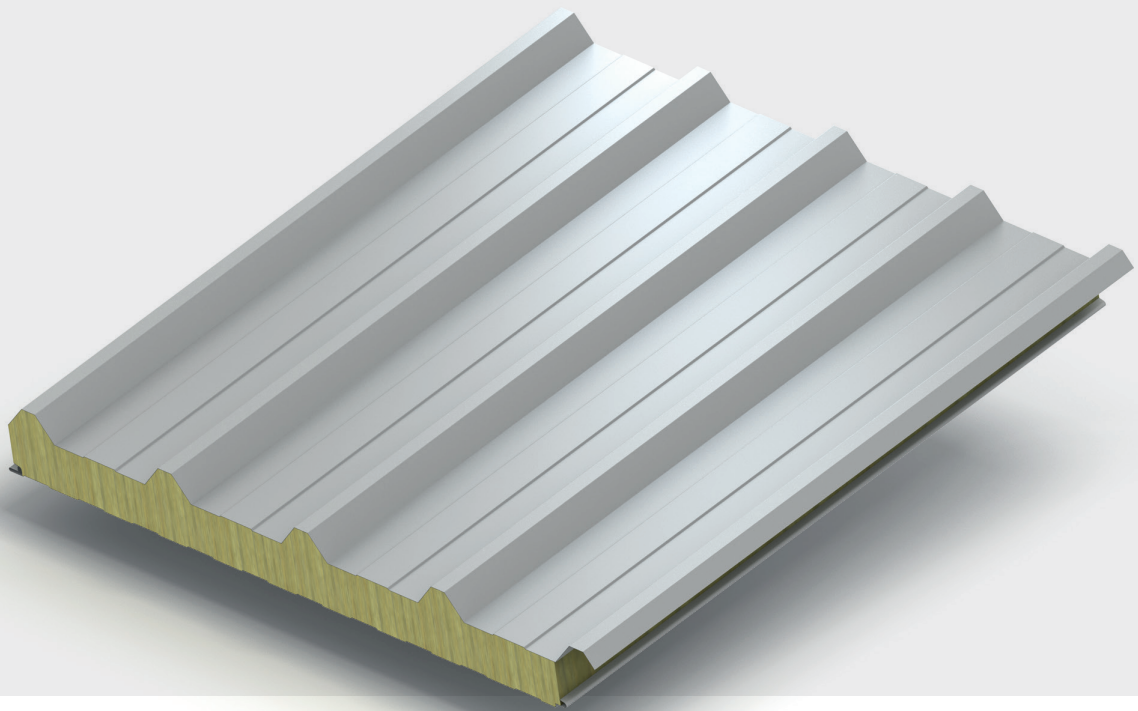


Insulated Panels
Australia

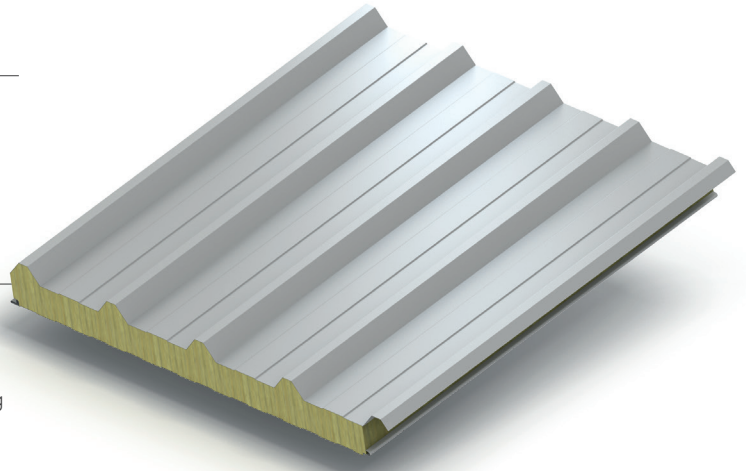
Jl Vulcasteel Roof Panel Product Data Sheet



Product Data

Product Overview

The Jl Vulcasteel Roof Panel is a trapezoidal roofing solution manufactured with a high-density, non-combustible stone wool core. It offers excellent acoustic performance along with energy efficient envelopes.



Application

Jl Vulcasteel Roof Panels are through-fix, trapezoidal profiled, insulated roof panels which can be used for building applications with roof pitches of 5° or more after deflection.

Dimensions, Thermal Performance & Weight

Panel Nominal Thickness (mm)	Overall Thickness (mm)	Product R-Value (m ² K/W) at 23°C	Total R-Value (m ² K/W)		Weight* (kg/m ²)
			Heat Flow Out (Winter)	Heat Flow In (Summer)	
80	117	1.80	2.06	1.90	18.6
100	137	2.22	2.52	2.30	20.6
120	157	2.65	2.97	2.71	22.6
150	187	3.29	3.65	3.31	25.6
175	212	3.82	4.21	3.81	28.0
200	237	4.35	4.77	4.31	30.7

Declared Product R-Value is calculated in accordance with AS/NZS 4859.1: 2018 as required for compliance to the National Construction Code.

The R-Values shown above are the total R-Values for the building element as required by the Energy Provisions of the National Construction Code, calculated in accordance with AS/NZS 4859.2: 2018. Jl Vulcasteel Roof Panels are manufactured, tested and packaged in conformance with AS/NZS 4859.1: 2018.

* Actual weight subject to vary ±10% due to manufacturing and raw material tolerances.

Available Lengths

Standard lengths	2.5m - 11.8m
------------------	--------------

Cover Width

Standard cover width	1000 mm
----------------------	---------

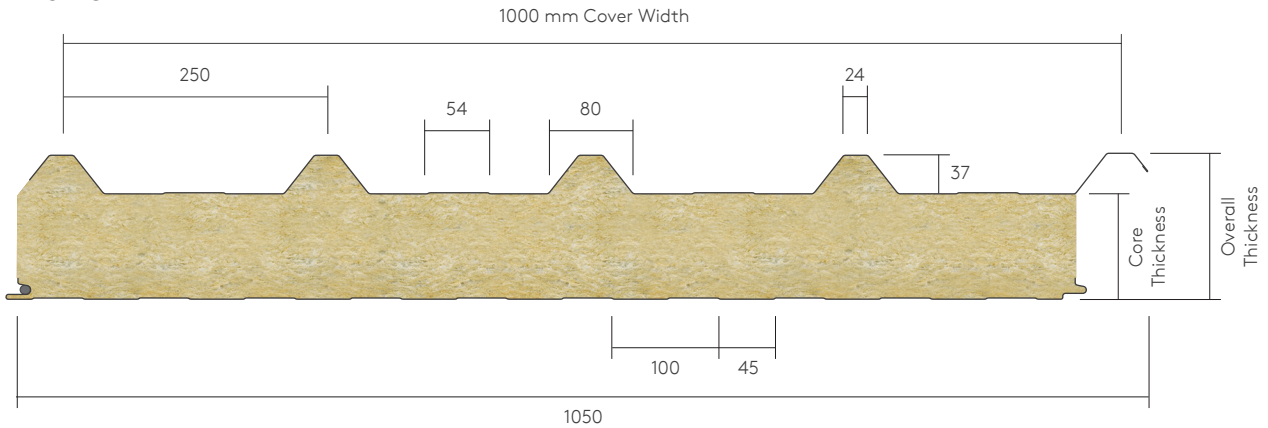
Fixing Method

Through-fix.

Product Tolerances

Length	± 10 mm
Cover Width	± 2 mm
Thickness	± 2 mm
Facing Squareness	± 2 mm
Corners (Leg Length)	± 3 mm
Flatness	1.5 mm from the theoretical flat plane over a distance of 700 mm
Joint Gap	± 2 mm

Profile

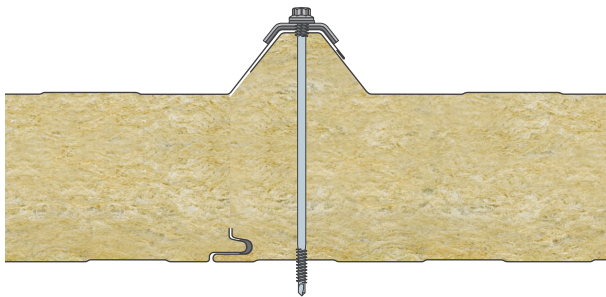


All measurements in mm.

Insulation Core

Jl Vulcasteel Roof Panels are manufactured with a 100kg/m³ non-combustible stone wool core with a tolerance of +10/-5 kg/m³.

Panel Joint



Certification and Testing

Fire Performance

Reaction to Fire

Jl Vulcasteel Roof Panels are Deemed to Satisfy (DTS) non-combustible under provision C1.9 (e) (Vii) of the National Construction Code.

Product	Test Method	Result
Jl Vulcasteel stonewool	AS 1530.1 1994 (2016) - Combustibility test for materials	Not deemed combustible
Jl Vulcasteel panel skin (uncoated)		Not deemed combustible

Test	Test Method	Result
Ignitability	AS/NZS: 1530.3: 1999	Ignitability Index: 0
Flame Spread		Spread of Flame Index: 0
Heat Release		Heat Evolved Index: 0
Smoke Release		Smoke Developed Index: 2

Insurer Approvals

Jl Vulcasteel Roof Panels are tested to:

- FM 4471 approval standard for class 1 roof panels under the certified name Jl Vulcasteel Roof for thicknesses 80mm to 200mm.

Insurer approvals are large scale testing regimes that provide objective third-party testing, which is underpinned by quarterly, half-yearly and yearly factory surveillance audits (depending on the region) to verify compliance. Insurer approvals are subject to panel thickness, width, orientation, method of assembly, steel coating and manufacturing facility. Please contact Technical Services for project specific details.



Product Data

Acoustic Performance

Core Thickness (mm)	80	100	120	150	175	200
SRI (dB)	30	30	31	31	33	31

For specific acoustic information contact Technical Services.

Materials

External Weather Sheet

- Metallic coated steel in accordance with EN 10326.
- Colour: As per Kingspan Ultra standard range.

Internal Liner

- Metallic coated steel in accordance with EN 10326.
- Colour: PE25 (RAL 9010).

Colours and Coatings

External Weather Sheet

Colorflow Ultra

Robust coating system with high levels of UV and corrosion resistance specifically developed for external environments.

Colour Options

Standard colour range offering is shown below:



Special colours are available upon request subject to extended lead times and minimum order quantities. Please contact your local Area Sales Manager for further information on colour options.

Internal Liner

Colorflow Essential

Smooth 25-micron RAL 9010 polyester coated facing, suitable for applications requiring a straightforward finish. The pre-finished steel is a product suitable for standard ceiling applications particularly in non-aggressive environments such as data centres, offices, schools, hospitals, hotels and residential sectors.

Colours are as accurate as possible but are for guidance purposes only. RAL reference numbers represent the nearest colours and are not exact matches to the coatings offered. Please ensure that you request a swatch sample from Kingspan to view accurate colour prior to specification.

Panel End Cut Back

Minimum Cut Back	50mm
End Lap	150mm
Eaves Cut Back	80mm
Maximum Cut Back*	300mm

*Notes: Cut backs only possible in increments of 10mm. For cut backs larger than 150mm, the core material and the steel at the cut back will not be removed and will have to be carried out on site by the installer.

Seals

All panel joints have a factory applied seal fitted on the internal joint of the side-lap to automatically seal the adjacent panels.

Handing

Jl Vulcasteel Roof Panels can be manufactured in both left to right handed (LH) and right to left handed (RH).

Quality and Durability

Jl Vulcasteel Roof Panels are manufactured from the high quality materials using state-of-the-art production equipment to rigorous quality control standards, complying with ISO 9001 standard, ensuring long-term reliability and service life. The panels are also being manufactured under Environmental Management System Certification ISO 14001 and Occupational Health and Safety Certification ISO 45001.

Packaging

Jl Vulcasteel Roof Panels are stacked weather sheet to weather sheet (to minimise pack height). The bottom panel is protected by either cardboard or MDF boards, depending on the type of packaging chosen. All packs are wrapped with spiral wrap stretch polyfilm. The number of panels in a pack will vary depending on panel thickness, steel configuration and length required. Please contact Kingspan Customer Services for further information.

Delivery

All deliveries (unless indicated otherwise) are by flatbed road transport to project site. Offloading is the responsibility of the client.

Accreditations



Contact Details

Australia

Kingspan Insulated Panels Pty Ltd
38-52 Dunheved Circuit | St Marys
NSW 2760 Australia

T: +61 (02) 8889 3000

F: +61 (02) 8889 3099

E: info@kingspanpanels.com.au
kingspanpanels.com.au



Please scan for the most
up to date version of this
Product Data Sheet.

For the product offering in other markets please contact your local sales representative or visit www.kingspanpanels.com

Care has been taken to ensure that the contents of this publication are accurate, but Kingspan Limited and its subsidiary companies do not accept responsibility for errors or for information that is found to be misleading. Suggestions for, or description of, the end use or application of products or methods of working are for information only and Kingspan Limited and its subsidiaries accept no liability in respect thereof.

